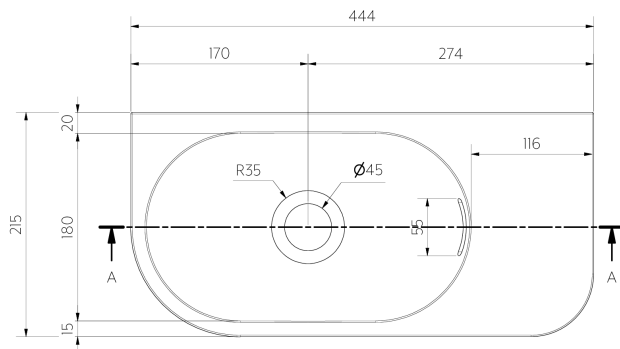
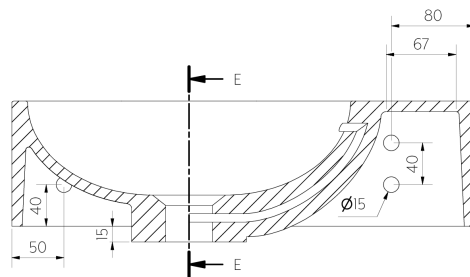


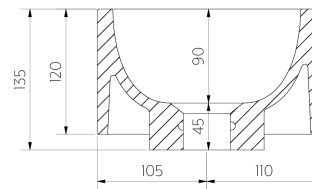
# VESI WALL-MOUNTED BASIN 400MM (OVERFLOW)



Top View



Section A-A



Section E-E

**Note:** Dimensions are nominal measurements only

## SPECIFICATIONS

### RECOMMENDED USE

Domestic/ Commercial

### MATERIAL

Solid Surface

### INSTALLATION

Wall Mount

### OVERFLOW

YES, 9L/min

### RIM THICKNESS

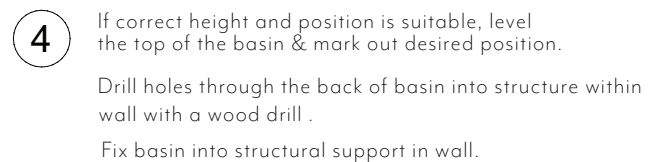
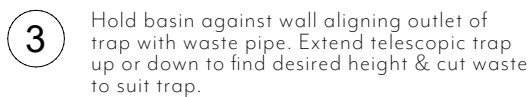
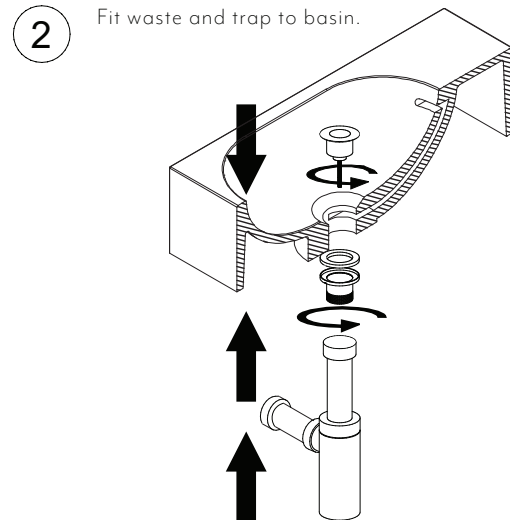
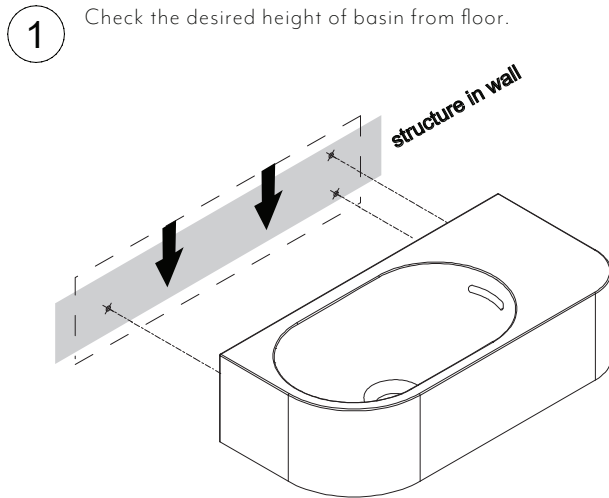
15mm

### CAPACITY

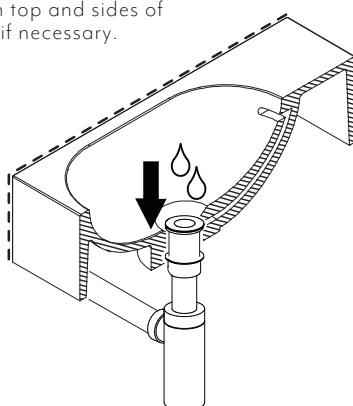
1.8L

# INSTALLATION GUIDE

**Note:** This product must be installed by a licensed plumber. This is a general installation guide - there are many factors involved that can alter the installation method. **AU/NZ:** For installations within Australia and New Zealand, this product must be installed in compliance with AS/NZS 3500. **UK:** For installations in the United Kingdom this product must be installed in compliance with the Water Supply (Water Fittings) Regulations and Water Supply (Water Fittings) (Scotland) Byelaws. **Other:** For installations outside these countries, this product must be installed in compliance with the standards in your respective country.



Silicon top and sides of basin if necessary.



IN THE BOX		3 x Wall plug		1 x Basin
		3 x Hanger bolt		3 x Metal washer
		3 x Plastic washer		3 x Nut



Regularly clean with mild liquid detergent or soap and water.



DO NOT use cream cleaners or bleach. These substances are abrasive.



DO NOT use cleaning pads with abrasive surfaces as this may scratch the material.