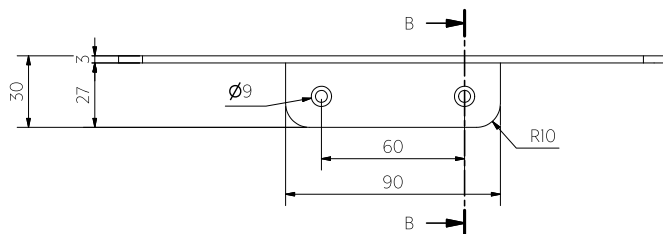
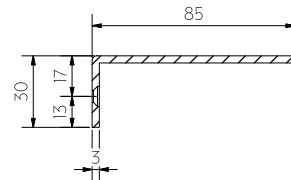


Top View



Front View



Section B-B

Note: Dimensions are nominal measurements only

SPECIFICATIONS

RECOMMENDED USE	Domestic/Commercial
MATERIAL	304 Stainless Steel
MOUNTING HARDWARE INCLUDED	Yes, 2x Phillips Head Masonry Screw/ 2x Wall Plug
FIXING DISTANCE	60mm (centre to centre)

INSTALLATION GUIDE

This product must be installed by a licensed tradesperson.

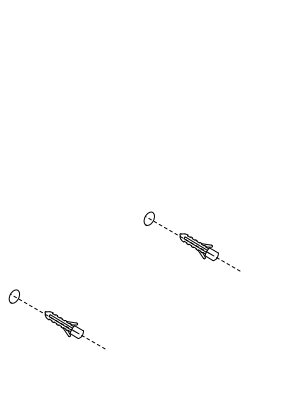
This is a general installation guide - there are many factors that are involved that can alter the installation method. This product install must comply with the standards in your respective country and must be adhered to by your licensed tradesperson.



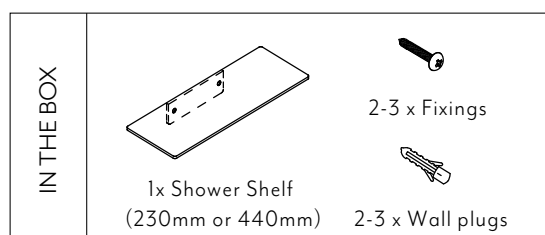
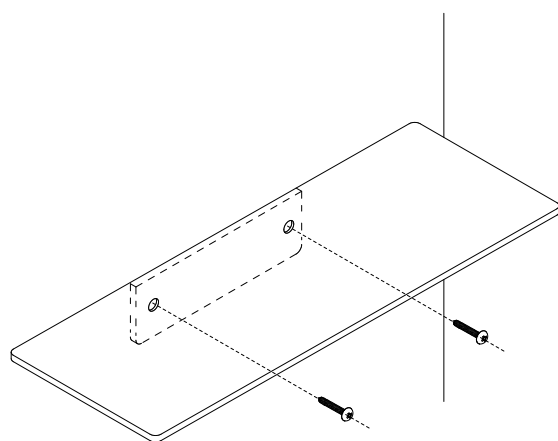
ABI takes no responsibility if your product is not secured to adequate wall structure.

230mm Shelf

- 1 Mark out desired position for shelf.
Drill holes in desired position and insert wall plugs.



- 2 Fix shelf to wall using fixings provided.



Regularly clean with mild liquid detergent or soap and water.



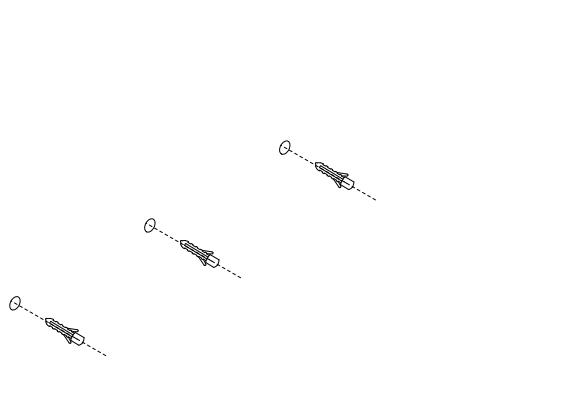
DO NOT use cream cleaners or bleach. These substances are abrasive.



DO NOT use cleaning pads with abrasive surfaces as this may scratch the material.

440mm Shelf

- 1 Mark out desired position for shelf.
Drill holes in desired position and insert wall plugs.



- 2 Fix shelf to wall using fixings provided.

