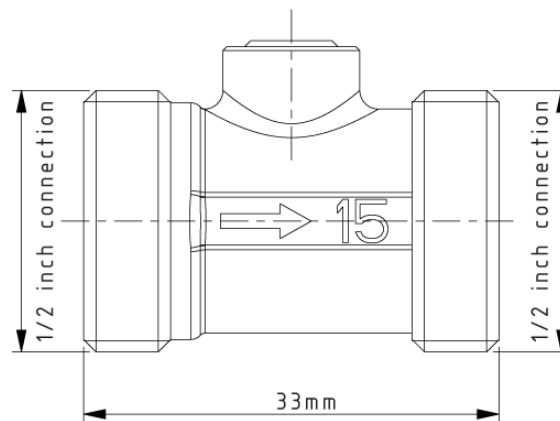
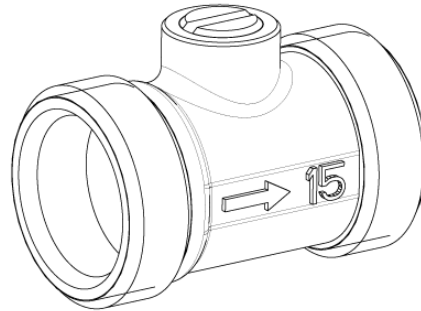


RESTRICTOR - UNEQUAL PRESSURE



Note: Dimensions are nominal measurements only

SPECIFICATIONS

RECOMMENDED USE

Domestic

MATERIAL

Stainless Steel

PRESSURE RATING

Minimum working pressure 3.5bar
Maximum working pressure 10bar
Recommended 150 to 500bar
Recommended installation of a pressure limiting valve if supply pressure exceeds 5bar

TEMPERATURE RATING

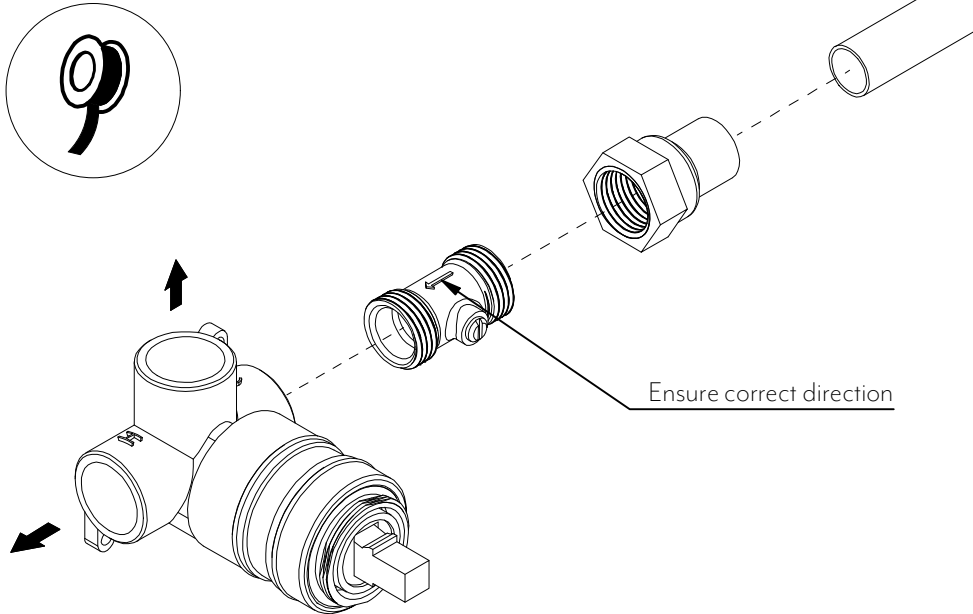
Maximum hot working temperature 75°C
Minimum cold working temperature 5°C

INSTALLATION GUIDE

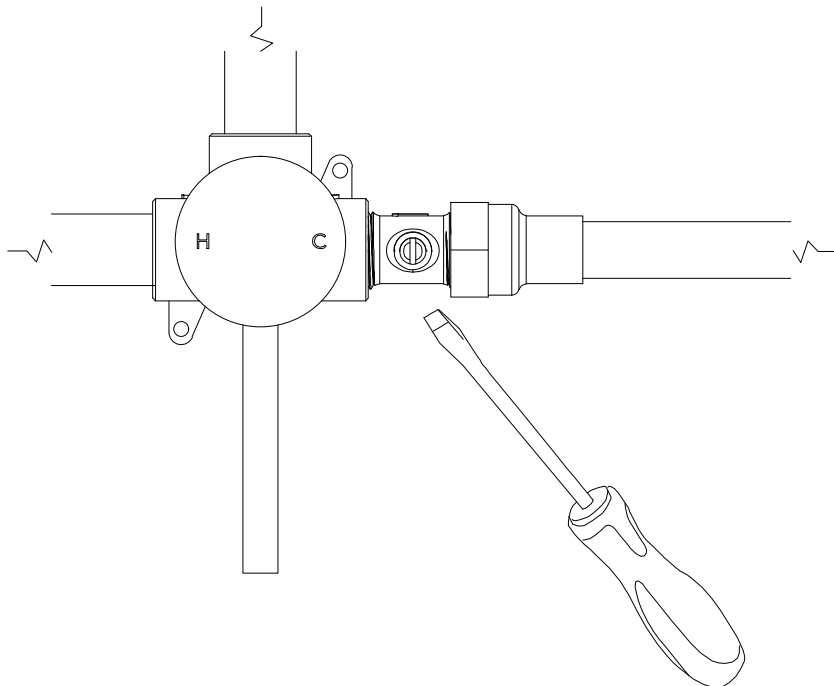
Note: This product must be installed by a licensed plumber. This is a general installation guide - there are many factors involved that can alter the installation method. **AU/NZ:** For installations within Australia and New Zealand, this product must be installed in compliance with AS/NZS 3500. **UK:** For installations in the United Kingdom this product must be installed in compliance with the Water Supply (Water Fittings) Regulations and Water Supply (Water Fittings) (Scotland) Byelaws. **Other:** For installations outside these countries, this product must be installed in compliance with the standards in your respective country.

ABI
INTERIORS

- 1 Install the pressure reducing valve into the inlet of the pressurized line. Please use appropriate thread sealant.



- 2 With the mixer handle adjusted to the middle position, open the handle so it's at maximum pressure. Then adjust the screw until the desired water mix is reached.



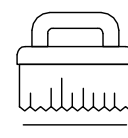
In The Box	
	Restrictor (x1)



Regularly clean with mild liquid detergent or soap and water



DO NOT use cream cleaners or bleach. These substances are abrasive



DO NOT use cleaning pads with abrasive surfaces as this may scratch the material