

Note: Dimensions are nominal measurements only

SPECIFICATIONS

RECOMMENDED USE

Domestic

MATERIAL

Solid Brass

TEMPERATURE RATING

Maximum continuous working temperature 75°C
If the water temperature exceeds 75°C, an approved tempering valve must be fitted

PRESSURE RATING

Recommended minimum working pressure 0.2 Bar
Recommended maximum working pressure 5 Bar
Hot and cold water inlet pressure should be equal

SUITABLE HOT WATER UNITS

Storage tank: Yes
Continuous Flow: Yes
Gravity Feed: Suitable

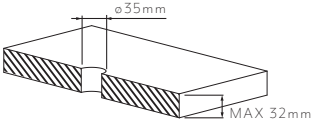
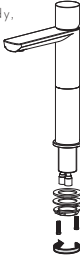
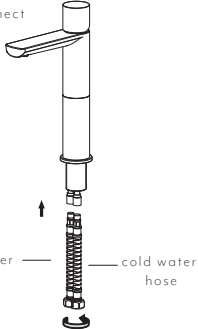
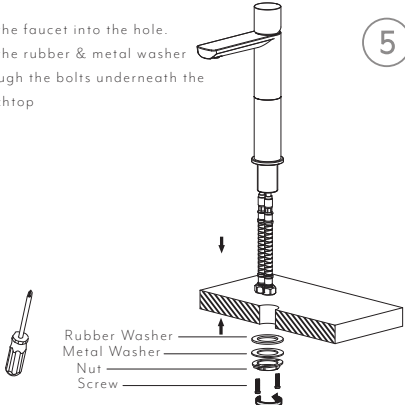
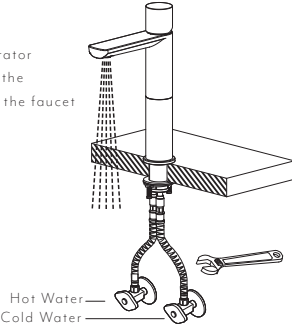
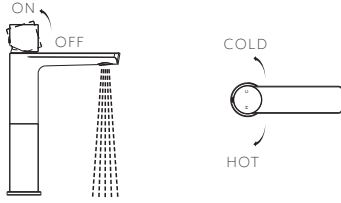
WATER EFFICIENCY

Flow Rate 5L/Min

INSTALLATION GUIDE

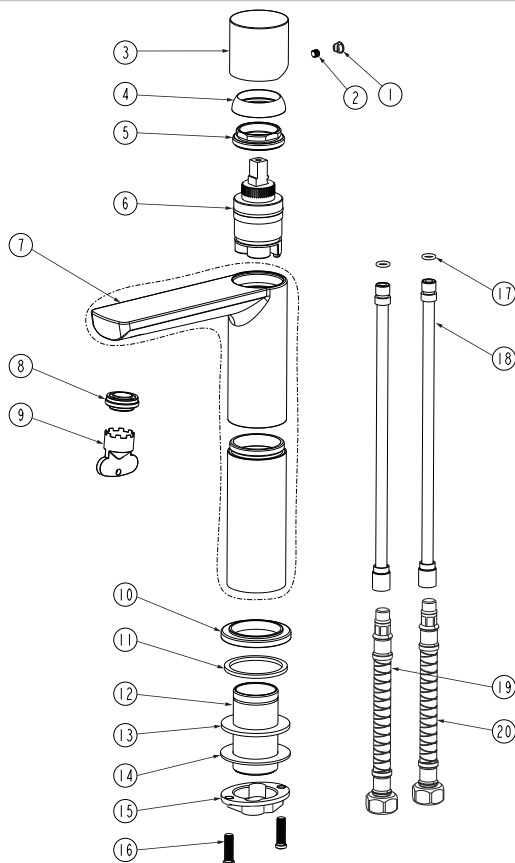
Note: This product must be installed by a licensed plumber. This is a general installation guide - there are many factors involved that can alter the installation method. **AU/NZ:** For installations within Australia and New Zealand, this product must be installed in compliance with AS/NZS 3500. **UK:** For installations in the United Kingdom this product must be installed in compliance with the Water Supply (Water Fittings) Regulations and Water Supply (Water Fittings) (Scotland) Byelaws. **Other:** For installations outside these countries, this product must be installed in compliance with the standards in your respective country.



- 1 The hole dimension should be 35mm

- 2 Fix the bolts to the bottom of the body, tighten it using a screwdriver

- 3 As shown in the figure, connect the flexible hoses

- 4 Put the faucet into the hole. Put the rubber & metal washer through the bolts underneath the benchtop

- 5 Attach the two flexible hoses to water supply. Take the aerator out from the spout and flush the faucet. Install the aerator to the faucet after flushing

- 6 MIXER OPERATION


EXPLODED VIEW

- Item Description Code
- 1 Cap
 - 2 Grub Screw
 - 3 Handle
 - 4 Dome
 - 5 Locking nut
 - 6 Cartridge
 - 7 Body
 - 8-9 Aerator
 - 10 Base Plate
 - 11-16 Connection & Fittings
 - 17 Rubber rings
 - 18 Hose
 - 19-20 Flexi Hose



TOOLS YOU WILL NEED

- plumbers putty
- pliers
- allen key
- adjustable wrench
- phillips screwdriver



Regularly clean with mild liquid detergent or soap and water.



DO NOT use cream cleaners or bleach. These substances are abrasive.



DO NOT use cleaning pads with abrasive surfaces as this may scratch the material.