

**Note:** Dimensions are nominal measurements only

## SPECIFICATIONS

### RECOMMENDED USE

Domestic

### MATERIAL

Solid Brass

### TEMPERATURE RATING

Maximum continuous working temperature 75°C  
If the water temperature exceeds 75°C, an approved tempering valve must be fitted

### PRESSURE RATING

Recommended minimum working pressure 0.2Bar  
Recommended maximum working pressure 5 Bar  
Hot and cold water inlet pressure should be equal

### STANDARDS

Flow Rate(6.0 L/min)

# INSTALLATION GUIDE

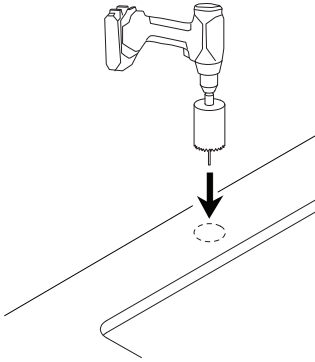
**Note:** This product must be installed by a licensed plumber. This is a general installation guide - there are many factors involved that can alter the installation method. **AU/NZ:** For installations within Australia and New Zealand, this product must be installed in compliance with AS/NZS 3500. **UK:** For installations in the United Kingdom this product must be installed in compliance with the Water Supply (Water Fittings) Regulations and Water Supply (Water Fittings) (Scotland) Byelaws. **Other:** For installations outside these countries, this product must be installed in compliance with the standards in your respective country.



- 1 Mark out desired location of spout.

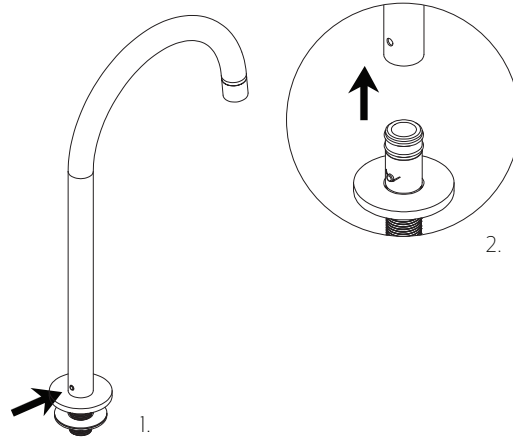
Cut hole using a 25mm hole saw.

**Note:** If cutting a stone benchtop it will need to be cut in a controlled environment by a licensed tradesperson as per OH&S regulations.

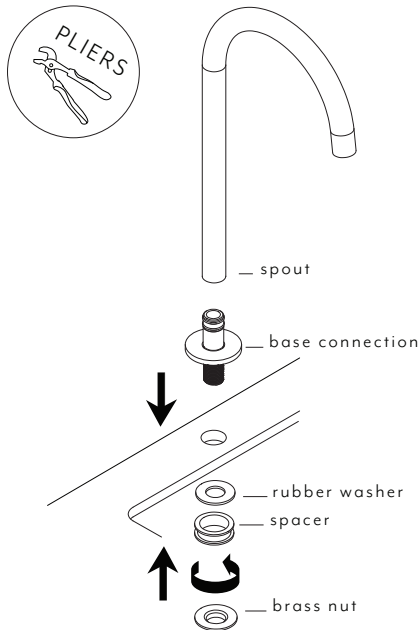


- 2 Remove the spout by pushing in the plastic clip with an allen key or screwdriver.

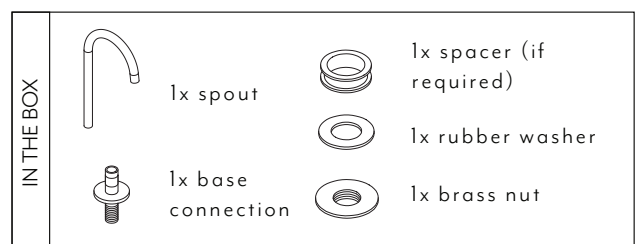
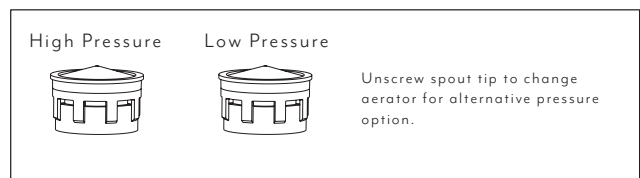
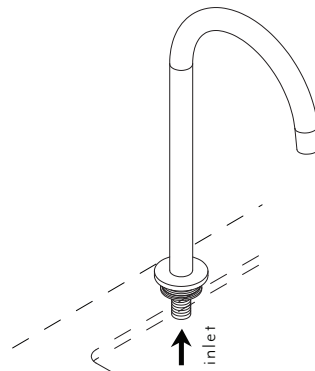
**Caution: Be careful not to scratch the spout!**



- 3 Fix base connection to benchtop with brass nut ensuring the rubber washer and spacer is fitted to the underside of the benchtop. Use pliers to hold the base connection while nut is tightened.



- 4 Connect pipework to inlet of spout.



Regularly clean with mild liquid detergent or soap and water



**DO NOT** use cream cleaners or bleach. These substances are abrasive



**DO NOT** use cleaning pads with abrasive surfaces as this may scratch the material