

**Note:** Dimensions are nominal measurements only

## SPECIFICATIONS

### RECOMMENDED USE

Domestic/ Commercial

### MATERIAL

304 Stainless Steel

### TEMPERATURE RATING

Ambient or chilled water only

### PRESSURE RATING

Recommended minimum working pressure 1.5 Bar  
Recommended maximum working pressure 5 Bar  
Please note that filtration systems will reduce the pressure

### INSTALLATION

Top mount or Undermount

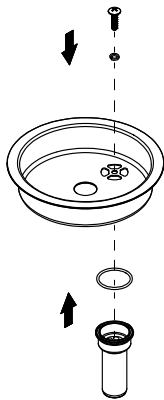
# INSTALLATION GUIDE

**Note:** This product must be installed by a licensed plumber. This is a general installation guide - there are many factors involved that can alter the installation method. **AU/NZ:** For installations within Australia and New Zealand, this product must be installed in compliance with AS/NZS 3500. **UK:** For installations in the United Kingdom this product must be installed in compliance with the Water Supply (Water Fittings) Regulations and Water Supply (Water Fittings) (Scotland) Byelaws. **Other:** For installations outside these countries, this product must be installed in compliance with the standards in your respective country.

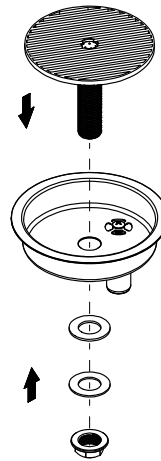


## INSTALLATION - CUP CLEANER - TOP MOUNT

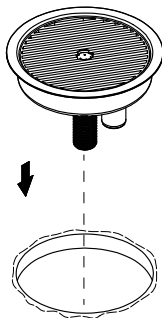
- 1 Assemble the waste outlet as shown below.



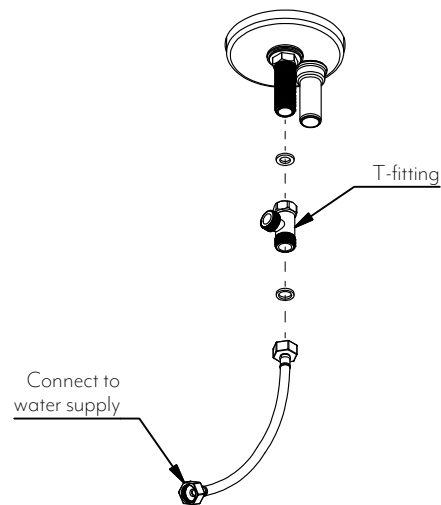
- 2 Assemble the sprayer as shown below.



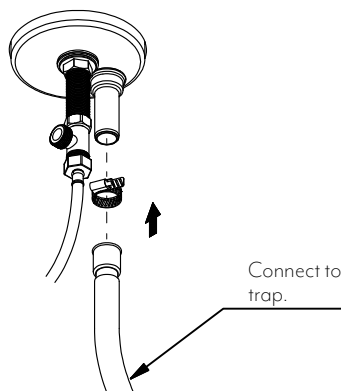
- 3 Apply silicone around the perimeter of the pre-cut hole. Insert the bowl and push down gently.



- 4 Connect your water supply. Use the supplied t-fitting if necessary.



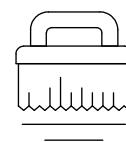
- 5 Connect the waste outlet to the nipple on your trap or another waste outlet point. Test and commission.



Regularly clean with mild liquid detergent or soap and water



DO NOT use cream cleaners or bleach. These substances are abrasive



DO NOT use cleaning pads with abrasive surfaces as this may scratch the material

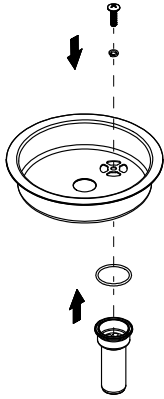
# INSTALLATION GUIDE

**Note:** This product must be installed by a licensed plumber. This is a general installation guide - there are many factors involved that can alter the installation method. **AU/NZ:** For installations within Australia and New Zealand, this product must be installed in compliance with AS/NZS 3500. **UK:** For installations in the United Kingdom this product must be installed in compliance with the Water Supply (Water Fittings) Regulations and Water Supply (Water Fittings) (Scotland) Byelaws. **Other:** For installations outside these countries, this product must be installed in compliance with the standards in your respective country.



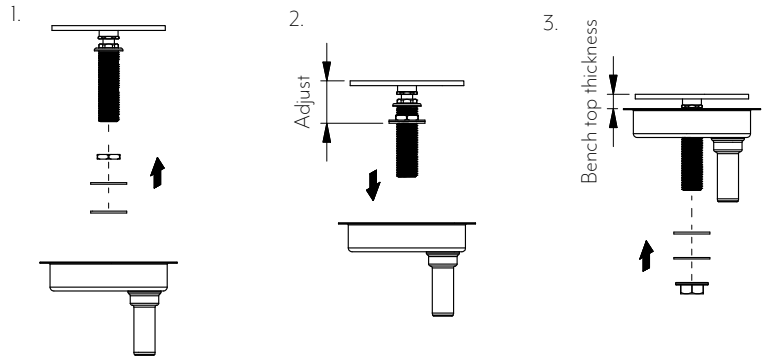
## INSTALLATION - CUP CLEANER - UNDERMOUNT

- ① Assemble the waste outlet as shown below.

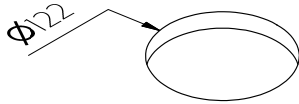


- ② Measure the thickness of your bench top.

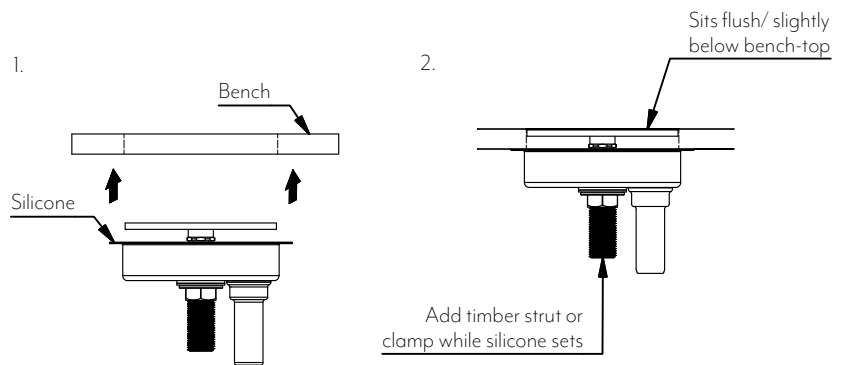
1. Attach the supplied nut, steel washer and rubber washer
2. Insert into the bowl as shown
3. Measure the offset and adjust to suit your bench thickness



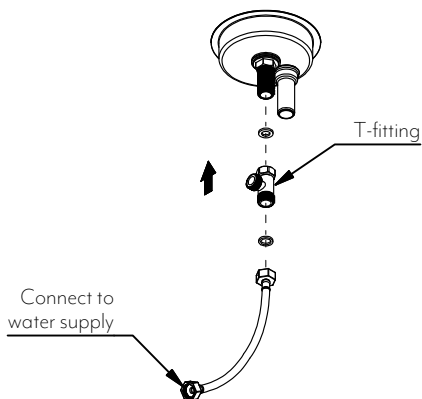
- ③ Ensure the pre-cut hole is 122mm in diameter.



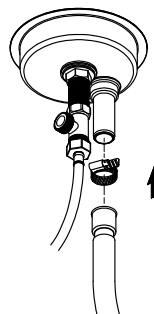
- ④
1. Apply silicone to the top edge of the front drain and push to the underside of your bench
  2. Secure in place whilst it sets.



- ⑤ Connect your water supply. Use the supplied t-fitting if necessary.



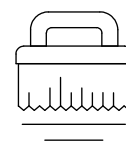
- ⑥ Connect the waste outlet to the nipple on your trap or another waste outlet point. Test and commission.



Regularly clean with mild liquid detergent or soap and water



DO NOT use cream cleaners or bleach. These substances are abrasive



DO NOT use cleaning pads with abrasive surfaces as this may scratch the material

# INSTALLATION GUIDE

**Note:** This product must be installed by a licensed plumber. This is a general installation guide - there are many factors involved that can alter the installation method. **AU/NZ:** For installations within Australia and New Zealand, this product must be installed in compliance with AS/NZS 3500. **UK:** For installations in the United Kingdom this product must be installed in compliance with the Water Supply (Water Fittings) Regulations and Water Supply (Water Fittings) (Scotland) Byelaws. **Other:** For installations outside these countries, this product must be installed in compliance with the standards in your respective country.

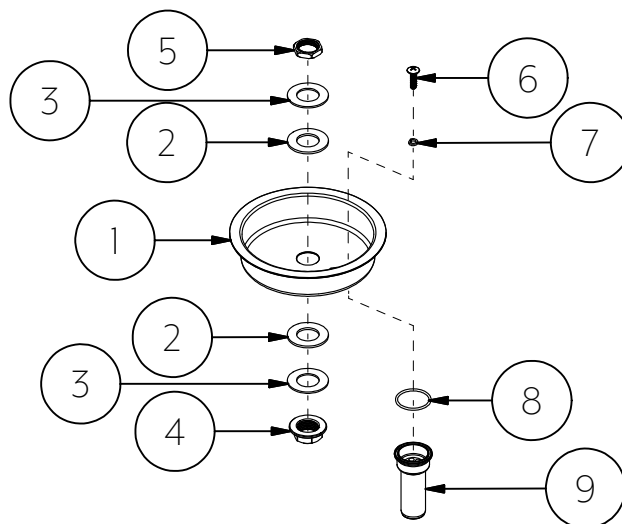
ABI  
INTERIORS

## In The Box

### Universal drain

1. Bowl
2. Rubber washer
3. Metal washer
4. BSP 1/2 Flat nut
5. BSP 1/2 Nut
6. M4 Bolt
7. Spring washer
8. O-ring
9. Waste receptacle
10. Font grate

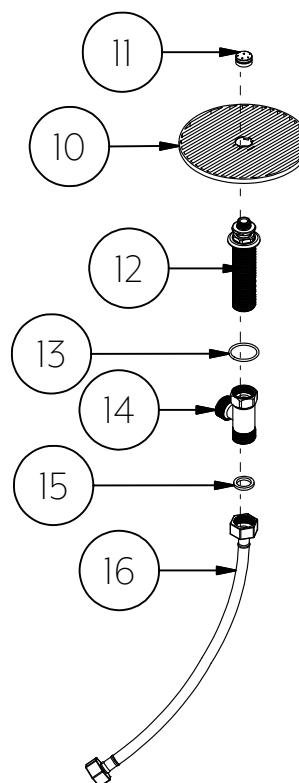
Universal drain



### Cup cleaner insert

11. Sprayer nozzle
12. Sprayer body
13. O-ring
14. BSP 1/2 tee
15. Flat washer
16. Flexi hose

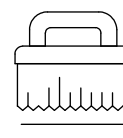
Cup cleaner insert



Regularly clean with mild liquid detergent or soap and water



DO NOT use cream cleaners or bleach. These substances are abrasive



DO NOT use cleaning pads with abrasive surfaces as this may scratch the material