

Note: Dimensions are nominal measurements only

SPECIFICATIONS

RECOMMENDED USE

Domestic/ Commercial

MATERIAL

304 Stainless Steel

TEMPERATURE RATING

Maximum continuous working temperature 75°C
If the water temperature exceeds 75°C, an approved tempering valve must be fitted

PRESSURE RATING

Recommended minimum working pressure 0.5Bar
Recommended maximum working pressure 5Bar
Hot and cold water inlet pressure should be equal

SUITABLE HOT WATER UNITS

Storage tank: Yes
Continuous Flow: Yes
Gravity Feed: Suitable

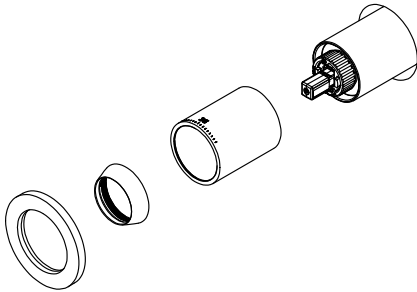
INSTALLATION GUIDE

Note: This product must be installed by a licensed plumber. This is a general installation guide - there are many factors involved that can alter the installation method. **AU/NZ:** For installations within Australia and New Zealand, this product must be installed in compliance with AS/NZS 3500. **UK:** For installations in the United Kingdom this product must be installed in compliance with the Water Supply (Water Fittings) Regulations and Water Supply (Water Fittings) (Scotland) Byelaws. **Other:** For installations outside these countries, this product must be installed in compliance with the standards in your respective country.

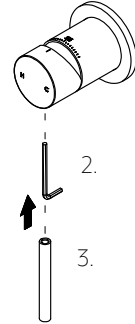
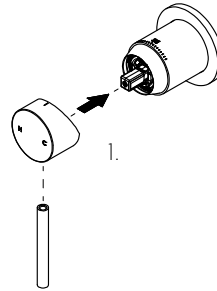


INSTALLATION - HANDLE KIT

- ① Push on the sleeve and backplate. Screw the dome on.



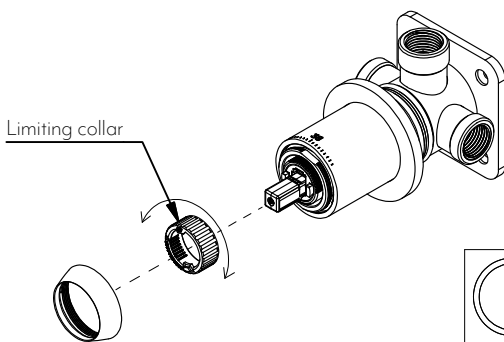
- ② 1. Push the handle onto the cartridge.
2. Fasten the grub screw underneath.
3. Screw on the handle stick.



ADJUSTING THE LIMITING COLLAR

The limiting collar must be set so that the maximum temperature coming out of your shower head is no more than **43 degrees Celsius**. Please use a temperature gauge.

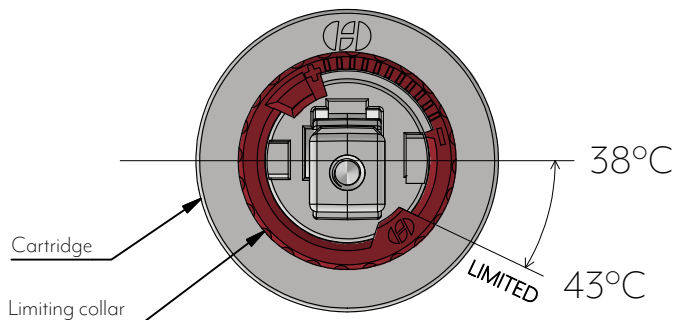
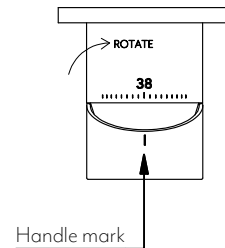
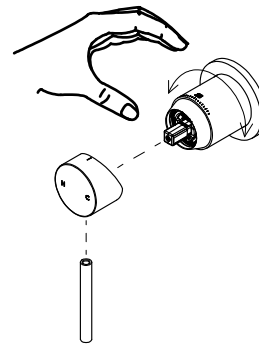
1. Unscrew the dome and remove the limiting sleeve with needle nose pliers.
2. Put the handle on and run the water, use the temperature gauge to check the water temperature at the shower head. Once it's at 43 degrees Celsius, leave it in position and remove the handle again.
2. Re-install the sleeve and position the limiting sleeve so that rotation is limited to the current position of the cartridge (43 degrees Celsius).



SET 38 DEGREES CELSIUS

Depending on your inlet water temperatures, you may need to rotate the sleeve so the display temperature of 38 degrees Celsius is aligned to the handle mark.

Do this while the handle is rotated to the correct angle that the outlet water from the shower head is 38 degrees Celsius.



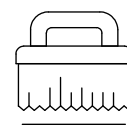
In The Box
on next page



Regularly clean with mild liquid detergent or soap and water



DO NOT use cream cleaners or bleach. These substances are abrasive



DO NOT use cleaning pads with abrasive surfaces as this may scratch the material

INSTALLATION GUIDE

Note: This product must be installed by a licensed plumber. This is a general installation guide - there are many factors involved that can alter the installation method. **AU/NZ:** For installations within Australia and New Zealand, this product must be installed in compliance with AS/NZS 3500. **UK:** For installations in the United Kingdom this product must be installed in compliance with the Water Supply (Water Fittings) Regulations and Water Supply (Water Fittings) (Scotland) Byelaws. **Other:** For installations outside these countries, this product must be installed in compliance with the standards in your respective country.



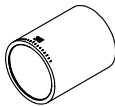
In The Box



1 x Handle body



1 x Dome



1 x Sleeve



1 x Handle stick



1 x Grub screw



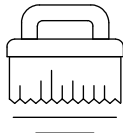
1 x Allen key 3mm



Regularly clean with mild liquid detergent or soap and water



DO NOT use cream cleaners or bleach. These substances are abrasive



DO NOT use cleaning pads with abrasive surfaces as this may scratch the material