

INSTALLATION GUIDE

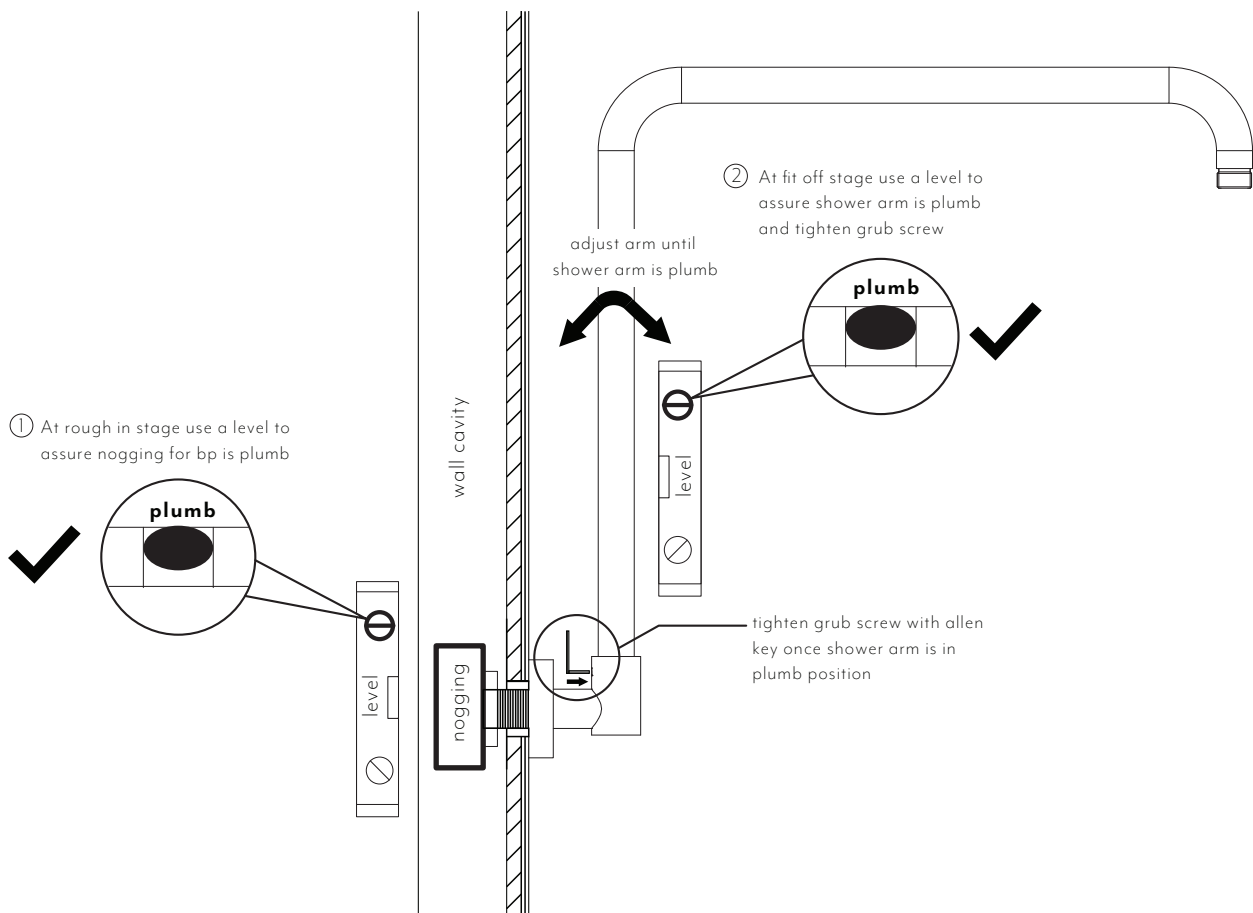
This product must be installed by a licensed tradesperson.

This is a general installation guide - there are many factors that are involved that can alter the installation method. This product install must comply with the standards in your respective country and must be adhered to by your licensed tradesperson.



- 1) Check that the male brass thread installed in the wall is the correct length. Cut to length if required ensuring end face is square. Apply thread tape to the thread.
- 2) Slide the cover plate onto the arm. Carefully screw the arm onto the brass thread until the threaded end is adjacent to the wall/tile or ceiling face and the outlet is facing down. Do not tighten and be careful not to damage the decorative finish. Push the cover plate until it meets the wall/ceiling face.
- 3) Refer to individual product guide for installation of shower head.

Note: To ensure the shower head is plumb please see the following instructions below;



Regularly clean with mild liquid detergent or soap and water.



DO NOT use cream cleaners or bleach. These substances are abrasive.



DO NOT use cleaning pads with abrasive surfaces as this may scratch the material.