

**Note:** Dimensions are nominal measurements only

### SPECIFICATIONS

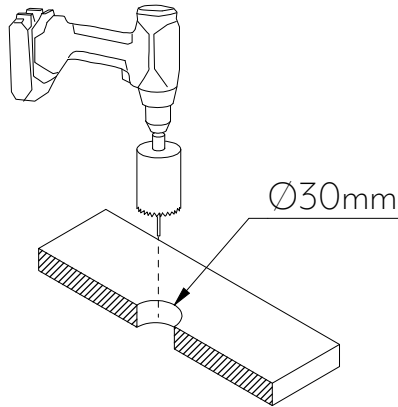
RECOMMENDED USE	Domestic
MATERIAL	Solid Brass
TEMPERATURE RATING	Maximum continuous working temperature 75°C If the water temperature exceeds 75°C,an approved tempering valve must be fitted
PRESSURE RATING	Recommended minimum working pressure 0.2 Bar Recommended maximum working pressure 5 Bar Hot and cold water inlet pressure should be equal
SUITABLE HOT WATER UNITS	Storage tank: Yes Continuous Flow: Yes Gravity Feed: Suitable

# INSTALLATION GUIDE

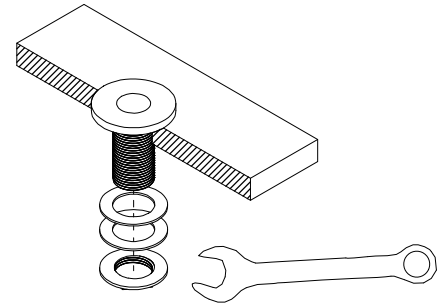
**Note:** This product must be installed by a licensed plumber. This is a general installation guide - there are many factors involved that can alter the installation method. **AU/NZ:** For installations within Australia and New Zealand, this product must be installed in compliance with AS/NZS 3500. **UK:** For installations in the United Kingdom this product must be installed in compliance with the Water Supply (Water Fittings) Regulations and Water Supply (Water Fittings) (Scotland) Byelaws. **Other:** For installations outside these countries, this product must be installed in compliance with the standards in your respective country.

ABI  
INTERIORS

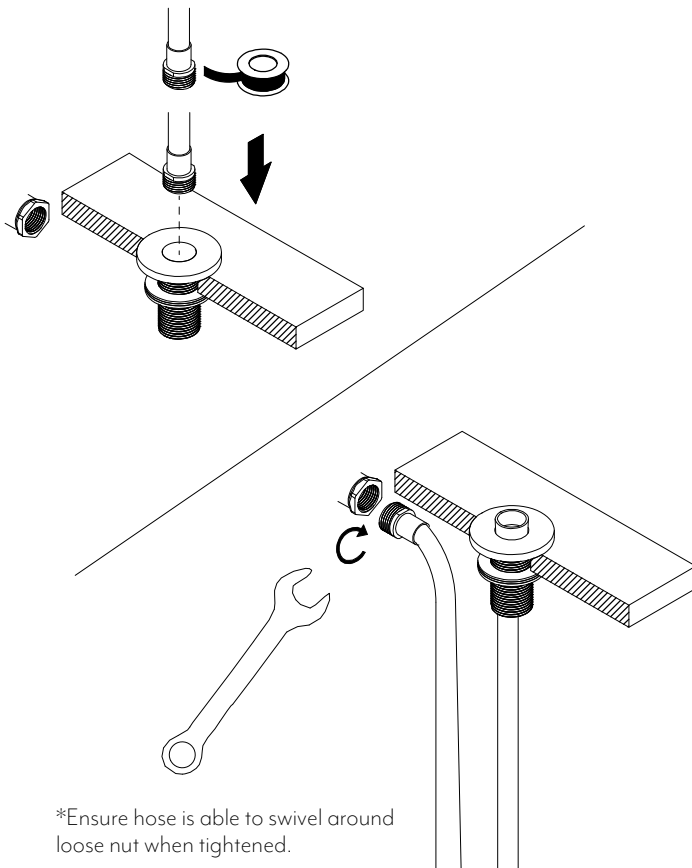
- 1 Mark hole in bench at desired location and drill Ø30mm hole.



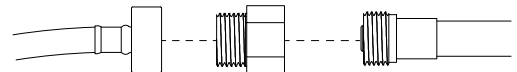
- 2 Install base plate into cutout. Ensure rubber washer is followed by metal washer and tightened securely with the locking nut.



- 3 Apply thread tape to hose end and feed through base plate from above. Install into mixed water outlet of your chosen setup.



- 4 Install your chosen hand shower to the hose. \*Test and commission



\*If hose reach needs to be extended. A male to female G 1/2 connector is provided for connection to a flexible hose.

## What's in the box

Hand shower base plate x 1

Locking nut x 1

Metal washer x 1

Rubber Washer x 1

G1/2 female to male x 1

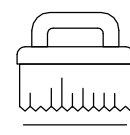
Shower hose x 1



Regularly clean with mild liquid detergent or soap and water



DO NOT use cream cleaners or bleach. These substances are abrasive



DO NOT use cleaning pads with abrasive surfaces as this may scratch the material