

**Note:** Dimensions are nominal measurements only

## SPECIFICATIONS

### RECOMMENDED USE

Domestic

### MATERIAL

304 Stainless Steel

### MOUNTING HARDWARE INCLUDED

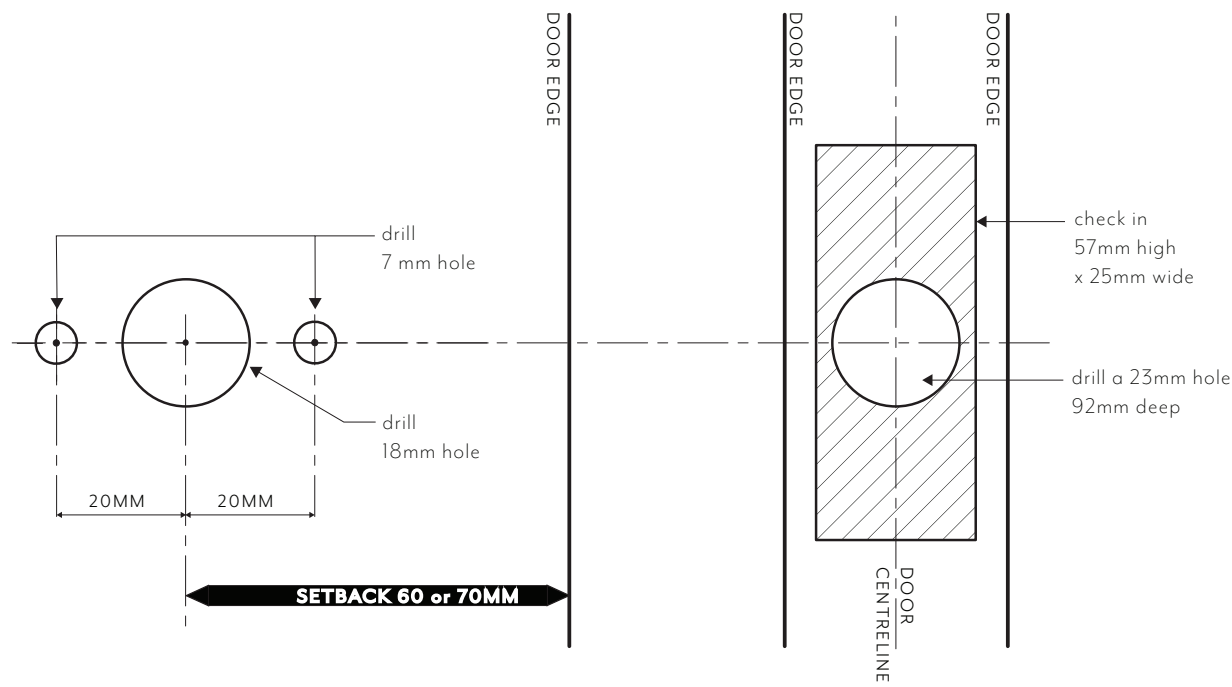
Yes, 8 x Mounting Screws

### MOUNTS FROM

Front

# DOOR CUTTING GUIDE

This product must be installed by a licensed tradesperson.  
This is a general installation guide - there are many factors that are involved that can alter the installation method. This product install must comply with the standards in your respective country and must be adhered to by your licensed tradesperson.



Regularly clean with mild liquid detergent or soap and water.



DO NOT use cream cleaners or bleach. These substances are abrasive.



DO NOT use cleaning pads with abrasive surfaces as this may scratch the material.

# INSTALLATION GUIDE

This product must be installed by a licensed tradesperson.

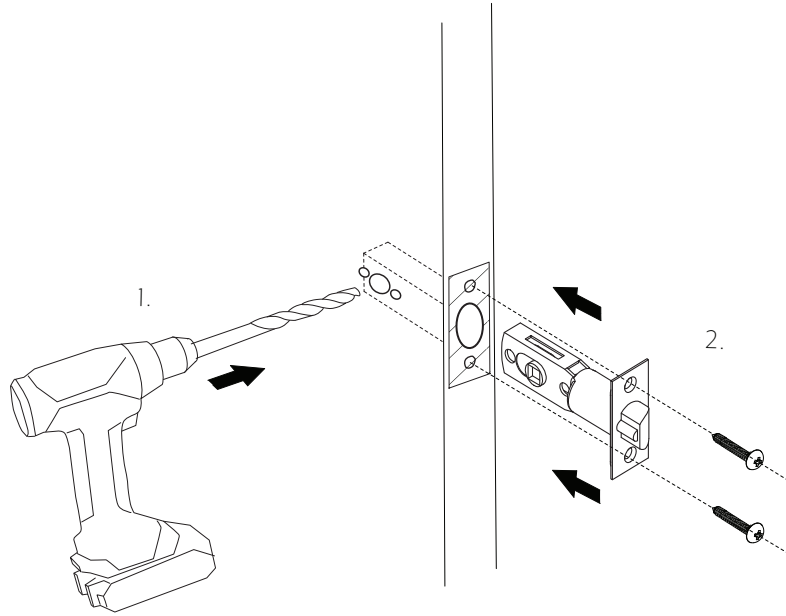
This is a general installation guide - there are many factors that are involved that can alter the installation method. This product install must comply with the standards in your respective country and must be adhered to by your licensed tradesperson.



1

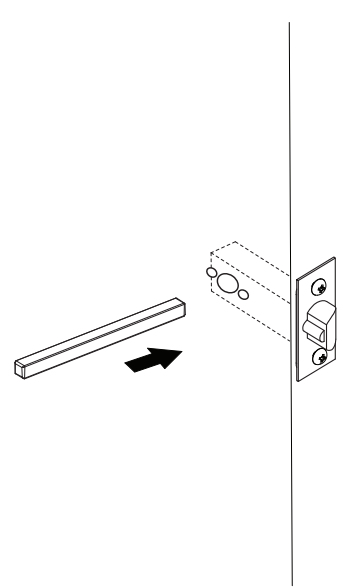
1. Drill prescribed holes into door as per door cutting guide.

2. Install the latch into prescribed hole.



2

Insert latch bolt into hole.

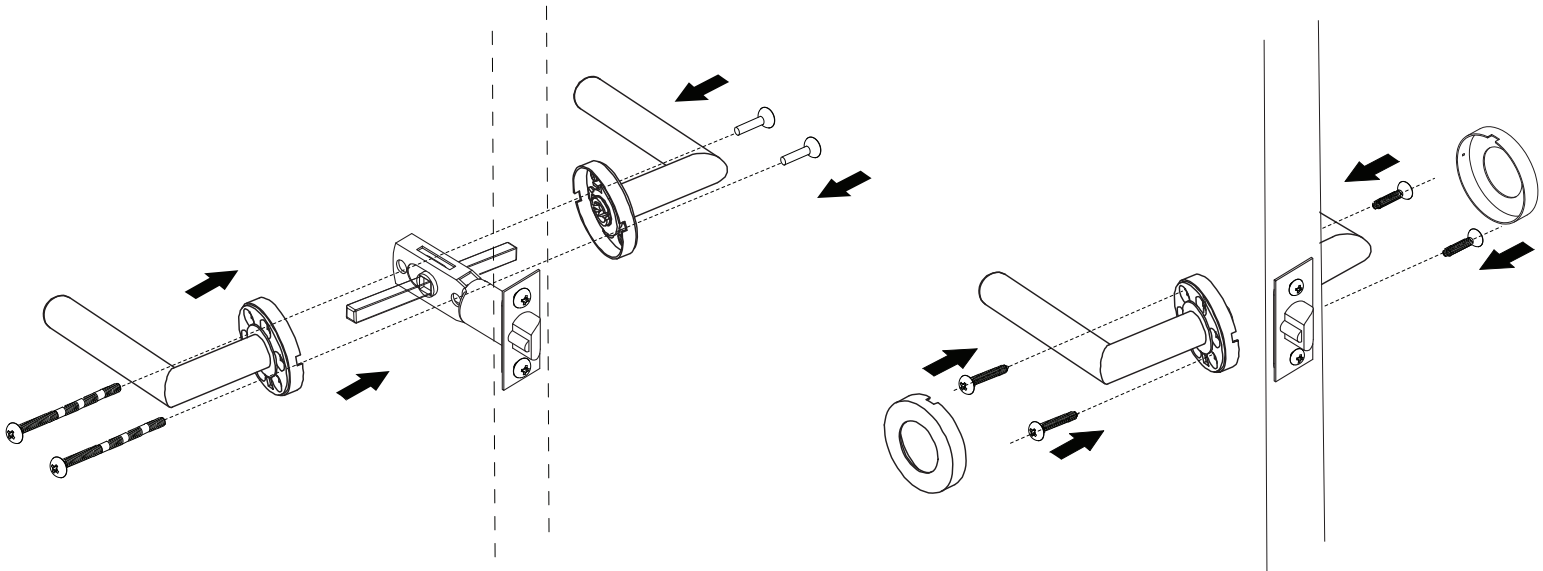


3

Use connection screws to install spring mechanism.

4

On both sides of door, fix remaining screws through handles into door panel. Mount cover plate to handles.



Regularly clean with mild liquid detergent or soap and water.



DO NOT use cream cleaners or bleach. These substances are abrasive.



DO NOT use cleaning pads with abrasive surfaces as this may scratch the material.

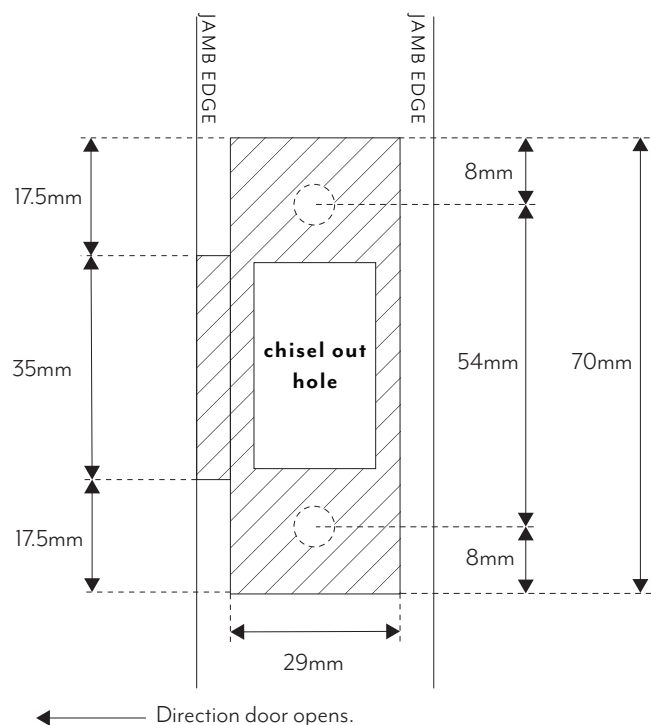
# INSTALLATION GUIDE - DUST BOX/STRIKE PLATE

This product must be installed by a licensed tradesperson.

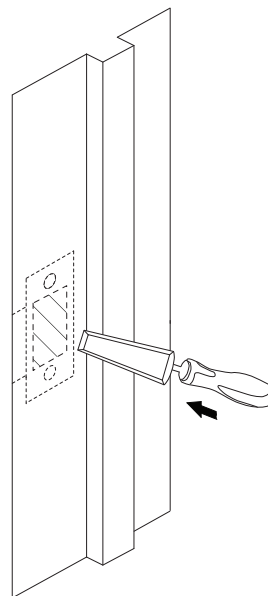
This is a general installation guide - there are many factors that are involved that can alter the installation method. This product install must comply with the standards in your respective country and must be adhered to by your licensed tradesperson.



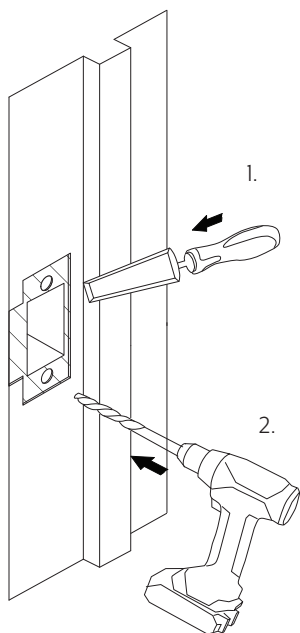
- 1 Use cutting guide to mark out striker plate position in relation to door latch.



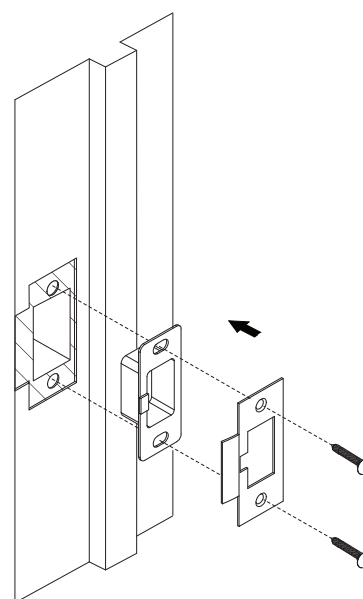
- 2 Chisel out a hole 20mm deep, 34mm high x 20mm wide.



- 3 1. Check in 70mm high x 29mm wide rectangle with 35mm lip as pictured above.  
2. Pre-drill perscribed holes.



- 4 Insert plastic latch recess and screw striker plate into jamb.



Regularly clean with mild liquid detergent or soap and water.



DO NOT use cream cleaners or bleach. These substances are abrasive.



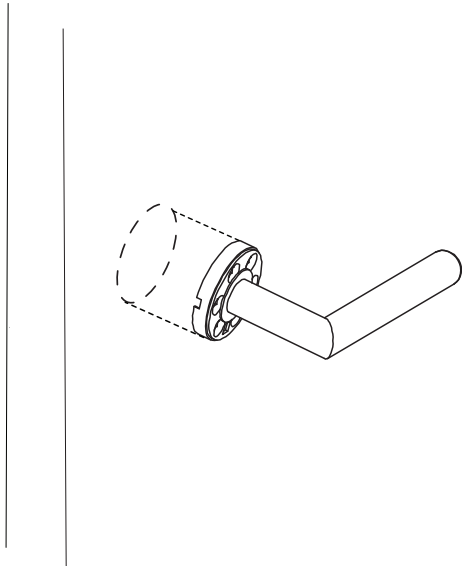
DO NOT use cleaning pads with abrasive surfaces as this may scratch the material.

# INSTALLATION GUIDE - DUMMY HANDLE

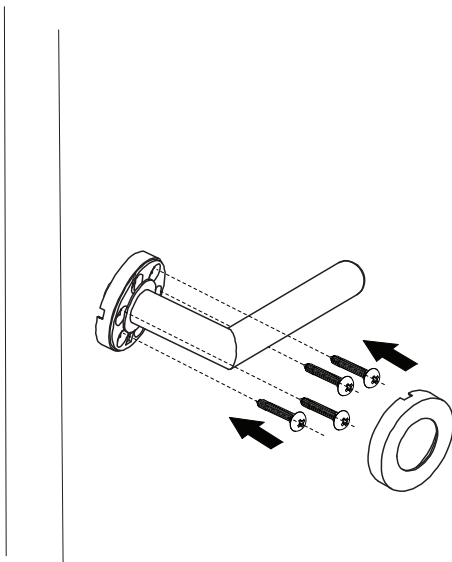


This product must be installed by a licensed tradesperson.  
This is a general installation guide - there are many factors that are involved that can alter the installation method. This product install must comply with the standards in your respective country and must be adhered to by your licensed tradesperson.

1 Mark out desired location of dummy handle.



2 Fix screws through handles into door panel.  
Mount cover plate to handles.



**Note:** If screwing into a hollow core door, screw into solid section to ensure secure installation.

**Note:** It is recommended to use 4 screws for additional security.  
Additional screws are not included with handle.

IN THE BOX		2x Screw caps		
		8x Screws		
		2x Connection screws	2x Handles	
		1x Latch bolt		
		1x Strike plate cover	2x Cover Plates	



Regularly clean with mild liquid detergent or soap and water.



DO NOT use cream cleaners or bleach. These substances are abrasive.



DO NOT use cleaning pads with abrasive surfaces as this may scratch the material.