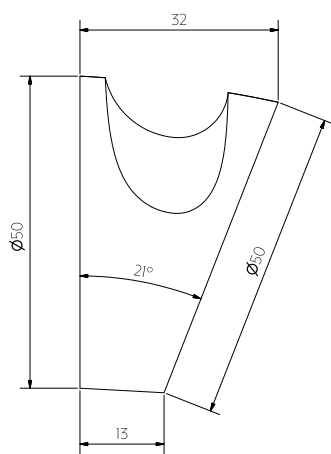
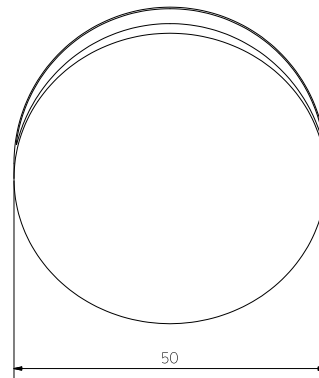


Top View



Side View



Front View

Note: Dimensions are nominal measurements only

SPECIFICATIONS

RECOMMENDED USE

Domestic - Outdoor

MATERIAL

Stainless Steel 316

MOUNTING HARDWARE INCLUDED

Yes, 2x Phillips Head Masonry Screw/ 2x Wall Plug

INSTALLATION GUIDE

Note: This product must be installed by a licensed tradesperson.

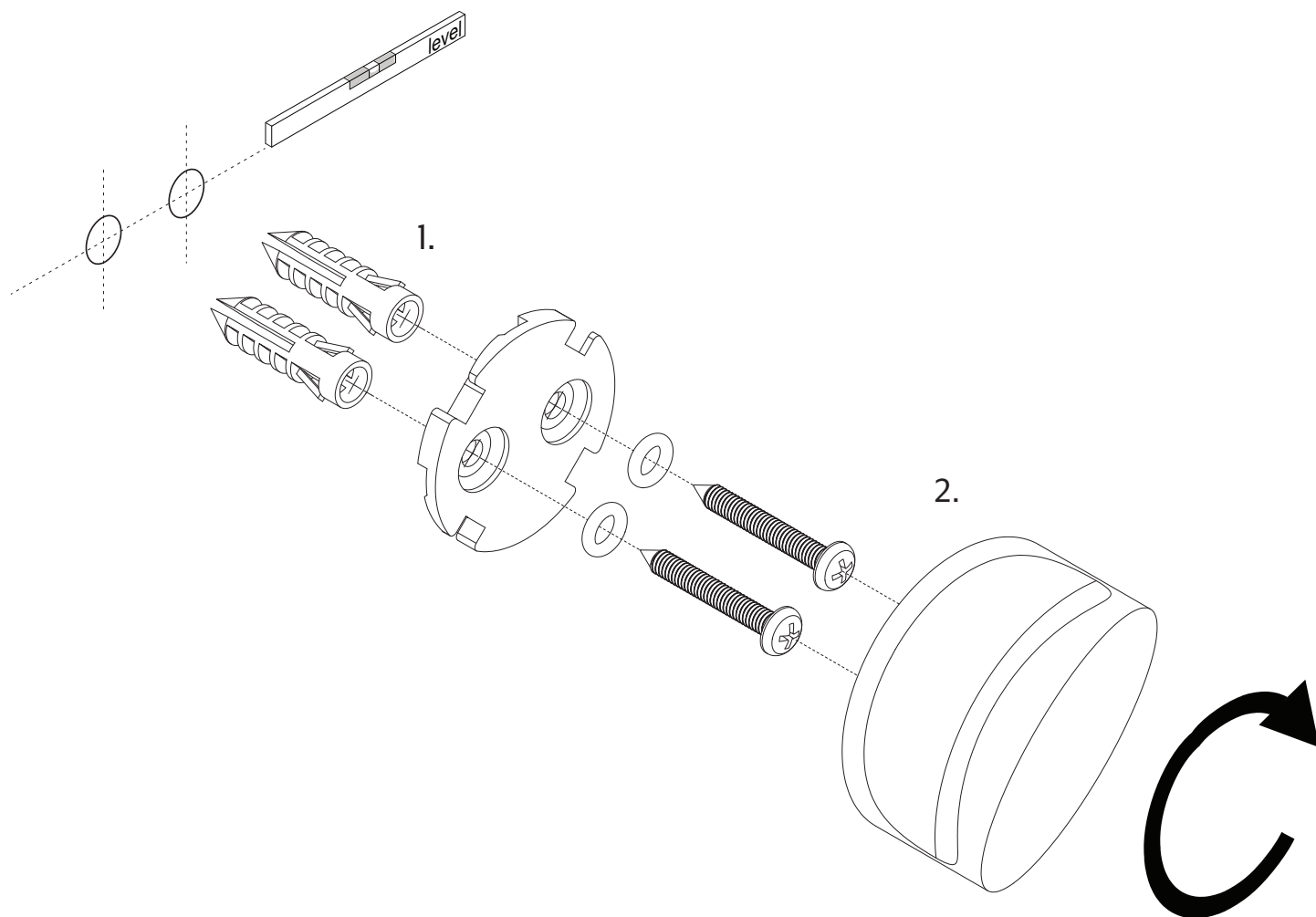
This is a general installation guide - there are many factors that are involved that can alter the installation method.

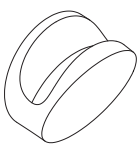




This product install must comply with the standards in your respective country and must be adhered to by your licensed tradesperson.



- 1 Fix the bracket to the wall, ensure there is sufficient wall structure for the screws to bite into. Be sure to use the correct fixing hardware depending on your wall material. Align screw holes either vertically or horizontally and ensure rubber O-ring sits between screw and bracket.
*For easy removal Do Not overtighten screws.

- 2 Push the robe hook over the bracket and turn 45 degrees clockwise to fasten.



IN THE BOX		1x Robe Hook		2x Screws		2x Rubber O-Ring
		1x Bracket		2x Wall Plugs		



Regularly clean with mild liquid detergent or soap and water.



DO NOT use cream cleaners or bleach. These substances are abrasive.



DO NOT use cleaning pads with abrasive surfaces as this may scratch the material.