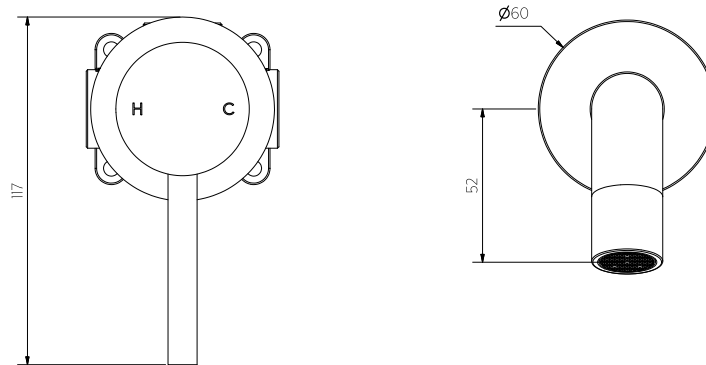


Side View



Front View

Note: Dimensions are nominal measurements only



SPECIFICATIONS

MATERIAL

316 Stainless Steel

TEMPERATURE RATING

Maximum continuous working temperature 75°C
If the water temperature exceeds 75°C, an approved tempering valve must be fitted

PRESSURE RATING

Recommended minimum working pressure 150kPa
Recommended maximum working pressure 500kPa
Hot and cold water inlet pressure should be equal

SUITABLE HOT WATER UNITS

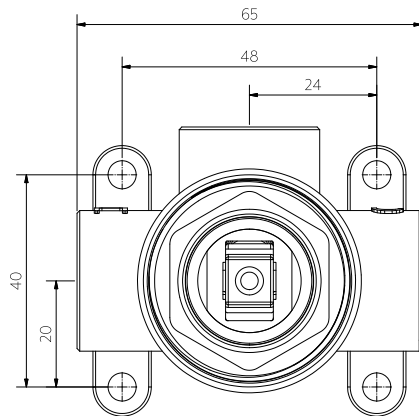
Storage tank: Yes
Continuous Flow: Yes
Gravity Feed: Not suitable

STANDARDS

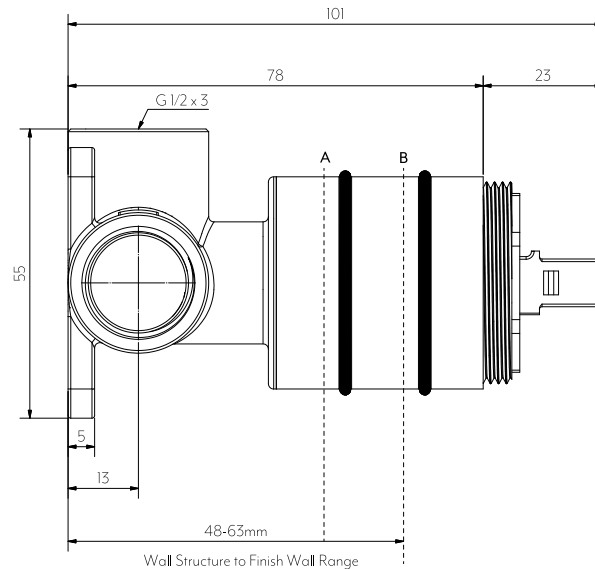
WELS 5 Star, 5.5L/min, T39900

PACKAGING

Box 1 of 3 In-Wall Minimal Mixer Body SS-316 (Rough-In)
Box 2 of 3 Sola Minimal Handle Kit (Fit-Off)
Box 3 of 3 Sola Wall Mounted Spout (Fit-Off)



Front View



Side View

DISCLAIMER: To achieve infinity (interchangeable sleeves) finish wall must fall between point A and B. Please ensure waterproofing is set back from finish wall and does not obstruct sleeves.

Note: Dimensions are nominal measurements only

SPECIFICATIONS

RECOMMENDED USE

Domestic

MATERIAL

316 Stainless Steel

PRESSURE RATING

Recommended minimum working pressure 150kPa
Recommended maximum working pressure 500kPa
Hot and cold water inlet pressure should be equal

TEMPERATURE RATING

Maximum continuous working temperature 75°C
If the water temperature exceeds 75°C, an approved tempering valve must be fitted

STANDARDS

AS/NZS 3718:2005, WM-022852

INSTALLATION GUIDE

Note: This product must be installed by a licensed plumber. This is a general installation guide - there are many factors involved that can alter the installation method. **AU/NZ:** For installations within Australia and New Zealand, this product must be installed in compliance with AS/NZS 3500. **UK:** For installations in the United Kingdom this product must be installed in compliance with the Water Supply (Water Fittings) Regulations and Water Supply (Water Fittings) (Scotland) Byelaws. **Other:** For installations outside these countries, this product must be installed in compliance with the standards in your respective country.



ROUGH IN

See Specification image for finish wall setback

1

Fasten screws to secure the wall mixer into wall structure.

2

Attach water supply and water outlet.
TEST AND CHECK FOR LEAKS.

3

Sheeting and waterproof layer can now be applied.

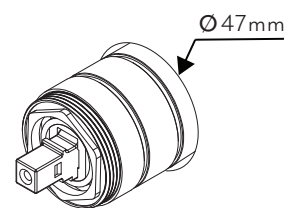
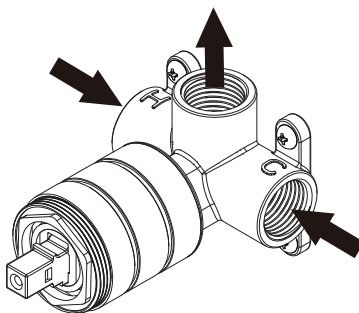
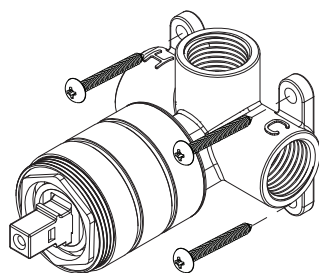
*Ensure cutout in finish wall is 47mm diameter.

DO NOT WATERPROOF SLEEVE.

Please ensure that the hole is big enough to allow for the sleeve to slide on at fit-off stage.

Note for Aliro Handle Kit Install:

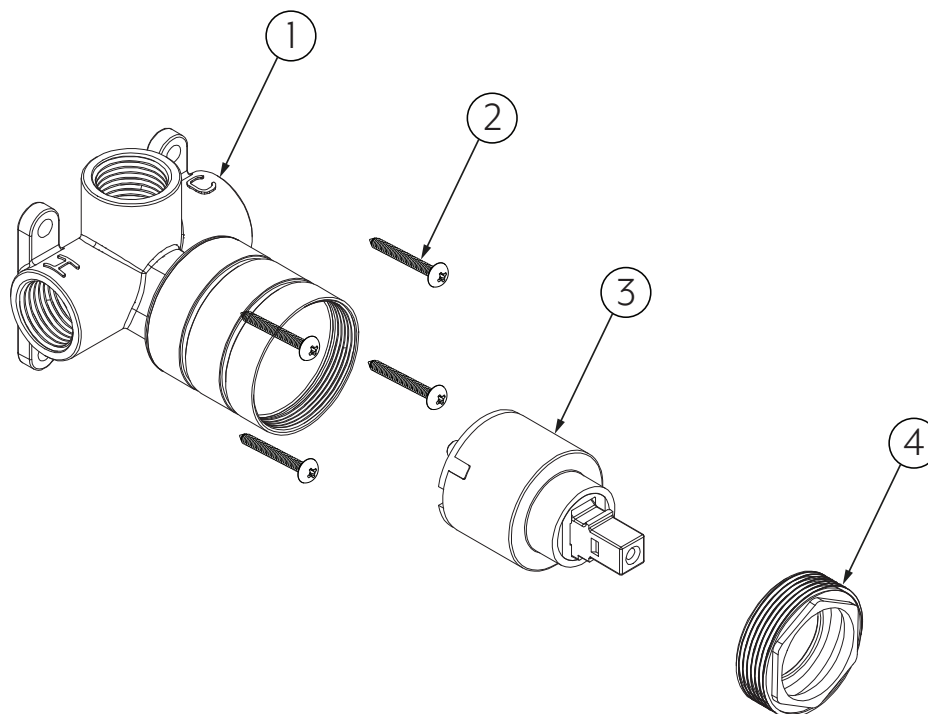
Ensure setback is compliant with
AS1428.1:2021



Note: For handle kit installation guide please refer to their respective install guides. This can be found on our website.

IN THE BOX (IN-WALL)

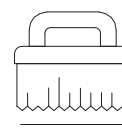
1. Body
2. Fixing Screws
3. Cartridge
4. Locking nut



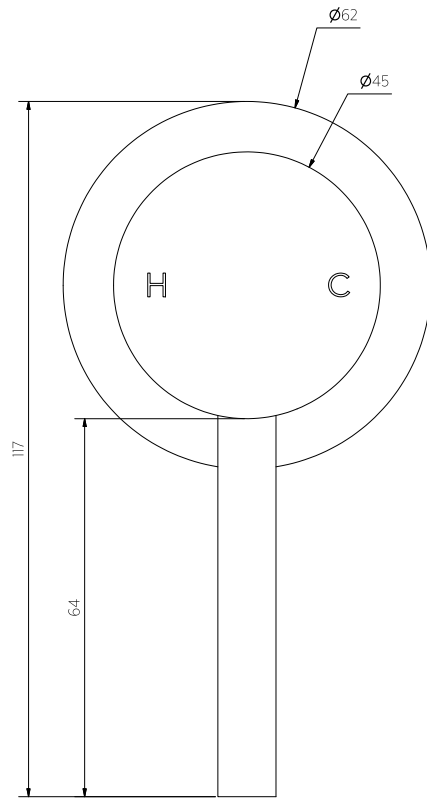
Regularly clean with mild liquid detergent or soap and water



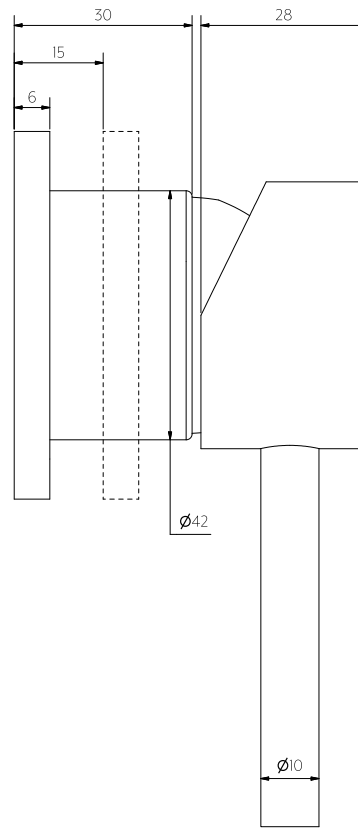
DO NOT use cream cleaners or bleach. These substances are abrasive



DO NOT use cleaning pads with abrasive surfaces as this may scratch the material



Front View



Side View

Note: Dimensions are nominal measurements only

SPECIFICATIONS

RECOMMENDED USE

Domestic

MATERIAL

316 Stainless Steel

INSTALLATION GUIDE

Note: This product must be installed by a licensed plumber. This is a general installation guide - there are many factors involved that can alter the installation method. **AU/NZ:** For installations within Australia and New Zealand, this product must be installed in compliance with AS/NZS 3500. **UK:** For installations in the United Kingdom this product must be installed in compliance with the Water Supply (Water Fittings) Regulations and Water Supply (Water Fittings) (Scotland) Byelaws. **Other:** For installations outside these countries, this product must be installed in compliance with the standards in your respective country.

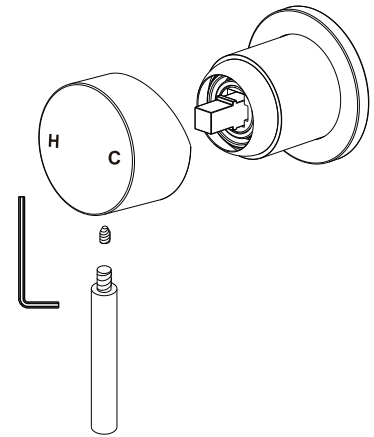
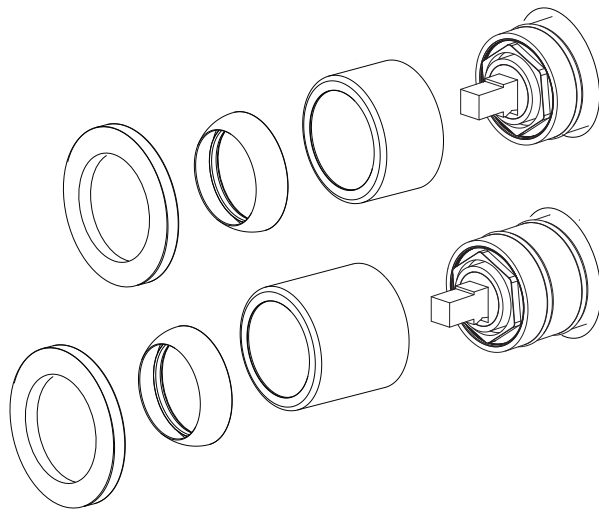


See 316 Stainless Steel In Wall Mixer Body install guide for Steps 1 - 3 (Rough In)

FIT OFF

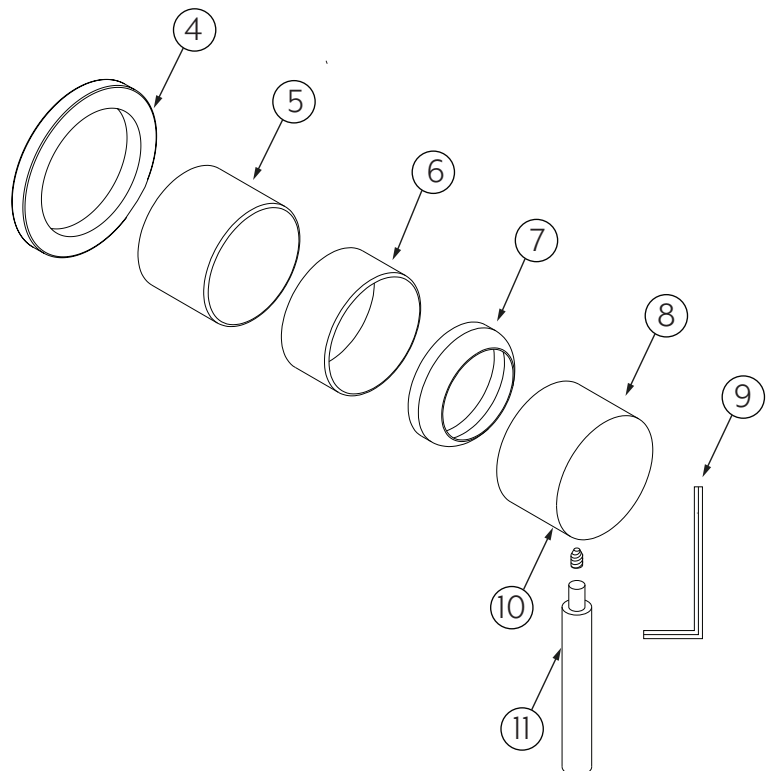
- 4 Push the sleeve over the body until it is as far back as possible and nut thread is exposed. Screw the dome onto the brass fitting and tighten. Select either short or long cover sleeve according to in wall set back established in Rough In (see 316 Stainless Steel In Wall Mixer Body install guide for more info).

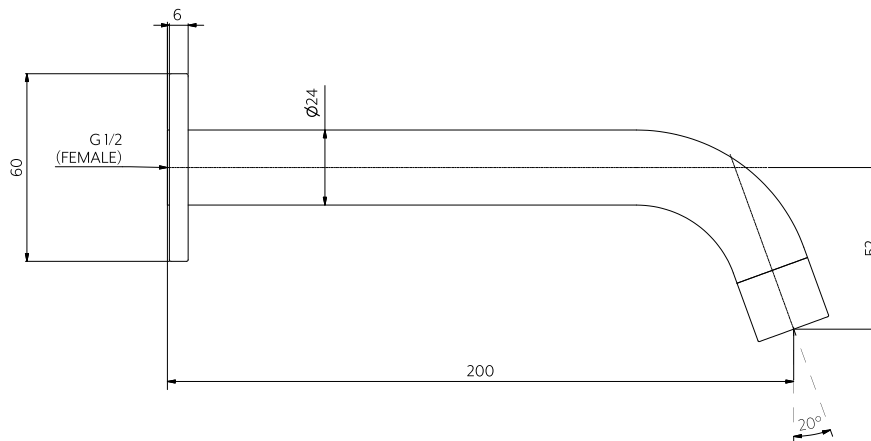
- 5 Place the handle onto the fitting. Fasten the grub screw firmly with the allen key.



IN THE BOX (HANDLE KIT)

- 4. Back plate
- 5. Long cover sleeve
- 6. Short cover sleeve
- 7. Dome
- 8. Mixer handle
- 9. Allen key
- 10. Grub screw
- 11. Handle





SIDE VIEW

Note: Dimensions are nominal measurements only

SPECIFICATIONS

RECOMMENDED USE

Domestic

MATERIAL

316 Stainless Steel

TEMPERATURE RATING

Maximum continuous working temperature 75°C
If the water temperature exceeds 75°C, an approved tempering valve must be fitted

PRESSURE RATING

Recommended minimum working pressure 150kPa
Recommended maximum working pressure 500kPa
Hot and cold water inlet pressure should be equal

SUITABLE HOT WATER UNITS

Storage tank: Yes
Continuous Flow: Yes
Gravity Feed: Not suitable

STANDARDS

WELS 5 Star, 5.5L/min, T39796

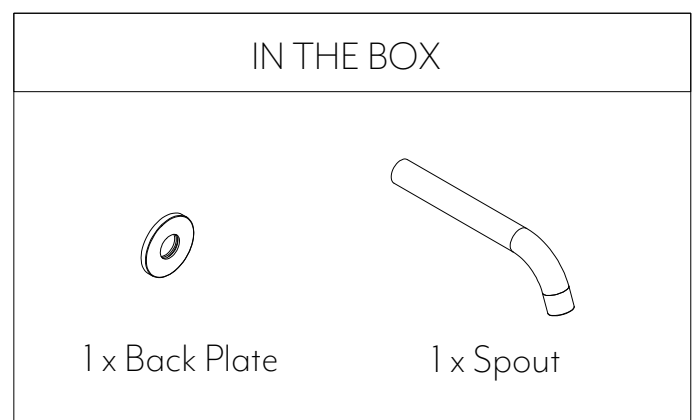
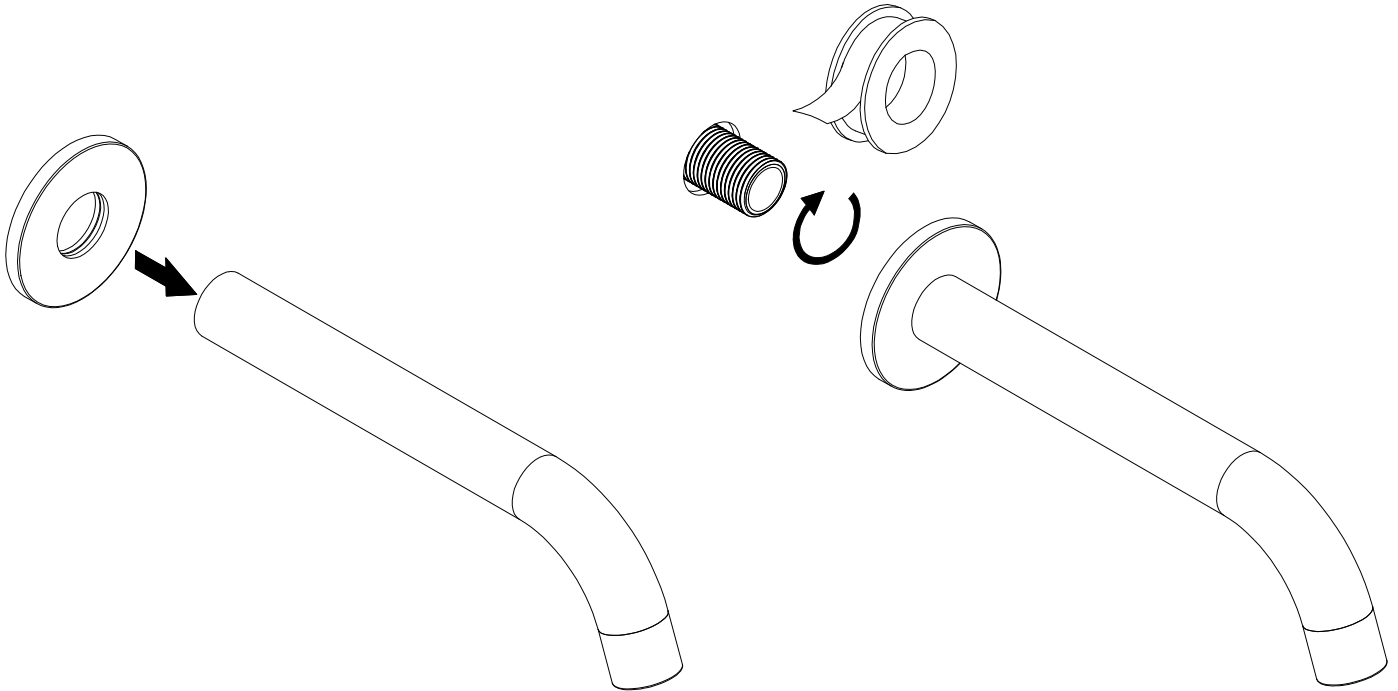
INSTALLATION GUIDE

Note: This product must be installed by a licensed plumber. This is a general installation guide - there are many factors involved that can alter the installation method. **AU/NZ:** For installations within Australia and New Zealand, this product must be installed in compliance with AS/NZS 3500. **UK:** For installations in the United Kingdom this product must be installed in compliance with the Water Supply (Water Fittings) Regulations and Water Supply (Water Fittings) (Scotland) Byelaws. **Other:** For installations outside these countries, this product must be installed in compliance with the standards in your respective country.



- ① Slide the back plate onto the spout, make sure that the rubber is firmly in place to protect the spout and stop the back plate from moving around.

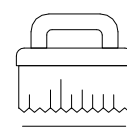
- ② Apply teflon thread tape to the breech point, twist the spout on and hand tighten.



Regularly clean with mild liquid detergent or soap and water



DO NOT use cream cleaners or bleach. These substances are abrasive



DO NOT use cleaning pads with abrasive surfaces as this may scratch the material