

Note: Dimensions are nominal measurements only

SPECIFICATIONS

RECOMMENDED USE

Domestic

MATERIAL

316 Stainless Steel

INSTALLATION GUIDE

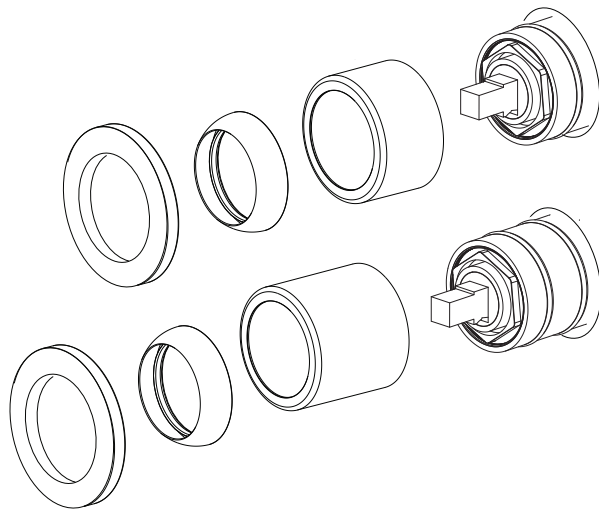
Note: This product must be installed by a licensed plumber. This is a general installation guide - there are many factors involved that can alter the installation method. **AU/NZ:** For installations within Australia and New Zealand, this product must be installed in compliance with AS/NZS 3500. **UK:** For installations in the United Kingdom this product must be installed in compliance with the Water Supply (Water Fittings) Regulations and Water Supply (Water Fittings) (Scotland) Byelaws. **Other:** For installations outside these countries, this product must be installed in compliance with the standards in your respective country.



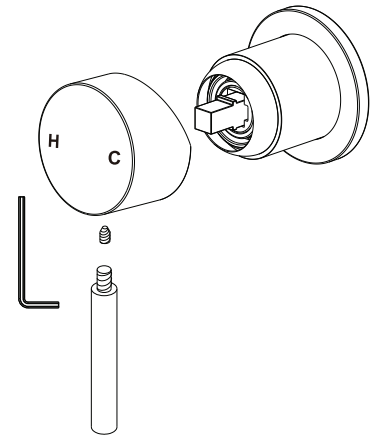
See 316 Stainless Steel In Wall Mixer Body install guide for Steps 1 - 3 (Rough In)

FIT OFF

- 4 Push the sleeve over the body until it is as far back as possible and nut thread is exposed. Screw the dome onto the brass fitting and tighten. Select either short or long cover sleeve according to in wall set back established in Rough In (see 316 Stainless Steel In Wall Mixer Body install guide for more info).



- 5 Place the handle onto the fitting. Fasten the grub screw firmly with the allen key.



IN THE BOX (HANDLE KIT)

- 4. Back plate
- 5. Long cover sleeve
- 6. Short cover sleeve
- 7. Dome
- 8. Mixer handle
- 9. Allen key
- 10. Grub screw
- 11. Handle

