

Top View



Front View

Note: Dimensions are nominal measurements only

SPECIFICATIONS

RECOMMENDED USE

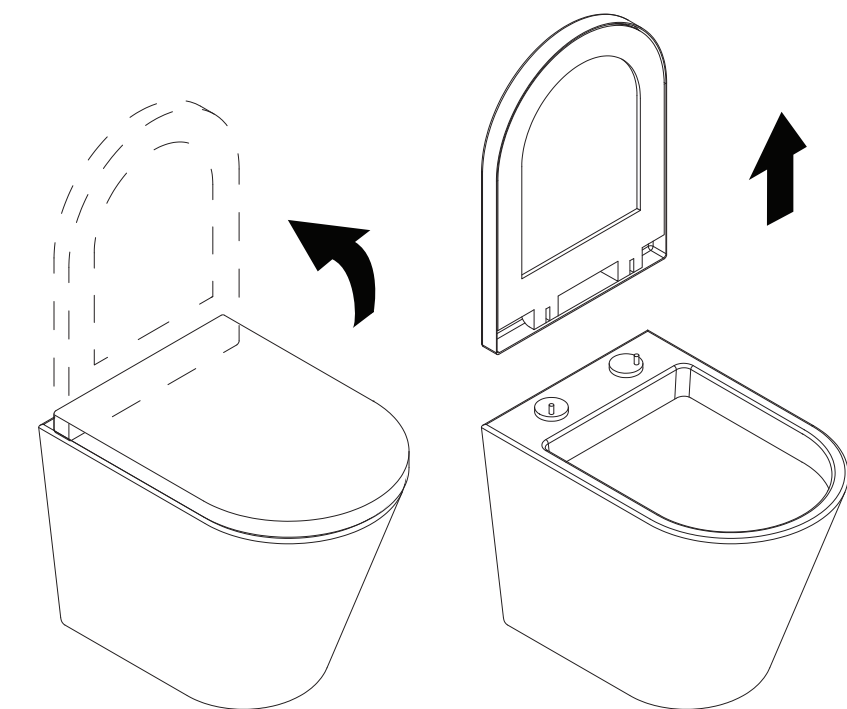
Domestic

MATERIAL

Stainless Steel

INSTALLATION GUIDE

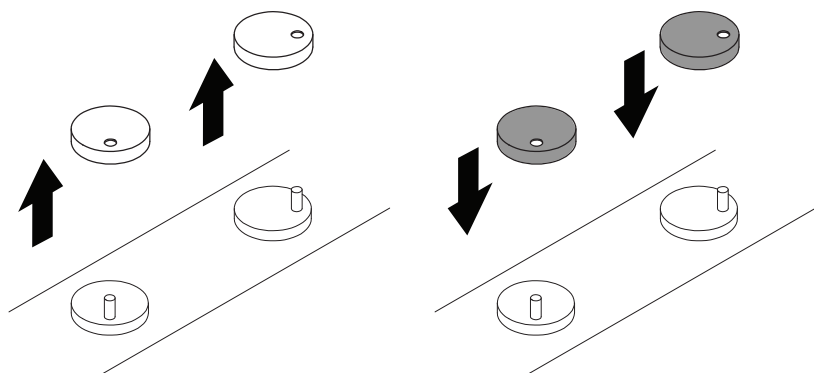
Note: This product must be installed by a licensed plumber.
This is a general installation guide - there are many factors that are involved that can alter the installation method. The standards in your respective country must be adhered to by your licensed tradesperson.



- 1 Lift toilet seat into open vertical position.

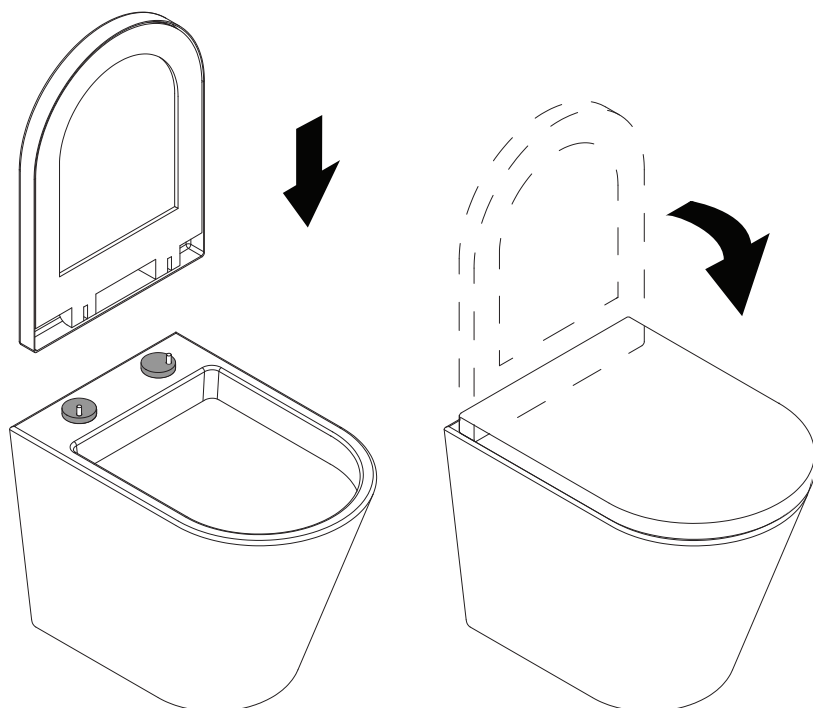
Remove toilet seat by unfixing toilet seat brackets.

Note: Seat bracket fixing method varies with toilet seat design.



- 2 Remove existing toilet clips from brackets.

Replace with **ABI Sela Toilet Clips**.



- 3 Mount toilet seat back into position by fixing toilet seat brackets.

Lower toilet seat into closed position.

