

Note: Includes transformer (240v to 12v)

Note: Dimensions are nominal measurements only

SPECIFICATIONS

RECOMMENDED USE

Domestic

MATERIAL

Solid Brass

MOUNTING HARDWARE INCLUDED

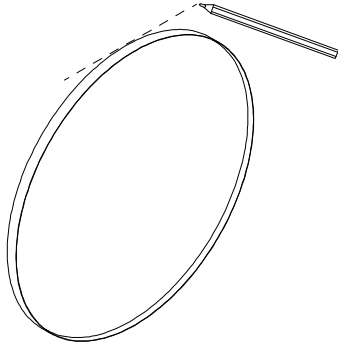
Yes, 2x Philips head screws and plugs

INSTALLATION GUIDE

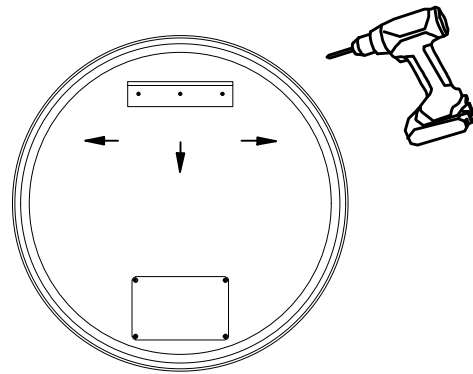
Note: This product must be installed by a licensed electrician. This is a general installation guide - there are many factors that are involved that can alter the installation method. This product must comply with the standards in your respective country and must be adhered to by your licensed tradesperson. [AS/NZS 3000:2018]

- ① Choose a suitable location for your mirror. Ensure your electrical wire is behind the mirror and **not obstructing the bracket or transformer box**

Note: The wall bracket must be installed into adequate wall structure.

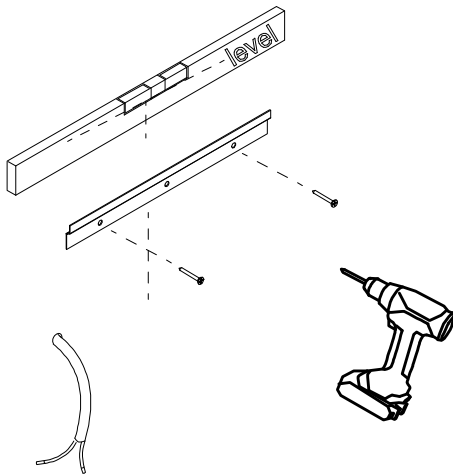


- ② If necessary you can reposition the bracket to align with your wall's internal structure.

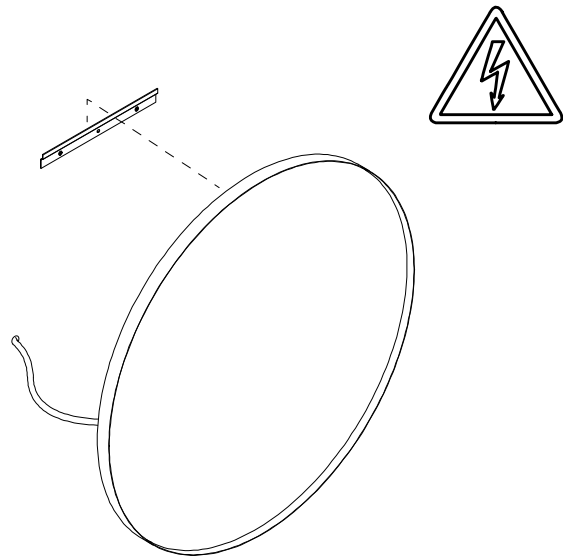



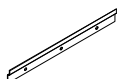


- ③ Fix the wall bracket to the wall.

Note: The supplied fixings are for timber and cement you will need to purchase alternative fixing screws if your wall is a different construction.



- ④ Ensure a licensed electrician connects the wiring. Attach the mirror. Ensure the brackets interlock and that the mirror is secure. Test and commission.



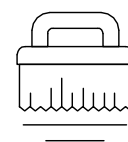
In The Box	
 1x Mirror	 1x Wall Brackets
 2x Fixing Screws (30mm)	 2x Plugs



Regularly clean with mild liquid detergent or soap and water



DO NOT use cream cleaners or bleach. These substances are abrasive



DO NOT use cleaning pads with abrasive surfaces as this may scratch the material