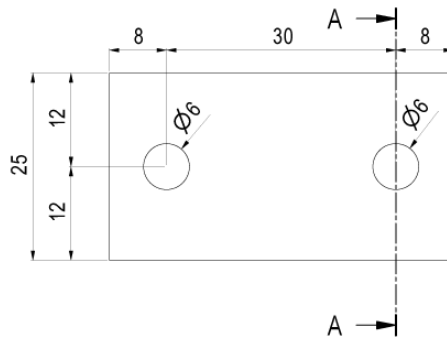
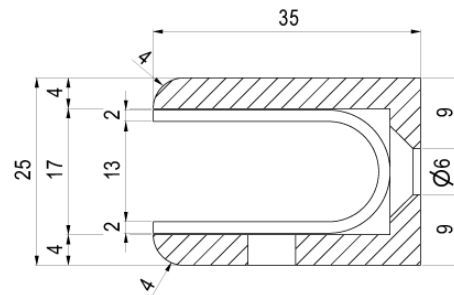


Back View



Side View



Section View A-A

Note: Dimensions are nominal measurements only

SPECIFICATIONS

RECOMMENDED USE

Domestic/Commercial

MATERIAL

304 Stainless Steel

INSTALLATION

If glass is less than 12mm - plastic packers or silicone are required (supplied by glazier)

GLASS THICKNESS

8-12mm (no holes required)

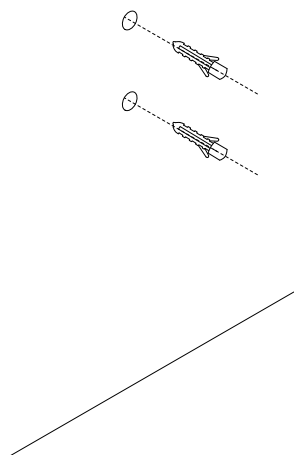
INSTALLATION GUIDE

This product must be installed by a licensed tradesperson.

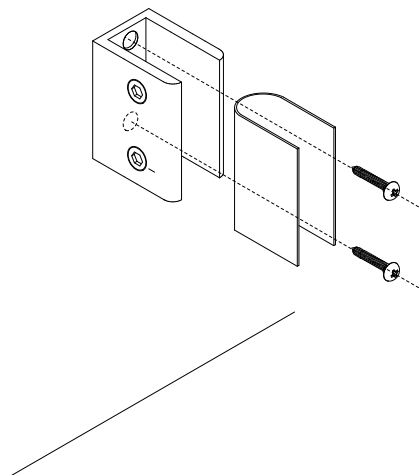
This is a general installation guide - there are many factors that are involved that can alter the installation method. This product install must comply with the standards in your respective country and must be adhered to by your licensed tradesperson.



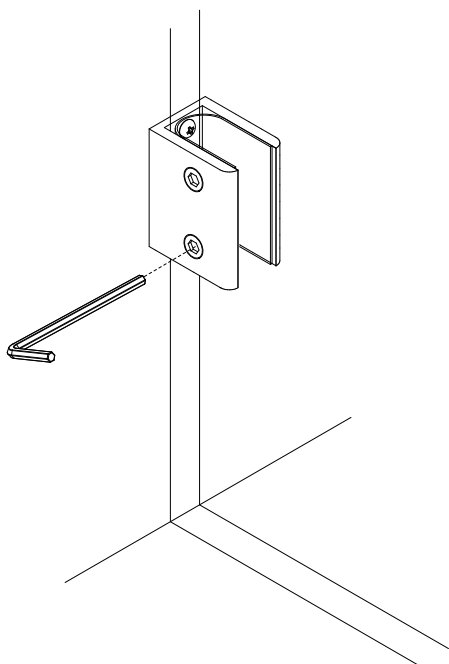
- 1 Mark out desired position for clips in relation to shower screen location. Drill holes in desired position and insert wall plugs.



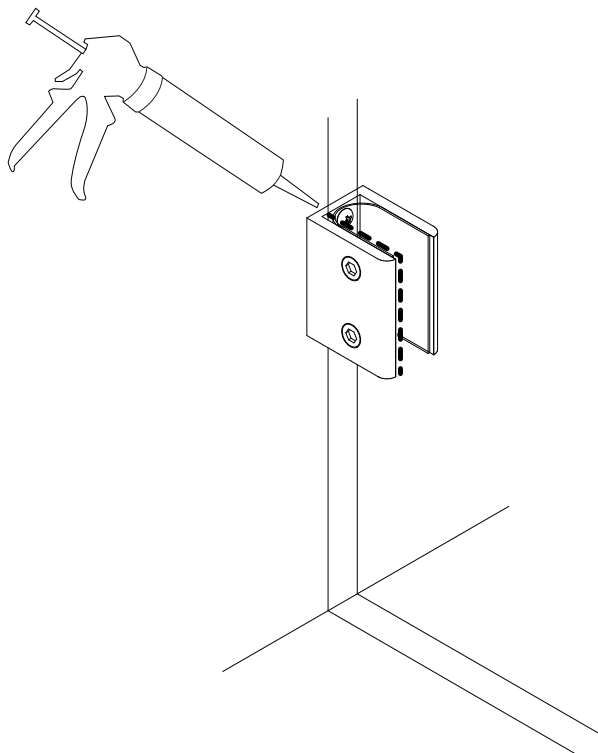
- 2 Fix clip to wall through plastic pad using fixings provided.



- 3 Install Glass. Tighten grub screws using an allen key. This will clamp the glass to hold it in place.



- 4 If necessary apply silicone between the clip and glass.



Regularly clean with mild liquid detergent or soap and water.



DO NOT use cream cleaners or bleach. These substances are abrasive.



DO NOT use cleaning pads with abrasive surfaces as this may scratch the material.