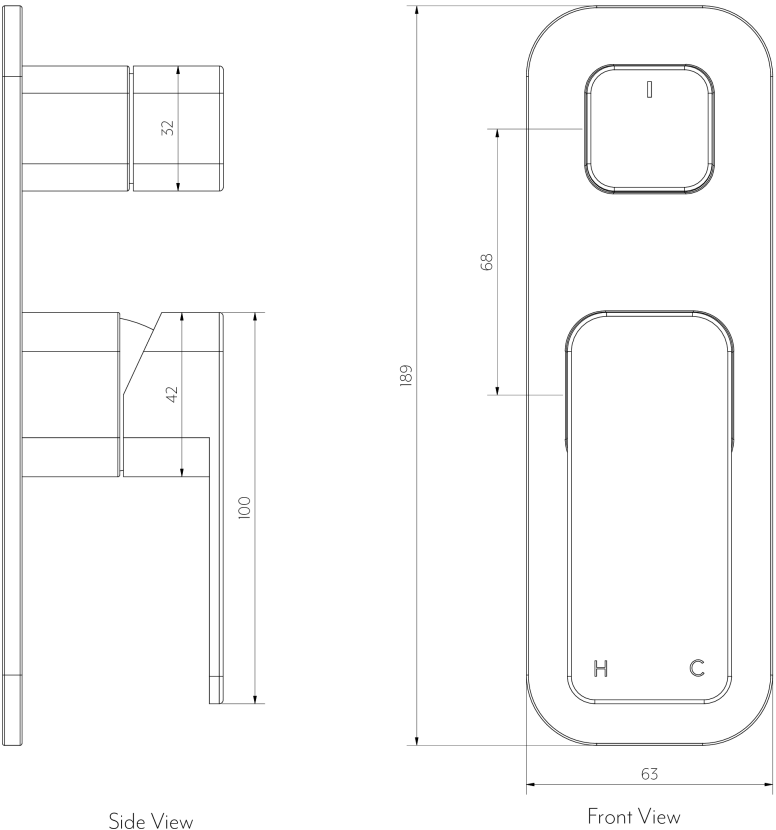


NESSO SHOWER TOP DIVERTER HANDLE KIT



Side View

Front View

* Please note Mixer handle, Mixer sleeve and Dome not included in box.

Note: Dimensions are nominal measurements only

SPECIFICATIONS

RECOMMENDED USE

Domestic / Commercial

MATERIAL

Stainless Steel 304

INSTALLATION GUIDE

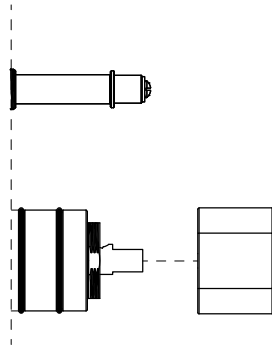
Note: This product must be installed by a licensed plumber. This is a general installation guide - there are many factors involved that can alter the installation method. **AU/NZ:** For installations within Australia and New Zealand, this product must be installed in compliance with AS/NZS 3500. **UK:** For installations in the United Kingdom this product must be installed in compliance with the Water Supply (Water Fittings) Regulations and Water Supply (Water Fittings) (Scotland) Byelaws. **Other:** For installations outside these countries, this product must be installed in compliance with the standards in your respective country.



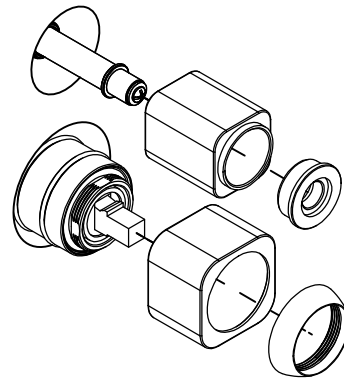
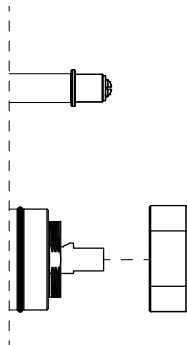
NOTE: See 'In-wall Minimal Diverter body -SS304' installation guide for in-wall set out.

- ① Choose mixer sleeve based on how far your in-wall body protrudes from finish wall.
- ② 1. Screw on diverter sleeve and insert plastic collar.
2. Slide on mixer sleeve and screw dome on to secure.

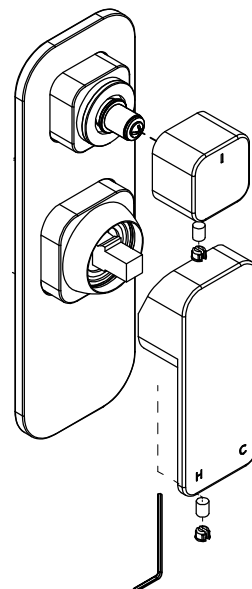
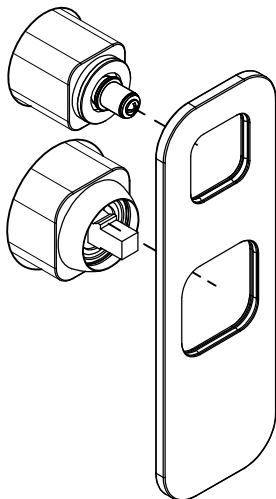
A - Long sleeve



B - Short sleeve



- ③ Slide back plate over both sleeves ensuring not to scratch.
- ④ Install both handles by tightening grub screws with provided Allen key and inserting grub screw covers.



WHAT'S IN THE BOX

1x Diverter BP



1x Diverter handle



1x Diverter sleeve



1x Plastic collar



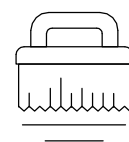
1x Grub screw cover



Regularly clean with mild liquid detergent or soap and water



DO NOT use cream cleaners or bleach. These substances are abrasive



DO NOT use cleaning pads with abrasive surfaces as this may scratch the material