

Note: Dimensions are nominal measurements only

SPECIFICATIONS

RECOMMENDED USE WARRANTY	Domestic / Commercial Click here for warranty periods
MATERIAL	Stainless Steel 304
TEMPERATURE RATING	Maximum continuous working temperature 75°C If the water temperature exceeds 75°C,an approved tempering valve must be fitted
PRESSURE RATING	Recommended minimum working pressure 150kPa Recommended maximum working pressure 500kPa Hot and cold water inlet pressure should be equal
SUITABLE HOT WATER UNITS	Storage tank: Yes Continuous Flow: Yes Gravity Feed: Not suitable

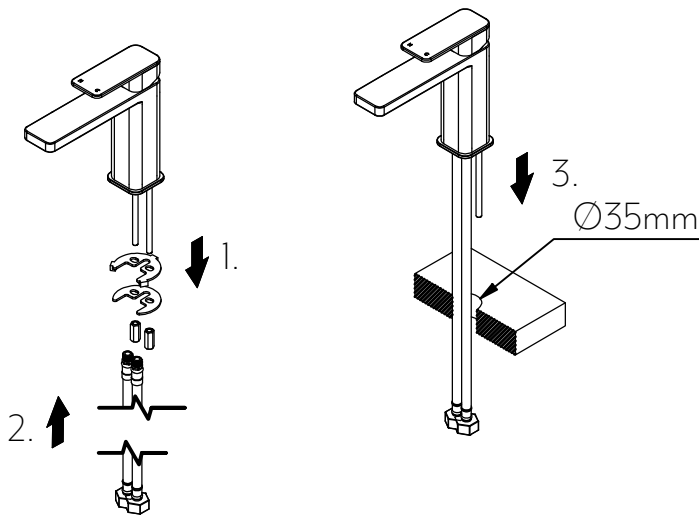
INSTALLATION GUIDE

Note: This product must be installed by a licensed plumber. This is a general installation guide - there are many factors involved that can alter the installation method. **AU/NZ:** For installations within Australia and New Zealand, this product must be installed in compliance with AS/NZS 3500. **UK:** For installations in the United Kingdom this product must be installed in compliance with the Water Supply (Water Fittings) Regulations and Water Supply (Water Fittings) (Scotland) Byelaws. **Other:** For installations outside these countries, this product must be installed in compliance with the standards in your respective country.

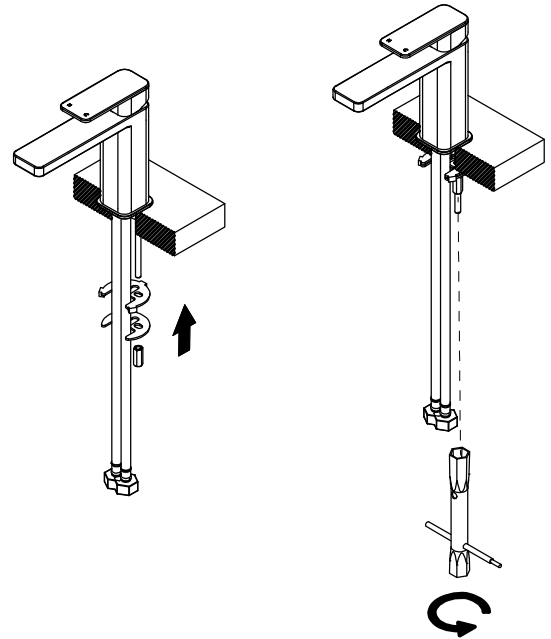
ABI
INTERIORS

① Mark hole in bench top at desired location and drill 35mm hole.

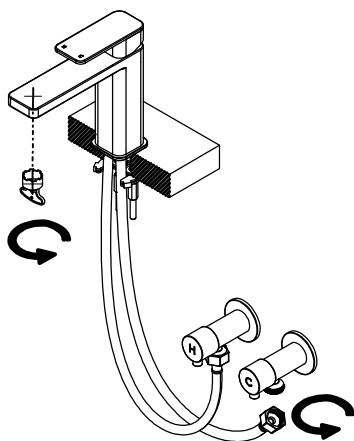
1. Remove locking nuts and washers.
 2. Install flexi hoses into basin mixer.
 3. Feed flexi hoses through bench top cutout one at a time.
- *Note Ensure rubber is correctly recessed into base plate.



② Replace both washers, ensuring that the rubber washer goes on first. Replace locking nuts and use an extended wrench socket or spanner to tighten.

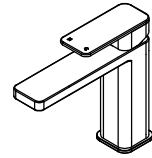


③ Connect Flexi hoses to hot and cold outlets and tighten. Tighten aerator with provided tool so that it cannot be removed by hand. Test and commission for leaks.



In The Box

1 x Basin mixer



1 x Rubber washer



1 x Metal washer



2 x Fixing rod



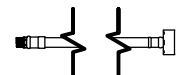
2 x Locking nut



1 x Aerator removal tool



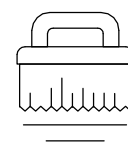
2 x Flexi hose



Regularly clean with mild liquid detergent or soap and water



DO NOT use cream cleaners or bleach. These substances are abrasive



DO NOT use cleaning pads with abrasive surfaces as this may scratch the material