

**Note: Dimensions are nominal measurements only**

## SPECIFICATIONS

### RECOMMENDED USE | WARRANTY

Domestic/ Commercial | [Click here for warranty periods](#)

### MATERIAL

304 Stainless Steel

### TEMPERATURE RATING

Maximum continuous working temperature 75°C  
Intended for cold water only

### PRESSURE RATING

Recommended minimum working pressure 150kPa  
Recommended maximum working pressure 350kPa

# INSTALLATION GUIDE

**Note:** This product must be installed by a licensed plumber. This is a general installation guide - there are many factors involved that can alter the installation method. **AU/NZ:** For installations within Australia and New Zealand, this product must be installed in compliance with AS 3500. **UK:** For installations in the United Kingdom this product must be installed in compliance with the Water Supply (Water Fittings) Regulations and Water Supply (Water Fittings) (Scotland) Byelaws. **Other:** For installations outside these countries, this product must be installed in compliance with the standards in your respective country.

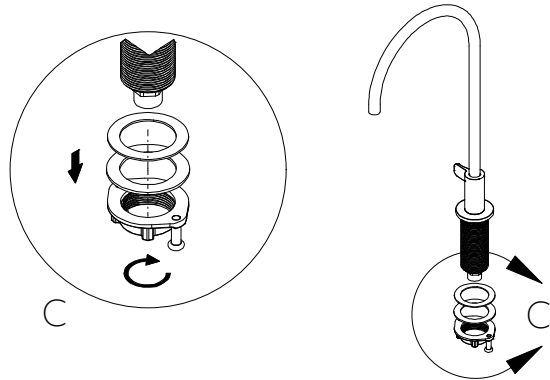
ABI  
INTERIORS

- ① Mark the desired location in the bench, drill a 30mm hole.

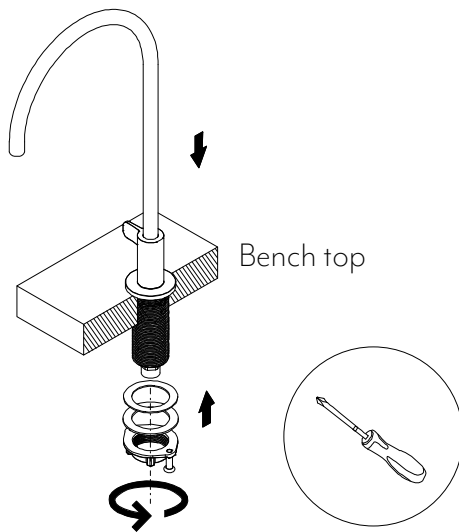


**Note:** the standard 35mm is also fine, but a 30mm hole will ensure a better water barrier stopping water from going into the bench.

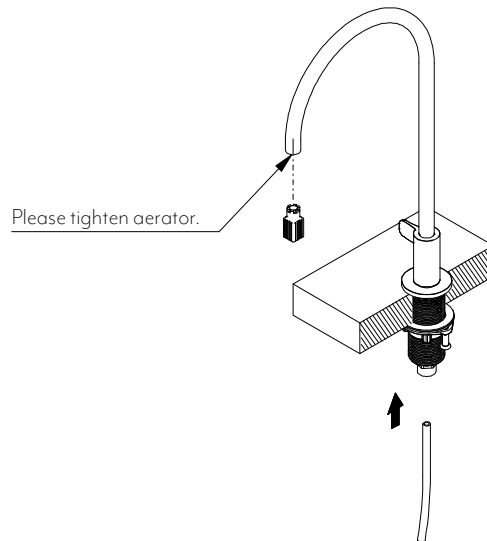
- ② Remove the locking collar and both washers.



- ③ Insert tap into hole, attach the washers and fasten the locking collar. Use a screwdriver to do the last tightening.



- ④ Insert the 6mm fridge hose. Test and commission.



In The Box	

**Note:** For information regarding our filter system please visit our website and find our 3 Stage Undersink Water Filter System.

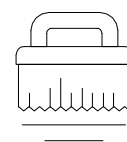
Next page  
To refer to our  
**Exploded View**



Regularly clean with mild liquid detergent or soap and water



DO NOT use cream cleaners or bleach. These substances are abrasive



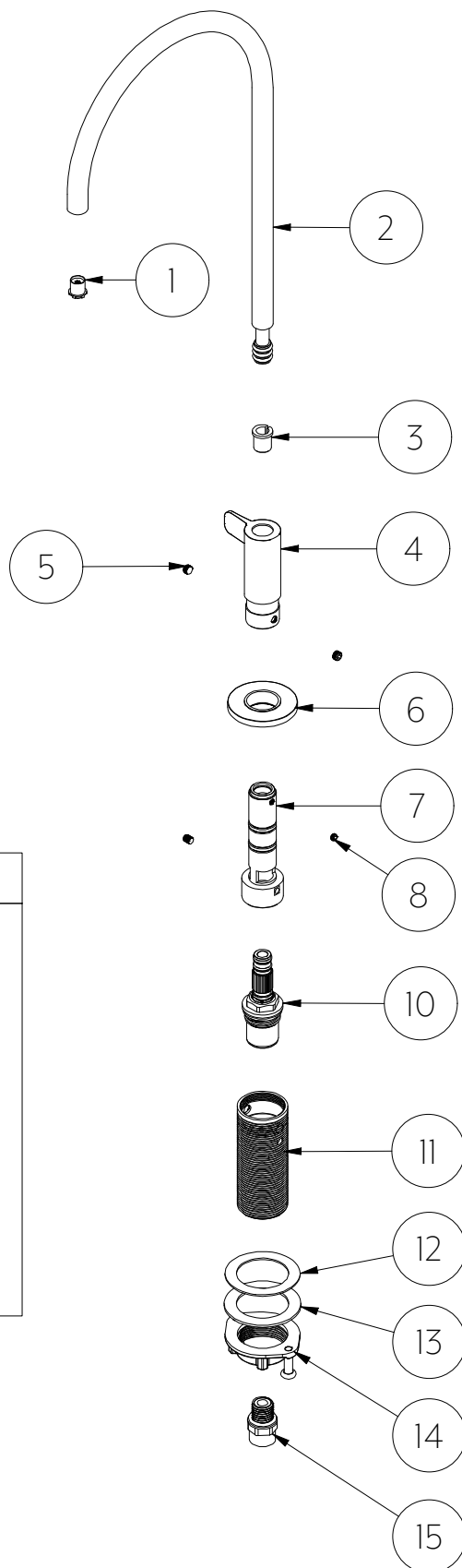
DO NOT use cleaning pads with abrasive surfaces as this may scratch the material

# INSTALLATION GUIDE

**Note:** This product must be installed by a licensed plumber. This is a general installation guide - there are many factors involved that can alter the installation method. **AU/NZ:** For installations within Australia and New Zealand, this product must be installed in compliance with AS 3500. **UK:** For installations in the United Kingdom this product must be installed in compliance with the Water Supply (Water Fittings) Regulations and Water Supply (Water Fittings) (Scotland) Byelaws. **Other:** For installations outside these countries, this product must be installed in compliance with the standards in your respective country.



## Exploded View



### Parts

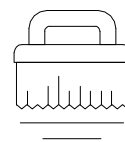
1. Aerator
2. Spout
3. Slip collar
4. Handle
5. Handle grub screw (x2)
6. Base plate
7. Column
8. Spout locking grub screw
9. Column locking grub screw (x2)
10. Spindle
11. Main body
12. Rubber washer
13. Metal washer
14. Locking nut
15. Fridge hose connection



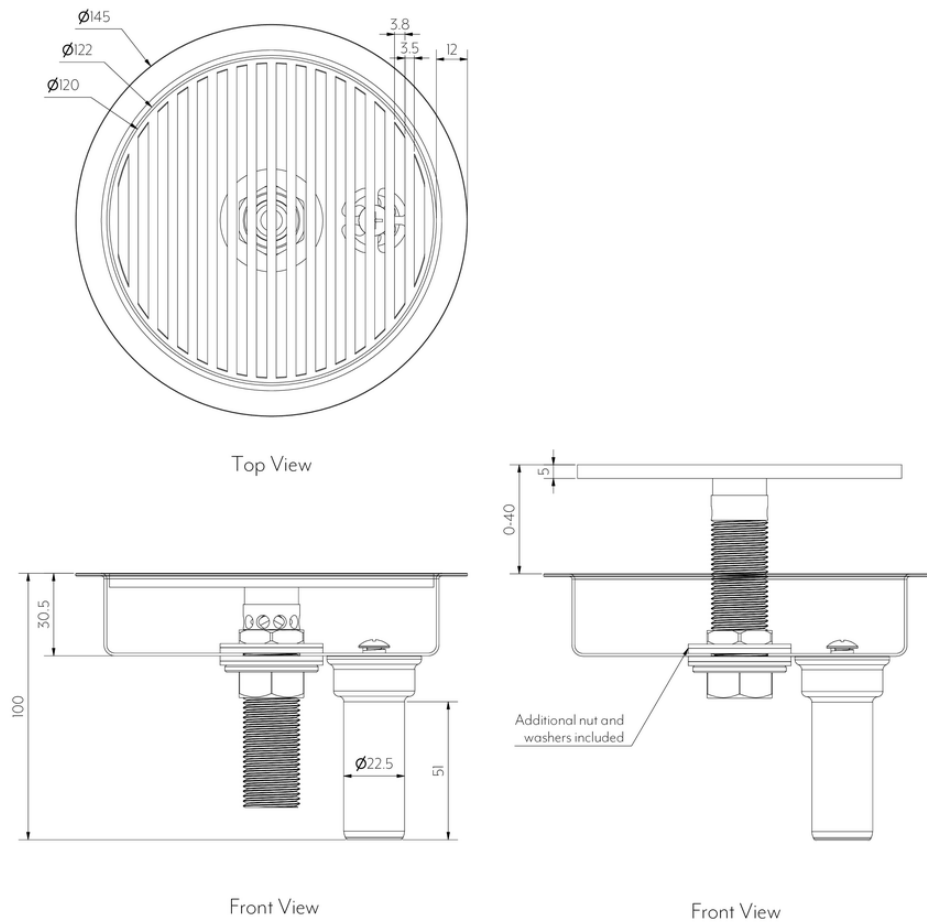
Regularly clean with mild liquid detergent or soap and water



DO NOT use cream cleaners or bleach. These substances are abrasive



DO NOT use cleaning pads with abrasive surfaces as this may scratch the material



**Note:** Dimensions are nominal measurements only

## SPECIFICATIONS

### RECOMMENDED USE

Domestic/ Commercial

### MATERIAL

304 Stainless Steel

### INSTALLATION

Top mount or Undermount

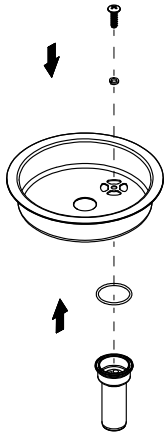
# INSTALLATION GUIDE

**Note:** This product must be installed by a licensed plumber. This is a general installation guide - there are many factors involved that can alter the installation method. **AU/NZ:** For installations within Australia and New Zealand, this product must be installed in compliance with AS/NZS 3500. **UK:** For installations in the United Kingdom this product must be installed in compliance with the Water Supply (Water Fittings) Regulations and Water Supply (Water Fittings) (Scotland) Byelaws. **Other:** For installations outside these countries, this product must be installed in compliance with the standards in your respective country.

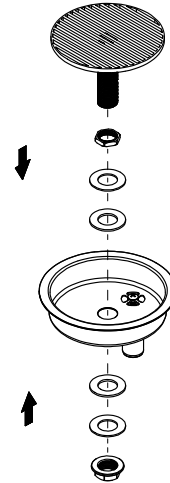


## INSTALLATION - FONT DRAIN - TOP MOUNT

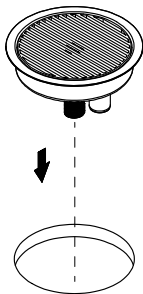
① Assemble the waste outlet as shown below.



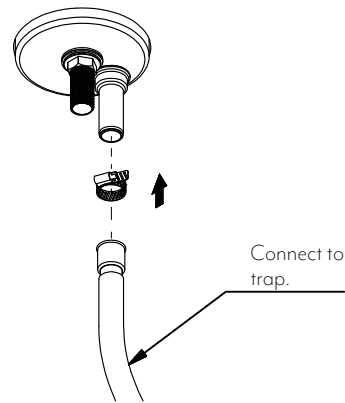
② Assemble the font grate as shown below.



③ Apply silicone around the perimeter of the pre-cut hole. Insert the bowl and push down gently.



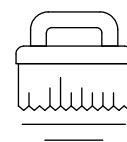
④ Connect the waste outlet to the nipple on your trap or another waste outlet point. Test and commission.



Regularly clean with mild liquid detergent or soap and water



DO NOT use cream cleaners or bleach. These substances are abrasive



DO NOT use cleaning pads with abrasive surfaces as this may scratch the material

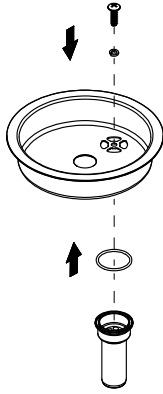
# INSTALLATION GUIDE

**Note:** This product must be installed by a licensed plumber. This is a general installation guide - there are many factors involved that can alter the installation method. **AU/NZ:** For installations within Australia and New Zealand, this product must be installed in compliance with AS/NZS 3500. **UK:** For installations in the United Kingdom this product must be installed in compliance with the Water Supply (Water Fittings) Regulations and Water Supply (Water Fittings) (Scotland) Byelaws. **Other:** For installations outside these countries, this product must be installed in compliance with the standards in your respective country.



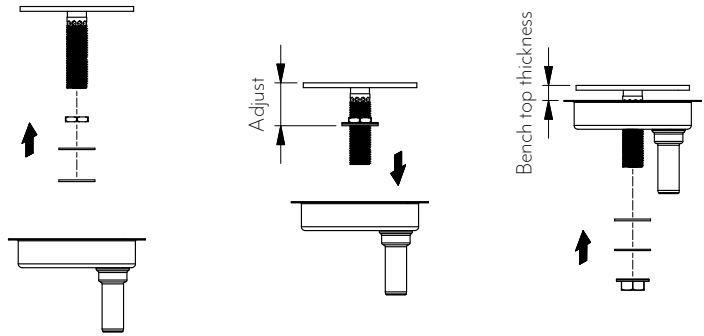
## INSTALLATION - FONT DRAIN - UNDERMOUNT

- 1 Assemble the waste outlet as shown below.

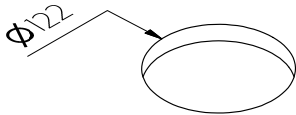


- 2 Measure the thickness of your bench top.

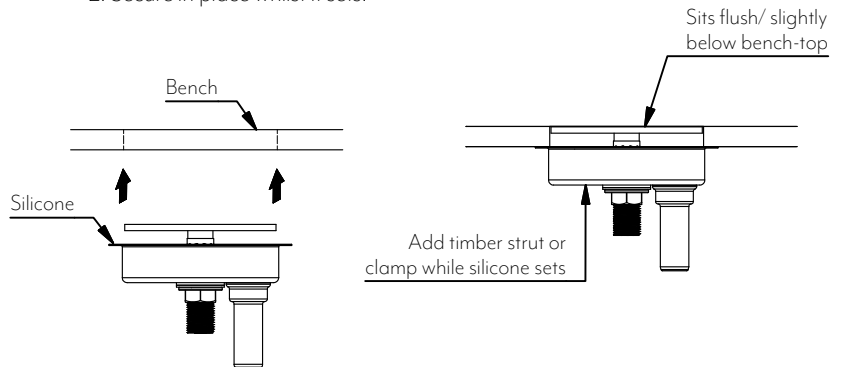
1. Attach the supplied nut, steel washer and rubber washer
2. Insert into the bowl as shown
3. Measure the offset and adjust to suit your bench thickness



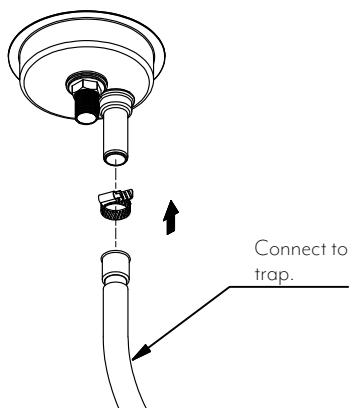
- 3 Ensure the pre-cut hole is 122mm in diameter.



- 4 1. Apply silicone to the top edge of the font drain and push to the underside of your bench  
2. Secure in place whilst it sets.



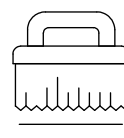
- 5 Connect the waste outlet to the nipple on your trap or another waste outlet point. Test and commission.



Regularly clean with mild liquid detergent or soap and water



DO NOT use cream cleaners or bleach. These substances are abrasive



DO NOT use cleaning pads with abrasive surfaces as this may scratch the material

# INSTALLATION GUIDE

**Note:** This product must be installed by a licensed plumber. This is a general installation guide - there are many factors involved that can alter the installation method. **AU/NZ:** For installations within Australia and New Zealand, this product must be installed in compliance with AS/NZS 3500. **UK:** For installations in the United Kingdom this product must be installed in compliance with the Water Supply (Water Fittings) Regulations and Water Supply (Water Fittings) (Scotland) Byelaws. **Other:** For installations outside these countries, this product must be installed in compliance with the standards in your respective country.



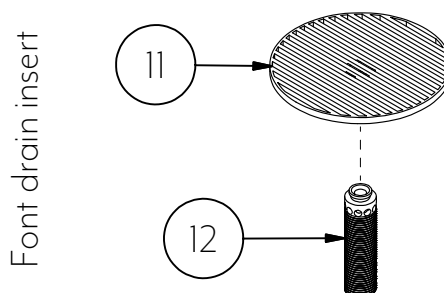
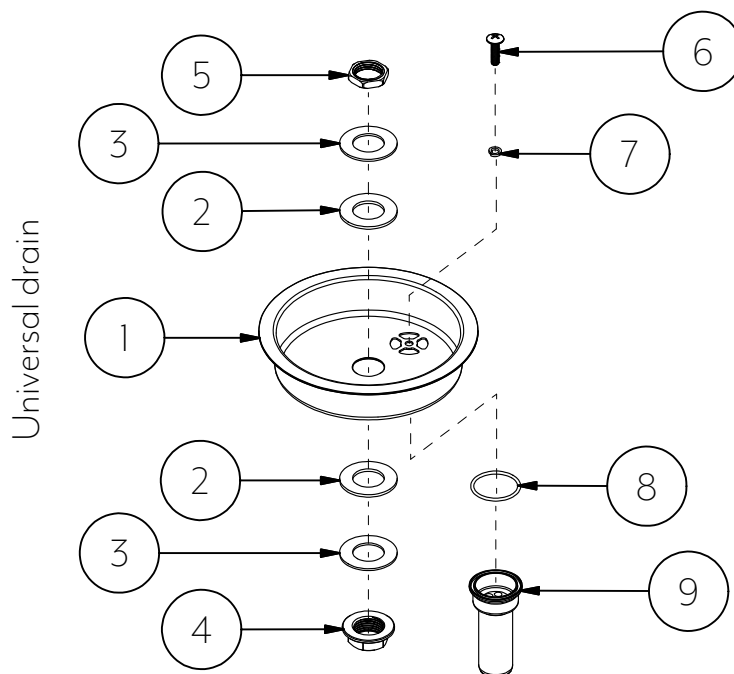
## In The Box

### Universal drain

1. Bowl
2. Rubber washer
3. Metal washer
4. BSP 1/2 Flat nut
5. BSP 1/2 Nut
6. M4 Bolt
7. Spring washer
8. O-ring
9. Waste receptacle
10. Font grate

### Font drain insert

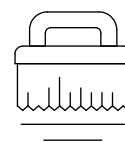
11. Font grate
12. Font stem



Regularly clean with mild liquid detergent or soap and water



DO NOT use cream cleaners or bleach. These substances are abrasive



DO NOT use cleaning pads with abrasive surfaces as this may scratch the material