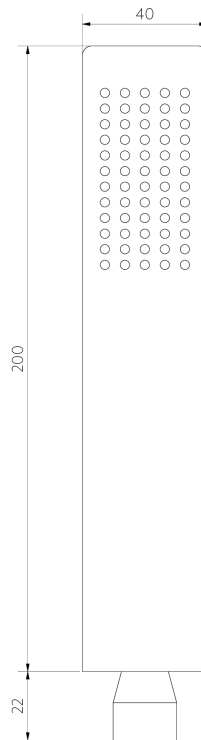
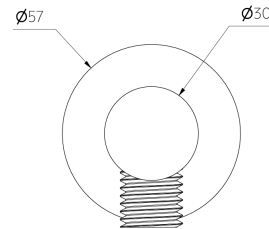


Shower Rail Side View



Hand Shower Front View



Round BP Front View

Note: Dimensions are nominal measurements only

SPECIFICATIONS

RECOMMENDED USE | WARRANTY

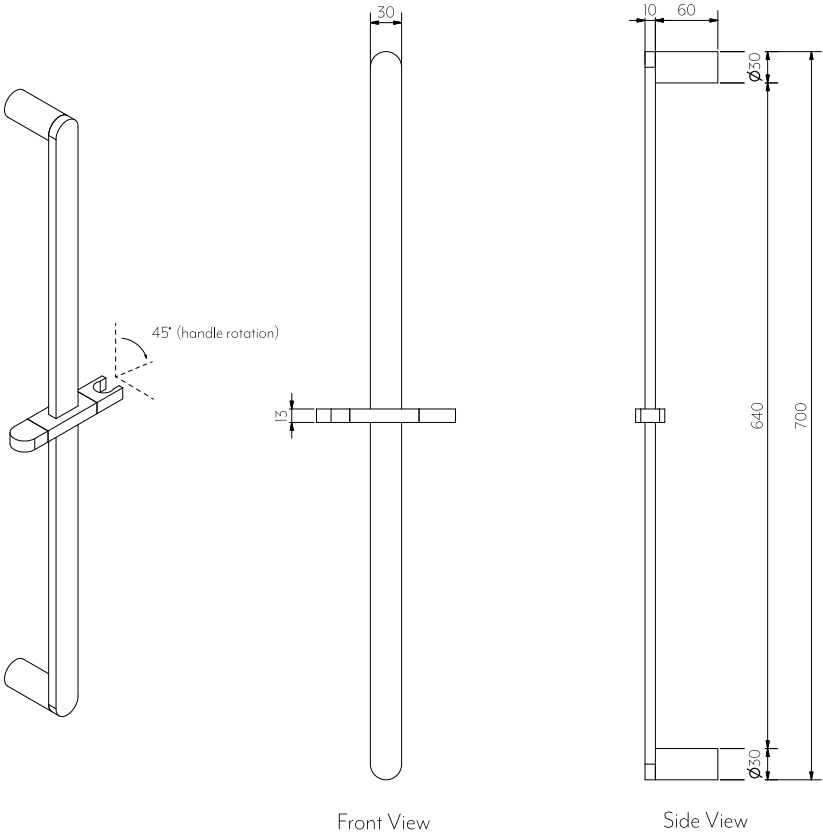
Domestic/Commercial | [Click here for warranty periods](#)

BOX

Box 1: milani Shower Rail
Box 2: Rounded Rectangular Hand Shower
Box 3: Round Shower BP
Box 4: Shower Hose

WELS

WELS 4 star, 7.5L/min, S45973



Note: Dimensions are nominal measurements only

SPECIFICATIONS

RECOMMENDED USE Domestic

MATERIAL Solid Brass

MOUNTING HARDWARE INCLUDED Yes

INSTALLATION GUIDE

This product must be installed by a licensed tradesperson.

This is a general installation guide - there are many factors that are involved that can alter the installation method. This product install must comply with the standards in your respective country and must be adhered to by your licensed tradesperson.



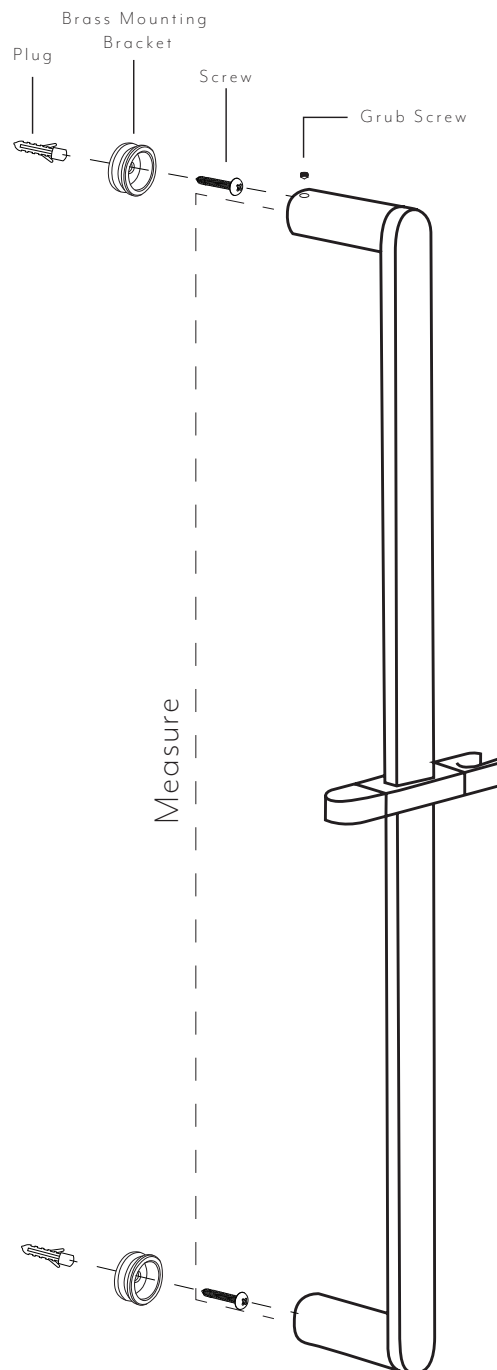
SUPPLIED

2x Plugs
2x Screws
1x Allen Key

INSTALLER TO SUPPLY

1x Rubber Mallet

- 1 Measure centre to centre, brass fixing holes in rail
- 2 Measure & mark desired position of the rail on the wall
- 3 Drill holes with masonry drill bit (not on hammer) & fit the plugs using a rubber mallet
- 4 Remove all brass mountings with the supplied allen key
- 5 Screw the brass mountings into the plugs
- 6 Fit shower rail onto the brass mountings to wall using the allen key



Regularly clean with mild liquid detergent or soap and water.

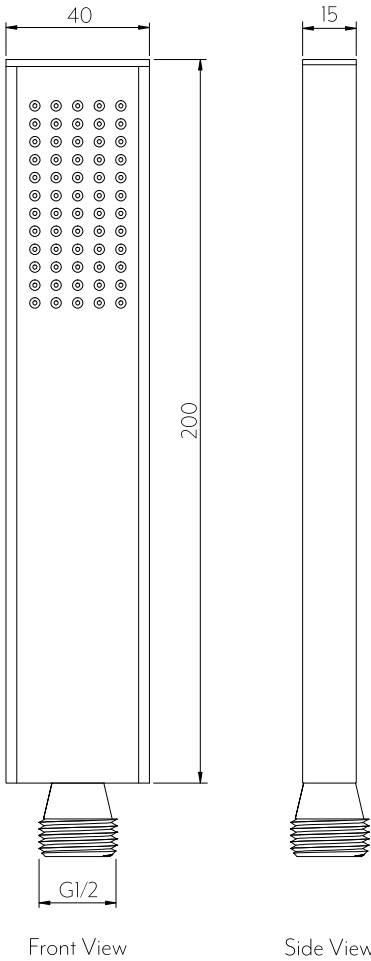


DO NOT use cream cleaners or bleach. These substances are abrasive.



DO NOT use cleaning pads with abrasive surfaces as this may scratch the material.

ROUNDED RECTANGLE HAND SHOWER



Note: Dimensions are nominal measurements only

SPECIFICATIONS

RECOMMENDED USE	Domestic
MATERIAL	Solid Brass
TEMPERATURE RATING	Maximum continuous working temperature 75°C If the water temperature exceeds 75°C,an approved tempering valve must be fitted
PRESSURE RATING	Recommended minimum working pressure 150kPa Recommended maximum working pressure 500kPa Hot and cold water inlet pressure should be equal
SUITABLE HOT WATER UNITS	Storage tank: Yes Continuous Flow: Yes Gravity Feed: Not suitable

STANDARDS	WELS 4 Star, 7L/min, S16475
-----------	-----------------------------

INSTALLATION GUIDE

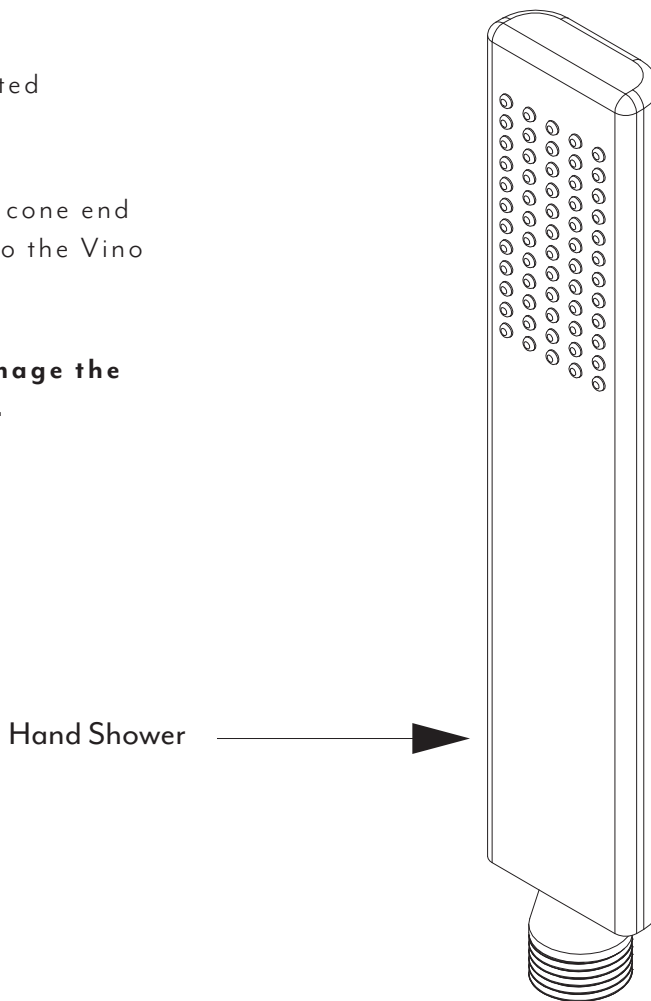
Note: This product must be installed by a licensed plumber. This is a general installation guide - there are many factors involved that can alter the installation method. **AU/NZ:** For installations within Australia and New Zealand, this product must be installed in compliance with AS/NZS 3500. **UK:** For installations in the United Kingdom this product must be installed in compliance with the Water Supply (Water Fittings) Regulations and Water Supply (Water Fittings) (Scotland) Byelaws. **Other:** For installations outside these countries, this product must be installed in compliance with the standards in your respective country.



STEP ONE: Ensure flat washer is fitted inside the hose end.

STEP TWO: Connect the swivelling cone end of hose in a clockwise direction onto the Vino Hand Shower and hand tighten

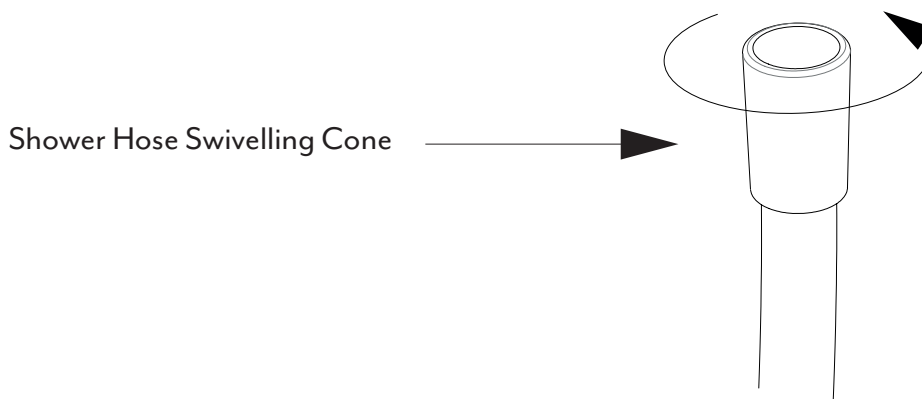
Note: Please take care not to damage the flow controller whilst connecting.



Hand Shower →



Flat Washer →



Shower Hose Swivelling Cone →



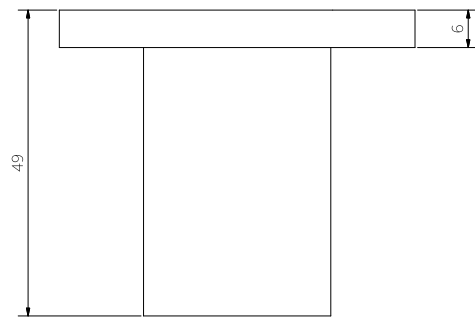
Regularly clean with mild liquid detergent or soap and water.



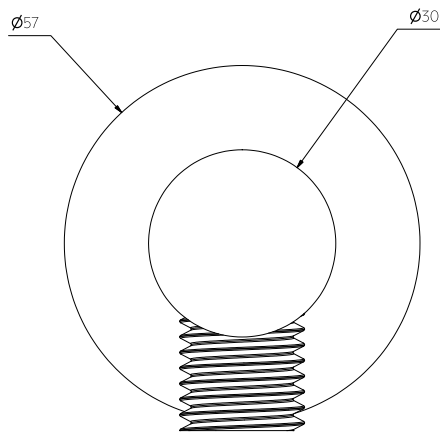
DO NOT use cream cleaners or bleach. These substances are abrasive.



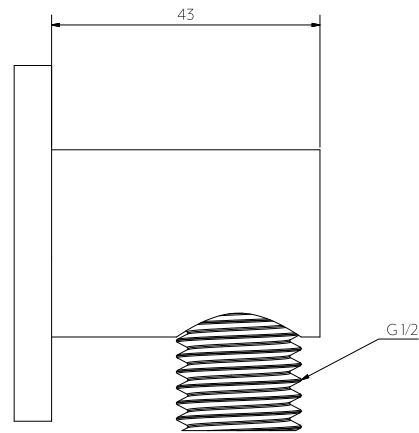
DO NOT use cleaning pads with abrasive surfaces as this may scratch the material.



Top View



Front View



Side View

Note: Dimensions are nominal measurements only

SPECIFICATIONS

RECOMMENDED USE

Domestic

MATERIAL

Solid Brass

TEMPERATURE RATING

Maximum continuous working temperature 75°C
If the water temperature exceeds 75°C, an approved tempering valve must be fitted

PRESSURE RATING

Recommended minimum working pressure 150kPa
Recommended maximum working pressure 500kPa
Hot and cold water inlet pressure should be equal

SUITABLE HOT WATER UNITS

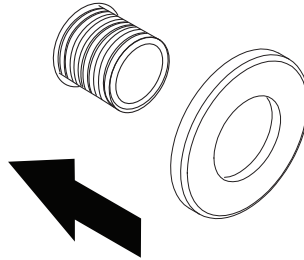
Storage tank: Yes
Continuous Flow: Yes
Gravity Feed: Not suitable

INSTALLATION GUIDE

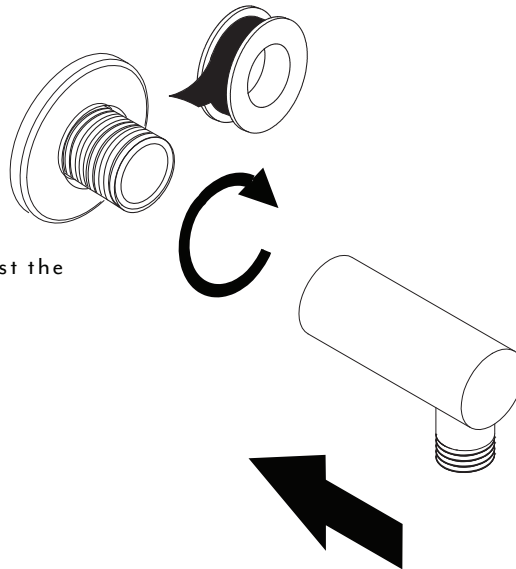
Note: This product must be installed by a licensed plumber. This is a general installation guide - there are many factors involved that can alter the installation method. **AU/NZ:** For installations within Australia and New Zealand, this product must be installed in compliance with AS/NZS 3500. **UK:** For installations in the United Kingdom this product must be installed in compliance with the Water Supply (Water Fittings) Regulations and Water Supply (Water Fittings) (Scotland) Byelaws. **Other:** For installations outside these countries, this product must be installed in compliance with the standards in your respective country.


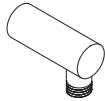


- 1 Slide backplate onto water outlet.



- 2 Apply the teflon tape to the brass outlet pipe. Twist the BP on and hand tighten.



WHAT'S IN THE BOX	
	
1x Backplate	1x BP Body



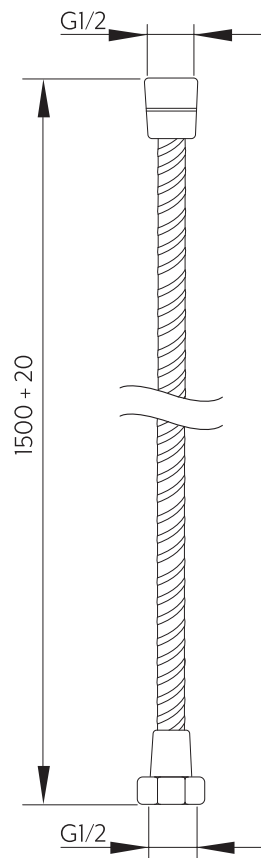
Regularly clean with mild liquid detergent or soap and water.



DO NOT use cream cleaners or bleach. These substances are abrasive.



DO NOT use cleaning pads with abrasive surfaces as this may scratch the material.



Note: Dimensions are nominal measurements only

SPECIFICATIONS

RECOMMENDED USE

Domestic

MATERIAL

Stainless Steel

TEMPERATURE RATING

Maximum continuous working temperature 75°C
If the water temperature exceeds 75°C, an approved tempering valve must be fitted

PRESSURE RATING

Recommended minimum working pressure 150kPa
Recommended maximum working pressure 500kPa
Hot and cold water inlet pressure should be equal