

**Note:** Dimensions are nominal measurements only

## SPECIFICATIONS

### MATERIAL

Solid Brass

### TEMPERATURE RATING

Maximum continuous working temperature 75°C  
If the water temperature exceeds 75°C, an approved tempering valve must be fitted

### PRESSURE RATING

Recommended minimum working pressure 150kPa  
Recommended maximum working pressure 500kPa  
Hot and cold water inlet pressure should be equal

### SUITABLE HOT WATER UNITS

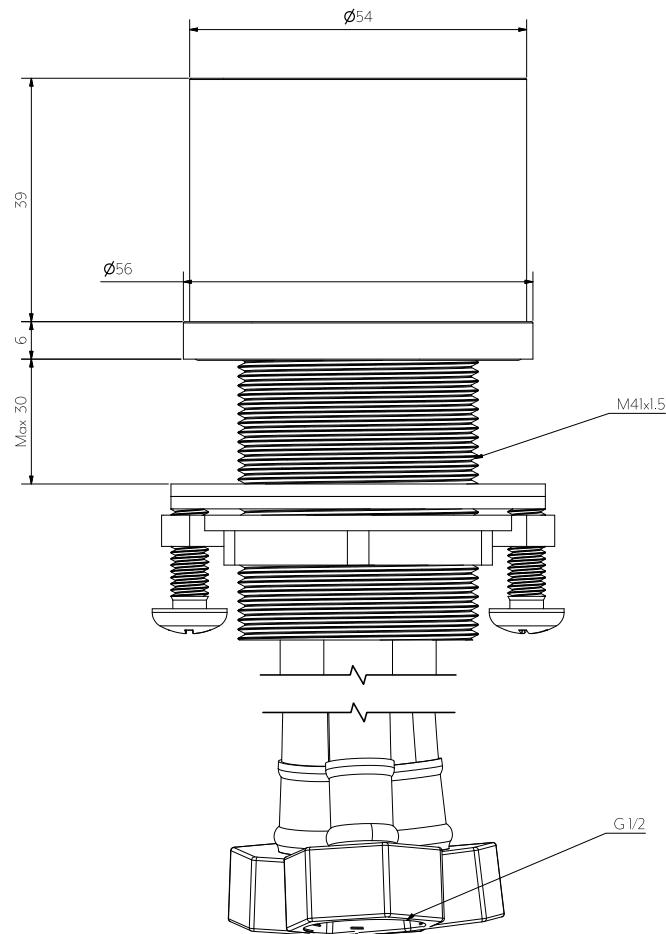
Storage tank: Yes  
Continuous Flow: Yes  
Gravity Feed: Not suitable

### STANDARDS

WELS 5 Star, 5.5L/min, T41254

### PACKAGING

Box 1 of 2 - Milani Hob Mixer  
Box 2 of 2 Gooseneck Spout



Front View

**Note:** Dimensions are nominal measurements only

## SPECIFICATIONS

### RECOMMENDED USE

Domestic

### MATERIAL

Solid Brass

### TEMPERATURE RATING

Maximum continuous working temperature 75°C  
If the water temperature exceeds 75°C, an approved tempering valve must be fitted

### PRESSURE RATING

Recommended minimum working pressure 150kPa  
Recommended maximum working pressure 500kPa  
Hot and cold water inlet pressure should be equal

### SUITABLE HOT WATER UNITS

Storage tank: Yes  
Continuous Flow: Yes  
Gravity Feed: Not suitable

### STANDARDS

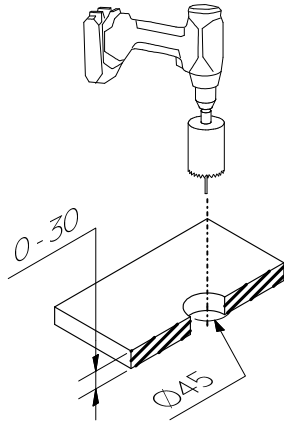
WELS Star Rating 5 Star - Flow Rate 5.5L/Min  
Registration No. T36893 (V), WM-022852 - AS/NZS 3718:2005

# INSTALLATION GUIDE

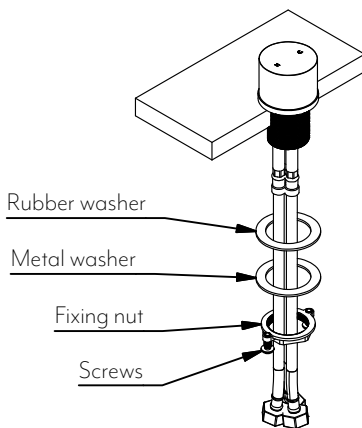
**Note:** This product must be installed by a licensed plumber. This is a general installation guide - there are many factors involved that can alter the installation method. **AU/NZ:** For installations within Australia and New Zealand, this product must be installed in compliance with AS/NZS 3500. **UK:** For installations in the United Kingdom this product must be installed in compliance with the Water Supply (Water Fittings) Regulations and Water Supply (Water Fittings) (Scotland) Byelaws. **Other:** For installations outside these countries, this product must be installed in compliance with the standards in your respective country.



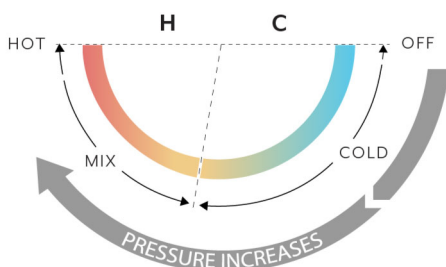
- ① Make a hole 45mm in diameter.  
**Note:** If cutting a stone benchtop it will need to be cut in a controlled environment by a licensed tradesperson as per OH&S regulations.



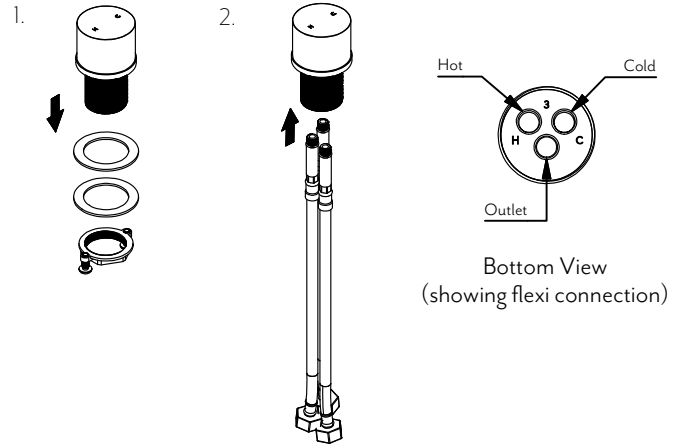
- ③ Push the flexi hoses through the hole. Fix to the bench by screwing the fixing nut and washers.



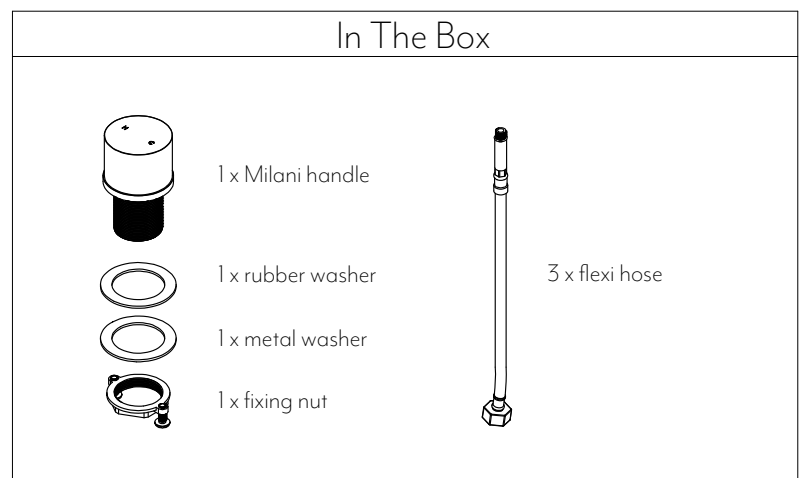
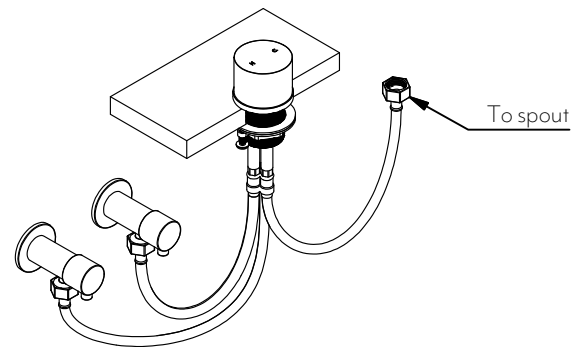
- ⑤ Mixer Operation



- ② 1. Remove the fixing nut and washers.  
2. Connect the flexi hoses (take note of red & blue mark)



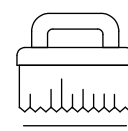
- ④ Attach the hot/cold flexi hoses to the corresponding hot/cold water supply.  
**Note:** Purge the lines with fresh water before connecting the flexi hoses to any spout.



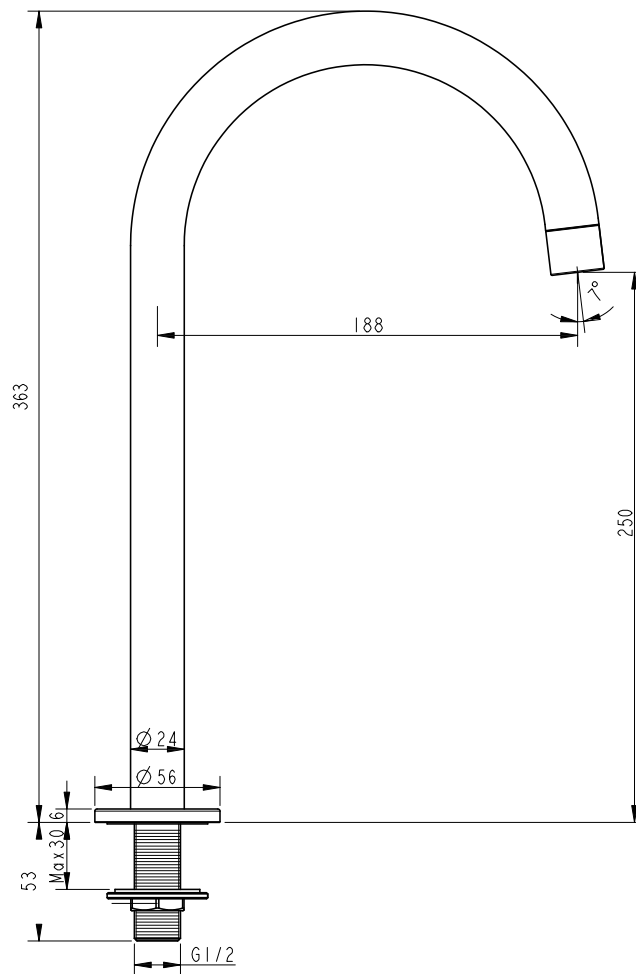
Regularly clean with mild liquid detergent or soap and water



DO NOT use cream cleaners or bleach. These substances are abrasive



DO NOT use cleaning pads with abrasive surfaces as this may scratch the material



**Note:** Dimensions are nominal measurements only

**Disclaimer \*** This product is designed to be used with wall mounted tapware

## SPECIFICATIONS

### RECOMMENDED USE

Domestic

### MATERIAL

Solid Brass

### TEMPERATURE RATING

Maximum continuous working temperature 75°C  
If the water temperature exceeds 75°C, an approved tempering valve must be fitted

### PRESSURE RATING

Recommended minimum working pressure 150kPa  
Recommended maximum working pressure 500kPa  
Hot and cold water inlet pressure should be equal

### SUITABLE HOT WATER UNITS

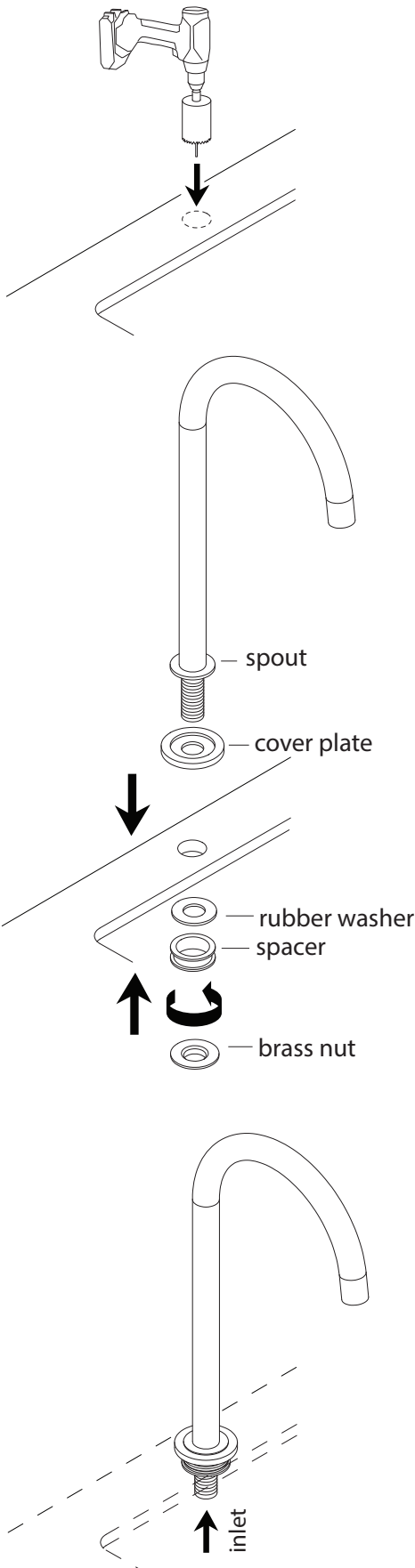
Storage tank: Yes  
Continuous Flow: Yes  
Gravity Feed: Not suitable

### STANDARDS

WELS 5 Star, 6L/min, T38391

# INSTALLATION GUIDE

Note: This product must be installed by a licensed plumber.  
This is a general installation guide - there are many factors that are involved that can alter the installation method. This product install must comply with AS/NZS 3500.



1

Mark out desired location of spout.

Cut hole using a **30 mm** hole saw.

**Note:** If cutting a stone benchtop it will need to be cut in a controlled environment by a licensed tradesperson as per OH&S regulations.

2

Fix spout to benchtop with brass nut ensuring cover plate is fitted above the bench and the rubber washer and spacer is fitted to underside of benchtop.

3

Connect pipework to inlet of spout.

IN THE BOX		1x cover plate
		1x spacer (if required)
		1x rubber washer
		1x brass nut
	1x spout	



Regularly clean with mild liquid detergent or soap and water



DO NOT use cream cleaners or bleach  
These substances are abrasive



DO NOT use cleaning pads with abrasive surfaces as this may scratch the material