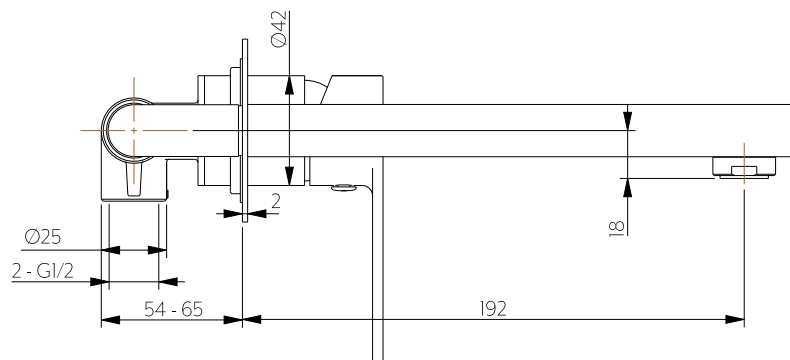


Front View



Side View

Note: Dimensions are nominal measurements only

SPECIFICATIONS

RECOMMENDED USE

Domestic

MATERIAL

DR Brass
Ceramic Cartridge

TEMPERATURE RATING

Maximum continuous working temperature 75°C
If the water temperature exceeds 75°C, an approved tempering valve must be fitted

PRESSURE RATING

Recommended minimum working pressure 150kPa
Recommended maximum working pressure 500kPa
Hot and cold water inlet pressure should be equal

SUITABLE HOT WATER UNITS

Storage tank: Yes
Continuous Flow: Yes
Gravity Feed: Not suitable

STANDARDS

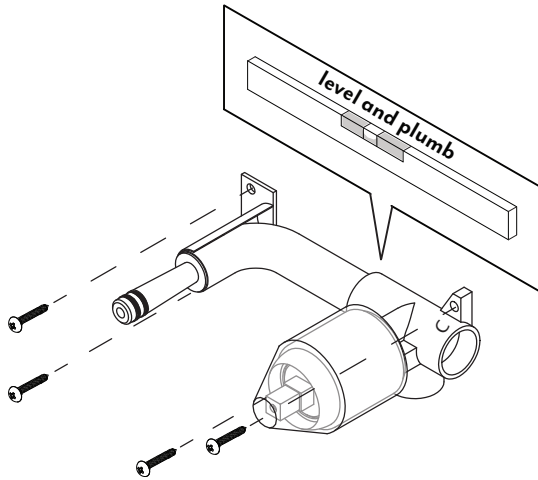
WELS 5 Star, 5.5L/min, T32437

INSTALLATION GUIDE

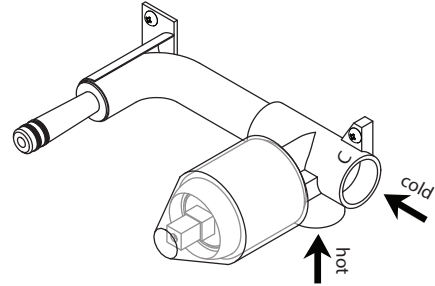
This product must be installed by a licensed plumber.
This is a general installation guide - there are many factors that are involved that can alter the installation method.
This product install must comply with AS/NZS 3500.



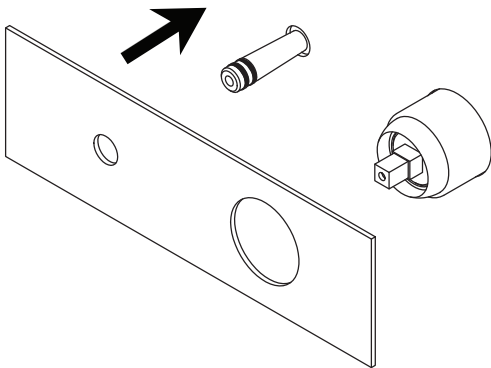
- 1 Fasten screws to secure mixer assembly into position.
Note: Ensure mixer assembly is level and plumb.



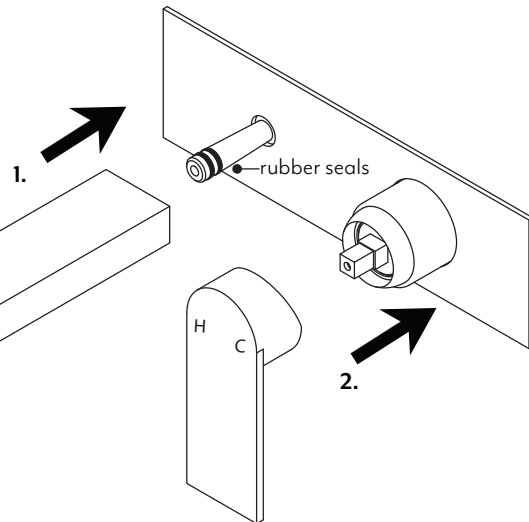
- 2 Connect to water supply & test for leaks.



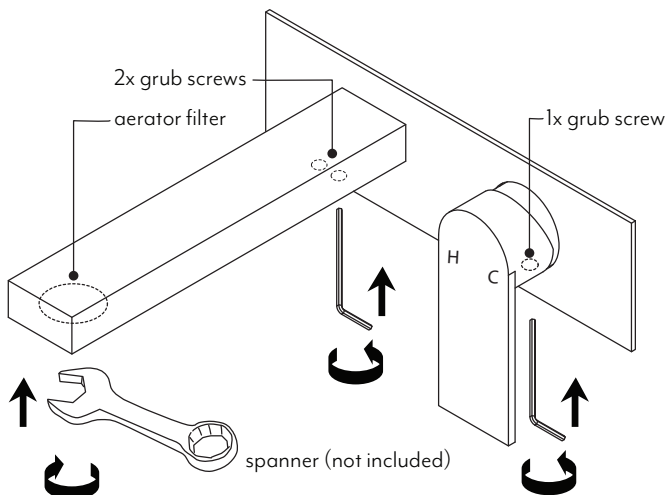
- 3 Create a 45mm and 15mm hole in cement sheet & tiles.
Note: Use backplate as a guide for centre of hole locations.
Remove protective cover & mount the backplate into position.



- 4 1. Fit spout to outlet ensuring spout firmly connects with outlet rubber seals.
2. Mount mixer handle to mixer.



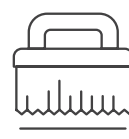
- 5 Fix handle & spout by removing grub screw cap and tighten grub screw with allen key provided, ensure grub screw caps are refitted.
For maintenance purposes gently use a spanner to unscrew & refit spout aerator filter.



Regularly clean with mild liquid detergent or soap and water.



DO NOT use cream cleaners or bleach. These substances are abrasive.



DO NOT use cleaning pads with abrasive surfaces as this may scratch the material.

