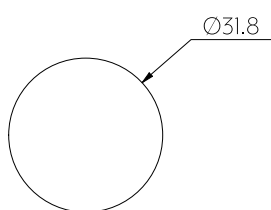
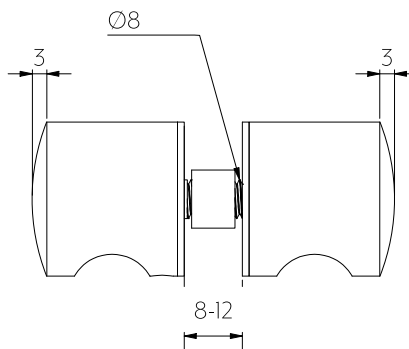


Top View



Front View



Side View

Note: Dimensions are nominal measurements only

SPECIFICATIONS

RECOMMENDED USE

Domestic/Commercial

MATERIAL

304 Stainless Steel

INSTALLATION

12mm hole required

GLASS THICKNESS

8-12mm

INSTALLATION GUIDE

Note: This product must be installed by a licensed tradesperson.

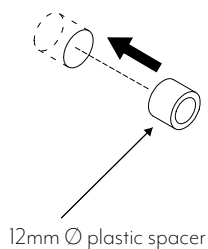
This is a general installation guide - there are many factors that are involved that can alter the installation method.

This product install must comply with the standards in your respective country and must be adhered to by your licensed tradesperson.



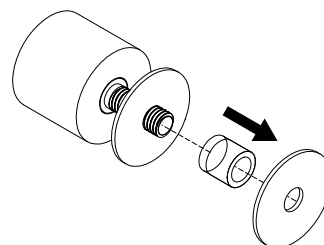
1

Drill 12mm diameter hole in desired position of shower screen and insert nylon spacer into drilled hole.



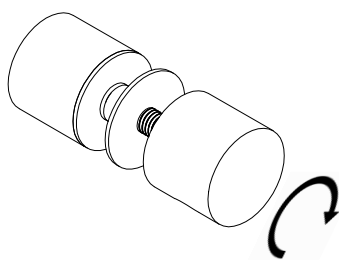
2

Insert threaded bolt of rear handle through glass panel with a nylon washer on each side.



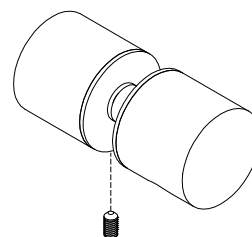
3

Attach the front handle by screwing onto threaded bolt from front side of glass. Tighten by hand until secure.



4

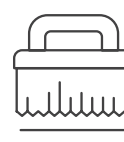
If required, alignment of rear and front handle can be achieved by loosening grub screw in rear handle and adjusting rotation.



Regularly clean with mild liquid detergent or soap and water.



DO NOT use cream cleaners or bleach. These substances are abrasive.



DO NOT use cleaning pads with abrasive surfaces as this may scratch the material.