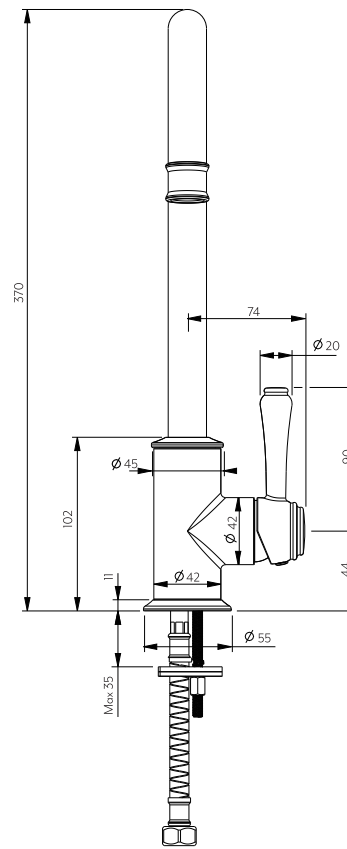


Side View



Front View

Note: Dimensions are nominal measurements only

SPECIFICATIONS

RECOMMENDED USE

Domestic/Commercial

MATERIAL

Solid Brass

TEMPERATURE RATING

Maximum continuous working temperature 75°C
If the water temperature exceeds 75°C, an approved tempering valve must be fitted

PRESSURE RATING

Recommended minimum working pressure 150kPa
Recommended maximum working pressure 500kPa
Hot and cold water inlet pressure should be equal

SUITABLE HOT WATER UNITS

Storage tank: Yes
Continuous Flow: Yes
Gravity Feed: Not suitable

STANDARDS

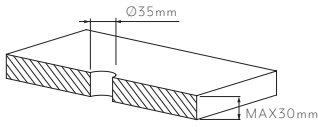
WELS 5 Star, 6L/min, T40049

INSTALLATION GUIDE

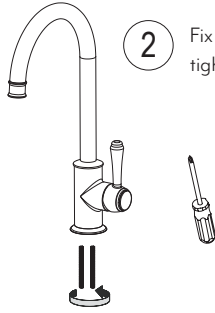


Note: This product must be installed by a licensed plumber. This is a general installation guide - there are many factors involved that can alter the installation method. **AU/NZ:** For installations within Australia and New Zealand, this product must be installed in compliance with AS/NZS 3500. **UK:** For installations in the United Kingdom this product must be installed in compliance with the Water Supply (Water Fittings) Regulations and Water Supply (Water Fittings) (Scotland) Byelaws. **Other:** For installations outside these countries, this product must be installed in compliance with the standards in your respective country.

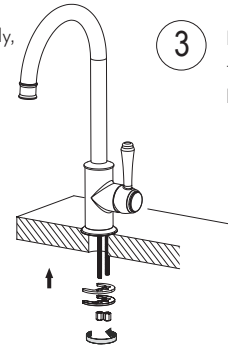
- 1 The hole dimension as 35mm.



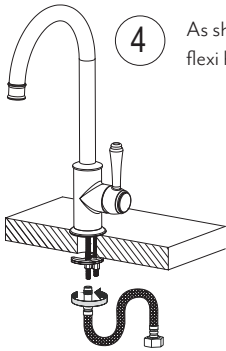
- 2 Fix the bolts to the bottom of the body, tighten it with a screwdriver.



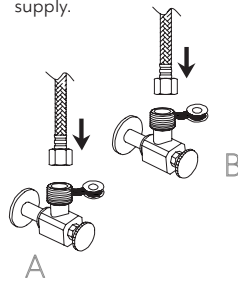
- 3 Put the faucet into the hole. Pass the horseshoe plates through the bolts, fasten the nuts and tighten.



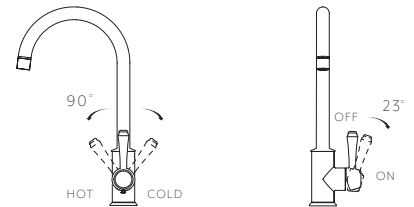
- 4 As shown in the figure, connect the flexi hoses.



- 5 Attach the two flexible hoses to water supply.



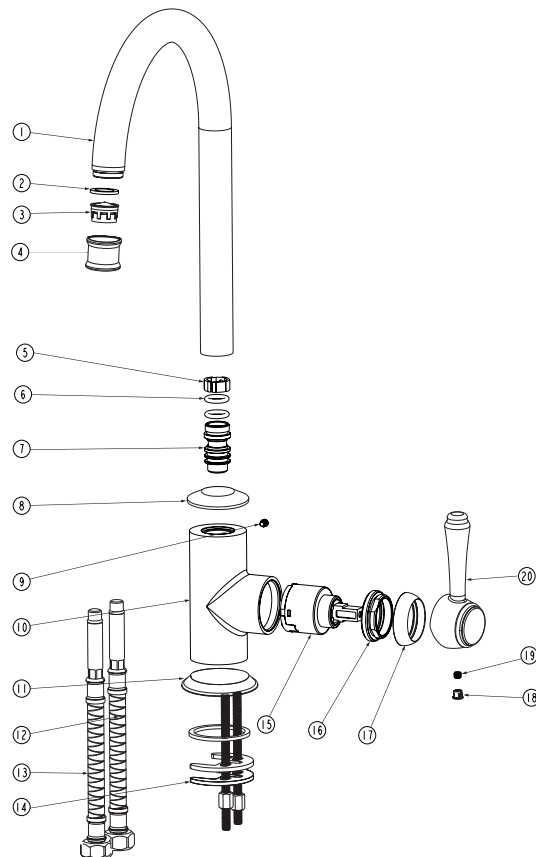
Operation



EXPLODED VIEW

Item Description Code

- 1 Spout
- 2 Rubber O-Ring
- 3 Aerator
- 4 Spout tip
- 5-7 Outlet & Connections
- 8 Dress Ring
- 9 Grub Screw
- 10 Body
- 11 Dress Ring
- 12-13 Flexible Hoses
- 14 Horse Shoe Plate
- 15 Cartridge
- 16 Locking Nut
- 17 Dome
- 18 Cap
- 19 Grub Screw
- 20 Handle



Regularly clean with mild liquid detergent or soap and water.



DO NOT use cream cleaners or bleach. These substances are abrasive.



DO NOT use cleaning pads with abrasive surfaces as this may scratch the material.