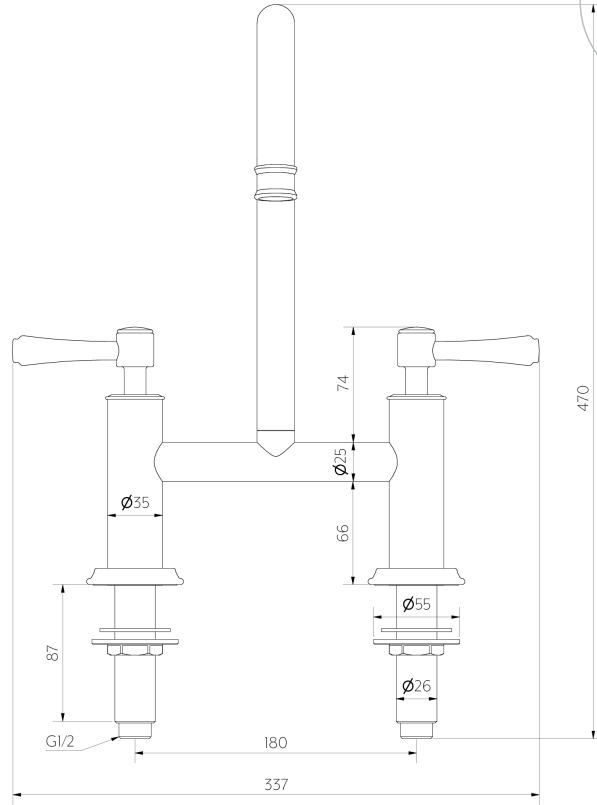


Side View



Front View



Note: Dimensions are nominal measurements only

SPECIFICATIONS

RECOMMENDED USE | WARRANTY

Domestic/Commercial | [Click here for warranty periods](#)

MATERIAL

Solid Brass

TEMPERATURE RATING

Maximum continuous working temperature 75°C
If the water temperature exceeds 75°C, an approved tempering valve must be fitted

PRESSURE RATING

Recommended minimum working pressure 150kPa
Recommended maximum working pressure 500kPa
Hot and cold water inlet pressure should be equal

SUITABLE HOT WATER UNITS

Storage tank: Yes
Continuous flow: Yes
Gravity fed: Suitable

WELS

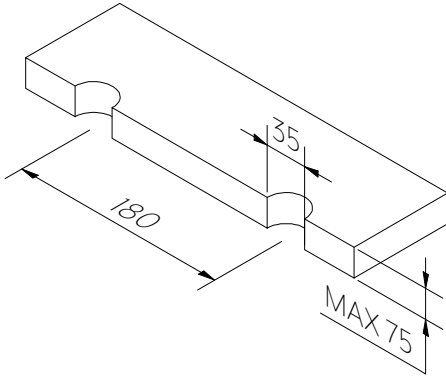
WELS 5 star, 6L/min, T47939

INSTALLATION GUIDE

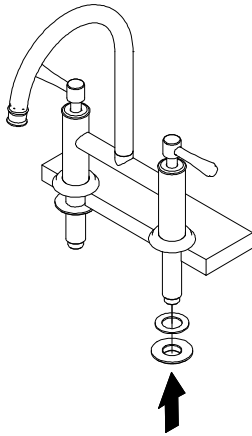
Note: This product must be installed by a licensed plumber. This is a general installation guide - there are many factors involved that can alter the installation method. **AU/NZ:** For installations within Australia and New Zealand, this product must be installed in compliance with AS/NZS 3500. **UK:** For installations in the United Kingdom this product must be installed in compliance with the Water Supply (Water Fittings) Regulations and Water Supply (Water Fittings) (Scotland) Byelaws. **Other:** For installations outside these countries, this product must be installed in compliance with the standards in your respective country.



- ① Mark holes 180mm apart in bench top at desired position and drill 2x 35mm holes.

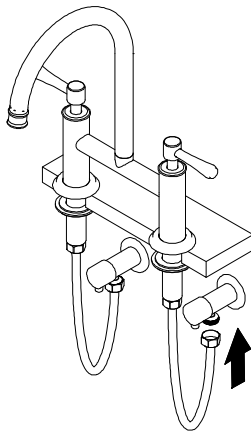


- ③ Fix washer and tighten fixing bracket to secure bridge mixer.

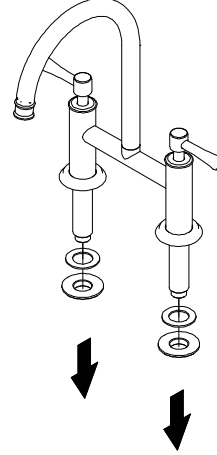


- ⑤ Connect flexi hoses to water supply. Test and commission.

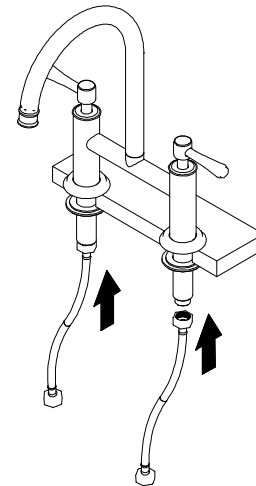
Note: Tighten aerator so that it cannot be removed by hand.



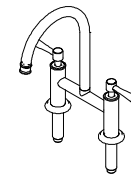
- ② Remove fixing brackets and washers and insert bridge mixer into drilled holes.



- ④ Ensuring rubbers are in place before screwing flexi hoses into the the bridge mixer.



IN THE BOX



1x Kitchen Bridge Mixer



2x Flexi hoses



2x Rubber washers



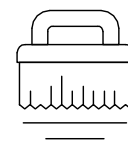
2x Fixing brackets



Regularly clean with mild liquid detergent or soap and water



DO NOT use cream cleaners or bleach. These substances are abrasive



DO NOT use cleaning pads with abrasive surfaces as this may scratch the material