

Top View

Note: Dimensions are nominal measurements only

SPECIFICATIONS

RECOMMENDED USE

Domestic

MATERIAL

Solid Brass

MOUNTING HARDWARE INCLUDED

Yes, 2x 25mm screw, 2 x wall plug

INSTALLATION GUIDE

Note: This product must be installed by a licensed plumber.
This is a general installation guide - there are many factors that are involved that can alter the installation method.
This product install must comply with AS/NZS 3500.



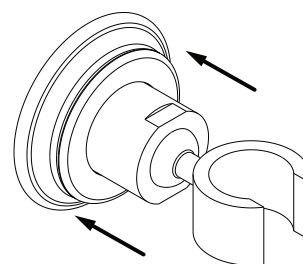
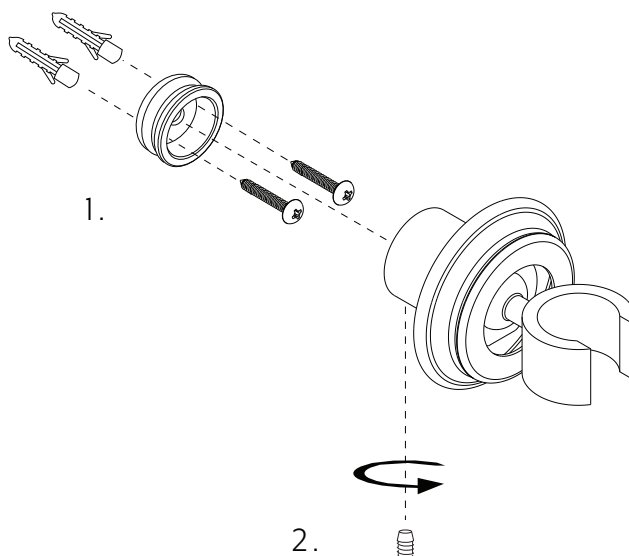
1 Fix the wall bracket to the wall

1.

2 Fit the hand shower holder and fasten grub screw

2.

3 Push back plate onto wall



IN THE BOX



Wall plug [x2]



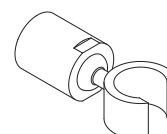
Screw [x2]



Wall bracket



Back Plate



Holder



Regularly clean with mild liquid detergent or soap and water.



DO NOT use cream cleaners or bleach. These substances are abrasive.



DO NOT use cleaning pads with abrasive surfaces as this may scratch the material.