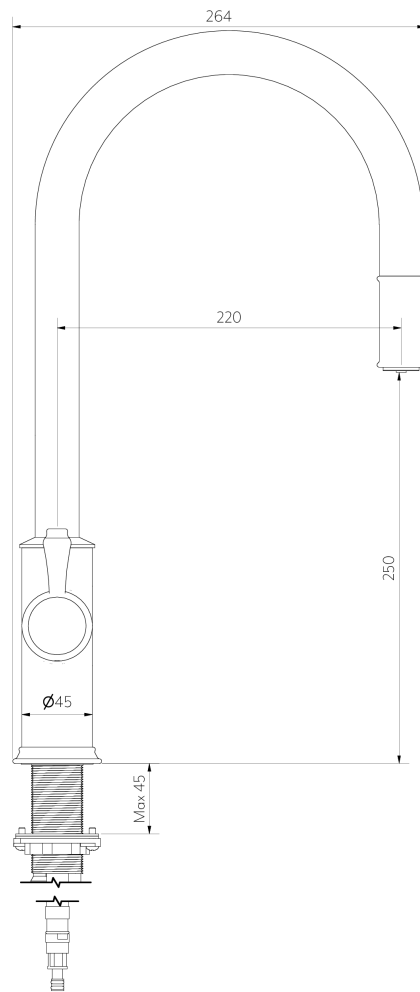
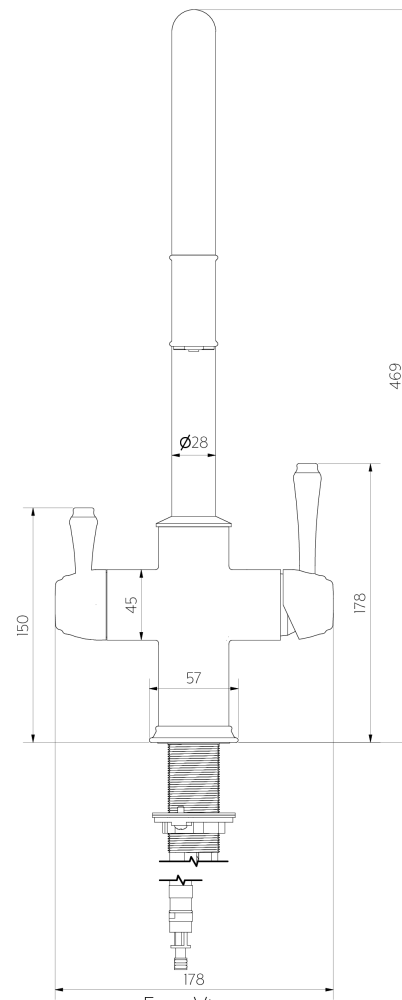


KINGSLEY 3-WAY PULL-OUT FILTER TAP



Side View

Note: Dimensions are nominal measurements only



Front View



SPECIFICATIONS

RECOMMENDED USE | WARRANTY

Domestic / Commercial | [Click here for warranty periods](#)

MATERIAL

Stainless Steel 304

TEMPERATURE RATING

Maximum continuous working temperature 75°C
If the water temperature exceeds 75°C, an approved tempering valve must be fitted

PRESSURE RATING

Recommended minimum working pressure 150kPa
Recommended maximum working pressure 500kPa
Hot and cold water inlet pressure should be equal

SUITABLE HOT WATER UNITS

Storage tank: Yes
Continuous flow: Yes
Gravity fed: Not suitable

STANDARDS

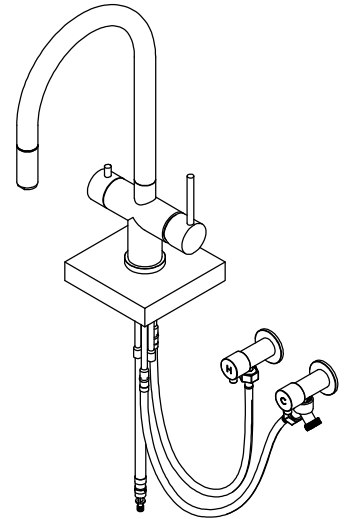
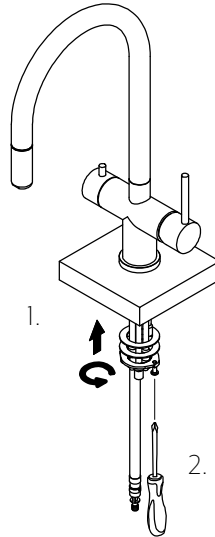
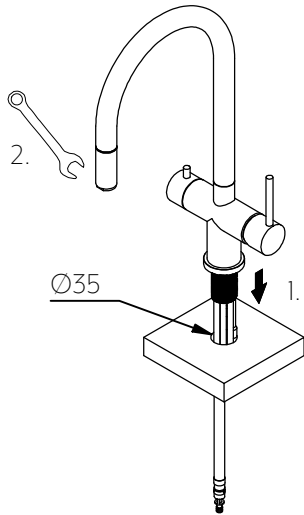
WELS 5 star, 6.0L/min, T46004

INSTALLATION GUIDE

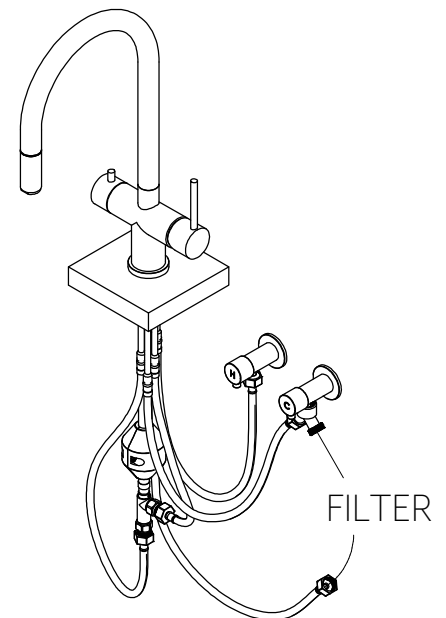
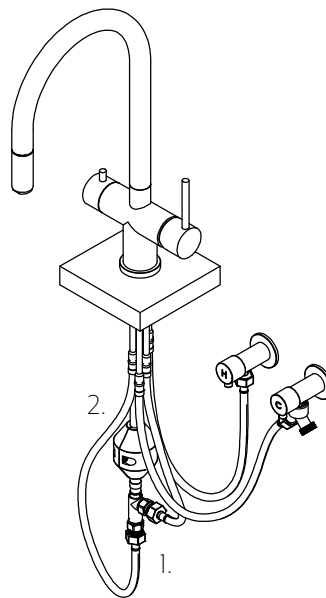
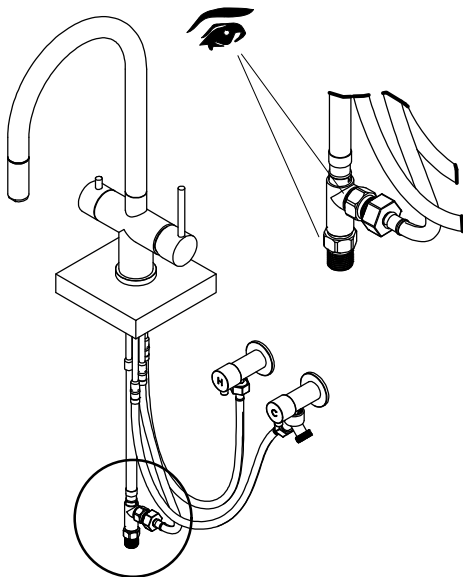
Note: This product must be installed by a licensed plumber. This is a general installation guide - there are many factors involved that can alter the installation method. **AU/NZ:** For installations within Australia and New Zealand, this product must be installed in compliance with AS/NZS 3500. **UK:** For installations in the United Kingdom this product must be installed in compliance with the Water Supply (Water Fittings) Regulations and Water Supply (Water Fittings) (Scotland) Byelaws. **Other:** For installations outside these countries, this product must be installed in compliance with the standards in your respective country.

ABI
INTERIORS

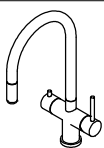
- ① 1. Remove locking nut and washers feed hose connections and pull-out hose through benchtop cutout.
2. Tighten aerator with spanner so that it cannot be removed by hand.
- ② 1. Replace washers and locking nut, ensuring the rubber washer goes on first. Hand tighten locking nut.
2. Use screw driver to tighten the two bolts until the mixer is secure in place.
- ③ Use flexi hoses to connect hose connections labeled 'Hot' and 'Cold' to their respective outlets.
Add a T connection to the cold water outlet for the filter line.



- ④ Install the T connector to the pull-out hose and connect the mixed water line to one side. Ensure non-return valves are installed on the T connector.
- ⑤ 1. Connect the other side of the T connector to the connection marked 'filter out'.
2. Attach weight to pull-out hose. Ensure weight is not obstructed when pull-out is extended.
- ⑥ Connect your choice of filter unit between the cold water outlet and the connection marked 'filter-in'.
Test and commission.



What's in the Box



Kitchen Mixer x 1



Flexi Hose x 5



T Connector x 1



Non Return Valve x 2



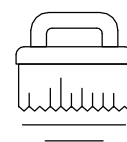
Weight x 1



Regularly clean with mild liquid detergent or soap and water



DO NOT use cream cleaners or bleach. These substances are abrasive



DO NOT use cleaning pads with abrasive surfaces as this may scratch the material