

Note: Dimensions are nominal measurements only

SPECIFICATIONS

RECOMMENDED USE Domestic/Commercial

MATERIAL 304 Stainless Steel

INSTALLATION 14mm Hole (Timber/Concrete/Blockwork)

GLASS THICKNESS 12mm

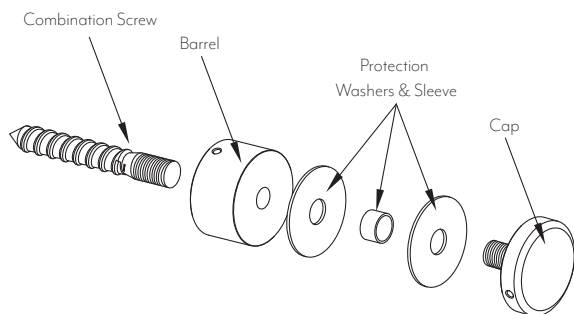
WEIGHT CAPACITY 7kg

INSTALLATION GUIDE

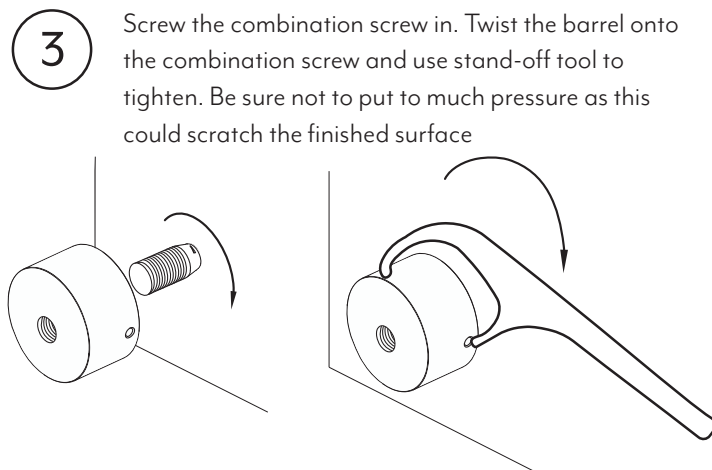
Note: This product must be installed by a licensed tradesperson. This is a general installation guide - there are many factors that are involved that can alter the installation method. This product install must comply with the standards in your respective country and must be adhered to by your licensed tradesperson.



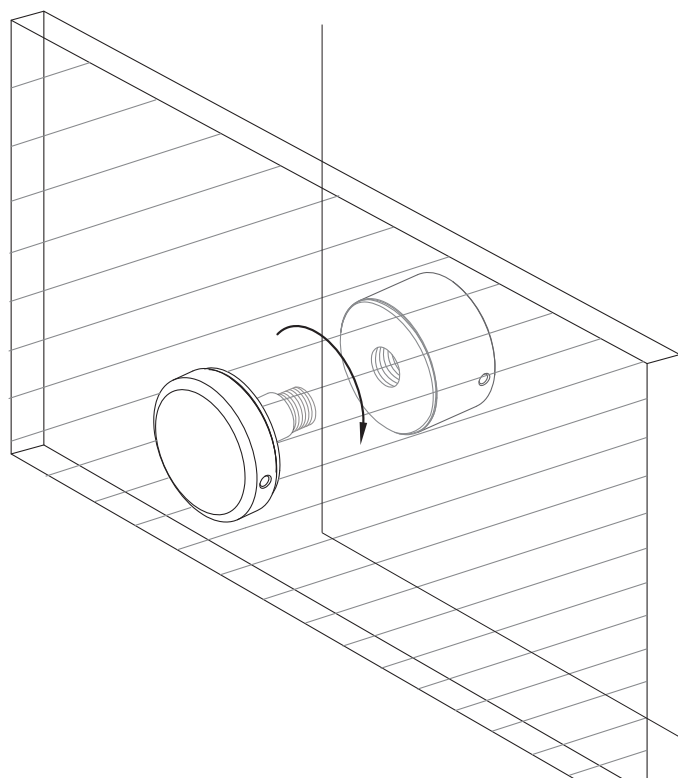
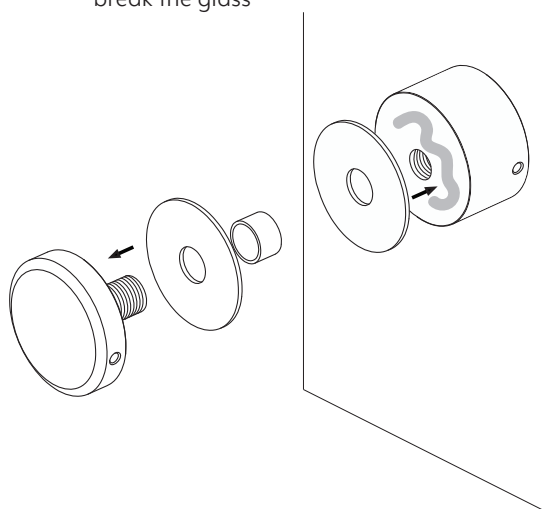
- 1 Disassemble stand-off by removing cap, plastic washers and unscrewing the large combination screw from the barrel



- 2 Measure and mark out desired position for stand-offs. Pre drill holes into surface and apply plugs if mounting to blockwork or concrete.
Note: Glass requires pre drilled holes to install



- 4 Use a temporary adhesive to stick one plastic washer to the barrel. Hold glass in place using special grips and screw the cap (with plastic washer and screw sleeve) through the glass and into the barrel. Tighten using standoff tool to clamp glass.
Do not over tighten as this could potentially break the glass



Regularly clean with mild liquid detergent or soap and water.



DO NOT use cream cleaners or bleach. These substances are abrasive.



DO NOT use cleaning pads with abrasive surfaces as this may scratch the material.