

**Note:** Dimensions are nominal measurements only

## SPECIFICATIONS

### RECOMMENDED USE

Domestic

### MATERIAL

Ash Wood

### MOUNTING HARDWARE INCLUDED

Yes 4x M4 25mm Fixing Screw

### MOUNTS FROM

Front & Back

### FIXING DISTANCE

32mm (diagonal centre to centre)

# INSTALLATION GUIDE

Note: This product must be installed by a licensed tradesperson.

This is a general installation guide - there are many factors that are involved that can alter the installation method.

This product install must comply with the standards in your respective country and must be adhered to by your licensed tradesperson.

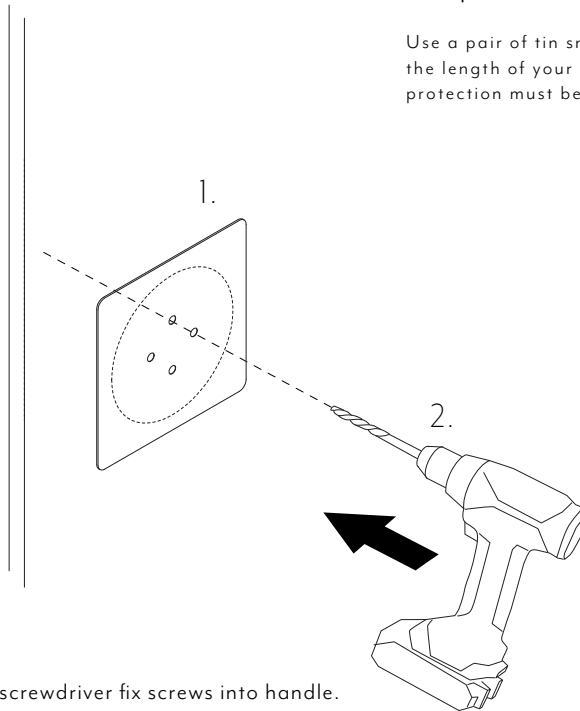


1

1. Using the template provided mark out the desired position for handle on both sides of door/drawer panel.

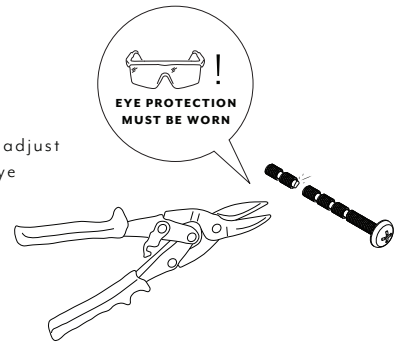
2. Drill prescribed holes through door/drawer panel for handle fixings.

**Note:** Gauge drill bit using hole sizes in template.



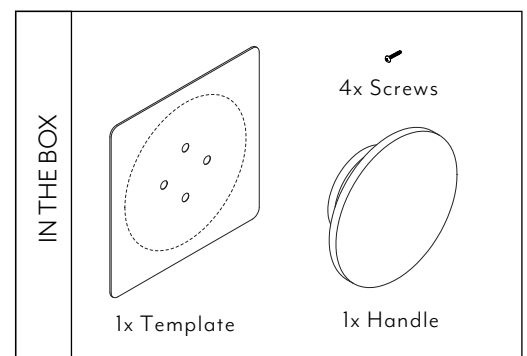
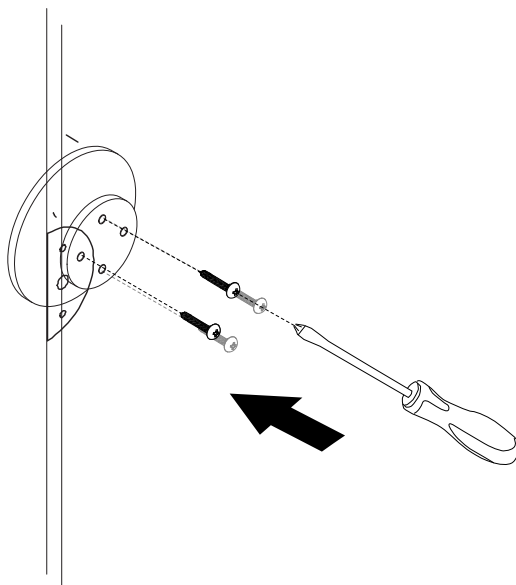
## Snap Off Bolts

Use a pair of tin snips or pliers to adjust the length of your bolt/s. **Note:** Eye protection must be worn!



2

Using a Phillips head screwdriver fix screws into handle.



Regularly clean with mild liquid detergent or soap and water.



DO NOT use cream cleaners or bleach. These substances are abrasive.



DO NOT use cleaning pads with abrasive surfaces as this may scratch the material.