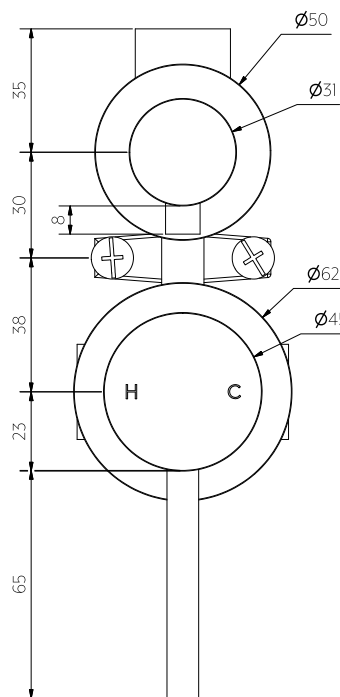


Side View



Front View

**Note:** Dimensions are nominal measurements only

## SPECIFICATIONS

### RECOMMENDED USE

Domestic

### MATERIAL

Solid Brass

### TEMPERATURE RATING

Maximum continuous working temperature 75°C  
If the water temperature exceeds 75°C, an approved tempering valve must be fitted

### PRESSURE RATING

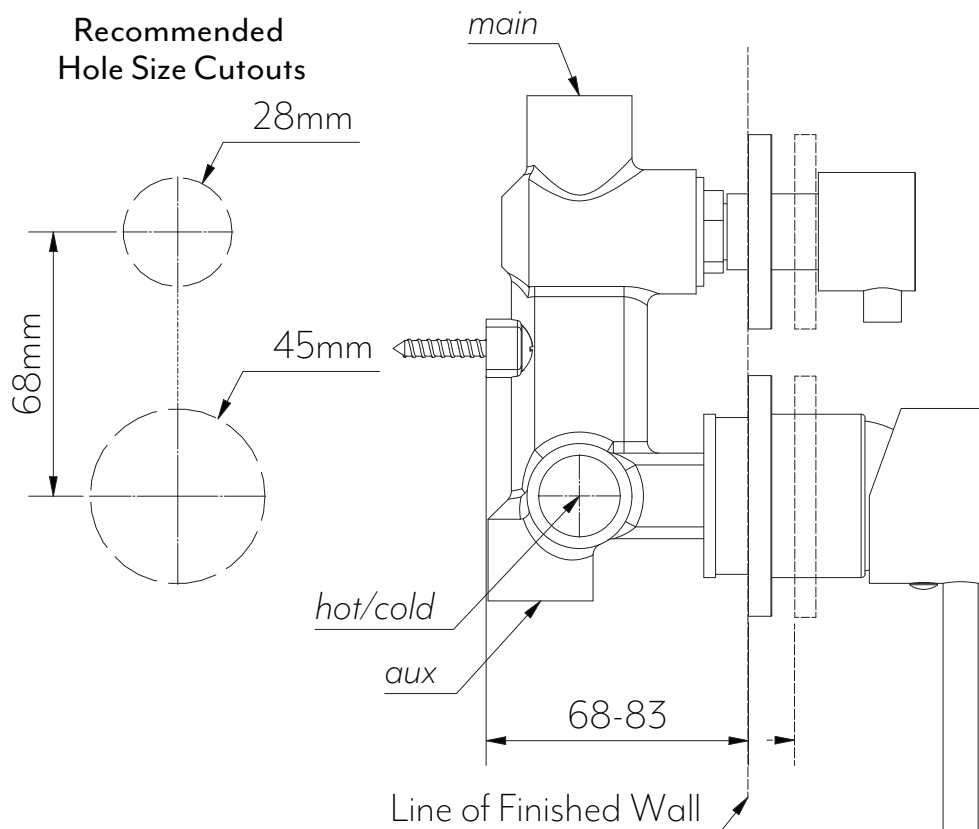
Recommended minimum working pressure 150kPa  
Recommended maximum working pressure 500kPa  
Hot and cold water inlet pressure should be equal

### SUITABLE HOT WATER UNITS

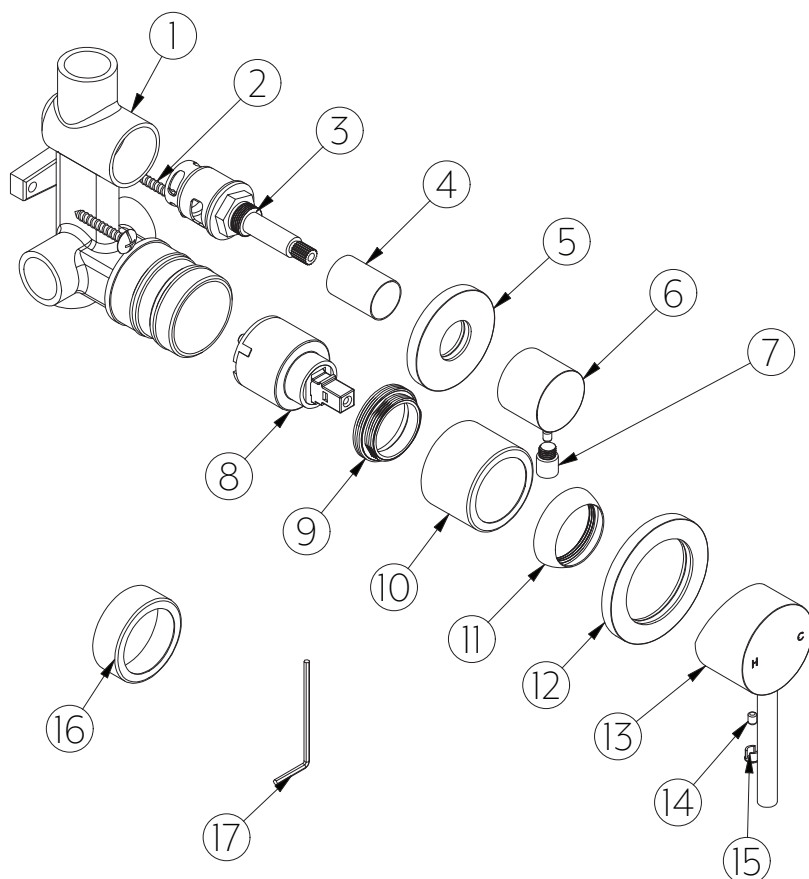
Storage tank: Yes  
Continuous Flow: Yes  
Gravity Feed: Not suitable

# INSTALLATION GUIDE

Note: This product must be installed by a licensed plumber.  
This is a general installation guide - there are many factors that are involved that can alter the installation method.  
This product install must comply with AS/NZS 3500.



- ① Screw Diverter Body into wall structure with provided screws.
- ② Connect *hot* and *cold* to left and right outlets respectively.
- ③ Connect *main* and *aux* outlets to Rain Shower and Hand Shower. Or alternative shower outlets. Test with pressure.
- ④ Once finish wall is installed use silicone to ensure all entry points around mixer are sealed to prevent water entry.
- ⑤ Install Long or Short Mixer Sleeve depending on wall finish line.
- ⑥ Apply back plates, and install handles by tightening grub screws.



## EXPLODED VIEW

1. Diverter Body
2. Screws
3. Diverter Cartridge
4. Diverter Sleeve
5. Diverter Back Plate
6. Diverter Button
7. Diverter Stick
8. Mixer Cartridge
9. Locking Nut
10. Mixer Sleeve Long
11. Dome
12. Mixer Back Plate
13. Mixer Handle
14. Grub Screw
15. Grub Screw Cap
16. Mixer Sleeve Short
17. Allen Key



Regularly clean with mild liquid detergent or soap and water



DO NOT use cream cleaners or bleach. These substances are abrasive



DO NOT use cleaning pads with abrasive surfaces as this may scratch the material