

SIDE VIEW

Note: Top or bottom diverter compatible

Note: Dimensions are nominal measurements only

SPECIFICATIONS

RECOMMENDED USE	Domestic
MATERIAL	Solid Brass
TEMPERATURE RATING	Maximum continuous working temperature 75°C If the water temperature exceeds 75°C,an approved tempering valve must be fitted
PRESSURE RATING	Recommended minimum working pressure 150kPa Recommended maximum working pressure 500kPa Hot and cold water inlet pressure should be equal
SUITABLE HOT WATER UNITS	Storage tank: Yes Continuous Flow: Yes Gravity Feed: Not suitable
STANDARDS	Overhead Shower: WELS 3 star, 8.5L/min, Hand Shower: WELS 4 star, 6.5L/min, S16411

BOTTOM DIVERTER INSTALLATION

The hand held has more range to move when the diverter is installed at the bottom of the rail, compared to installation at the top.

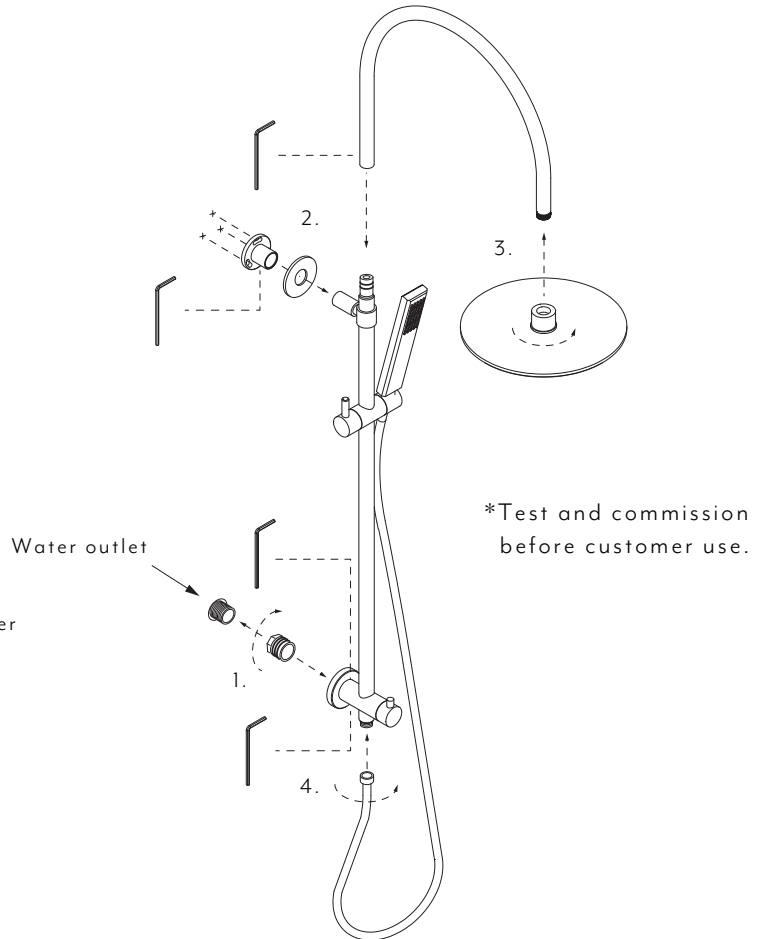
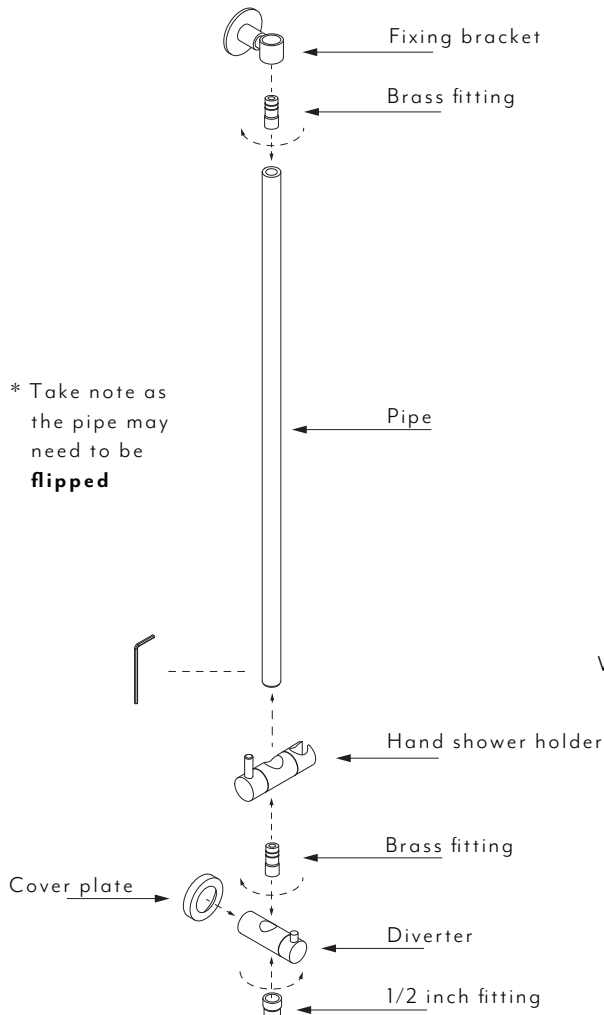
INSTALLATION GUIDE

Note: This product must be installed by a licensed plumber. This is a general installation guide - there are many factors involved that can alter the installation method. **AU/NZ:** For installations within Australia and New Zealand, this product must be installed in compliance with AS/NZS 3500. **UK:** For installations in the United Kingdom this product must be installed in compliance with the Water Supply (Water Fittings) Regulations and Water Supply (Water Fittings) (Scotland) Byelaws. **Other:** For installations outside these countries, this product must be installed in compliance with the standards in your respective country.



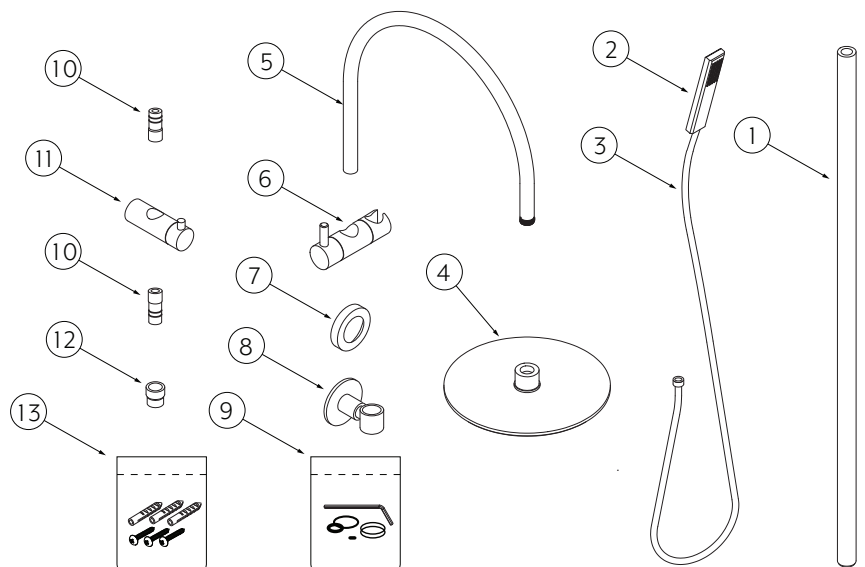
- 1 Assemble the following parts in the layout shown below. Ensure each part is secured by tightening each fitting with an alan key.

- 2 1. Connect to water outlet. Use appropriate thread sealant
2. Mark and fix pipe holder brackets.
3. Before attaching spout and shower head run the water through to clear pipe of debris.
4. Connect shower hose, run water through hose to clear any debris then attach hand shower.



What's in the box?

1. Pipe
2. Hand shower
3. Hose
4. Shower head
5. Gooseneck
6. Hand shower holder
7. Cover plate
8. Fixing bracket
9. Spare parts
10. Brass fitting [x2] *these may be attached to diverter.
11. Diverter
12. 1/2 Inch fitting
13. Fixing screws



TOP DIVERTER INSTALLATION

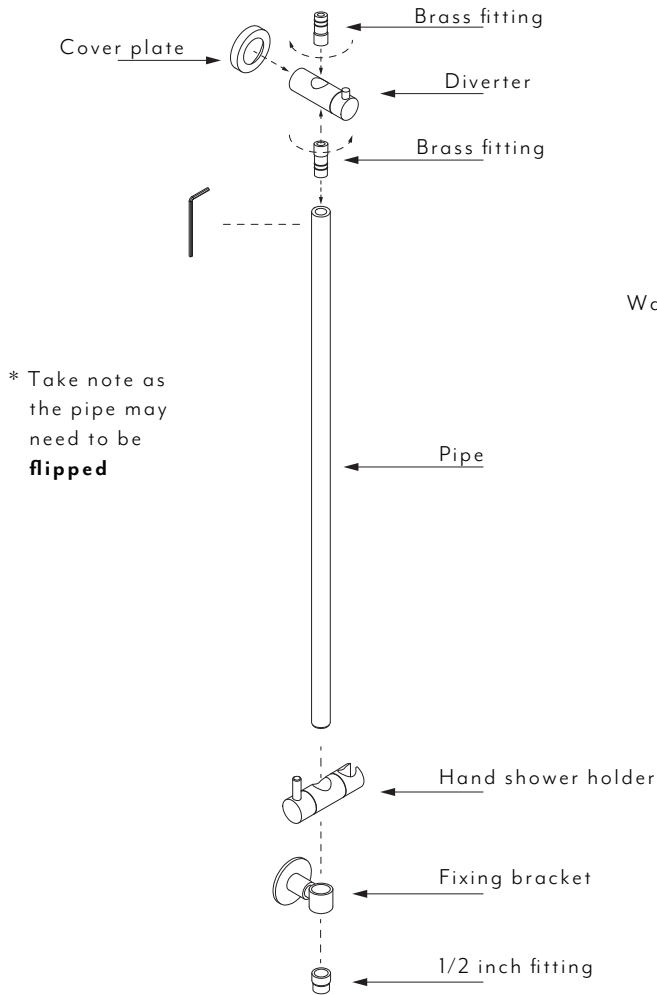
Please keep in mind, top
diverter installation can limit
the handheld movement along
the rail.

INSTALLATION GUIDE

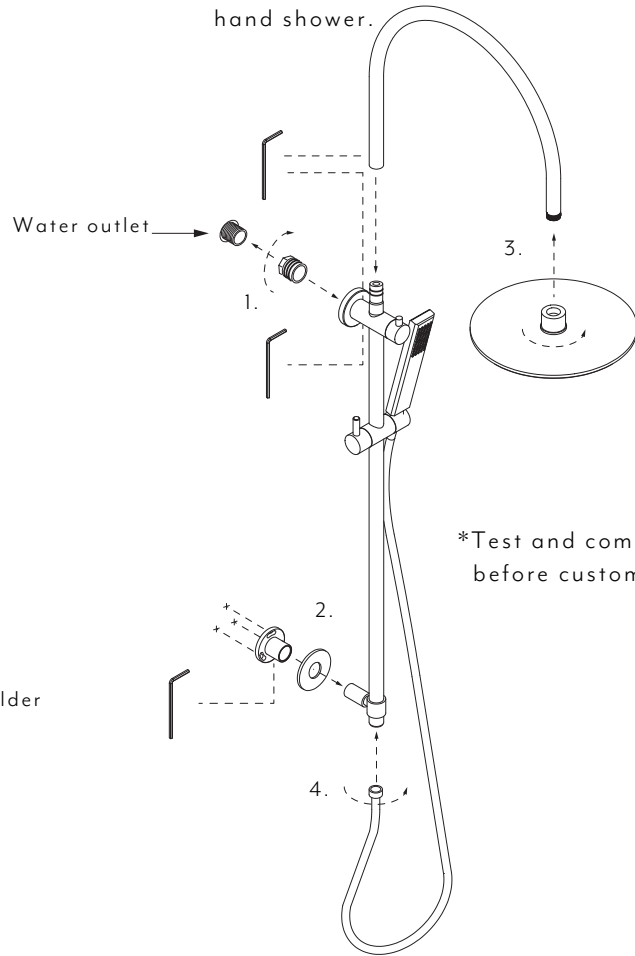
Note: This product must be installed by a licensed plumber. This is a general installation guide - there are many factors involved that can alter the installation method. **AU/NZ:** For installations within Australia and New Zealand, this product must be installed in compliance with AS/NZS 3500. **UK:** For installations in the United Kingdom this product must be installed in compliance with the Water Supply (Water Fittings) Regulations and Water Supply (Water Fittings) (Scotland) Byelaws. **Other:** For installations outside these countries, this product must be installed in compliance with the standards in your respective country.



- 1 Assemble the following parts in the layout shown below. Ensure each part is secured by tightening each fitting with an allen key.



- 2 1. Connect to water outlet. Use appropriate thread sealant.
2. Mark and fix pipe holder brackets.
3. Before attaching spout and shower head run the water through to clear pipe of debris.
4. Connect shower hose, run water through hose to clear any debris then attach hand shower.



What's in the box?

1. Pipe
2. Hand shower
3. Hose
4. Shower head
5. Gooseneck
6. Hand shower holder
7. Cover plate
8. Fixing bracket
9. Spare parts
10. Brass fitting [x2] *these may be attached to diverter.
11. Diverter
12. 1/2 Inch fitting
13. Fixing screws

