

Note: Dimensions are nominal measurements only

SPECIFICATIONS

RECOMMENDED USE

Domestic

MATERIAL

Solid Brass

TEMPERATURE RATING

Maximum continuous working temperature 75°C
If the water temperature exceeds 75°C, an approved tempering valve must be fitted

PRESSURE RATING

Recommended minimum working pressure 150kPa
Recommended maximum working pressure 500kPa
Hot and cold water inlet pressure should be equal

SUITABLE HOT WATER UNITS

Storage tank: Yes
Continuous Flow: Yes
Gravity Feed: Not suitable

STANDARDS

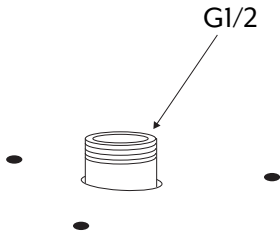
WELS 5 star, 6L/min, T39797
WELS star rating only applies when this product is installed over a basin

INSTALLATION GUIDE

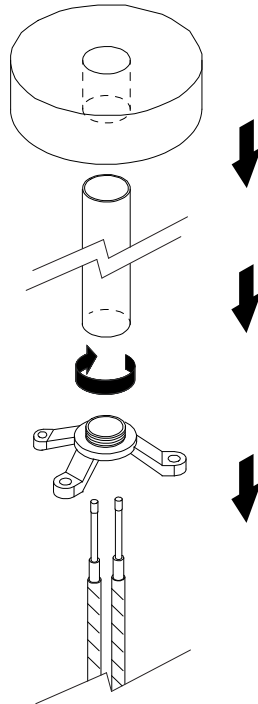
Note: This product must be installed by a licensed plumber. This is a general installation guide - there are many factors involved that can alter the installation method. **AU/NZ:** For installations within Australia and New Zealand, this product must be installed in compliance with AS/NZS 3500. **UK:** For installations in the United Kingdom this product must be installed in compliance with the Water Supply (Water Fittings) Regulations and Water Supply (Water Fittings) (Scotland) Byelaws. **Other:** For installations outside these countries, this product must be installed in compliance with the standards in your respective country.



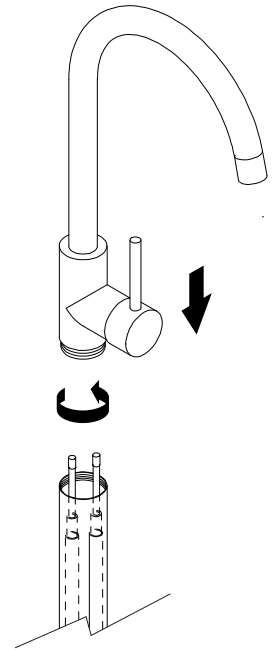
- 1** When installing into a concrete floor, a chase will need to be cut out of the concrete to rough in the supply pipe.
Rough in to a spout outlet with a 1/2" brass thread and cap until fit-off



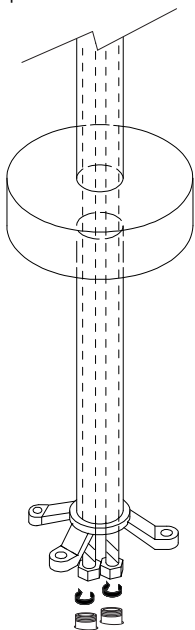
- 2** Feed the two flexible hoses through the floor bracket, riser pipe & cover plate. Hand tighten riser pipe into the bracket and slide cover plate onto riser pipe.



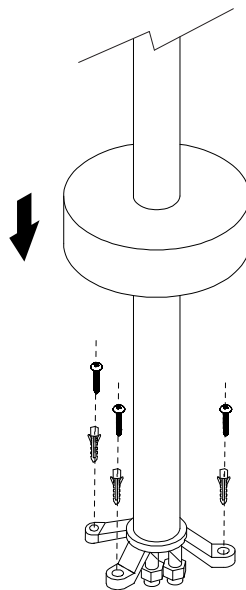
- 3** Connect the two flexible hoses into the mixer by hand tightening & making a final adjustment with a spanner.
Note: overtightening can lead to kinked pipes.
Hand tighten riser pipe on to mixer.



- 4** Connect the two flexible hoses into the water supply by hand tightening & making a final adjustment with a spanner.
Note: over tightening can lead to kinked pipes.

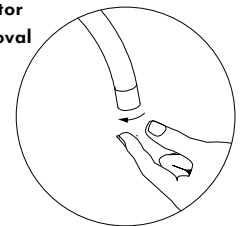


- 5** Screw mounting bracket to floor using fixings provided. Slide cover plate down into position.



- 6** For use over bath where a higher flow rate is desired, a non restricting aerator can be purchased separately.

Aerator Removal



Note: WELS star rating does not apply when non-restricting aerator is installed.



Regularly clean with mild liquid detergent or soap and water.



DO NOT use cream cleaners or bleach. These substances are abrasive.



DO NOT use cleaning pads with abrasive surfaces as this may scratch the material.