

**Note:** Dimensions are nominal measurements only

SPECIFICATIONS

RECOMMENDED USE | WARRANTY

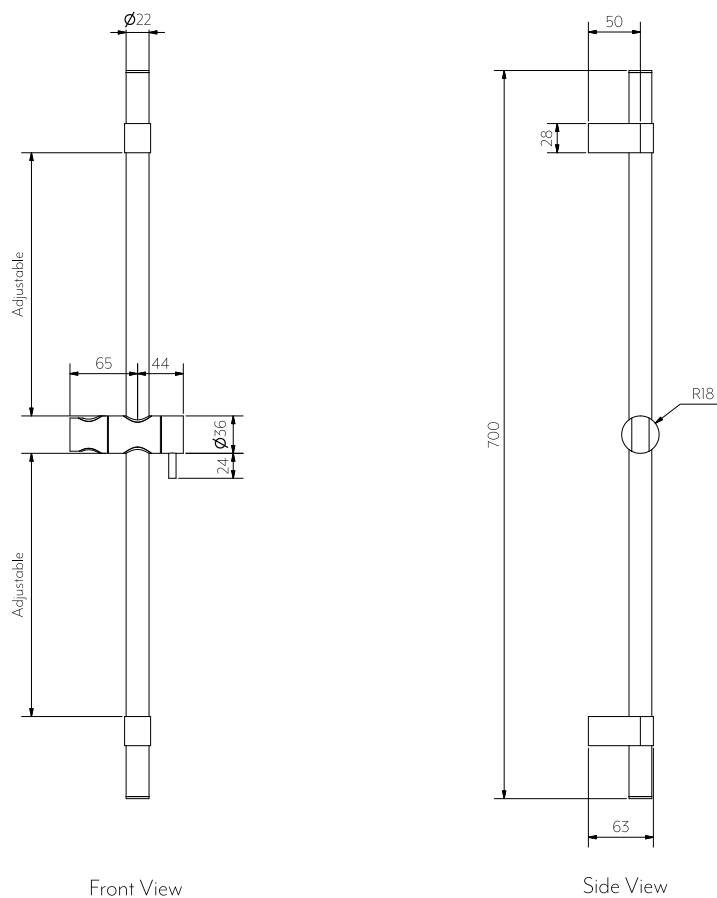
Domestic/Commercial | [Click here for warranty periods](#)

BOX

- Box 1: Elysian Adjustable Shower Rail
- Box 2: Rounded Rectangular Hand Shower
- Box 3: Round Shower BP
- Box 4:Shower Hose

STANDARDS

WELS 4 star, 7.5L/min, S45971



**Note:** Dimensions are nominal measurements only

## SPECIFICATIONS

### RECOMMENDED USE

Domestic

### MATERIAL

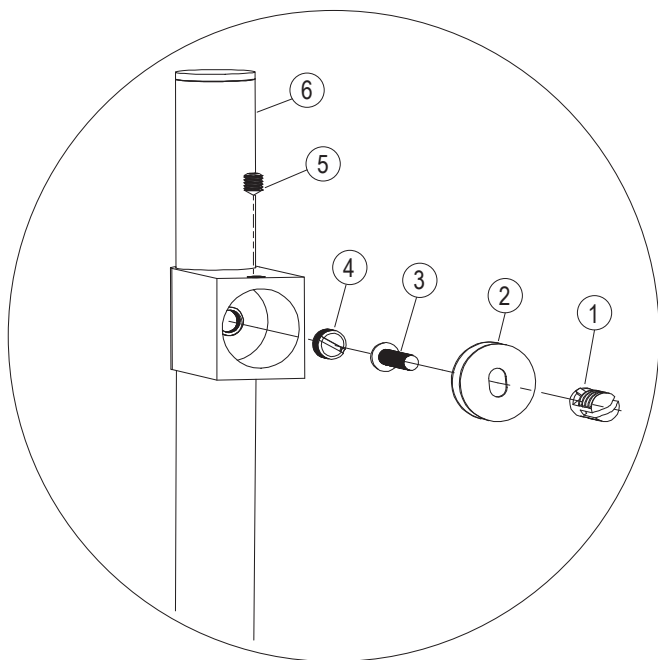
Solid Brass

### MOUNTING HARDWARE INCLUDED

Yes, 2x masonry screw, 2 x wall plug

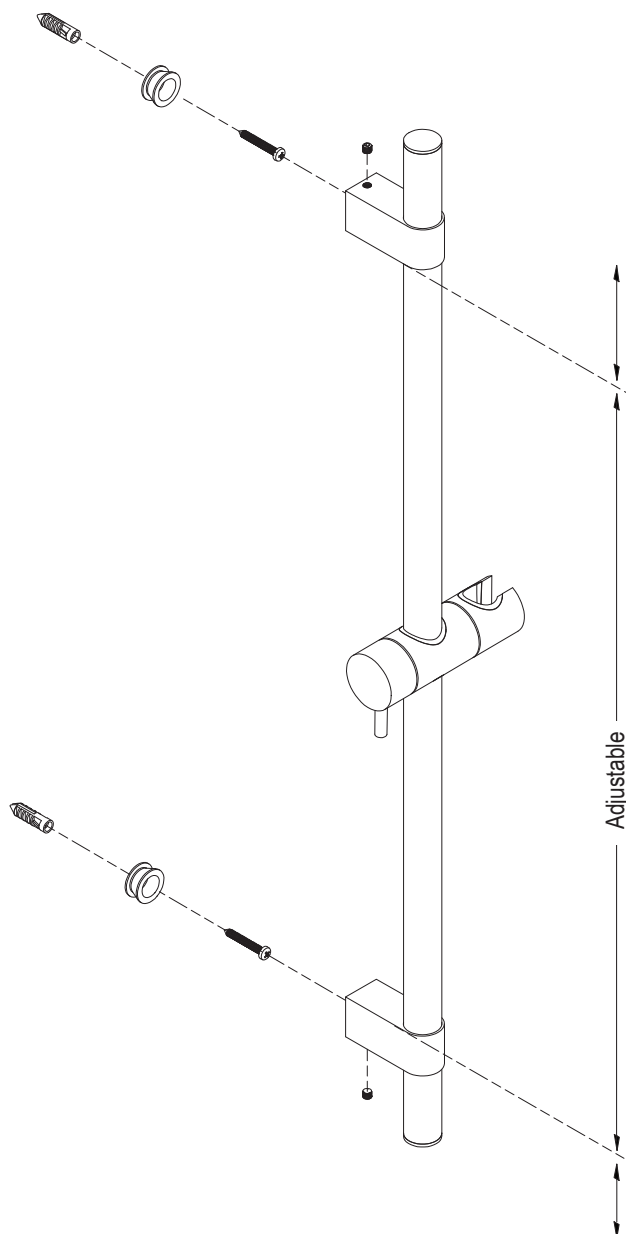
# INSTALLATION GUIDE

Note: This product must be installed by a licensed plumber.  
This is a general installation guide - there are many factors that are involved that can alter the installation method.  
This product install must comply with AS/NZS 3500.



Whats in the box	①		2 x Wall Plug	⑤		2 x Sml Grub Screw
	②		2 x Brass fixing bracket	⑥		1 x Shower Rail
	③		2 x Screw			
	④		2 x Large Grub Screw			

- ① Unfasten small grub screw and remove brass fixing bracket
- ② Loosen large grub screw with a screw driver and slide horizontal members into desired arrangement, retighten grub screw.
- ③ Measure new distance between large grub screws. Mark wall with new distance.
- ④ Drill holes with masonry drill bit (not on hammer) & fit wall plugs using a rubber mallet.
- ⑤ Screw the brass fixing bracket into the plugs.
- ⑥ Fit shower rail onto the brass fixing brackets and retighten small grub screw using the allen key.



Regularly clean with mild liquid detergent or soap and water.

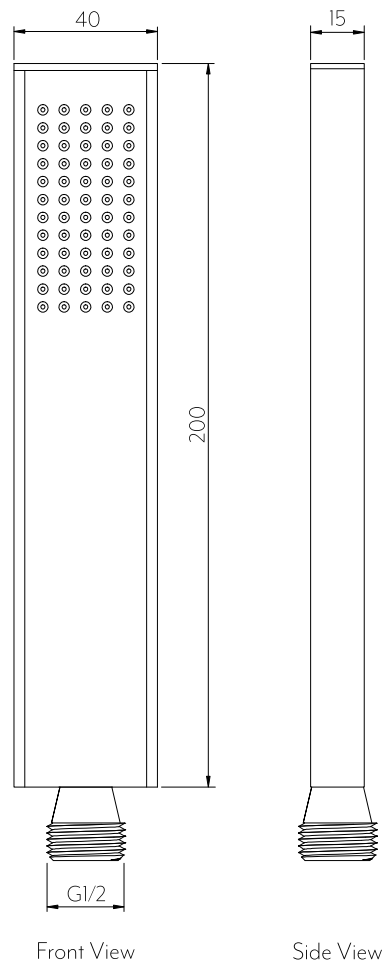


DO NOT use cream cleaners or bleach. These substances are abrasive.



DO NOT use cleaning pads with abrasive surfaces as this may scratch the material.

# ROUNDED RECTANGLE HAND SHOWER



**Note:** Dimensions are nominal measurements only

SPECIFICATIONS	
RECOMMENDED USE	Domestic
MATERIAL	Solid Brass
TEMPERATURE RATING	Maximum continuous working temperature 75°C If the water temperature exceeds 75°C,an approved tempering valve must be fitted
PRESSURE RATING	Recommended minimum working pressure 150kPa Recommended maximum working pressure 500kPa Hot and cold water inlet pressure should be equal
SUITABLE HOT WATER UNITS	Storage tank: Yes Continuous Flow: Yes Gravity Feed: Not suitable
STANDARDS	WELS 4 Star, 7L/min, S16475

# INSTALLATION GUIDE

**Note:** This product must be installed by a licensed plumber. This is a general installation guide - there are many factors involved that can alter the installation method. **AU/NZ:** For installations within Australia and New Zealand, this product must be installed in compliance with AS/NZS 3500. **UK:** For installations in the United Kingdom this product must be installed in compliance with the Water Supply (Water Fittings) Regulations and Water Supply (Water Fittings) (Scotland) Byelaws. **Other:** For installations outside these countries, this product must be installed in compliance with the standards in your respective country.

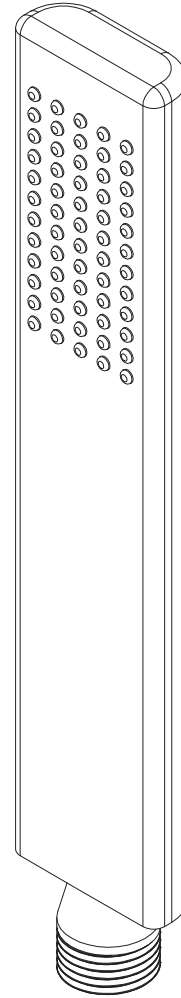


**STEP ONE:** Ensure flat washer is fitted inside the hose end.

**STEP TWO:** Connect the swivelling cone end of hose in a clockwise direction onto the Vino Hand Shower and hand tighten

**Note: Please take care not to damage the flow controller whilst connecting.**

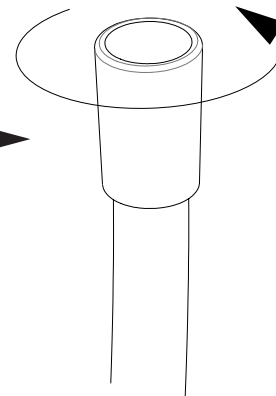
Hand Shower



Flat Washer



Shower Hose Swivelling Cone



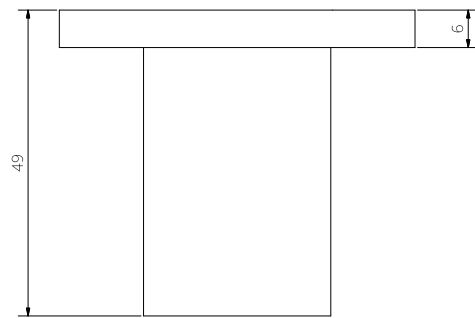
Regularly clean with mild liquid detergent or soap and water.



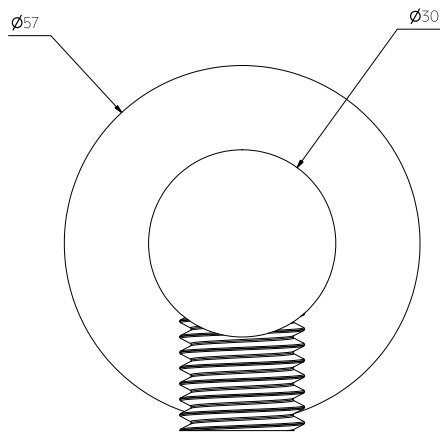
DO NOT use cream cleaners or bleach. These substances are abrasive.



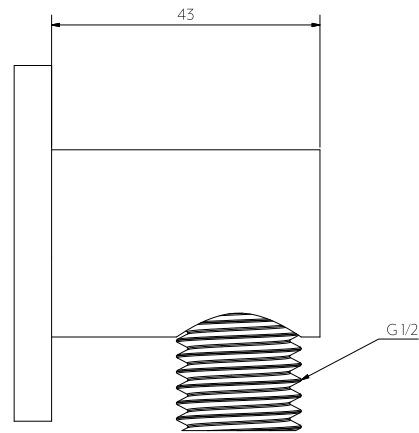
DO NOT use cleaning pads with abrasive surfaces as this may scratch the material.



Top View



Front View



Side View

**Note:** Dimensions are nominal measurements only

## SPECIFICATIONS

### RECOMMENDED USE

Domestic

### MATERIAL

Solid Brass

### TEMPERATURE RATING

Maximum continuous working temperature 75°C  
If the water temperature exceeds 75°C, an approved tempering valve must be fitted

### PRESSURE RATING

Recommended minimum working pressure 150kPa  
Recommended maximum working pressure 500kPa  
Hot and cold water inlet pressure should be equal

### SUITABLE HOT WATER UNITS

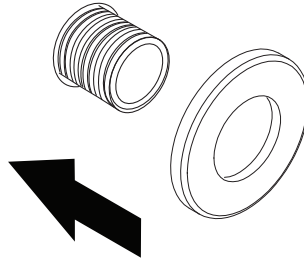
Storage tank: Yes  
Continuous Flow: Yes  
Gravity Feed: Not suitable

# INSTALLATION GUIDE

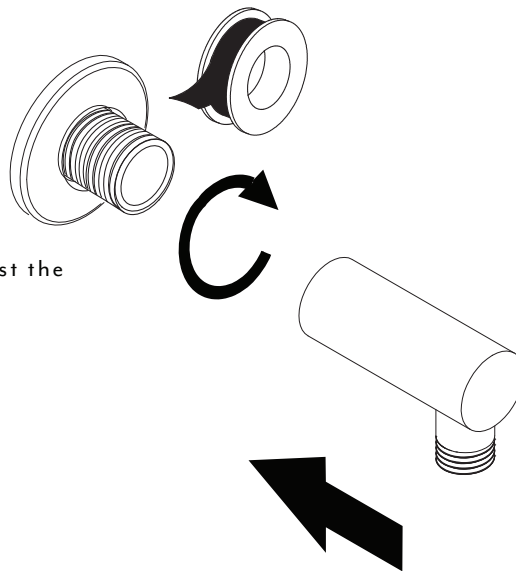
**Note:** This product must be installed by a licensed plumber. This is a general installation guide - there are many factors involved that can alter the installation method. **AU/NZ:** For installations within Australia and New Zealand, this product must be installed in compliance with AS/NZS 3500. **UK:** For installations in the United Kingdom this product must be installed in compliance with the Water Supply (Water Fittings) Regulations and Water Supply (Water Fittings) (Scotland) Byelaws. **Other:** For installations outside these countries, this product must be installed in compliance with the standards in your respective country.


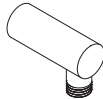


- 1 Slide backplate onto water outlet.



- 2 Apply the teflon tape to the brass outlet pipe. Twist the BP on and hand tighten.



WHAT'S IN THE BOX	
	
1x Backplate	1x BP Body



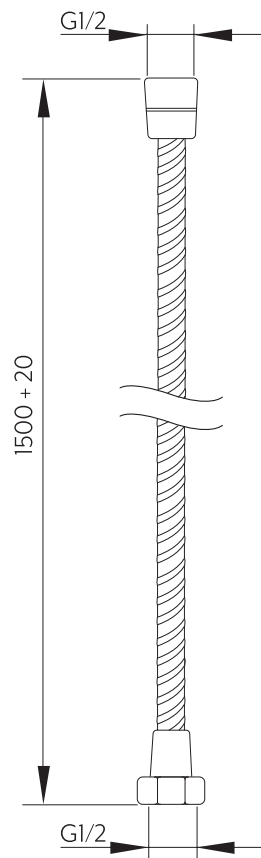
Regularly clean with mild liquid detergent or soap and water.



DO NOT use cream cleaners or bleach. These substances are abrasive.



DO NOT use cleaning pads with abrasive surfaces as this may scratch the material.



**Note:** Dimensions are nominal measurements only

## SPECIFICATIONS

### RECOMMENDED USE

Domestic

### MATERIAL

Stainless Steel

### TEMPERATURE RATING

Maximum continuous working temperature 75°C  
If the water temperature exceeds 75°C, an approved tempering valve must be fitted

### PRESSURE RATING

Recommended minimum working pressure 150kPa  
Recommended maximum working pressure 500kPa  
Hot and cold water inlet pressure should be equal