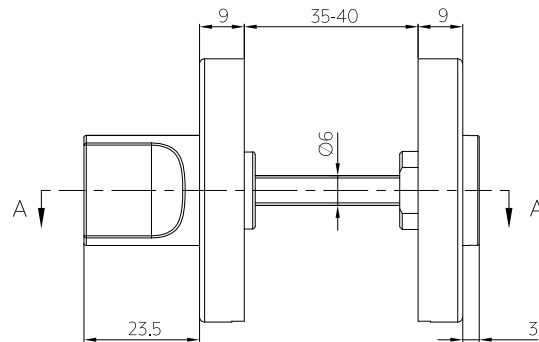
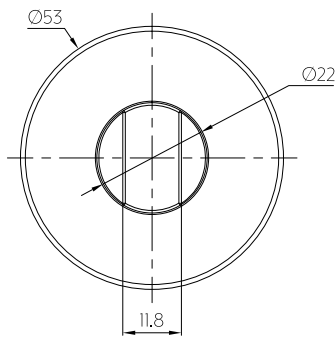


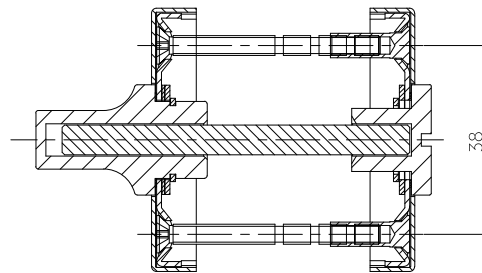
Internal Front View



Side View



External Front View



Section A-A

Note: Dimensions are nominal measurements only

SPECIFICATIONS

RECOMMENDED USE

Domestic

MATERIAL

304 Stainless Steel

MOUNTING HARDWARE INCLUDED

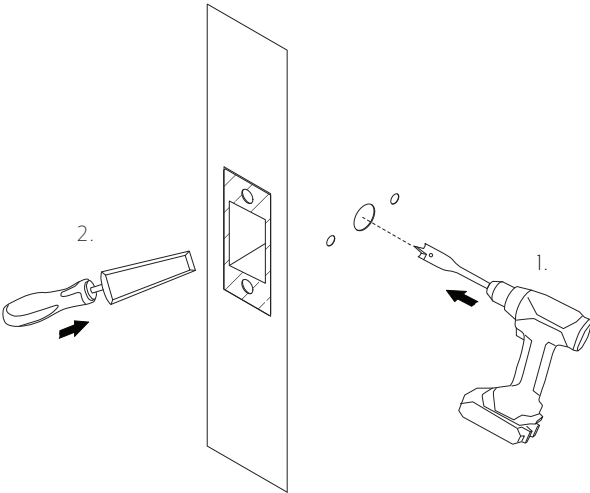
Yes, 4x Dead Bolt Screws
4x Cover Plate Screws

INSTALLATION GUIDE

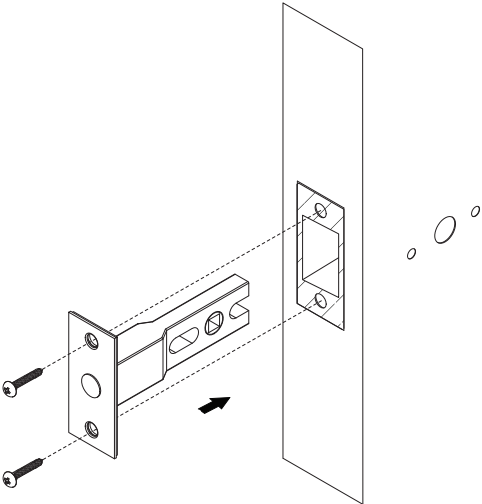
This product must be installed by a licensed tradesperson.
This is a general installation guide - there are many factors that are involved that can alter the installation method. This product install must comply with the standards in your respective country and must be adhered to by your licensed tradesperson.



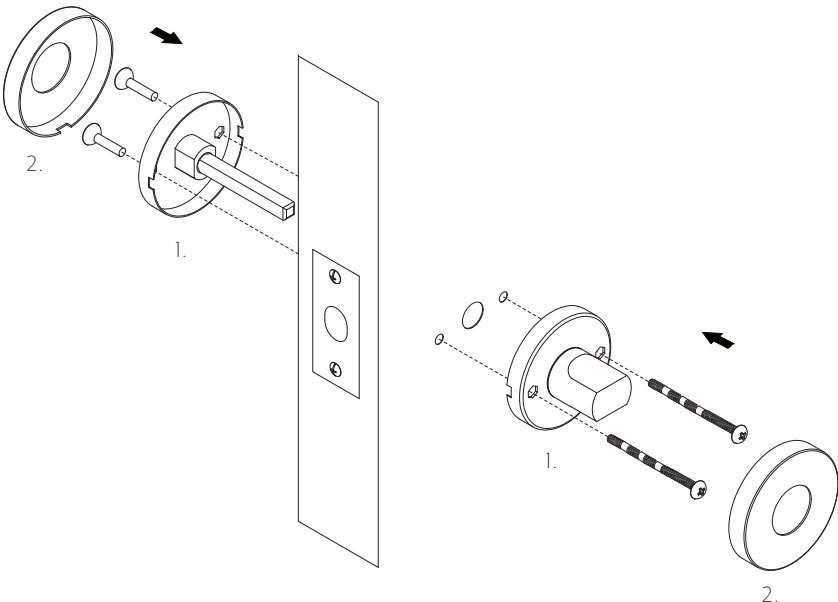
- 1
1. Drill prescribed holes/ recess into door face as per door cutting guide.
2. Chisel out and check in prescribed sections into door as per cutting guide.



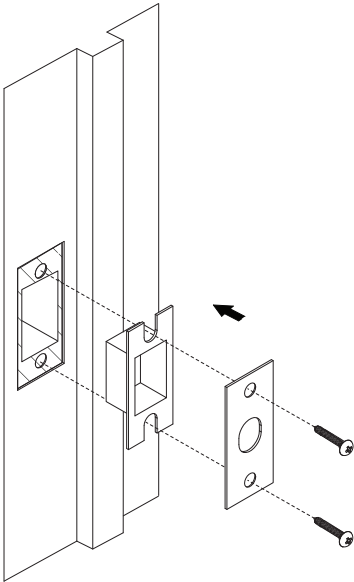
- 2
- Install the tubular privacy bolt into prescribed hole.




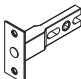



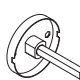




- 3
1. Fix turn snib and emergency release to tubular privacy bolt.
2. Fit cover plates.



- 4
- Check striker plate into jamb in relation to tubular privacy bolt.



IN THE BOX		4x Dead Bolt Screws		1x Strike Plate Insert		1x Turn Snib		1x Tubular Privacy Bolt
		4x Cover Plate Screws		1x Strike Plate Cover		2x Cover Plates		1x Emergency Release
		2x Screw Caps						
		2x Connection Screws						

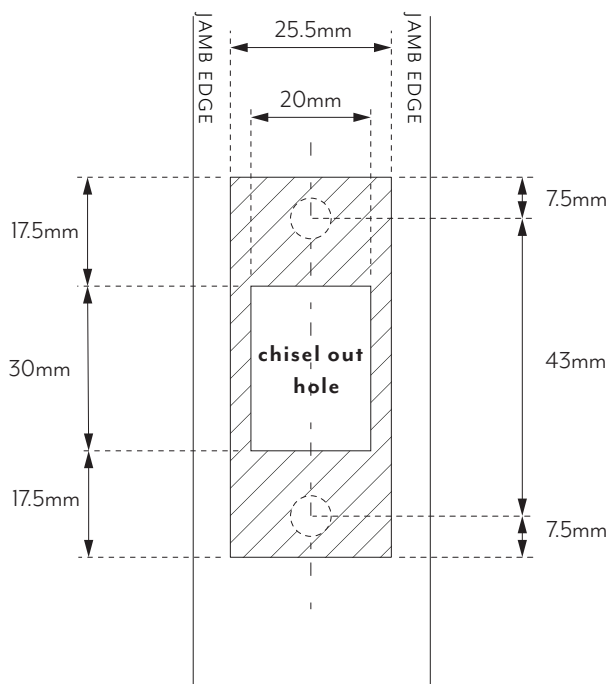
INSTALLATION GUIDE

This product must be installed by a licensed tradesperson.

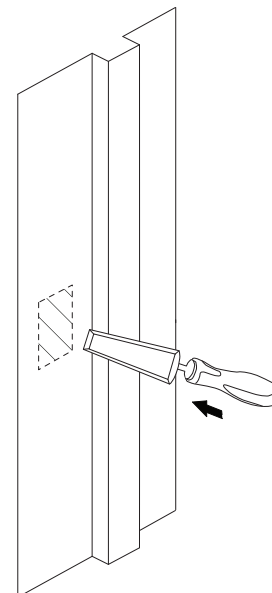
This is a general installation guide - there are many factors that are involved that can alter the installation method. This product install must comply with the standards in your respective country and must be adhered to by your licensed tradesperson.



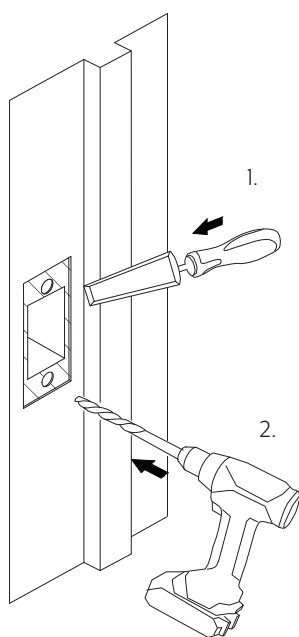
- 1 Use cutting guide to mark out striker plate position in relation to door latch.



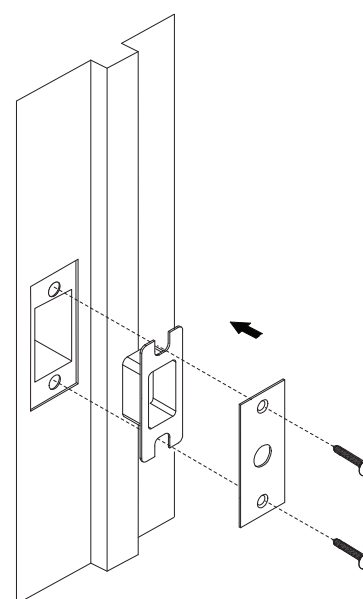
- 2 Chisel out a hole 16mm deep, 30mm high x 20mm wide.



- 3 1. Check in 58mm high x 25.5mm wide x 4mm deep.
2. Predrill perscribed holes.



- 4 Check striker plate into jamb in relation to door latch.



Regularly clean with mild liquid detergent or soap and water.



DO NOT use cream cleaners or bleach. These substances are abrasive.



DO NOT use cleaning pads with abrasive surfaces as this may scratch the material.

INSTALLATION GUIDE

This product must be installed by a licensed tradesperson.

This is a general installation guide - there are many factors that are involved that can alter the installation method. This product install must comply with the standards in your respective country and must be adhered to by your licensed tradesperson.



DOOR CUTTING GUIDE

