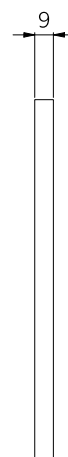


Front View



Side View

Note: Dimensions are nominal measurements only

SPECIFICATIONS

RECOMMENDED USE

Domestic/Commercial

MATERIAL

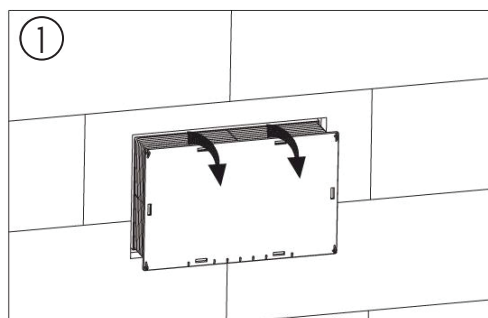
Glass or ABS Plastic

INSTALLATION

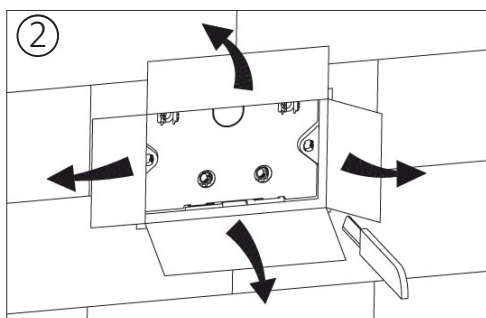
Wall Mounted (to be combined with ABI In-Wall Cistern)

INSTALLATION GUIDE

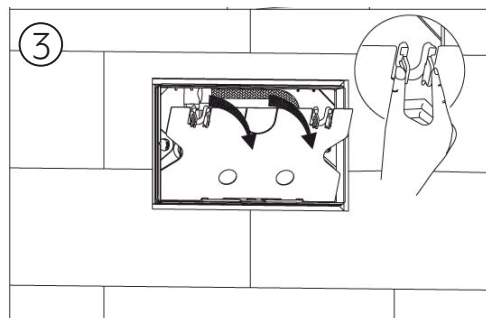
Note: This product must be installed by a licensed plumber.
This is a general installation guide - there are many factors that are involved that can alter the installation method. The standards in your respective country must be adhered to by your licensed tradesperson.



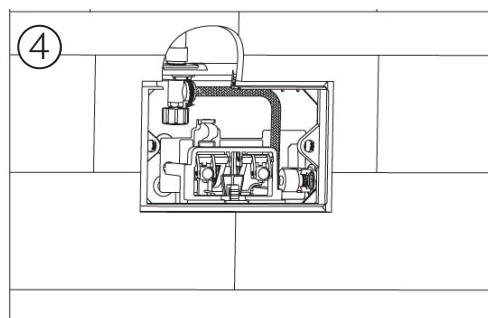
Cut plastic tabs from button housing



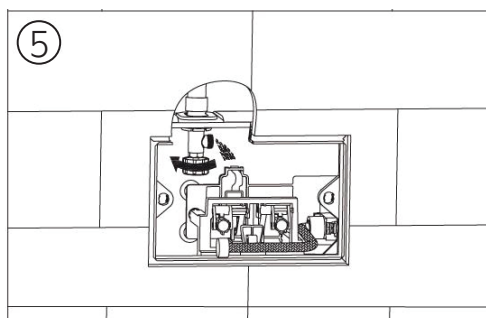
Fold back and trim



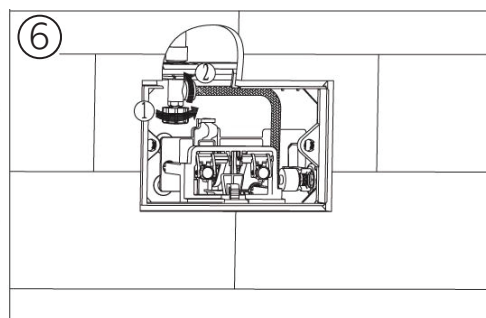
Remove cistern plate by squeezing clips



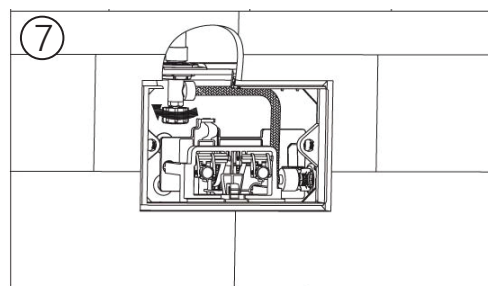
Remove hose by twisting anti-clockwise



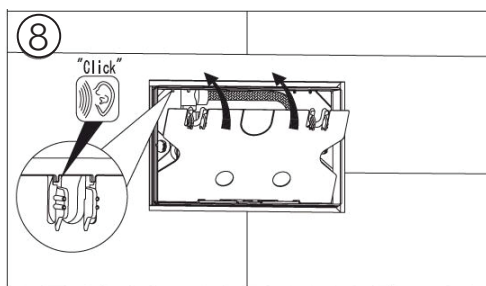
Turn valve on and flush out debris



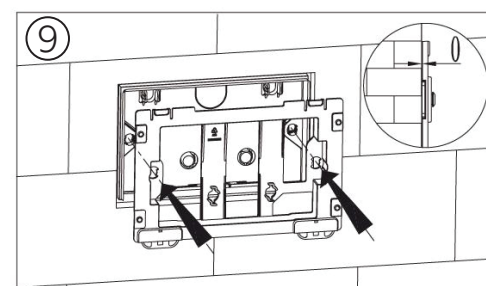
Turn valve off and reconnect hose



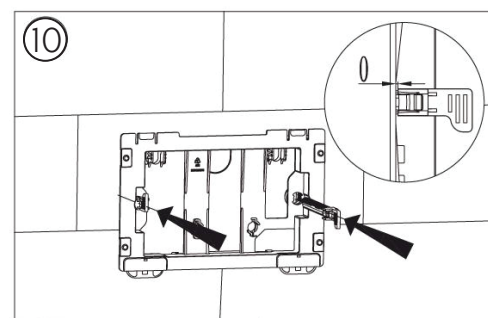
Turn on and check for leaks



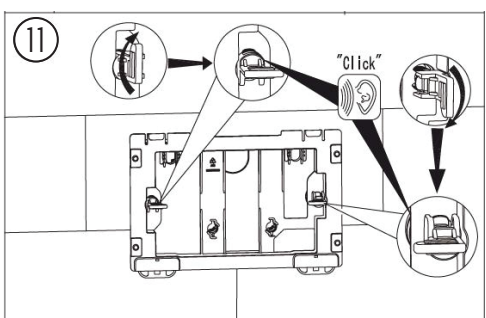
Refit cistern plate - this should click into place



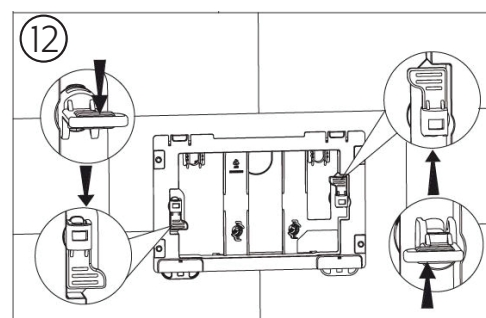
Fix internal button plate (3). Tip: Hold the plate horizontally - facing upwards. Drop the lock threads (4) through the holes to allow them to spin freely.



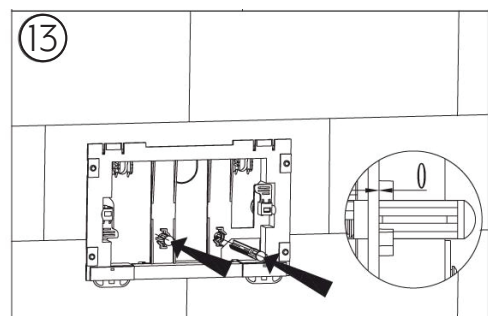
Hold button plate vertically and fit lock threads (4) into the cistern plate holes



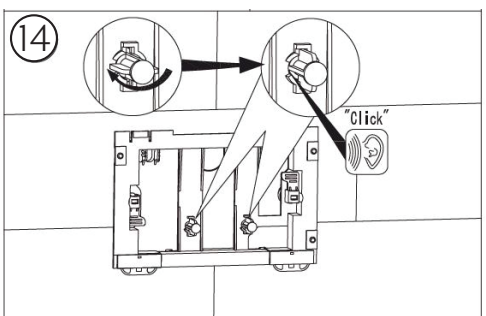
When plate (3) is in place, lock threads in by turning clockwise until they click.



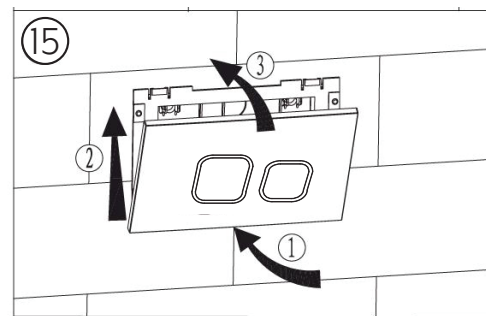
Fold tabs in (this allows the cover to sit flush)



Fit white and grey threads (5) into outlet flush valve by placing through holes in Internal Plate (3)



Turn threads clockwise until they click



Fit button face plate (6) by holding onto bottom of internal plate (3) pulling upwards and clicking top in