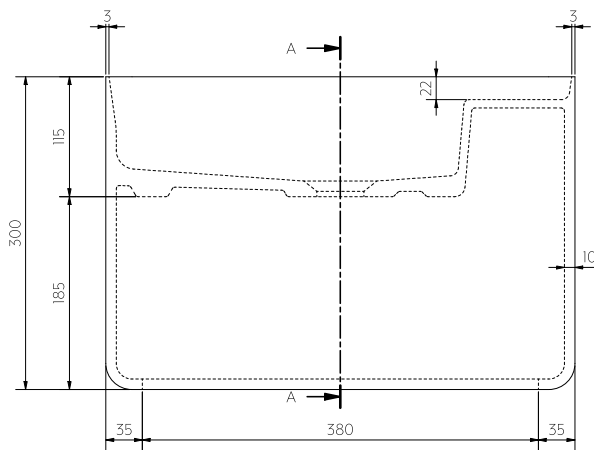
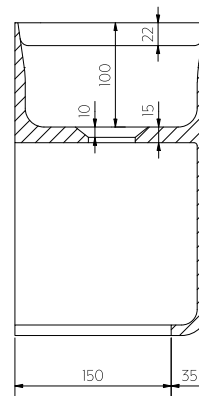


Top View



Front View



A-A

Note: Dimensions are nominal measurements only

SPECIFICATIONS

RECOMMENDED USE

Domestic

MATERIAL

Solid Surface

INSTALLATION

Wall Mount, recommended to be used with a bench mounted mixer or a spout with reach of 110mm or less.

OVERFLOW

No

CAPACITY

5.8L

RIM THICKNESS

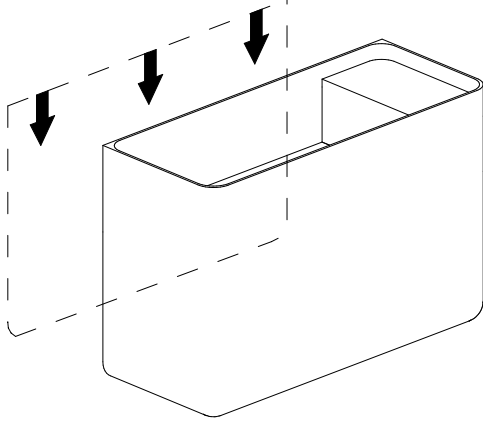
3mm

INSTALLATION GUIDE

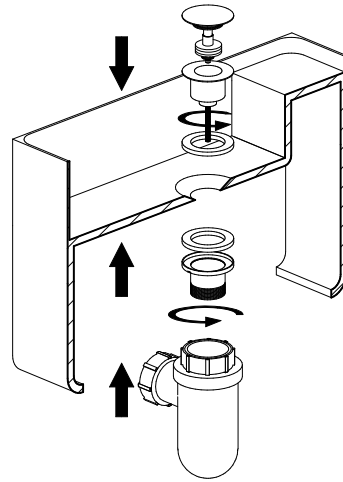
This product must be installed by a licensed plumber.
This is a general installation guide - there are many factors that are involved that can alter the installation method.
This product install must comply with AS/NZS 3500.



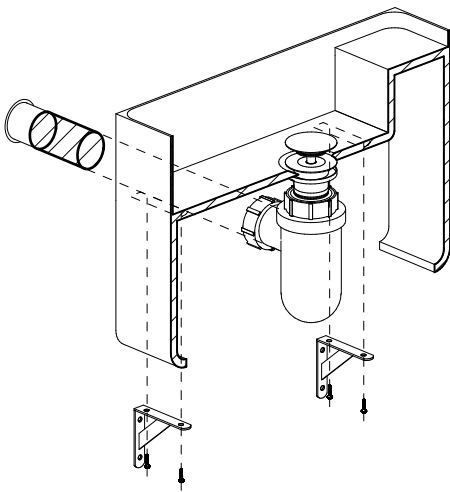
- 1 Check the desired height of basin from floor.



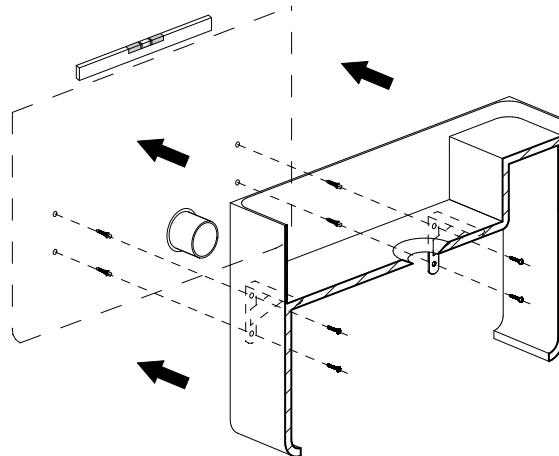
- 2 Fit pop up waste and trap to basin.



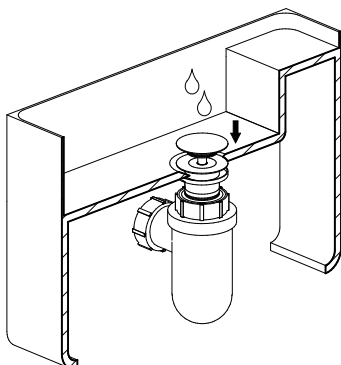
- 3 Fit brackets to underside of basin using fixings provided.
Hold basin against wall aligning outlet of trap with waste pipe & cut waste to suit trap.



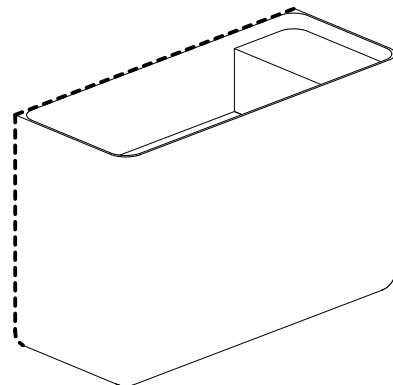
- 4 If correct height and position is suitable, level the top of the basin & mark out desired position.
Drill bracket holes and insert wall plugs. Fix basin wall through brackets with fixings provided.



- 5 Secure plumbing to basin and wall. Test by running water through the waste and pushing plug down.



- 6 Silicone top and sides of basin if necessary.



Regularly clean with mild liquid detergent or soap and water.



DO NOT use cream cleaners or bleach. These substances are abrasive.



DO NOT use cleaning pads with abrasive surfaces as this may scratch the material.