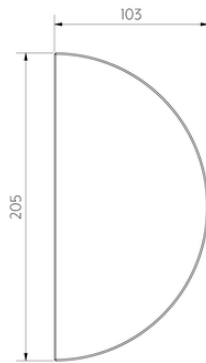


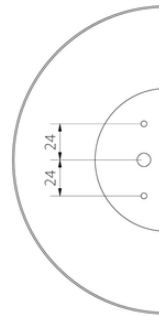
ATELIS CONCRETE HALF MOON ENTRY DOOR PULLS LOCK SET - PAIR



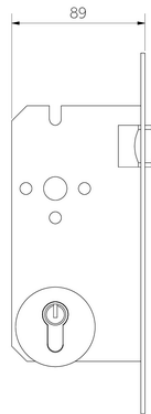
Front View



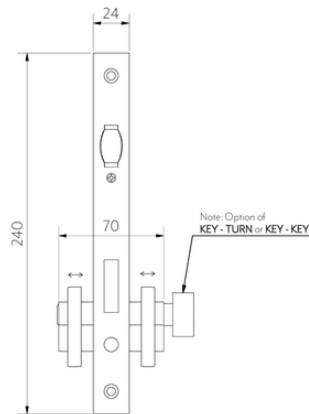
Side View



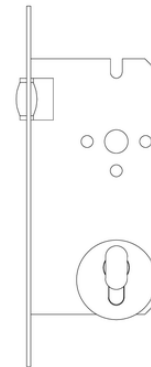
Back View



Front View



Side View



Back View

Note: Dimensions are nominal measurements only

SPECIFICATIONS

RECOMMENDED USE

Domestic/ Commercial

MATERIAL

Concrete/ Stainless Steel 316

DOOR THICKNESS

30-40mm

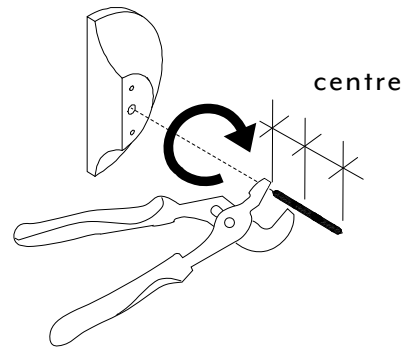
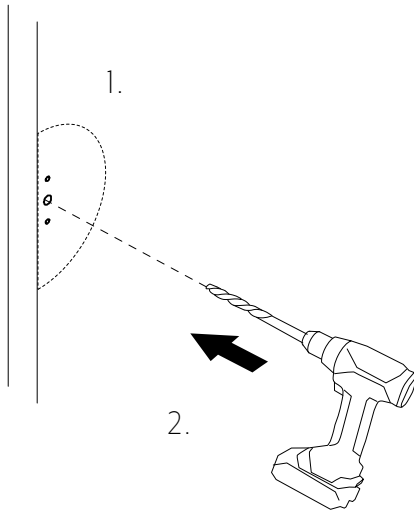
INSTALLATION GUIDE

Note: This product must be installed by a licensed plumber. This is a general installation guide - there are many factors involved that can alter the installation method. **AU/NZ:** For installations within Australia and New Zealand, this product must be installed in compliance with AS/NZS 3500. **UK:** For installations in the United Kingdom this product must be installed in compliance with the Water Supply (Water Fittings) Regulations and Water Supply (Water Fittings) (Scotland) Byelaws. **Other:** For installations outside these countries, this product must be installed in compliance with the standards in your respective country.

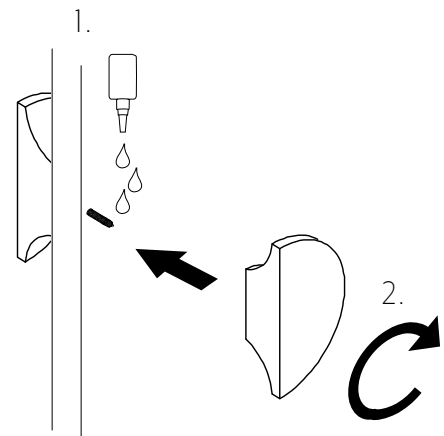
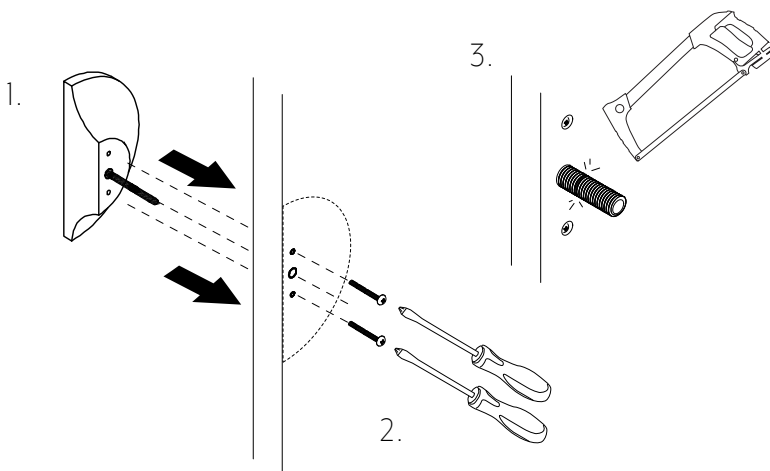


DOUBLE SIDED INSTALLATION

1. Measure and mark out the desired position for handle on both sides of door.
 2. Drill prescribed holes through door for handle fixings
1. Using multi grips fasten threaded bolt into handle.



3. Mount handle by inserting bolt and screws through drilled holes.
 2. Using a Phillips head screwdriver to fix screws into handle.
 3. Trim the bolt to suit your door thickness ensure there is 15mm of thread sticking out.
4. 1. Apply thread lock adhesive glue to threaded rod end.
 2. Screw remaining handle onto bolt until handle is flat and firm against door.



Regularly clean with mild liquid detergent or soap and water.



DO NOT use cream cleaners or bleach. These substances are abrasive.



DO NOT use cleaning pads with abrasive surfaces as this may scratch the material.

INSTALLATION GUIDE

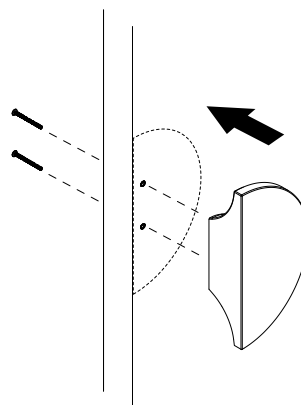
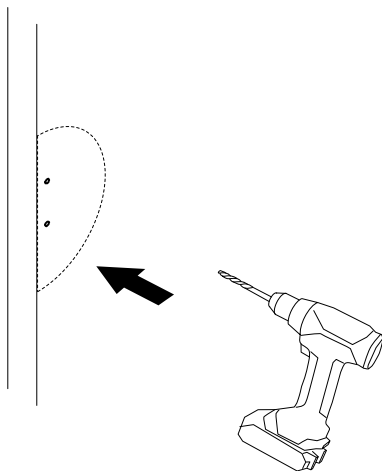
Note: This product must be installed by a licensed plumber. This is a general installation guide - there are many factors involved that can alter the installation method. **AU/NZ:** For installations within Australia and New Zealand, this product must be installed in compliance with AS/NZS 3500. **UK:** For installations in the United Kingdom this product must be installed in compliance with the Water Supply (Water Fittings) Regulations and Water Supply (Water Fittings) (Scotland) Byelaws. **Other:** For installations outside these countries, this product must be installed in compliance with the standards in your respective country.



SINGLE SIDED INSTALLATION

1. Measure and mark out the desired position for handle on both sides of door.
2. Mount handle by inserting bolt through drilled holes.

2. Drill prescribed holes through door for handle fixings



Regularly clean with mild liquid detergent or soap and water.



DO NOT use cream cleaners or bleach. These substances are abrasive.



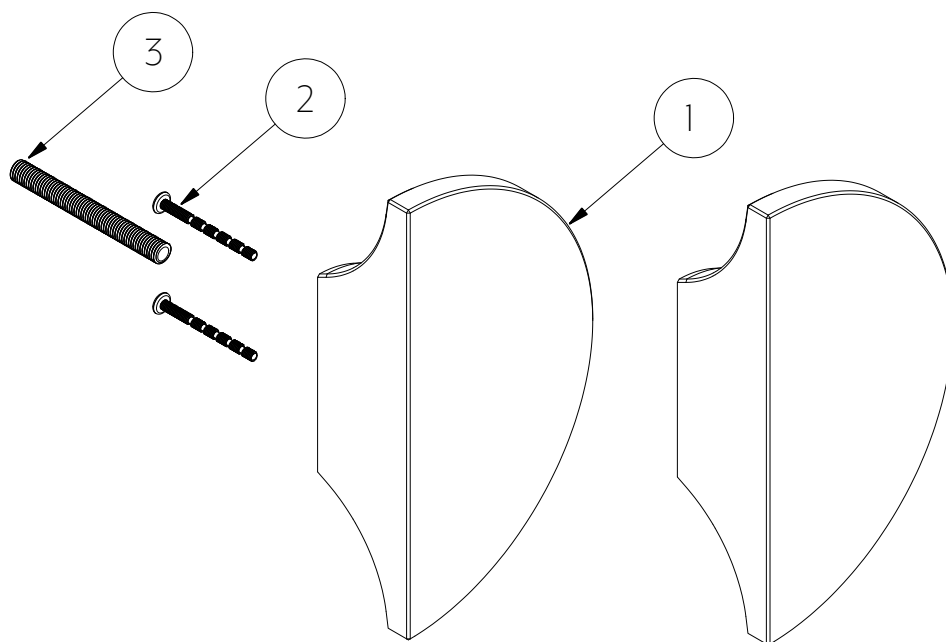
DO NOT use cleaning pads with abrasive surfaces as this may scratch the material.

INSTALLATION GUIDE

Note: This product must be installed by a licensed plumber. This is a general installation guide - there are many factors involved that can alter the installation method. **AU/NZ:** For installations within Australia and New Zealand, this product must be installed in compliance with AS/NZS 3500. **UK:** For installations in the United Kingdom this product must be installed in compliance with the Water Supply (Water Fittings) Regulations and Water Supply (Water Fittings) (Scotland) Byelaws. **Other:** For installations outside these countries, this product must be installed in compliance with the standards in your respective country.



In The Box



In The Box
1. Handle (x2) 2. Snap-off bolt (x4) 3. Fixing bolt (x1)



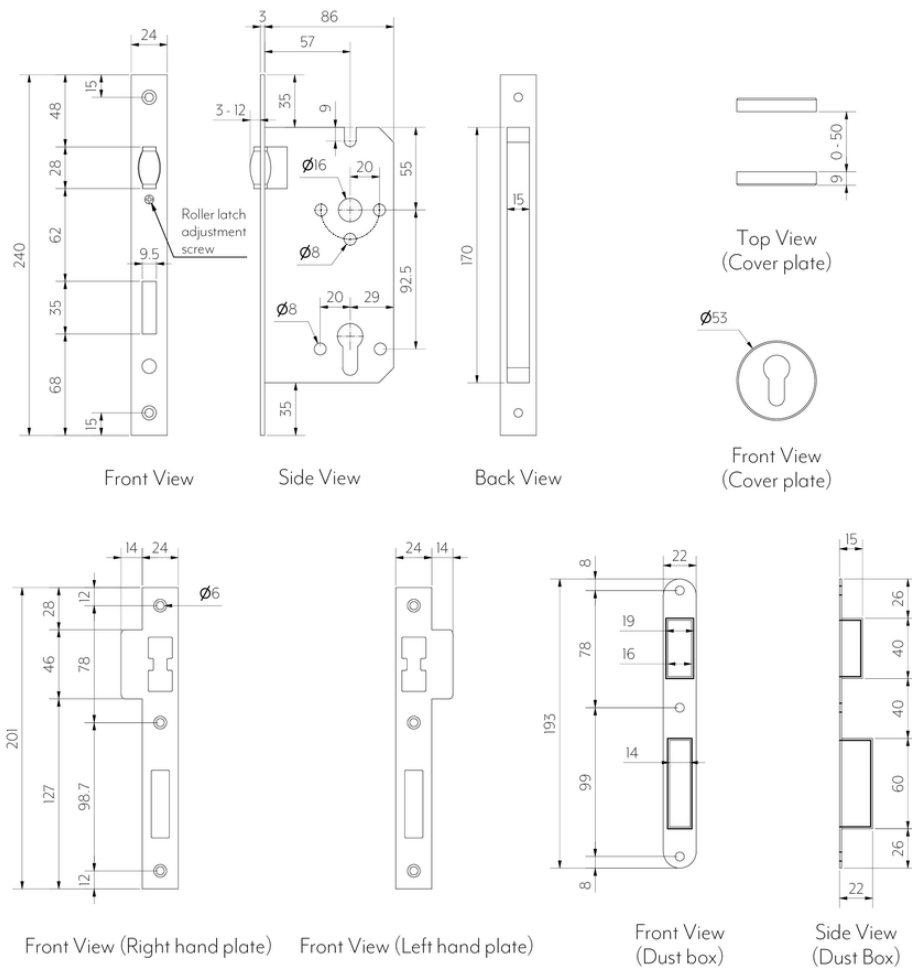
Regularly clean with mild liquid detergent or soap and water.



DO NOT use cream cleaners or bleach. These substances are abrasive.



DO NOT use cleaning pads with abrasive surfaces as this may scratch the material.



Note: Dimensions are nominal measurements only

SPECIFICATIONS

RECOMMENDED USE	Domestic/ Commercial
MATERIAL	Stainless Steel 316
DOOR THICKNESS	30-40mm

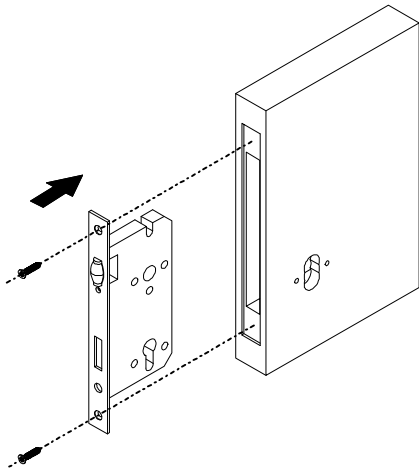
INSTALLATION GUIDE

Note: This product must be installed by a licensed plumber. This is a general installation guide - there are many factors involved that can alter the installation method. **AU/NZ:** For installations within Australia and New Zealand, this product must be installed in compliance with AS/NZS 3500. **UK:** For installations in the United Kingdom this product must be installed in compliance with the Water Supply (Water Fittings) Regulations and Water Supply (Water Fittings) (Scotland) Byelaws. **Other:** For installations outside these countries, this product must be installed in compliance with the standards in your respective country.

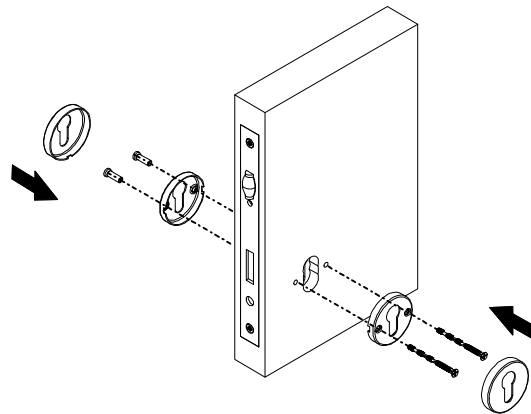
ABI
INTERIORS

Mortise Lock & Eurocylinder

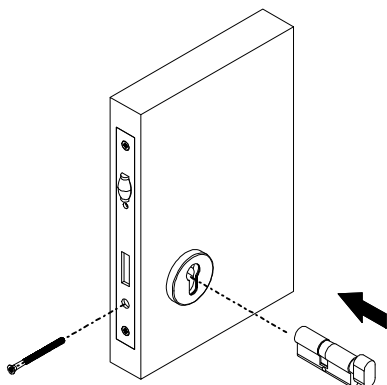
- ① Check in door according to the cutting guide & fix mortise lock into door using the screws provided.



- ② Depending on your door use the snap-off bolts or the fixings screw to secure the rose to either side of the door. Then push the cover plates over.

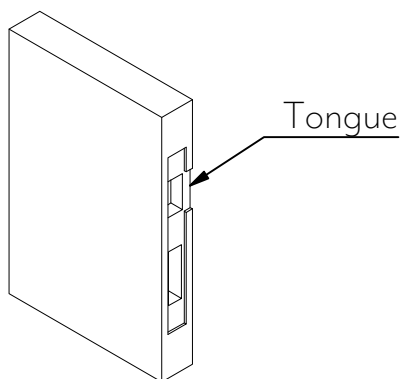


- ③ Insert the Eurocylinder and fix using the screw provided.

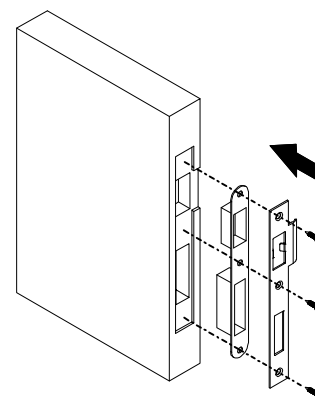


Strike Plate

- ① Check in door jam according to the cutting guide, be sure to cut the tongue in the direction the door swings.



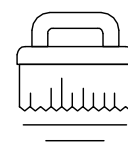
- ② Screw in dustbox and strike plate.



Regularly clean with mild liquid detergent or soap and water



DO NOT use cream cleaners or bleach. These substances are abrasive



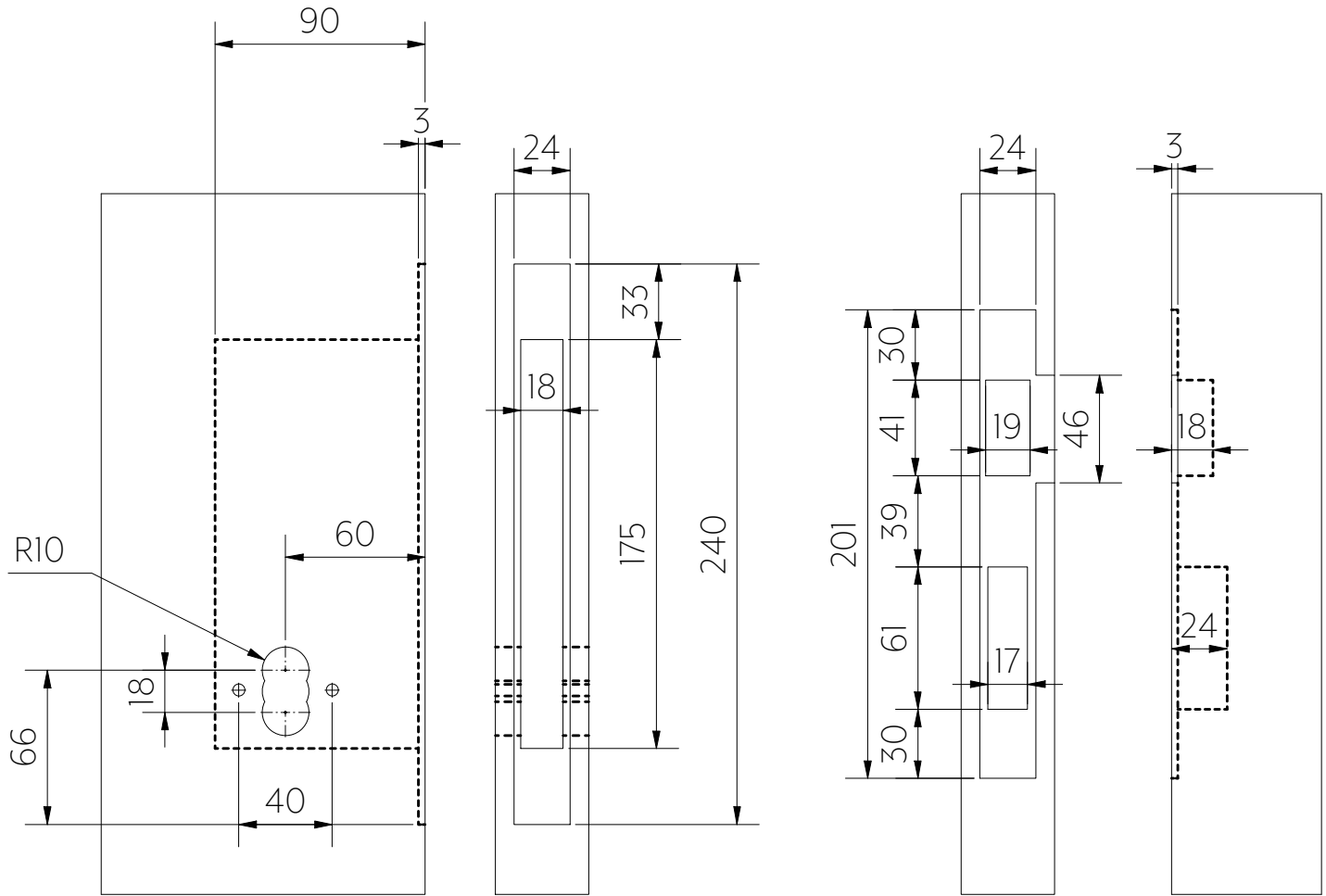
DO NOT use cleaning pads with abrasive surfaces as this may scratch the material

INSTALLATION GUIDE

Note: This product must be installed by a licensed plumber. This is a general installation guide - there are many factors involved that can alter the installation method. **AU/NZ:** For installations within Australia and New Zealand, this product must be installed in compliance with AS/NZS 3500. **UK:** For installations in the United Kingdom this product must be installed in compliance with the Water Supply (Water Fittings) Regulations and Water Supply (Water Fittings) (Scotland) Byelaws. **Other:** For installations outside these countries, this product must be installed in compliance with the standards in your respective country.



Cutting Guide



Roller latch & mortise lock

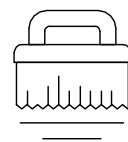
Strike plate



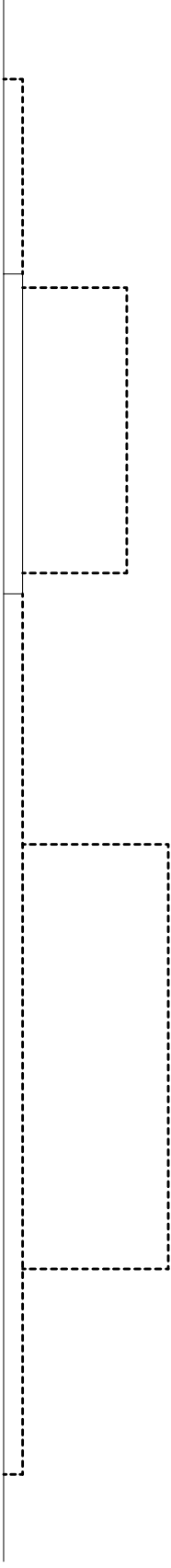
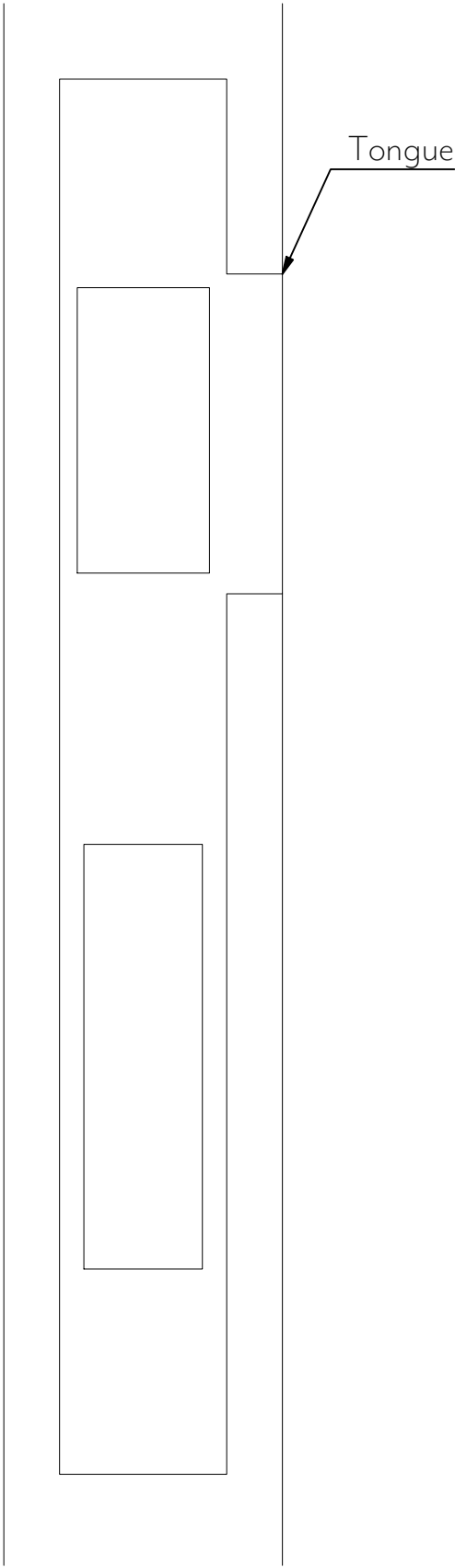
Regularly clean with mild liquid detergent or soap and water

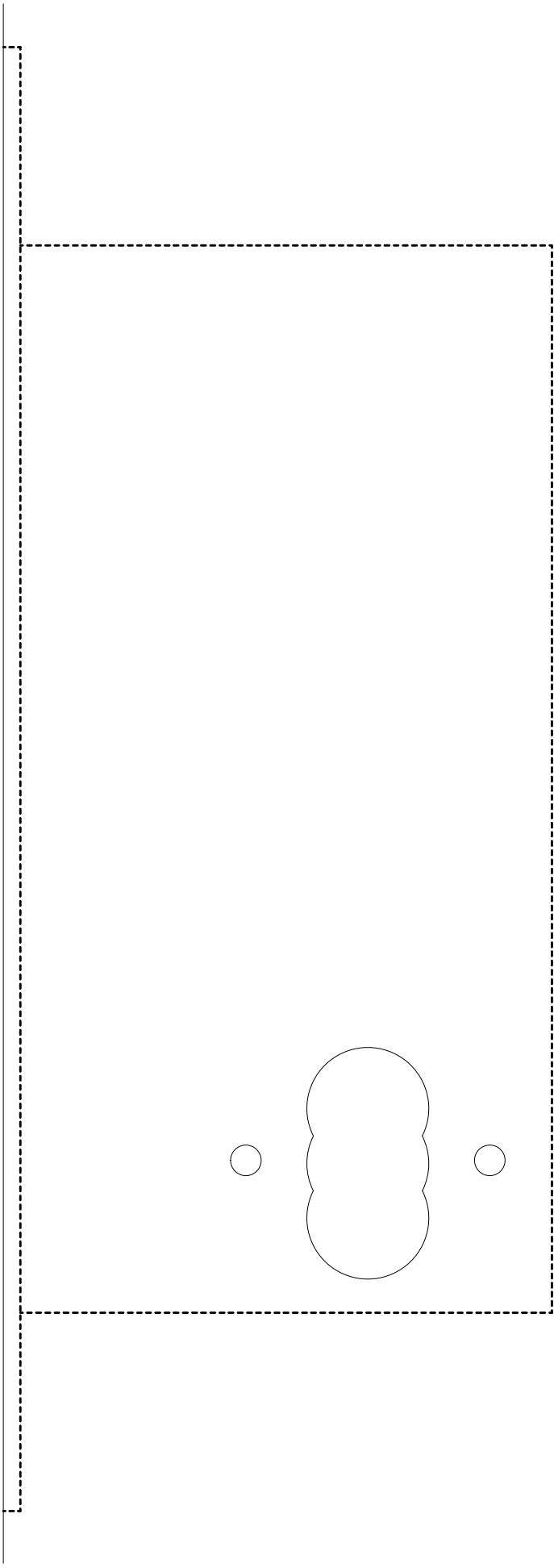
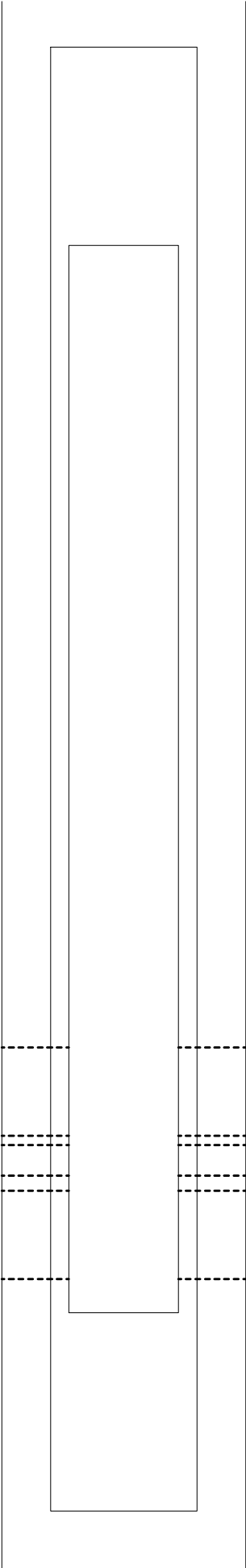


DO NOT use cream cleaners or bleach. These substances are abrasive



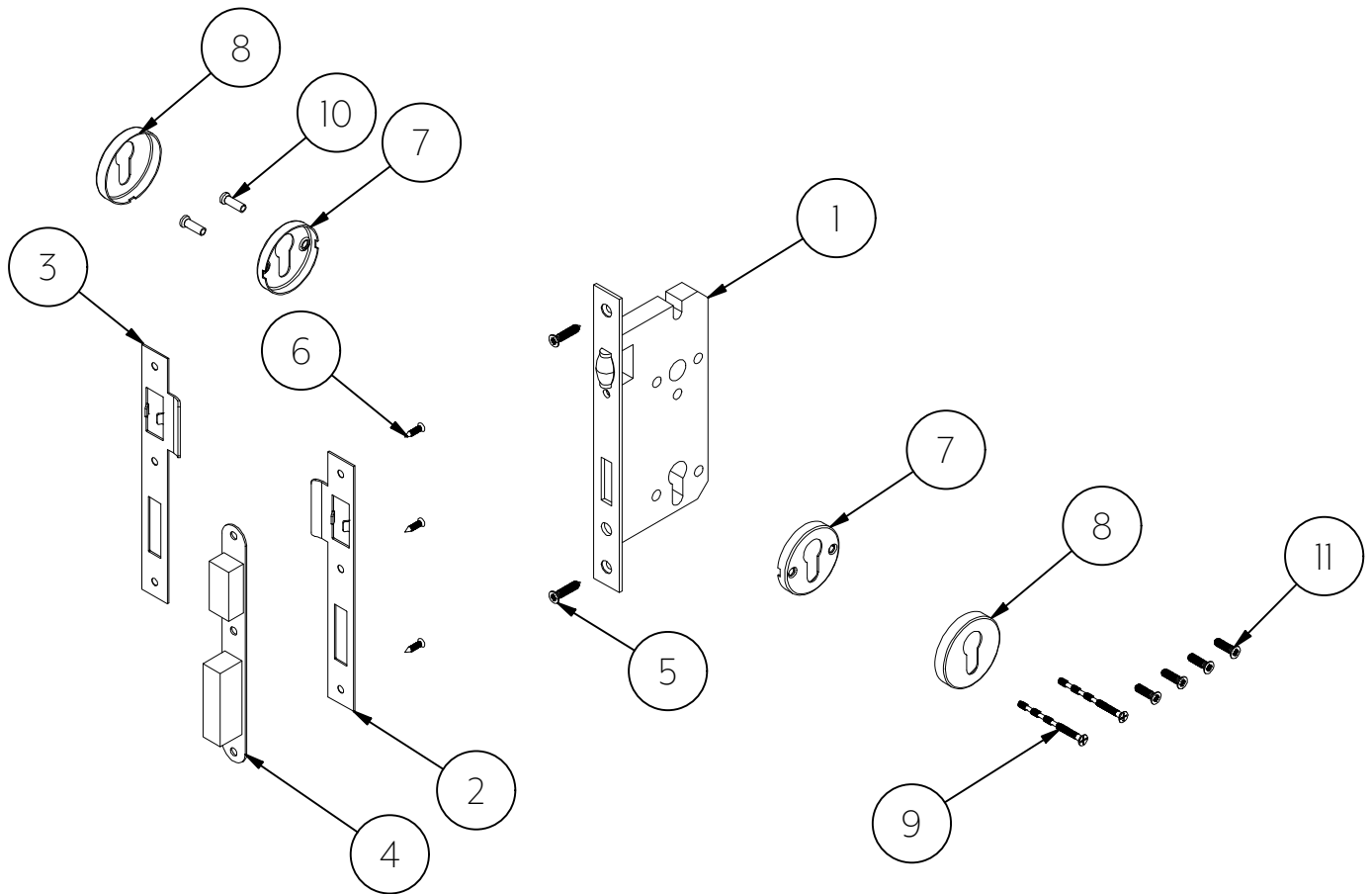
DO NOT use cleaning pads with abrasive surfaces as this may scratch the material





INSTALLATION GUIDE

Note: This product must be installed by a licensed plumber. This is a general installation guide - there are many factors involved that can alter the installation method. **AU/NZ:** For installations within Australia and New Zealand, this product must be installed in compliance with AS/NZS 3500. **UK:** For installations in the United Kingdom this product must be installed in compliance with the Water Supply (Water Fittings) Regulations and Water Supply (Water Fittings) (Scotland) Byelaws. **Other:** For installations outside these countries, this product must be installed in compliance with the standards in your respective country.



In The Box

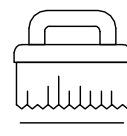
- 1. Roller catch/ mortise lock (x1)
- 2. Strike plate left (x1)
- 3. Strike plate right (x1)
- 4. Dust box (x1)
- 5. Fixing screw 25mm (x2)
- 6. Fixing screw 16mm (x3)
- 7. Bracket (x2)
- 8. Cover plate (x2)
- 9. M4 x 60mm Snap-off bolt (x2)
- 10. M4 Hex Nuts (x2)
- 11. Fixing screw 20mm (x4)



Regularly clean with mild liquid detergent or soap and water



DO NOT use cream cleaners or bleach. These substances are abrasive



DO NOT use cleaning pads with abrasive surfaces as this may scratch the material