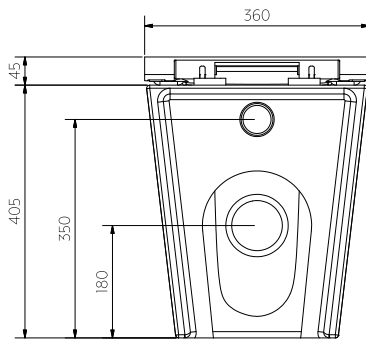
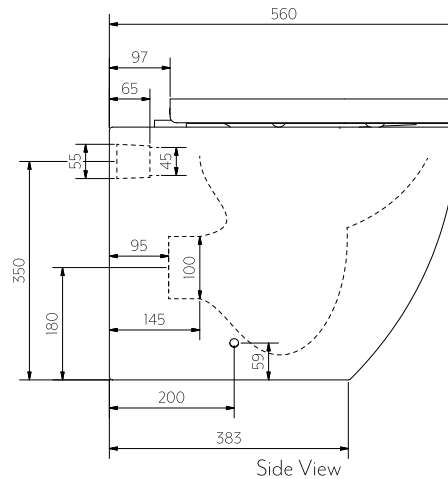


Top View (seat hidden in view)



Back View



Side View

Note: Dimensions are nominal measurements only

SPECIFICATIONS

RECOMMENDED USE

Domestic

MATERIAL

Pan: Glazed Porcelain

Seat: Soft close - Hardened Polypropylene (PP)

INSTALLATION

Floor Mounted

TEMPERATURE RATING

Maximum continuous working temperature 75°C

If the water temperature exceeds 75°C, an approved tempering valve must be fitted

PRESSURE RATING

Recommended minimum working pressure 150kPa

Recommended maximum working pressure 500kPa

Hot and cold water inlet pressure should be equal

STANDARDS

Registration No. L07246 | WELS: 4 Star |

Flow Rate: Half Flush: 3.2L, Full Flush: 4.7L

Average Flush: 3.5L, WMK25988

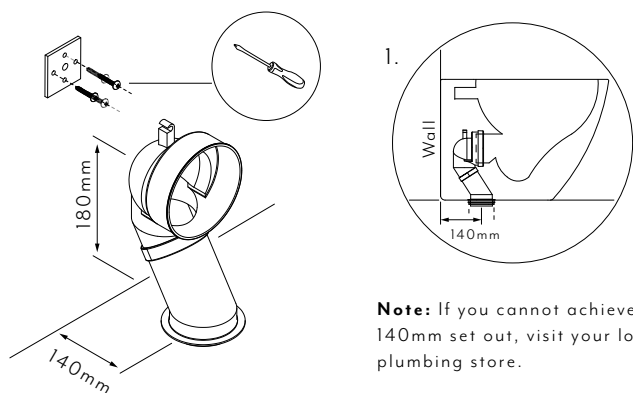
INSTALLATION GUIDE

Note: This product must be installed by a licensed plumber. This is a general installation guide - there are many factors involved that can alter the installation method. **AU/NZ:** For installations within Australia and New Zealand, this product must be installed in compliance with AS/NZS 3500. **UK:** For installations in the United Kingdom this product must be installed in compliance with the Water Supply (Water Fittings) Regulations and Water Supply (Water Fittings) (Scotland) Byelaws. **Other:** For installations outside these countries, this product must be installed in compliance with the standards in your respective country.

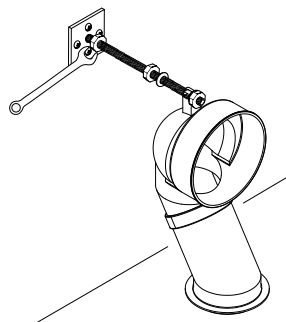


- ① Align S trap adaptor with pipe riser and fix wall bracket accordingly. Ensure a **140mm** set out from wall to pipe centre.

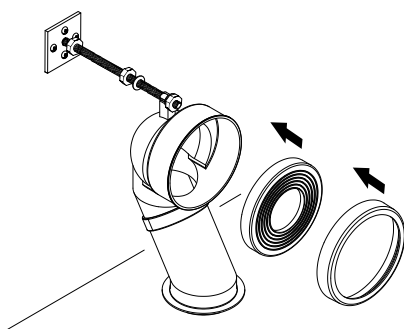
Note: Use appropriate fixings according to wall finish.



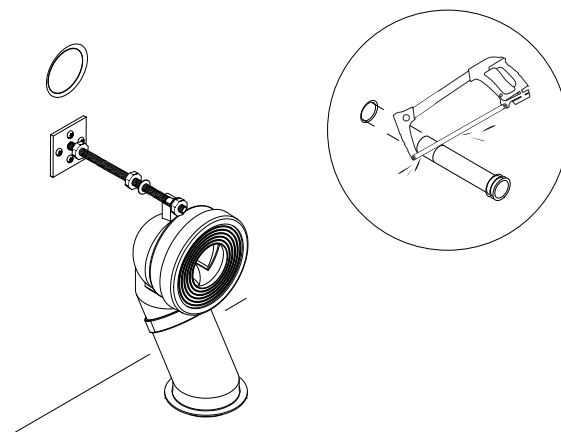
- ② Using a spanner, tighten nuts to fasten threaded rod to wall bracket and S trap adaptor.



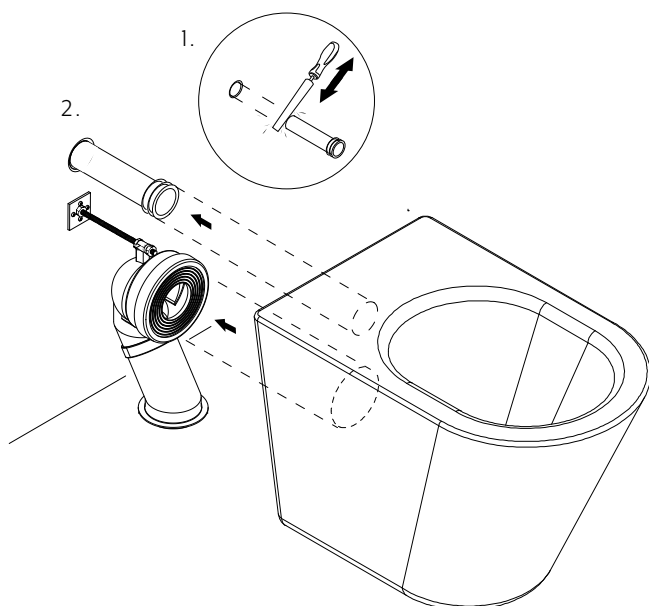
- ③ Place pan collar onto S trap adaptor outlet.



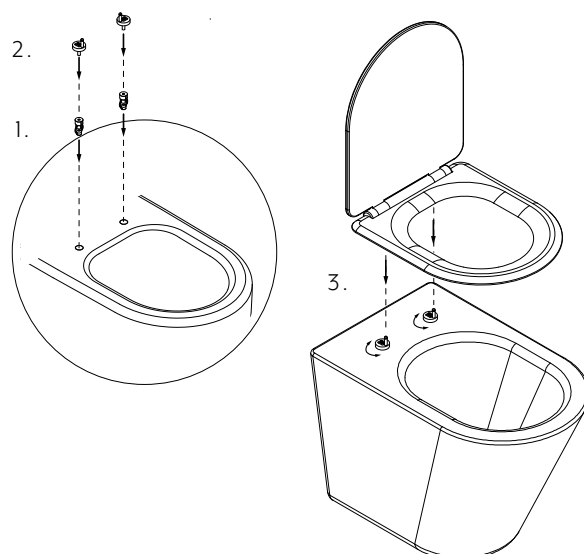
- ④ Cut flush pipe to suit.



- ⑤ 1. File flush pipe and insert into o-ring seal socket in wall.
2. Push pan onto S trap adaptor and flush pipe.



- ⑥ 1. Push expansion plugs into pan holes.
2. Use a screwdriver to attach hinges.
3. Adjust hinges and push seat on



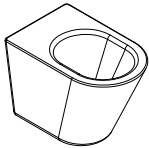
INSTALLATION GUIDE


Note: This product must be installed by a licensed plumber. This is a general installation guide - there are many factors involved that can alter the installation method. **AU/NZ:** For installations within Australia and New Zealand, this product must be installed in compliance with AS/NZS 3500. **UK:** For installations in the United Kingdom this product must be installed in compliance with the Water Supply (Water Fittings) Regulations and Water Supply (Water Fittings) (Scotland) Byelaws. **Other:** For installations outside these countries, this product must be installed in compliance with the standards in your respective country.





IN THE BOX


BOX 1



1x pan


2x screws



1x toilet seat



2x hinges

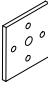

2x toilet clips



2x expansion plug


BOX 2



1x S trap adaptor


2x washers


1x wall bracket


3x nuts


1x threaded rod


4x screws