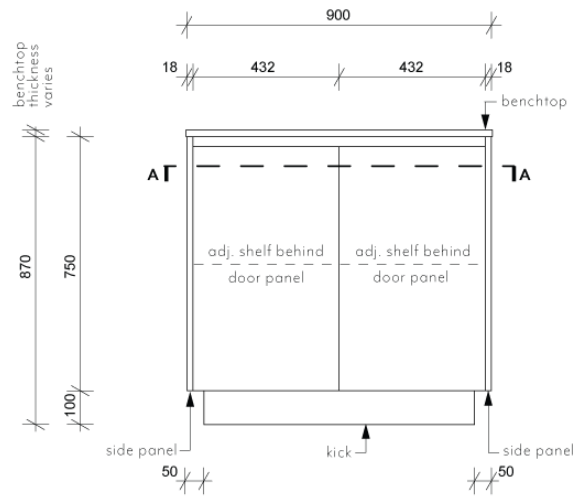
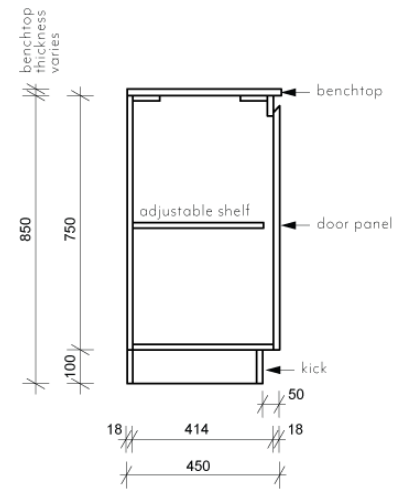


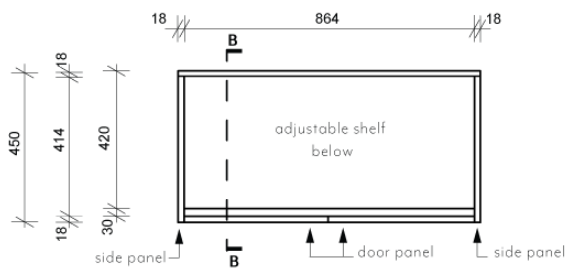
ARKI FREESTANDING VANITY - 900MM



FRONT VIEW



SIDE SECTION BB



TOP SECTION AA

Note: Dimensions are nominal measurements only

SPECIFICATIONS

INSTALLATION GUIDE

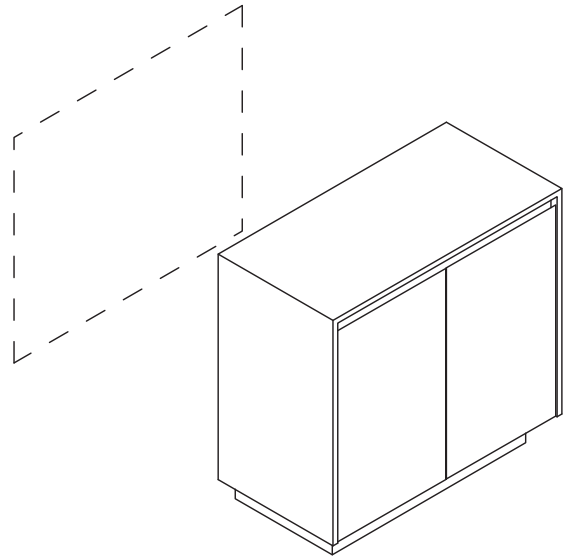
Note: This product must be installed by a licensed tradesperson.

This is a general installation guide - there are many factors that are involved that can alter the installation method.

This product install must comply with the standards in your respective country and must be adhered to by your licensed tradesperson.

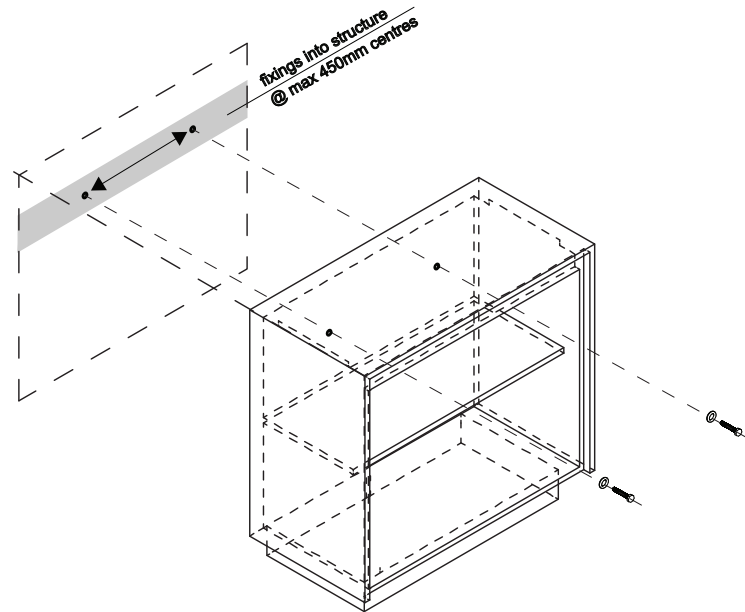
ABI

- 1 Check the desired position of vanity on floor.

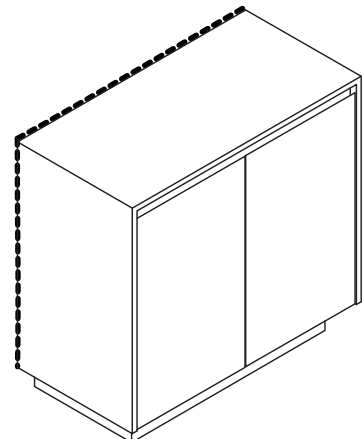


- 2 If correct position is suitable, mark out desired position. Drill holes through the back of vanity into structure within wall with a wood drill bit.

Note: ensure adequate fixings are fixed at maximum 450 centres into structure within wall.
ABI takes no responsibility if vanity is not fixed into wall structure.



- 3 Silicon top and sides of vanity if necessary.



Regularly clean with mild liquid detergent or soap and water.



DO NOT use cream cleaners or bleach. These substances are abrasive.



DO NOT use cleaning pads with abrasive surfaces as this may scratch the material.