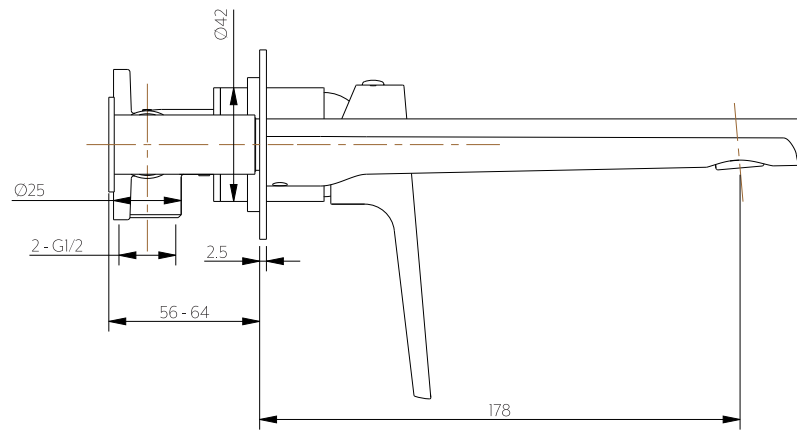


Front View



Side View



**Note:** Dimensions are nominal measurements only

## SPECIFICATIONS

RECOMMENDED USE	Domestic
MATERIAL	Solid Brass Ceramic Cartridge
TEMPERATURE RATING	Maximum continuous working temperature 75°C If the water temperature exceeds 75°C,an approved tempering valve must be fitted
PRESSURE RATING	Recommended minimum working pressure 150kPa Recommended maximum working pressure 500kPa Hot and cold water inlet pressure should be equal
SUITABLE HOT WATER UNITS	Storage tank: Yes Continuous Flow: Yes Gravity Feed: Not suitable

## STANDARDS

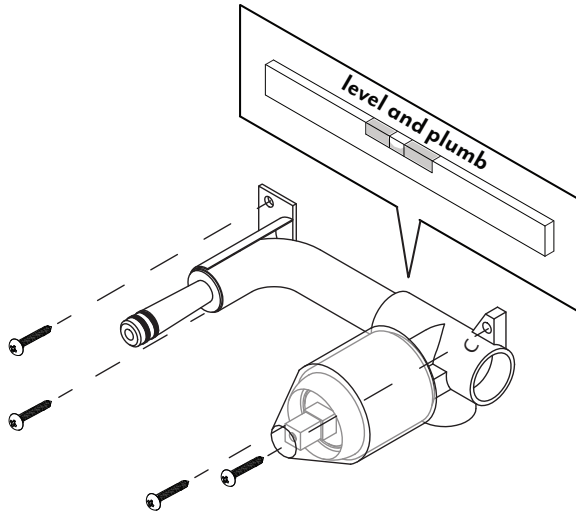
WELS 3 Star, 8L/min, T32403

# INSTALLATION GUIDE

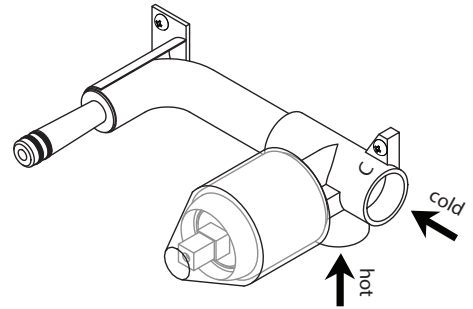
This product must be installed by a licensed plumber.  
This is a general installation guide - there are many factors that are involved that can alter the installation method.  
This product install must comply with AS/NZS 3500.



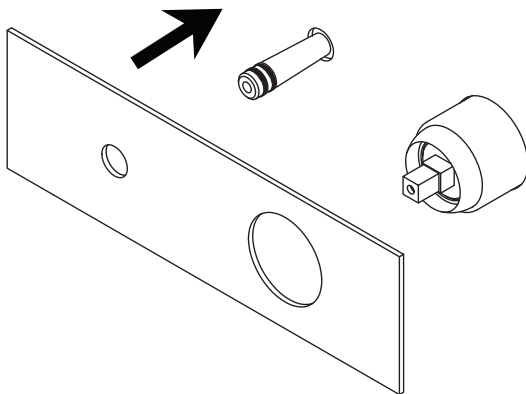
- 1 Fasten screws to secure mixer assembly into position.  
**Note:** Ensure mixer assembly is level and plumb.



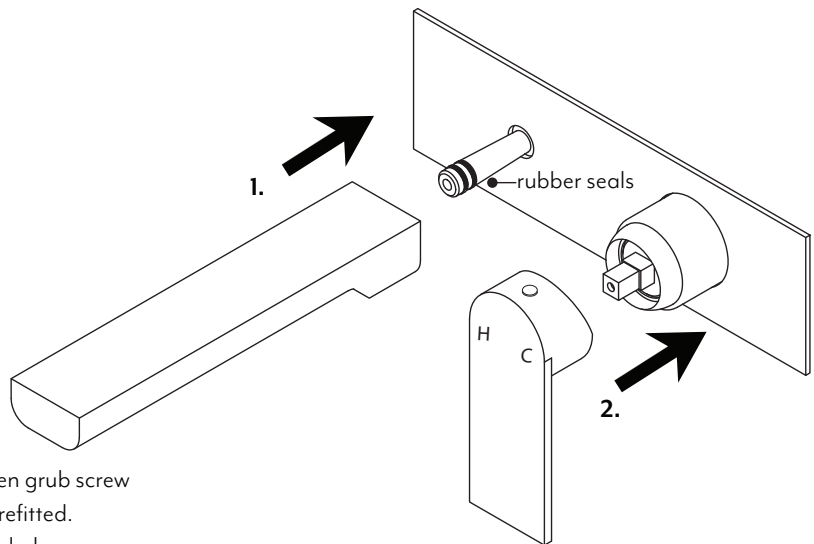
- 2 Connect to water supply & test for leaks.



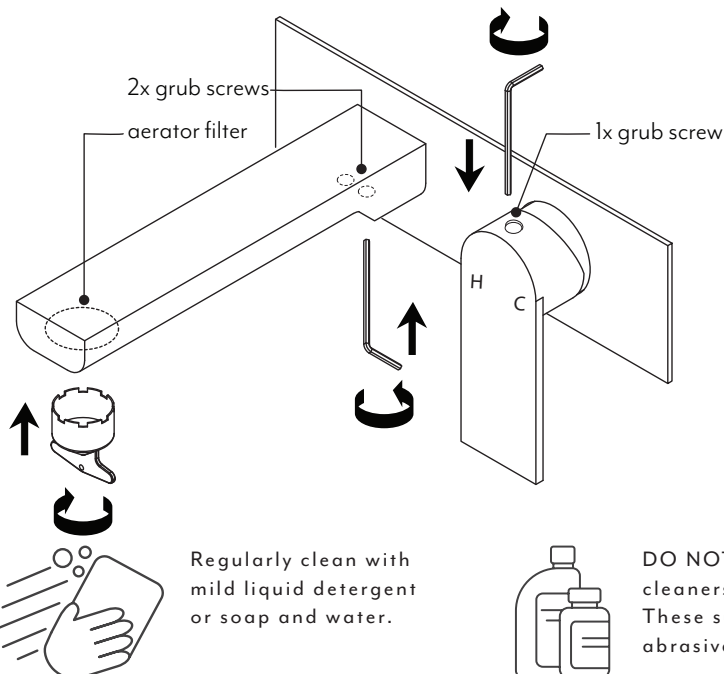
- 3 Create a 45mm and 15mm hole in cement sheet & tiles.  
**Note:** Use backplate as a guide for centre of hole locations.  
Remove protective cover & mount the backplate into position.



- 4 1. Fit spout to outlet ensuring spout firmly connects with outlet rubber seals.  
2. Mount mixer handle to mixer.



- 5 Fix handle by removing grub screw cap and tighten grub screw with allen key provided, ensure grub screw cap is refitted.  
For maintenance purposes an aerator key is provided.  
To switch aerator filters use key to unscrew and refit.



Regularly clean with mild liquid detergent or soap and water.



DO NOT use cream cleaners or bleach. These substances are abrasive.



DO NOT use cleaning pads with abrasive surfaces as this may scratch the material.

## IN THE BOX

