

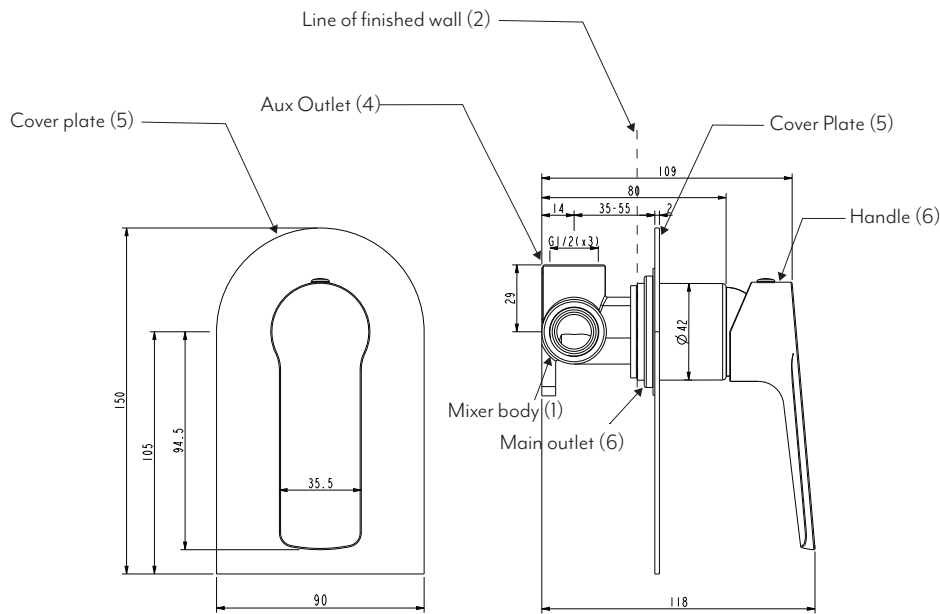
Note: Dimensions are nominal measurements only

SPECIFICATIONS

RECOMMENDED USE	Domestic
MATERIAL	Solid Brass Ceramic Cartridge
TEMPERATURE RATING	Maximum continuous working temperature 75°C If the water temperature exceeds 75°C,an approved tempering valve must be fitted
PRESSURE RATING	Recommended minimum working pressure 150kPa Recommended maximum working pressure 500kPa Hot and cold water inlet pressure should be equal
SUITABLE HOT WATER UNITS	Storage tank: Yes Continuous Flow: Yes Gravity Feed: Not suitable

INSTALLATION GUIDE

This product must be installed by a licensed plumber.
This is a general installation guide - there are many factors that are involved that can alter the installation method.
This product install must comply with AS/NZS 3500.



1 Using fixing points in mixer body (1). Fasten into place allowing for finished wall (2).

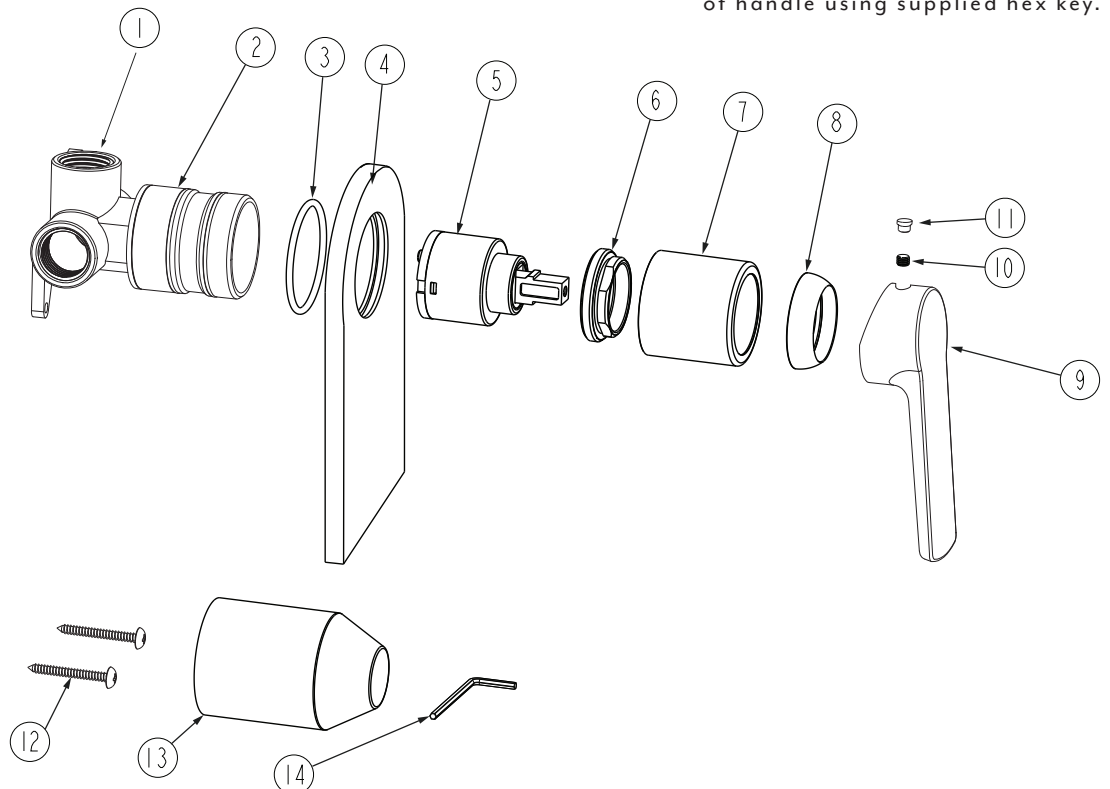
2 Connect hot & cold, aux outlet (4) & main outlet (3), test with pressure. The main outlet (3) will be the default outlet when water is first turned on (For example if water is to come out of the rain shower head by default the line of this fixture should be connected to main outlet).

3 When installing wall sheeting ensure hole cutout size does not exceed the coverplate (5) coverage area - Ensure all entry points around mixer body are sealed to prevent water entry.

4 Once wall sheeting is completed, slide the cover plate hard back to wall, fit handle (6) and tighten grommet screw on underside of handle using supplied hex key.

EXPLODED VIEW

- 1 - 2 Body
- 3 O Ring
- 4 Back Plate
- 5 Cartridge
- 6 Locking Nut
- 7 Body Sleeve
- 8 Dome
- 9 Handle
- 10 Grub Screw
- 11 Grub Screw Cover
- 12 Fixing Screws
- 13 Protective Case
- 14 Allen Key



Regularly clean with mild liquid detergent or soap and water.



DO NOT use cream cleaners or bleach. These substances are abrasive.



DO NOT use cleaning pads with abrasive surfaces as this may scratch the material.