

**Note:** Dimensions are nominal measurements only

## SPECIFICATIONS

### RECOMMENDED USE

Domestic

### MATERIAL

Solid Brass

### TEMPERATURE RATING

Maximum continuous working temperature 75°C  
If the water temperature exceeds 75°C, an approved tempering valve must be fitted

### PRESSURE RATING

Recommended minimum working pressure 150kPa  
Recommended maximum working pressure 500kPa  
Hot and cold water inlet pressure should be equal

### SUITABLE HOT WATER UNITS

Storage tank: Yes  
Continuous Flow: Yes  
Gravity Feed: Not suitable

### STANDARDS

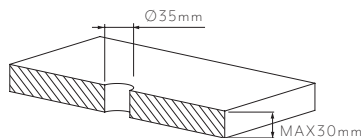
WELS Star Rating 5 Star - Flow Rate 6L/Min  
Registration No. T36498

# INSTALLATION GUIDE

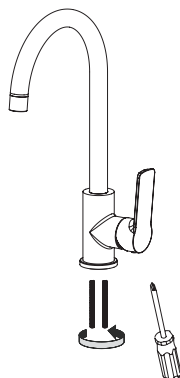
Note: This product must be installed by a licensed plumber.  
This is a general installation guide - there are many factors that are involved that can alter the installation method.  
This product install must comply with AS/NZS 3500.



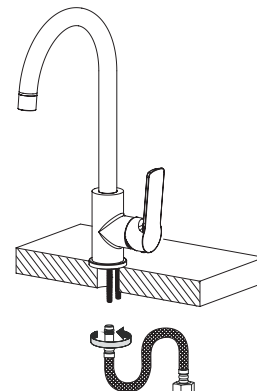
- 1 Mark hole in bench top at desired position and drill 35mm hole.



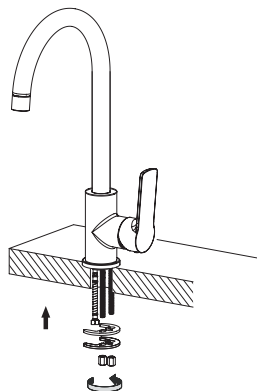
- 2 Fix the bolts to the bottom of the body and tighten with a screwdriver.



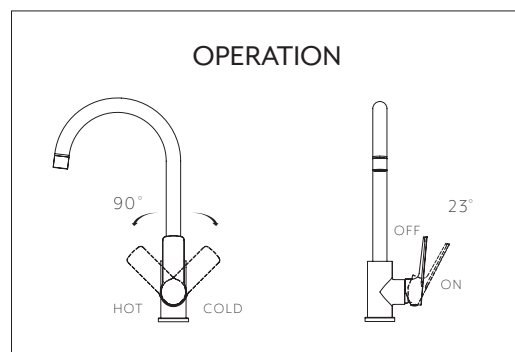
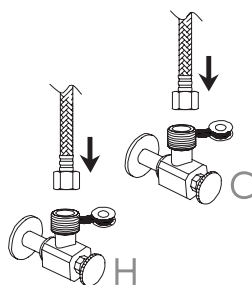
- 3 Connect the flexible hoses.



- 4 Place the mixer connections through the hole in bench. Pass the horseshoe plates over the bolts on the underside of bench, fasten the nuts and tighten.

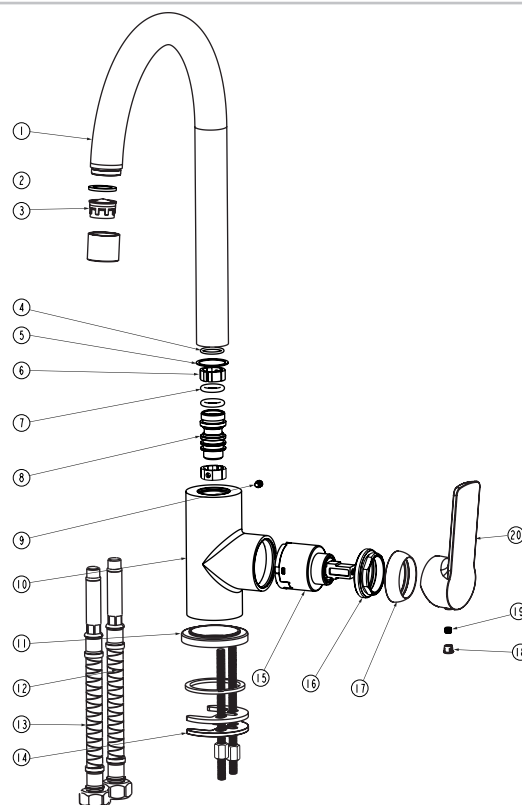


- 5 Attach the two flexible hoses to water supply.



## EXPLODED VIEW

- Item Description Code
- 1 Spout
  - 2 Rubber O-Ring
  - 3 Aerator
  - 4-8 Outlet & Connections
  - 9 Grub Screw
  - 10 Body
  - 11 Dress Ring
  - 12-13 Flexible Hoses
  - 14 Horse Shoe Plate
  - 15 Cartridge
  - 16 Locking Nut
  - 17 Dome
  - 18 Cap
  - 19 Grub Screw
  - 20 Handle



Regularly clean with mild liquid detergent or soap and water.



DO NOT use cream cleaners or bleach. These substances are abrasive.



DO NOT use cleaning pads with abrasive surfaces as this may scratch the material.