

Note: Dimensions are nominal measurements only

SPECIFICATIONS

RECOMMENDED USE

Domestic

MATERIAL

HDPE Plastic

TEMPERATURE RATING

Maximum continuous working temperature 75°C
If the water temperature exceeds 75°C, an approved tempering valve must be fitted

PRESSURE RATING

Recommended minimum working pressure 150kPa
Recommended maximum working pressure 500kPa
Hot and cold water inlet pressure should be equal

INSTALLATION

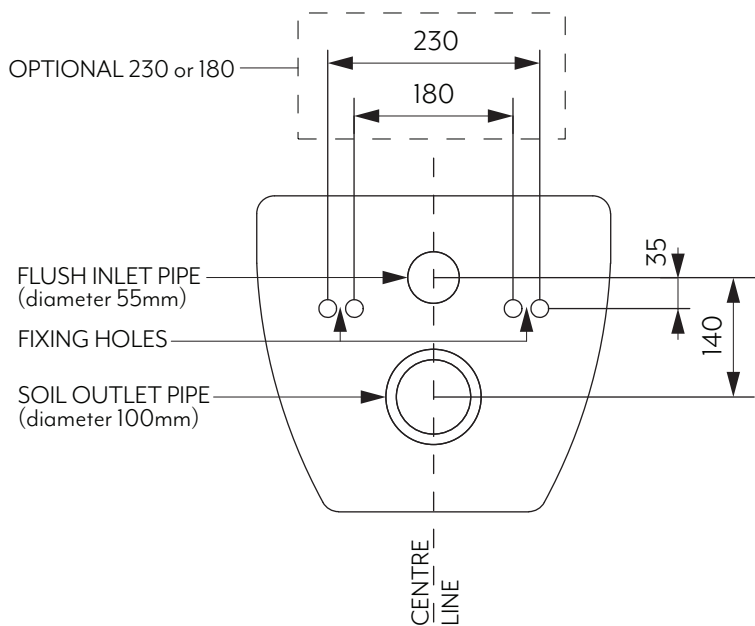
Wall Mounted

STANDARDS

WELS 4 Star, Half Flush 2.8 Litres, Full Flush 4.6 Litres
Average Flush 3.2 Litres, L07248

REQUIRED TOILET SETOUT

Note: This cistern can only be fitted with a wall hung toilet which corresponds with the following setout.



INSTALLATION GUIDE

1. Please adhere to the following installation instructions.
We shall not be responsible for failures and loss that are contributed to improper installation.
2. Please confirm the fixation location of cistern prior to installation and obtain the finished floor surface. Draw FFL on installation wall and follow it as baseline from ZERO (0) level.
3. The instructions have been composed based on the latest product specifications. We reserve the right to make modifications to the packaging and specifications without providing prior notification

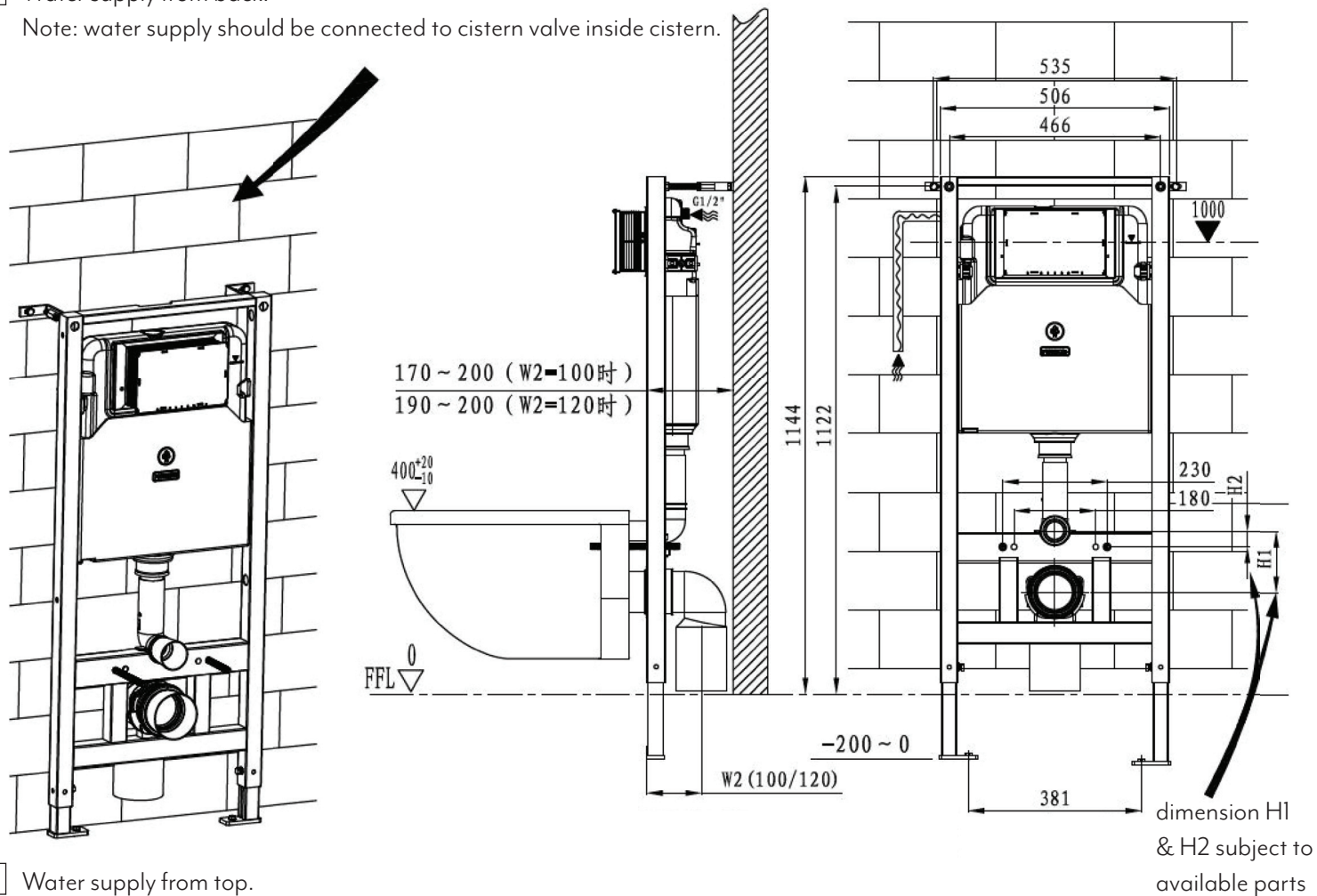
PARTS LIST

No.	Description	Qty	Function
1	Appropriate Fixings	4	Mounting of frame & wall bracket
2	Wall Bracket	2	Fixation of frame
3	Cistern Valve	1	Fill valve inlet and shut-off
4	Cistern Cover	1	Airproof tank and mounting of locking bracket
5	Socket Head Screw	2	Mounting of frame and locking into wall bracket
6	Plastic Holder	1	To reserve space for installation of actuator at wall building
7	Plastic Holder Cover	1	To prevent dust and impurities into tank at wall building
8	Connecting Screw	1	Water inlet to ceramic bowl
9	Protective Cover	2	To protect connecting screw at wall building
10	Ceramic bowl fixings	1	To mount ceramic bowl
11	Straight Tube	1	To join cistern into ceramic bowl
12	Connecting Pipe	1	(cutting in accordance with wall thickness)
13	Piping Stopper	1	To reserve space for straight tube and connecting pipe.
14	Draining Syphon	1	To discharge liquid and solid waste from ceramic bowl
15	Draining Syphon Holder	1	To mount draining syphon
16	Mounting Bracket	1	

1 General dimensions and water supply drawings

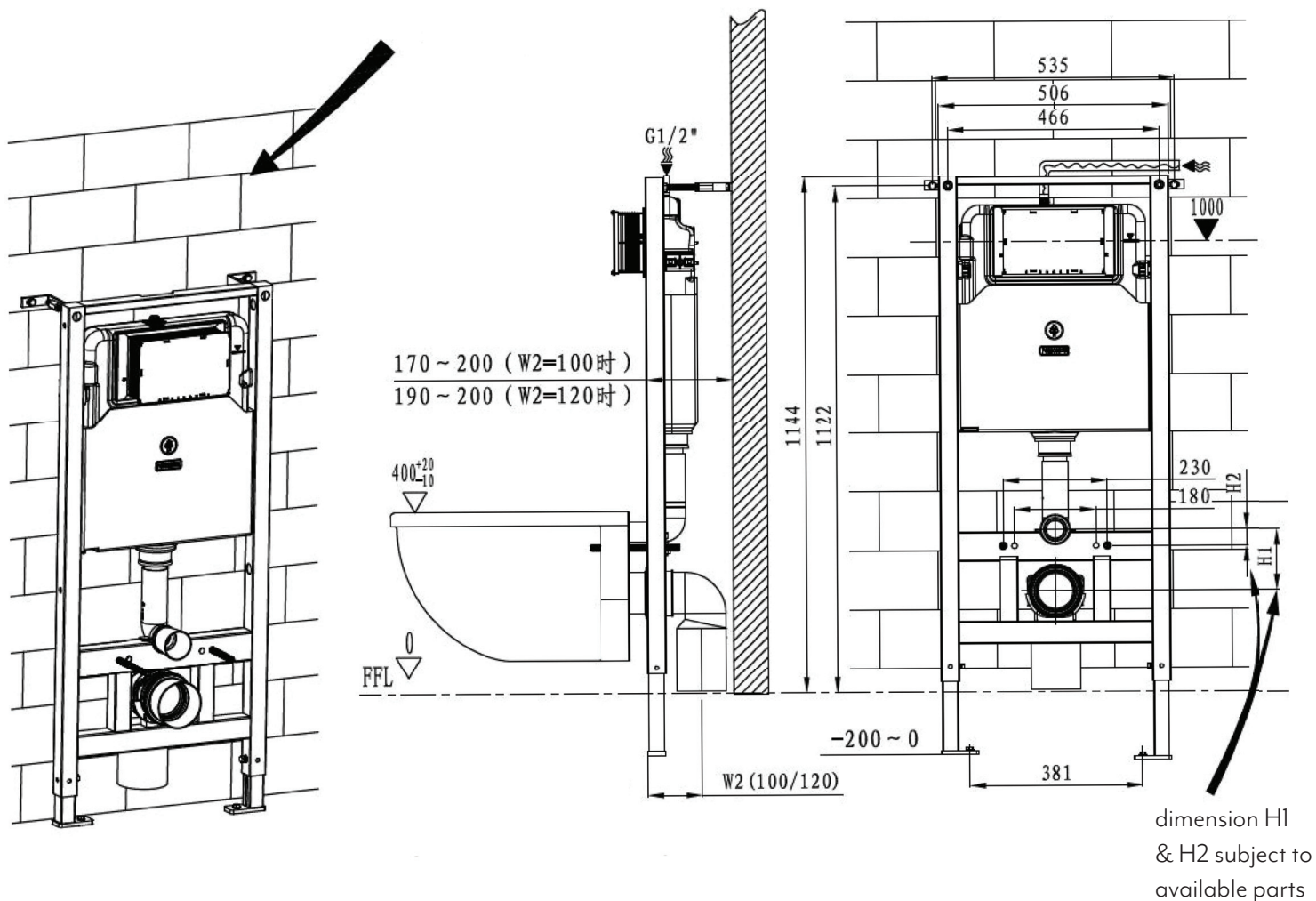
1 Water supply from back.

Note: water supply should be connected to cistern valve inside cistern.

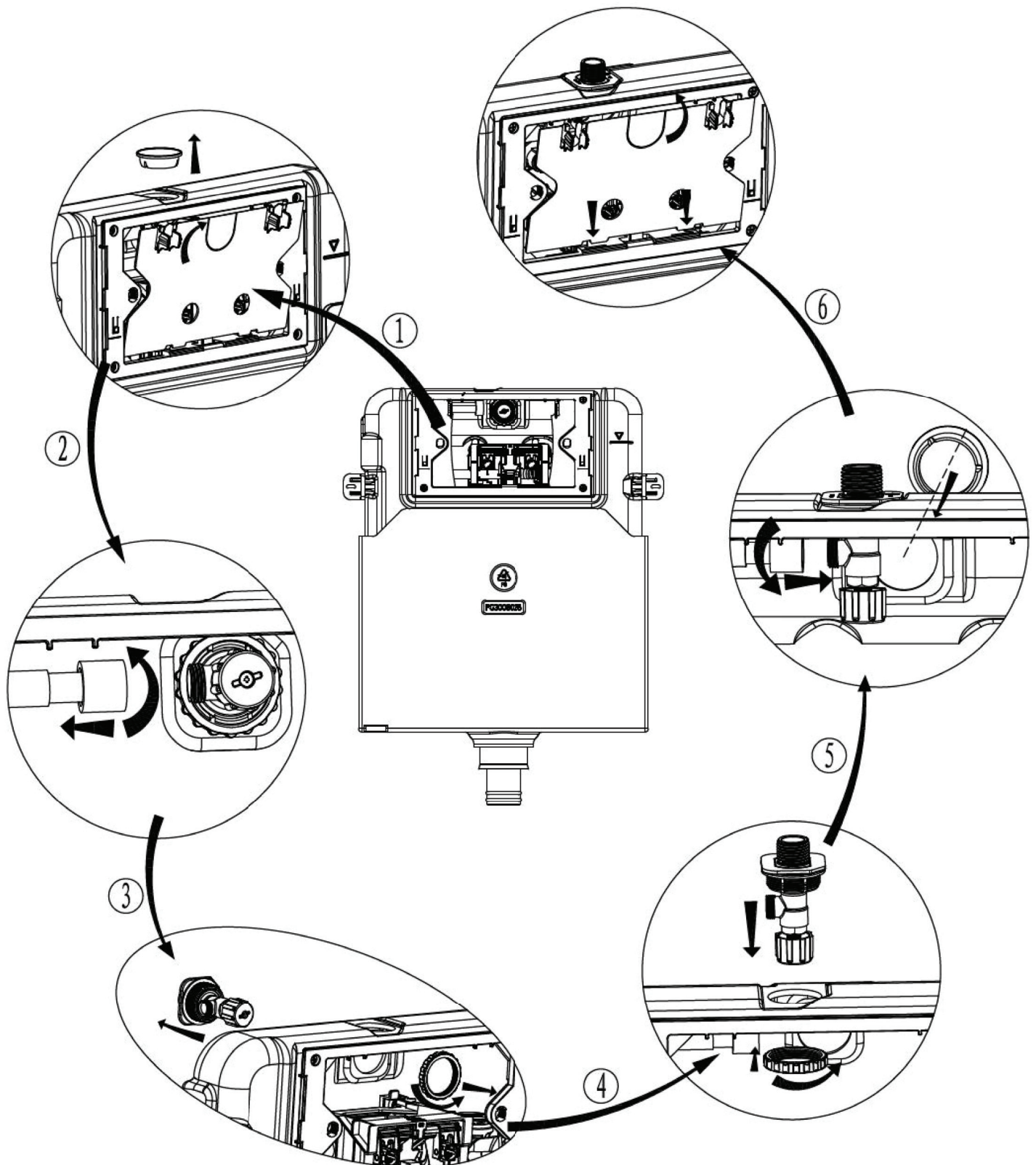


2 Water supply from top.

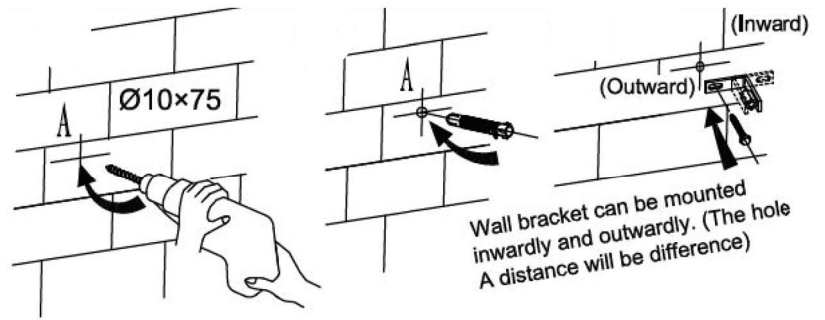
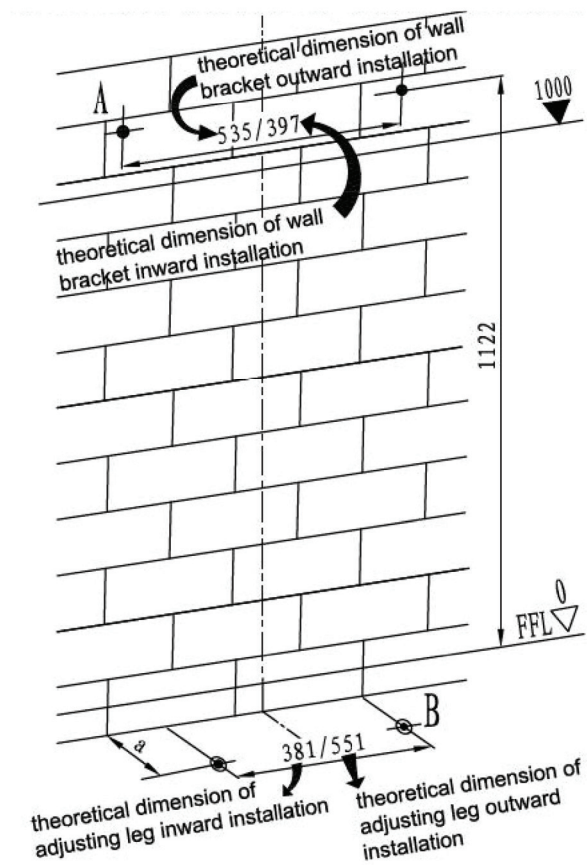
Note: water supply should be connected to angle valve inside cistern.



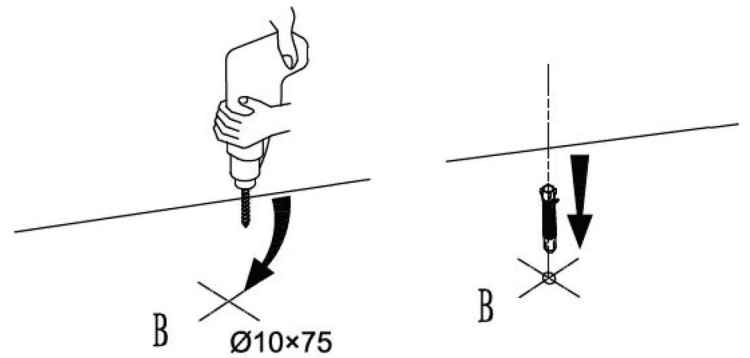
Note: In the case where back water supply is not feasible in installation,
switch to top water supply as per drawing below;



② Drill holes into structural wall or frame and floor and fix appropriate fixings.
Note: example shown is masonry.

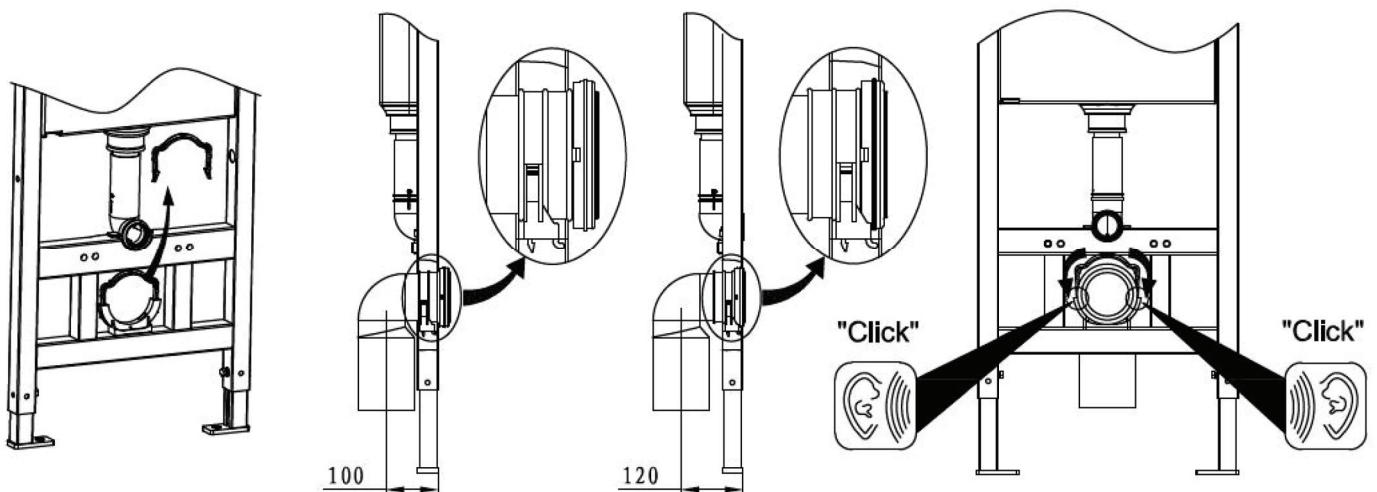


- 1 drill Ø 10mm by 75mm deep hole
- 2 Insert expansion screw
- 3 fix wall bracket into hole



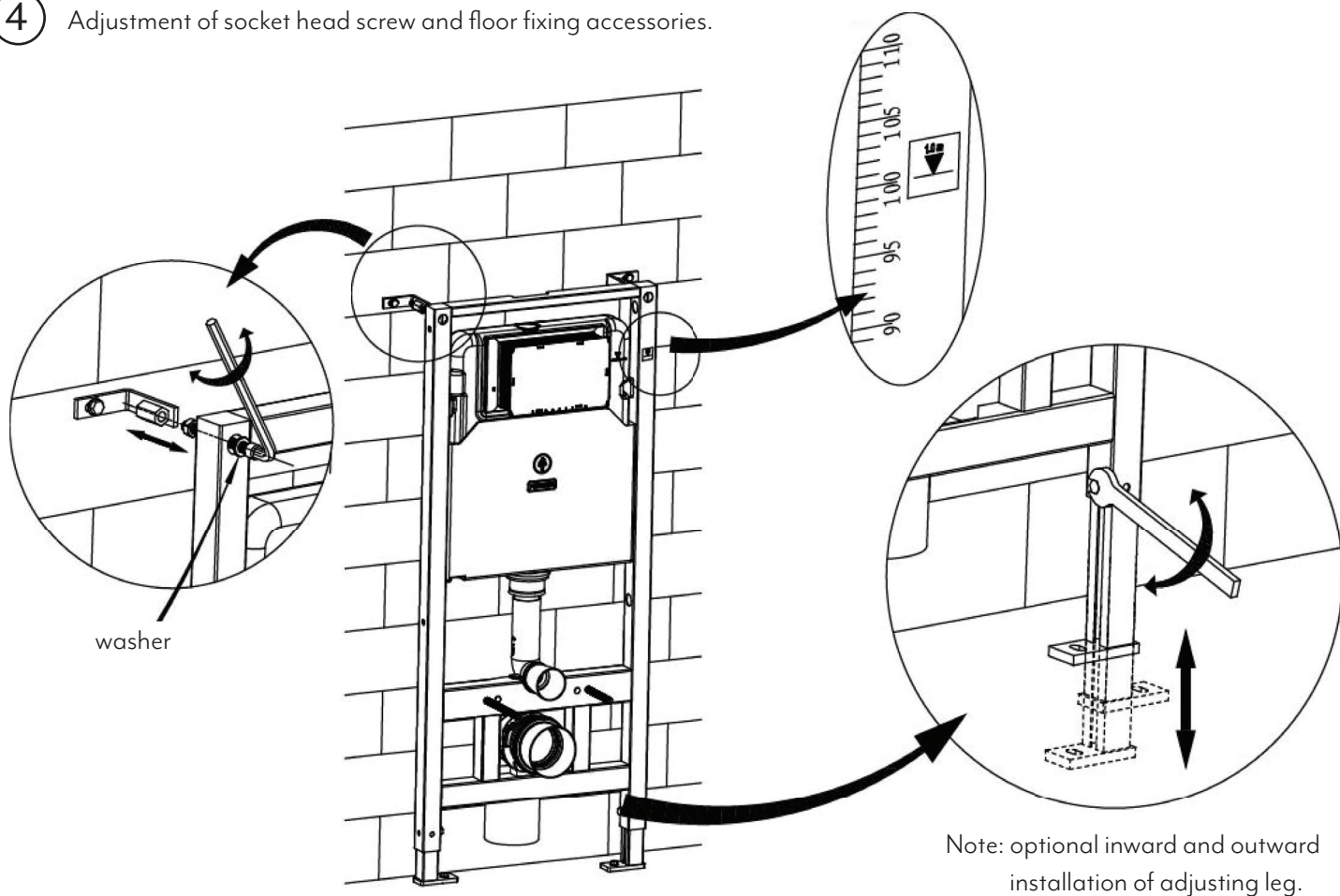
- 1 drill Ø 10mm by 75mm deep hole
 - 2 Insert expansion screw

③ Installation of draining syphon

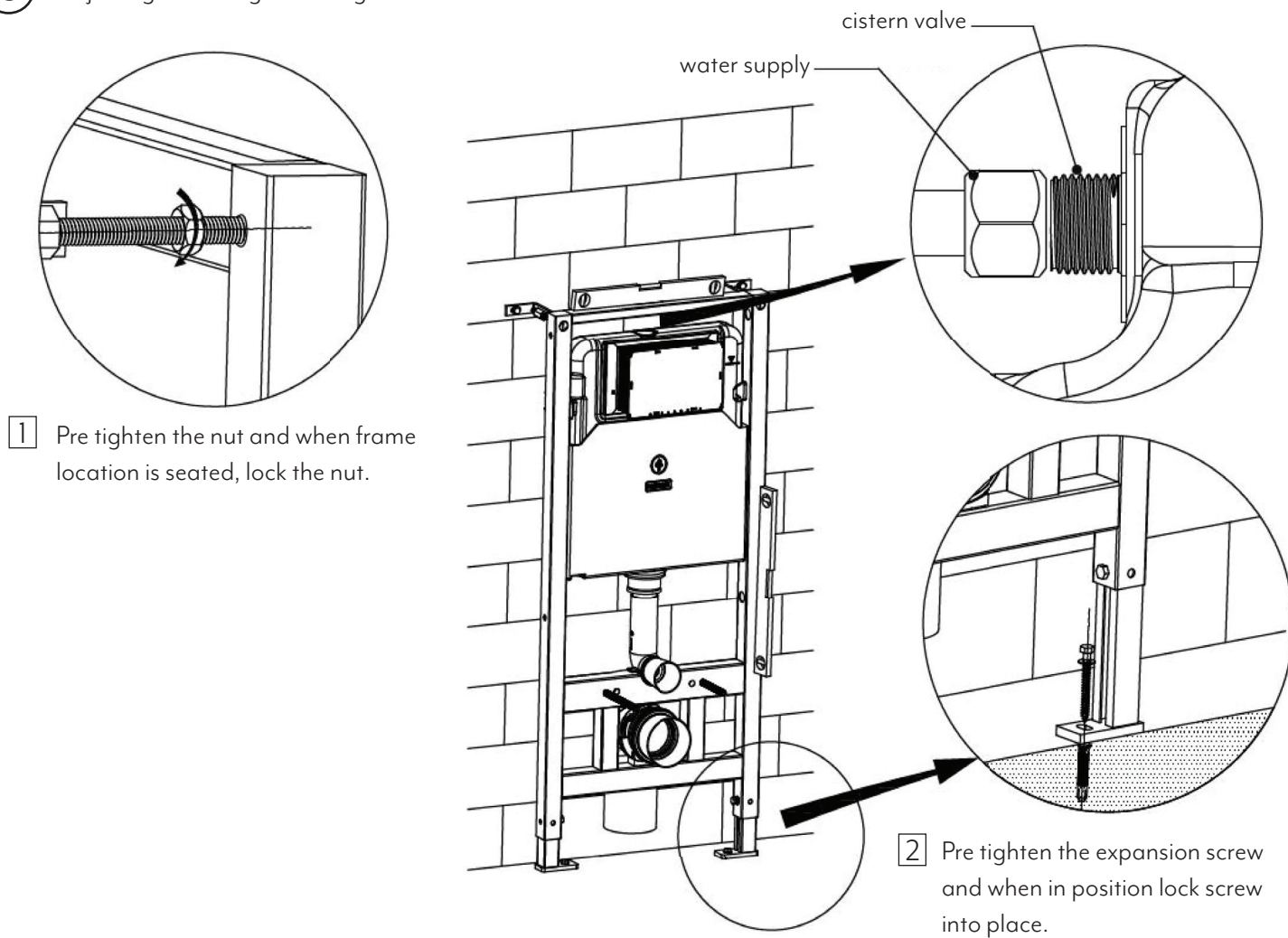


- 1 Remove the mounting bracket
- 2 Mount draining syphon (optional distance 120 or 100)
- 3 Fasten the mounting bracket

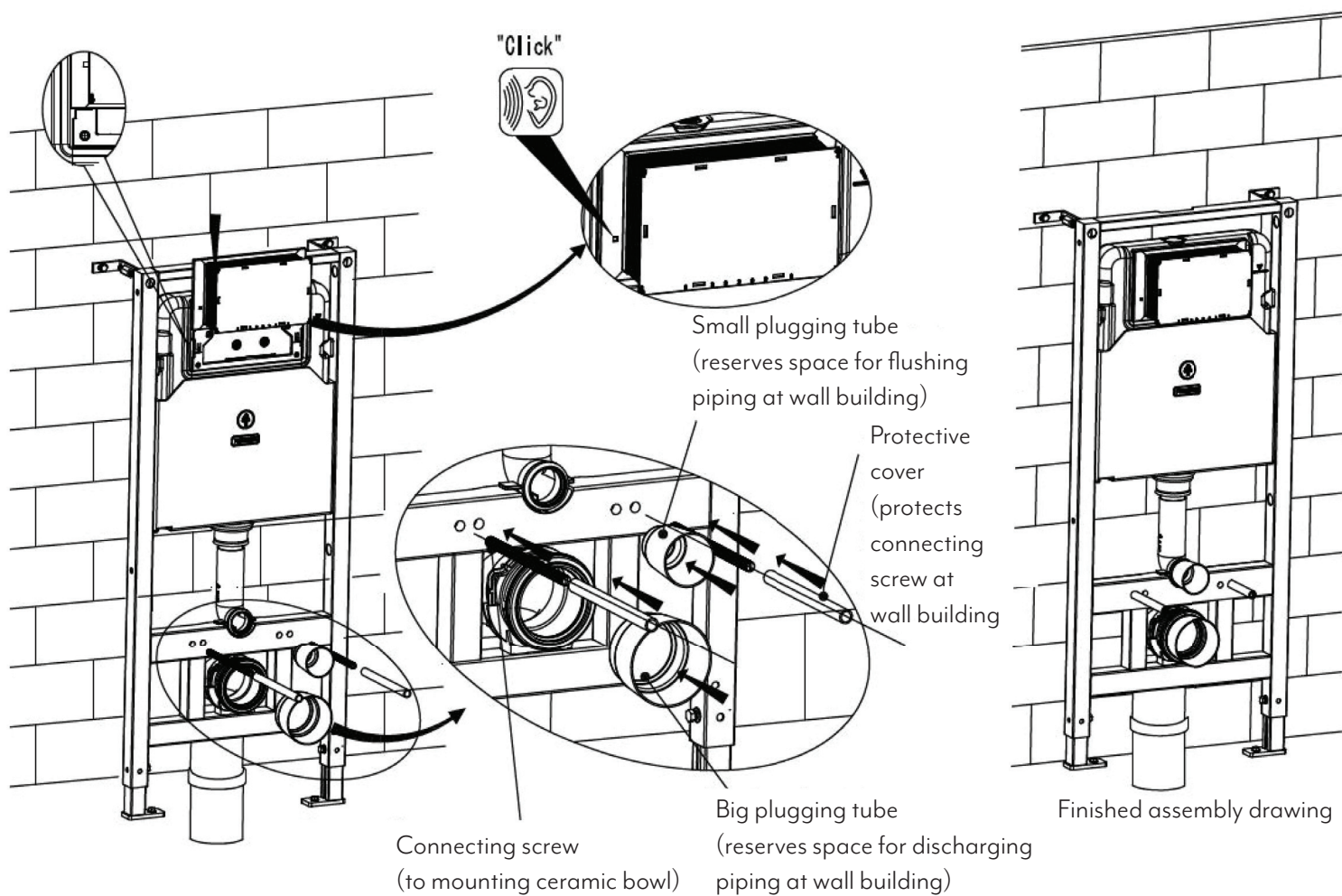
④ Adjustment of socket head screw and floor fixing accessories.



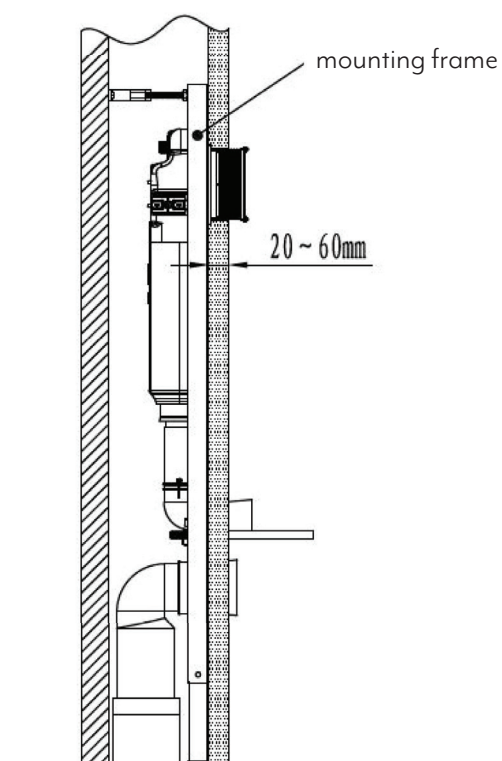
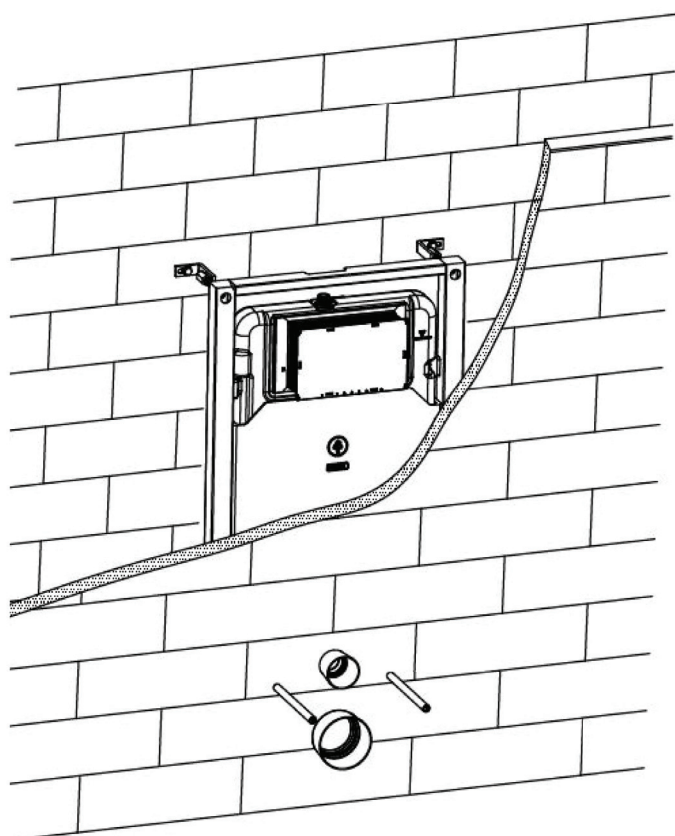
⑤ Adjusting and fixing mounting frame.



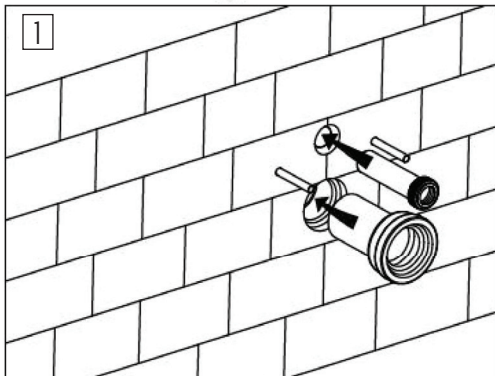
6 Mounting of installation accessories



7 Wall thickness range 20-60mm (from frame outside to finished wall)

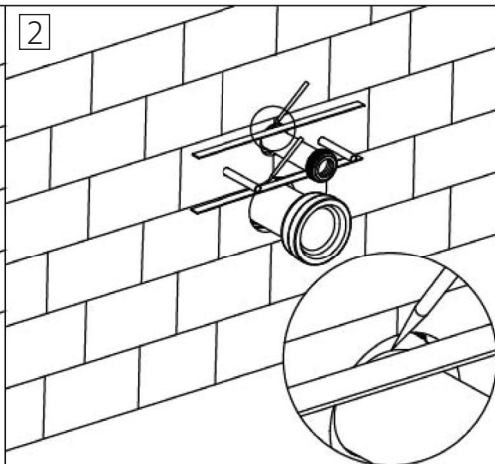


1



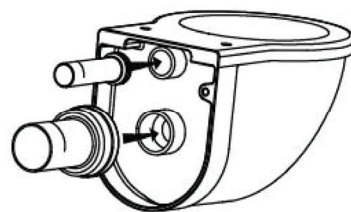
Fully insert the straight tube into the cistern flushing outlet and the connecting pipe into discharging outlet.

2



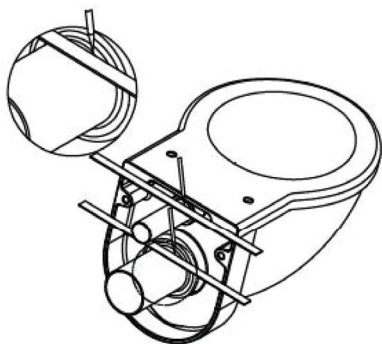
Draw lines as per image below.

3



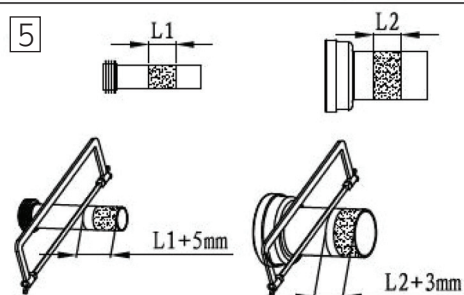
Apply lubricant on rubber washers of straight tube and connecting pipe. Insert both items into ceramic holes.

4



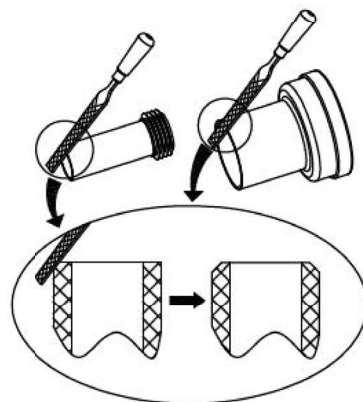
Draw lines as per drawing below.

5



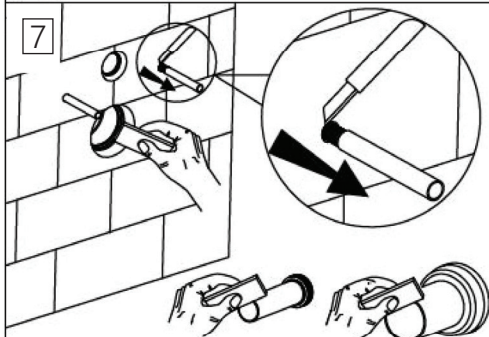
L1 & L2 is the distance between the two lines on the straight tube. Cut the straight tube and connecting pipe as per above drawing.

6



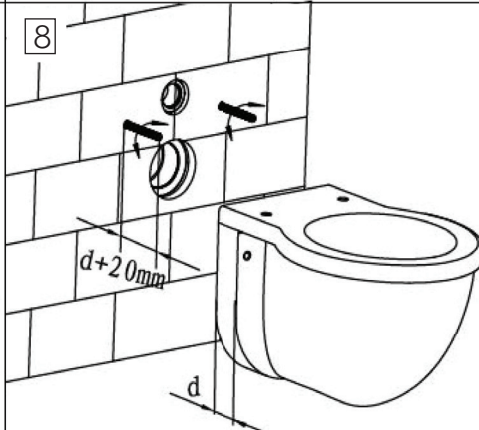
Use a file to chamfer the cut edge of the pipe.

7



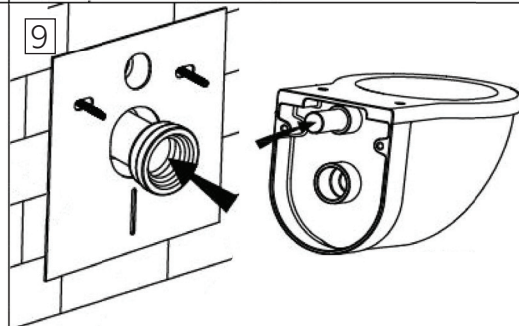
Cut the protection sleeve outside of the wall with a knife. Apply lubricant on joint surface of straight tube and connecting pipe.

8



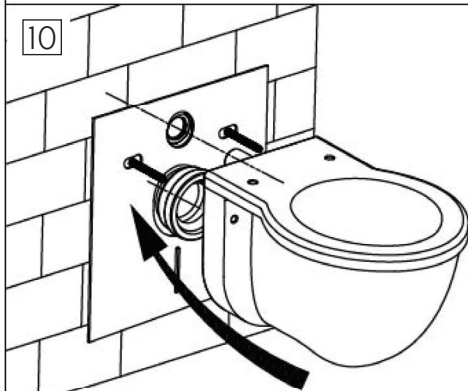
Adjust length of connecting bolt to be $d+20\text{mm}$.

9



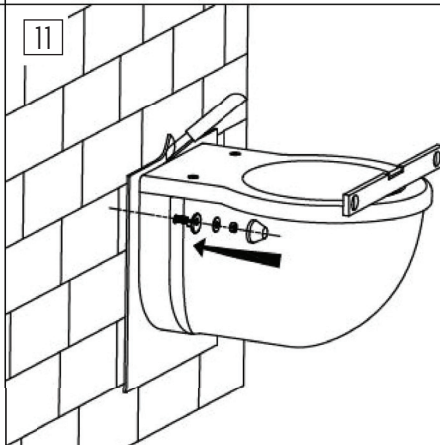
Fully insert connecting pipe into discharging outlet and straight tube into ceramic hole.

10



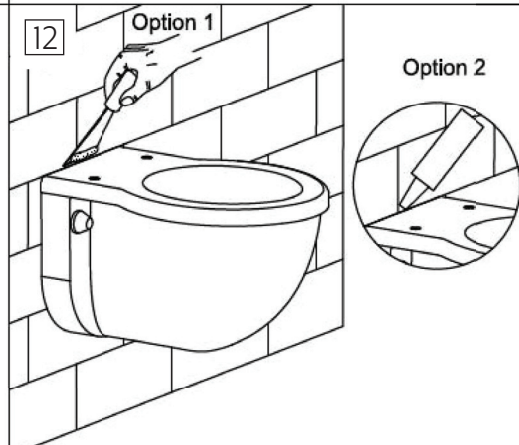
Mount the ceramic bowl.

11



Fix the ceramic bowl using screws and remove the extra pad.

12



Seal perimeter of pan with silicon.

9 Internal flushing mechanism assembly drawing for maintenance purposes.

