

Note: Dimensions are nominal measurements only

SPECIFICATIONS

RECOMMENDED USE

Domestic

MATERIAL

HDPE Plastic/Steel

TEMPERATURE RATING

Maximum continuous working temperature 75°C
If the water temperature exceeds 75°C, an approved tempering valve must be fitted

INSTALLATION

Wall Mounted

STANDARDS

WELS 4 star, Full Flush 4.5L, Half Flush 3.0L, Average Flush 3.3L, L08438

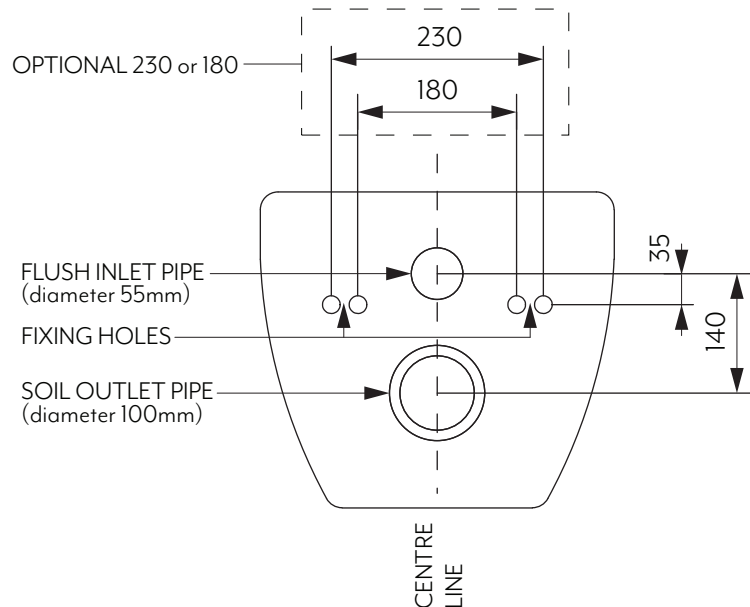
INSTALLATION GUIDE

Note: This product must be installed by a licensed plumber. This is a general installation guide - there are many factors involved that can alter the installation method. **AU/NZ:** For installations within Australia and New Zealand, this product must be installed in compliance with AS/NZS 3500. **UK:** For installations in the United Kingdom this product must be installed in compliance with the Water Supply (Water Fittings) Regulations and Water Supply (Water Fittings) (Scotland) Byelaws. **Other:** For installations outside these countries, this product must be installed in compliance with the standards in your respective country.



REQUIRED TOILET SETOUT

Note: This cistern can only be fitted with a wall hung toilet which corresponds with the following setout.



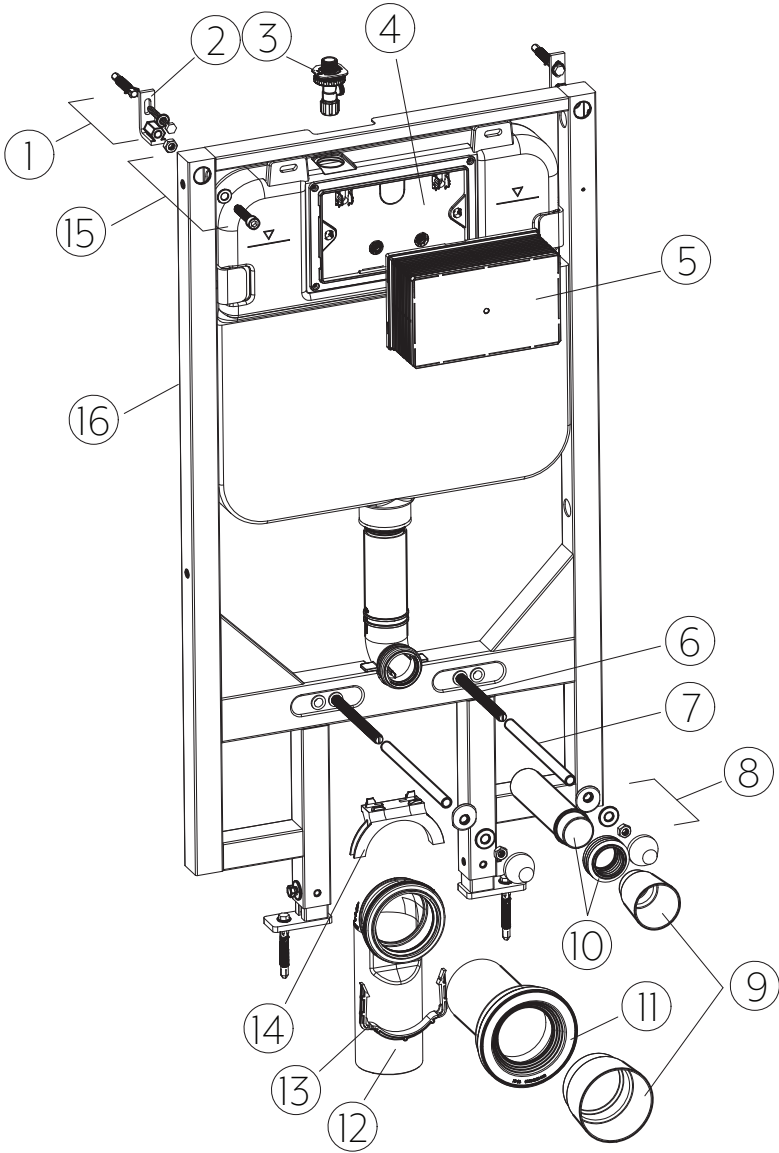
Please adhere to the following installation instructions.

We shall not be responsible for failures and loss that are contributed to improper installation.

1. Please confirm the fixation location of cistern prior to installation and obtain the finished floor surface. Draw FFL(Finished Floor) on installation wall and follow it as baseline from ZERO (0) level.
2. The instructions have been composed based on the latest product specifications. We reserve the right to make modifications to the packaging and specifications without providing prior notification.

PLEASE NOTE

1. FFL ∇ = Finished floor.
2. Units = mm
3. Please wait to receive product prior to preparing installation location to verify and confirm installation requirements and set outs.

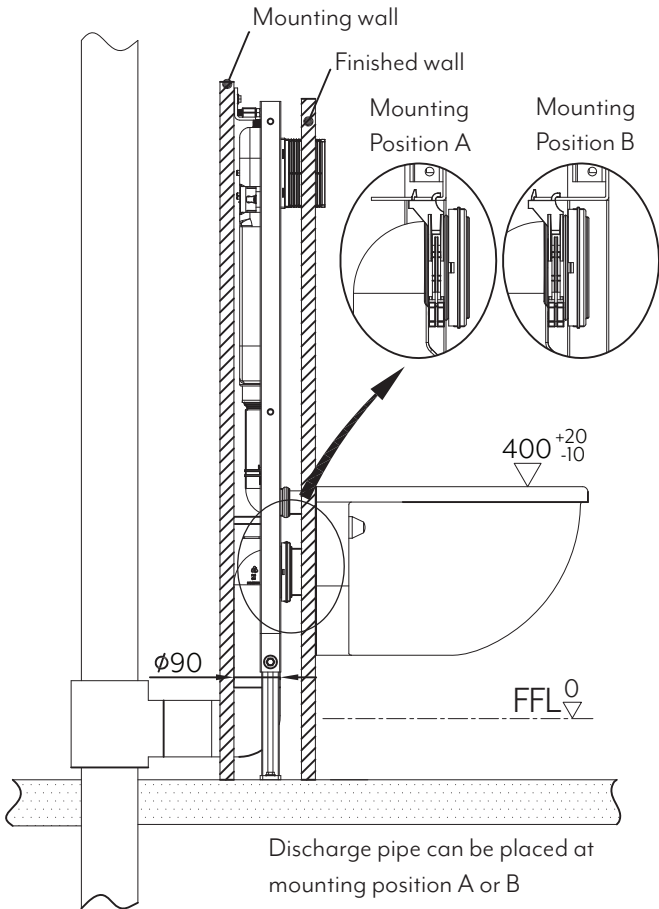


No.	Description	Qty	Function
1	Expansion screw	4	Mounting of frame & wall bracket
2	Wall Bracket	2	Fixation of frame
3	Cistern Valve	1	Fill valve inlet and shut-off
4	Cistern Cover	1	Airproof tank and mounting of locking bracket
5	Plastic Holder	1	To reserve space for installation of actuator at wall building
6	Connecting Screw	2	To mount ceramic bowl
7	Protective Cover	2	To protect connecting screw at wall building
8	Ceramic bowl fixings	2	To mount ceramic bowl
9	Piping Stopper	2	To reserve space for straight tube and connecting pipe.
10	Straight Tube	1	To join cistern into ceramic bowl (cutting in accordance with wall thickness)
11	Connecting Pipe	1	
12	Discharge Pipe	1	To discharge liquid and solid waste from ceramic bowl
13	Mounting Bracket	1	To mount draining syphon
14	Discharge Pipe Holder	1	
15	Socket Head Screw	2	Mounting of frame and locking into wall bracket
16	Frame and Cistern	1	Install structure

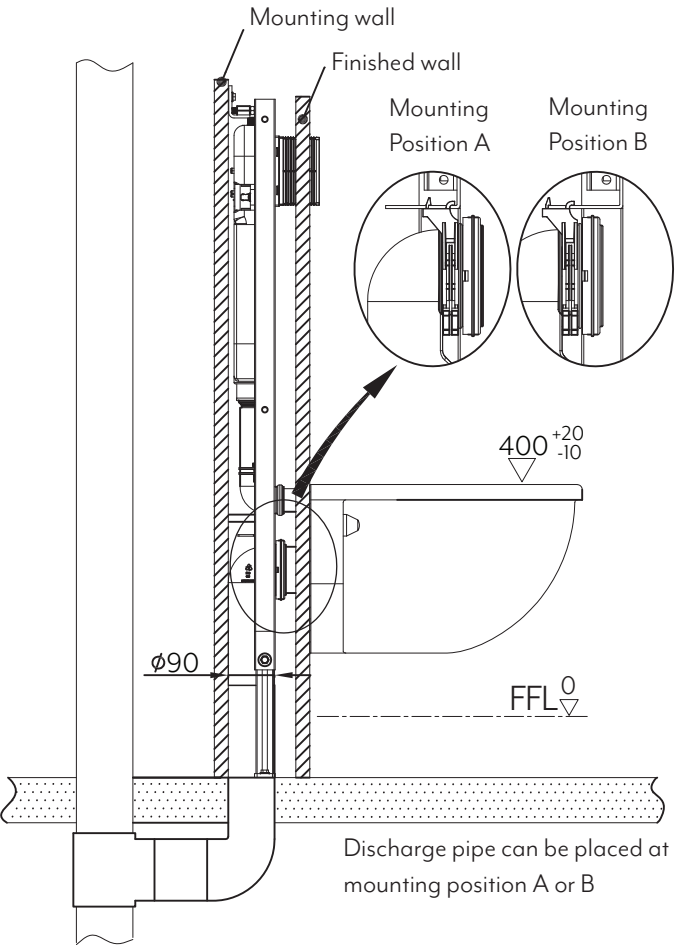
DRAINAGE SYSTEM LAYOUT

The following illustrations depict 3 different installation systems for the drain pipe. Please ensure the drainage outlet position falls into the below systems to ensure compatibility.

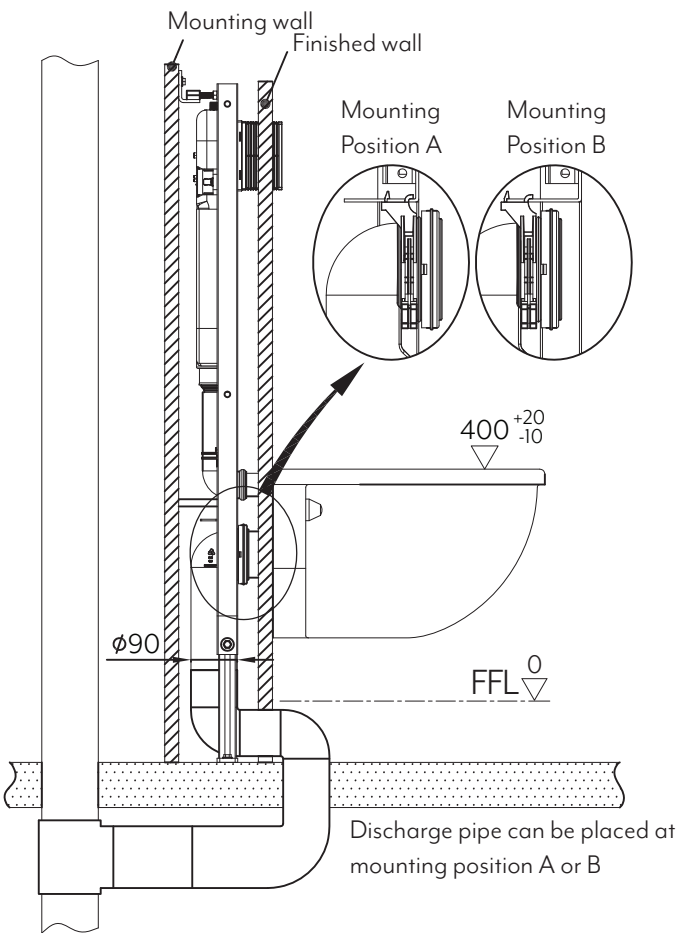
OPTION 1



OPTION 2



OPTION 3

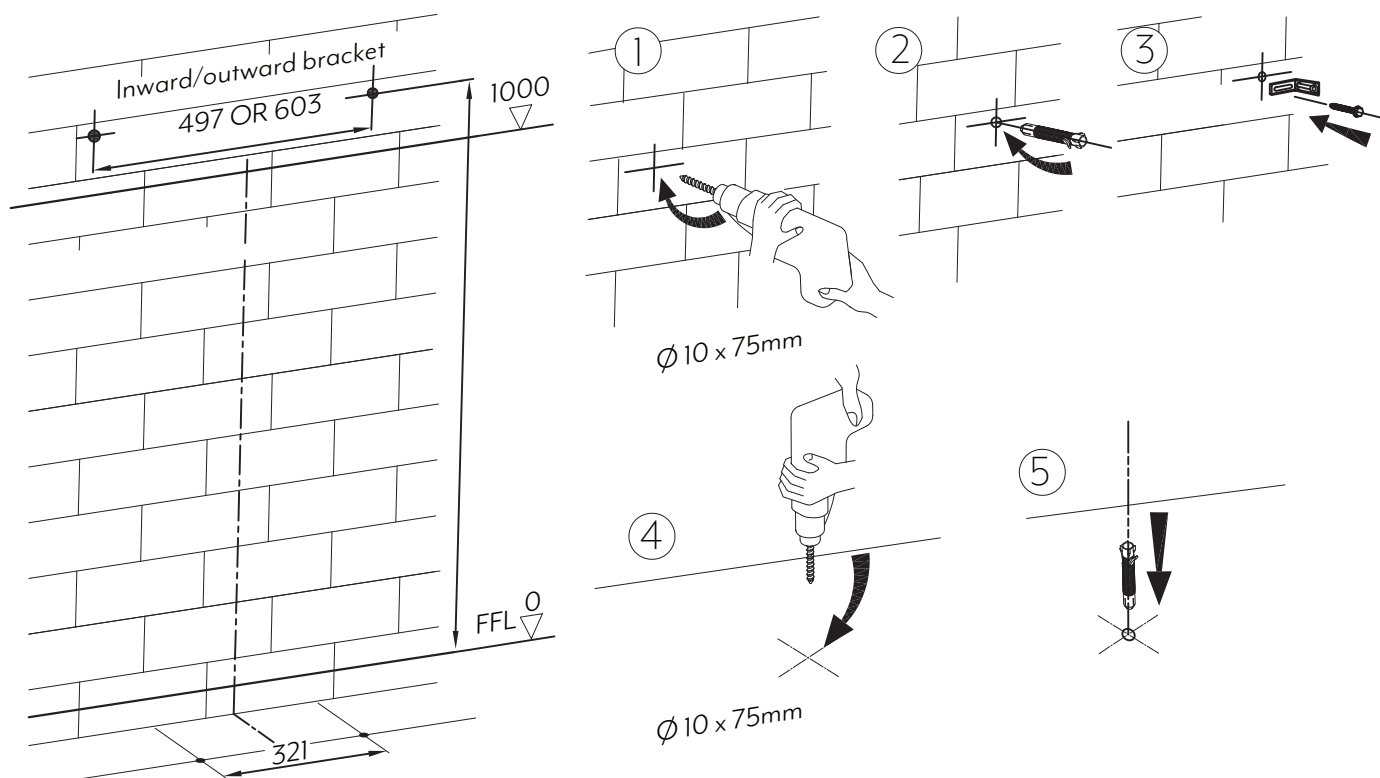


INSTALLATION GUIDE

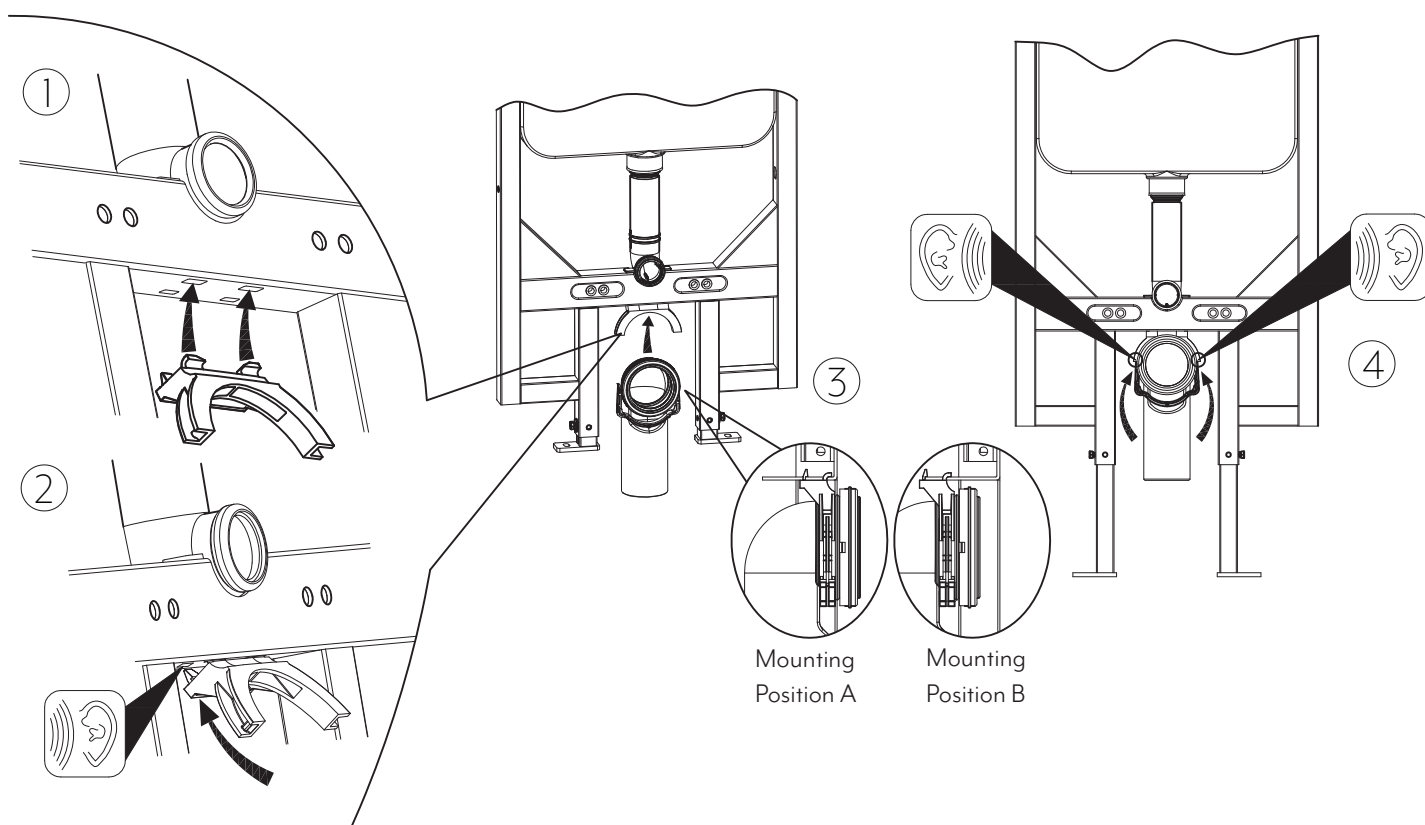
Note: This product must be installed by a licensed plumber. This is a general installation guide - there are many factors involved that can alter the installation method. **AU/NZ:** For installations within Australia and New Zealand, this product must be installed in compliance with AS/NZS 3500. **UK:** For installations in the United Kingdom this product must be installed in compliance with the Water Supply (Water Fittings) Regulations and Water Supply (Water Fittings) (Scotland) Byelaws. **Other:** For installations outside these countries, this product must be installed in compliance with the standards in your respective country.

ABI
INTERIORS

- 1 Fix frame and cistern to mounting structure.
Please Note: Wall bracket can be located facing inward or outward. Both dimensions are provided below.



- 2 Install draining syphon by first installing the pipe holder, mounting the discharge pipe in either position A or B and fastening holder.

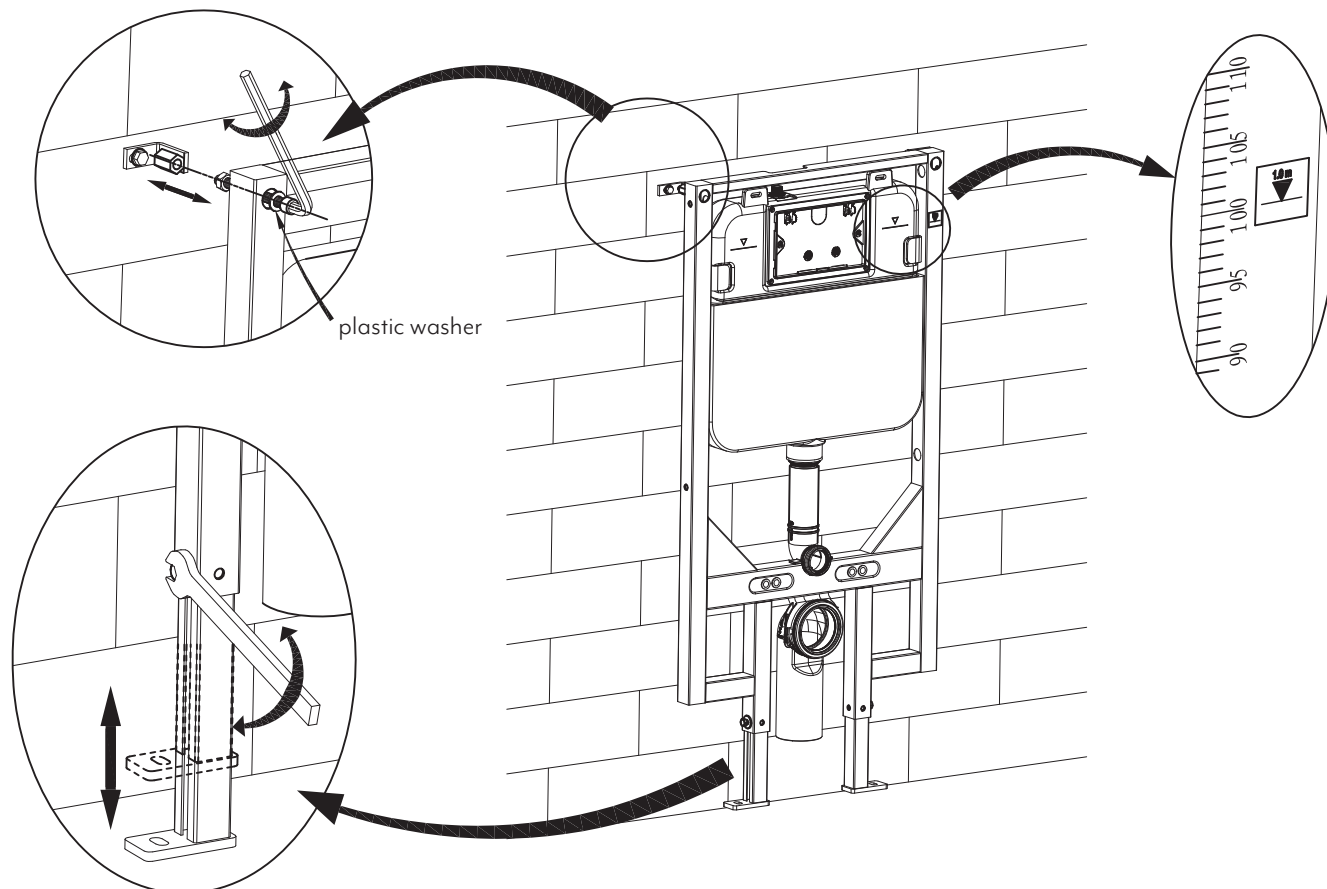


INSTALLATION GUIDE

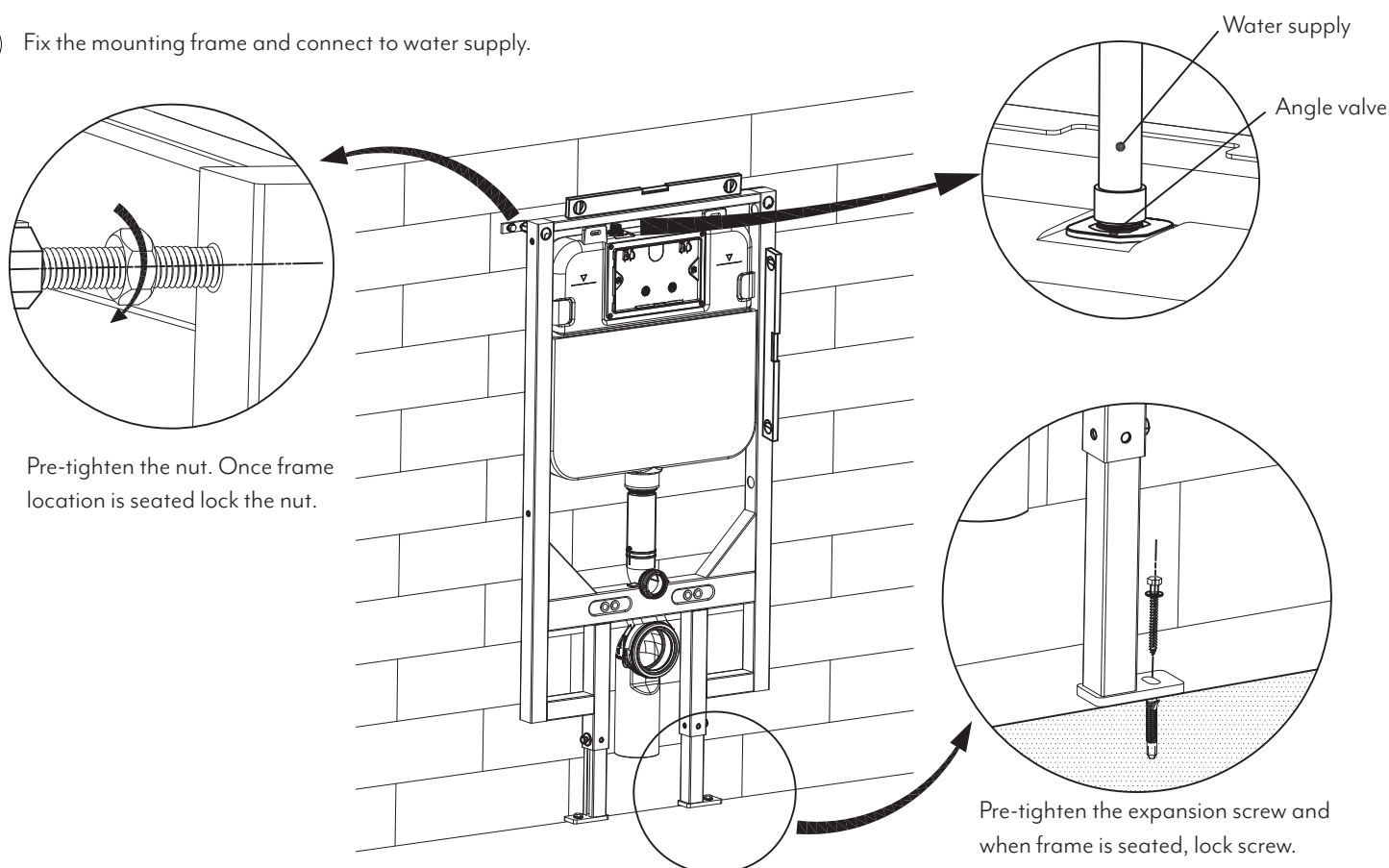
Note: This product must be installed by a licensed plumber. This is a general installation guide - there are many factors involved that can alter the installation method. **AU/NZ:** For installations within Australia and New Zealand, this product must be installed in compliance with AS/NZS 3500. **UK:** For installations in the United Kingdom this product must be installed in compliance with the Water Supply (Water Fittings) Regulations and Water Supply (Water Fittings) (Scotland) Byelaws. **Other:** For installations outside these countries, this product must be installed in compliance with the standards in your respective country.

ABI
INTERIORS

- ③ Adjust the socket head screw and floor fixing position and secure.



- ④ Fix the mounting frame and connect to water supply.

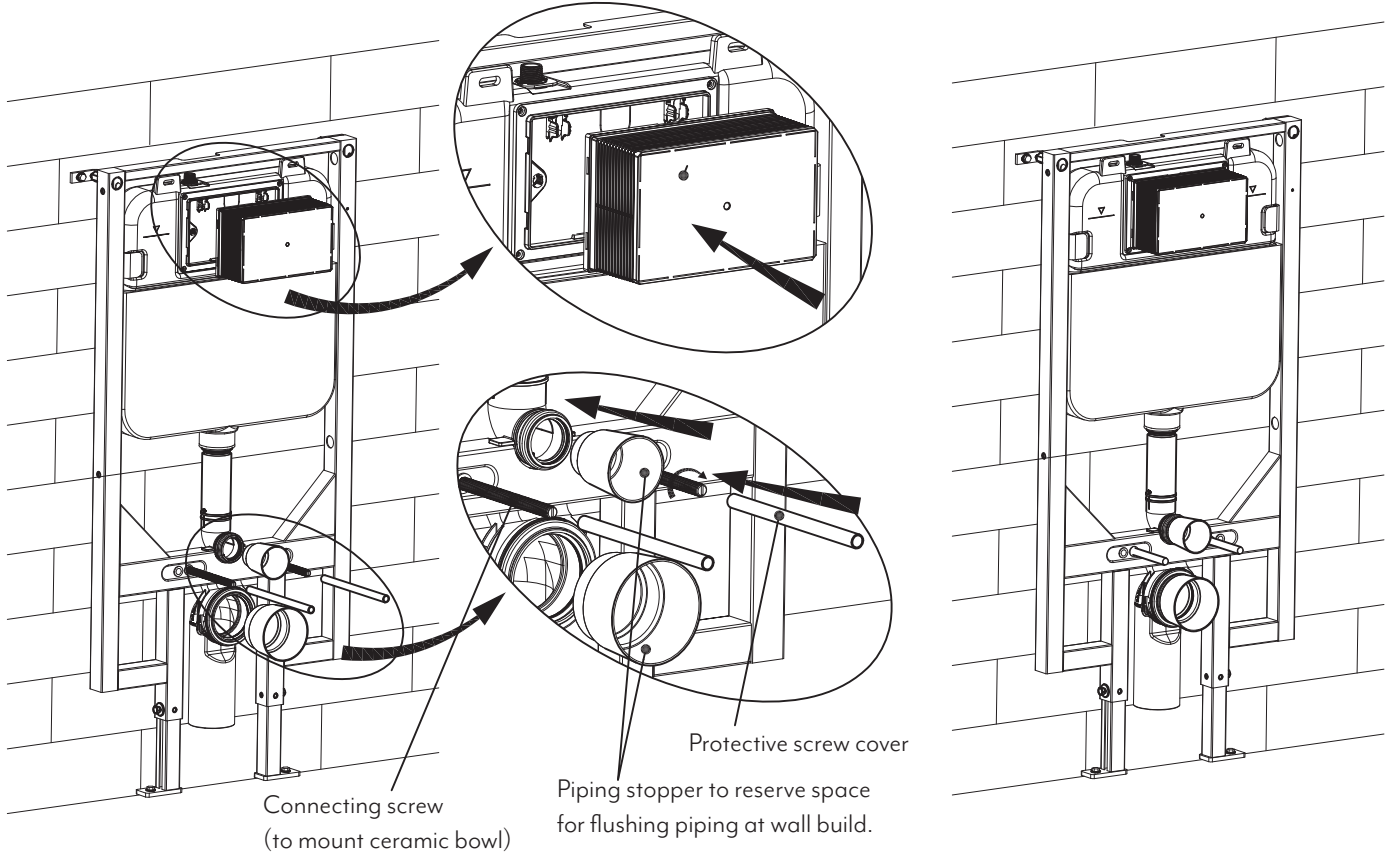


INSTALLATION GUIDE

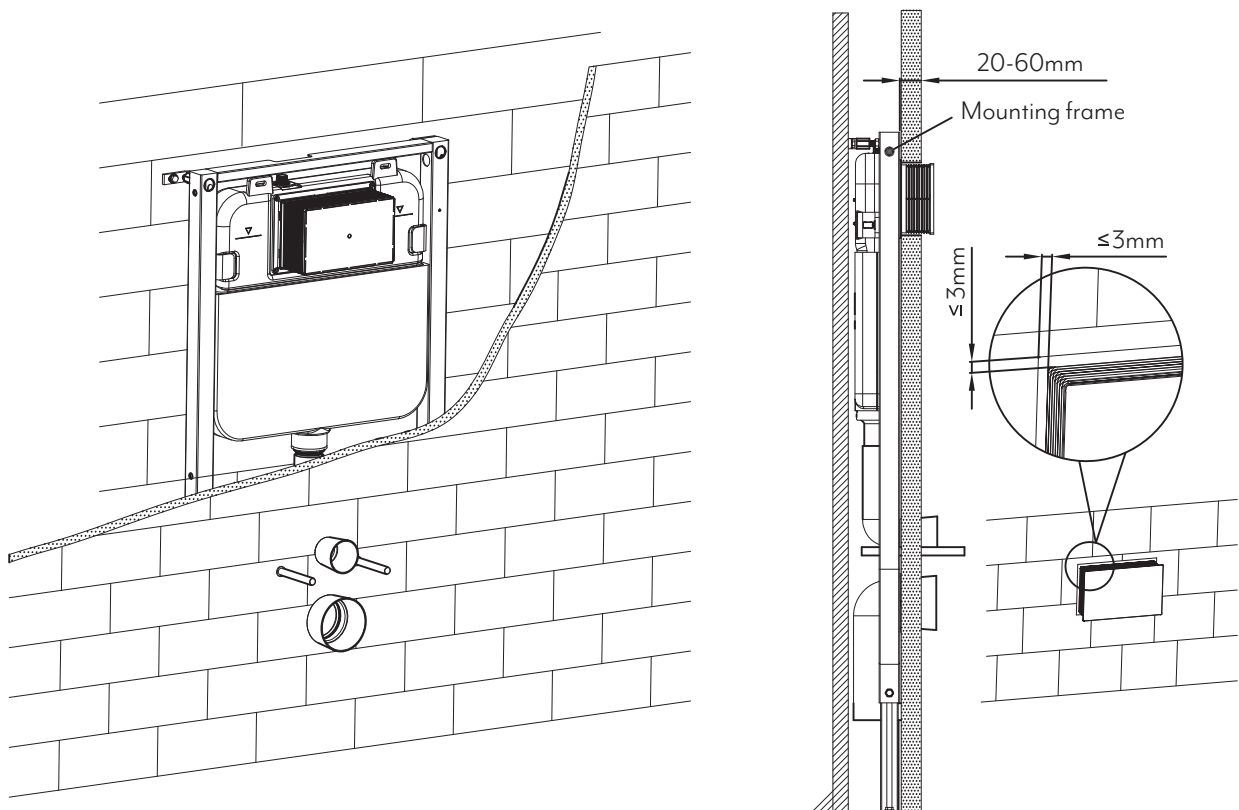
Note: This product must be installed by a licensed plumber. This is a general installation guide - there are many factors involved that can alter the installation method. **AU/NZ:** For installations within Australia and New Zealand, this product must be installed in compliance with AS/NZS 3500. **UK:** For installations in the United Kingdom this product must be installed in compliance with the Water Supply (Water Fittings) Regulations and Water Supply (Water Fittings) (Scotland) Byelaws. **Other:** For installations outside these countries, this product must be installed in compliance with the standards in your respective country.

ABI
INTERIORS

- 5 Place plastic holder onto cistern. This is to reserve space for the installation of the actuator once the wall is built. It prevents dust and debris from entering the tank during the remainder of the build.



- 6 Finish the wall. The finished wall thickness must be between 20-60mm.

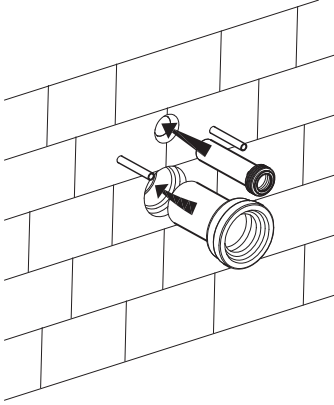


INSTALLATION GUIDE

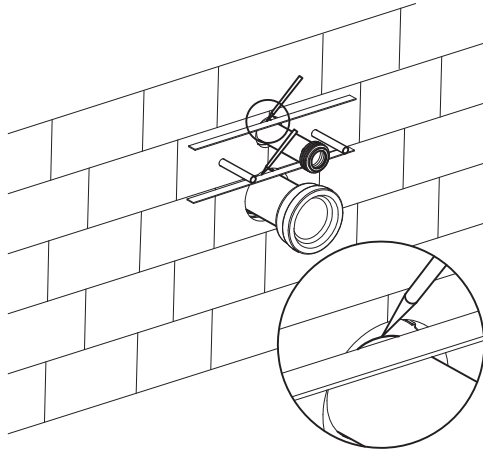
Note: This product must be installed by a licensed plumber. This is a general installation guide - there are many factors involved that can alter the installation method. **AU/NZ:** For installations within Australia and New Zealand, this product must be installed in compliance with AS/NZS 3500. **UK:** For installations in the United Kingdom this product must be installed in compliance with the Water Supply (Water Fittings) Regulations and Water Supply (Water Fittings) (Scotland) Byelaws. **Other:** For installations outside these countries, this product must be installed in compliance with the standards in your respective country.

ABI
INTERIORS

- ⑦ Insert the straight tube into the cistern flushing outlet.
Insert the connecting pipe into the discharging outlet.

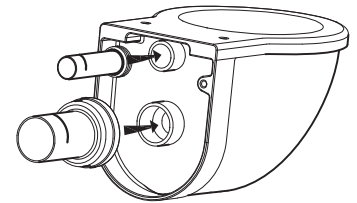


- ⑧ Mark finished wall location on piping.

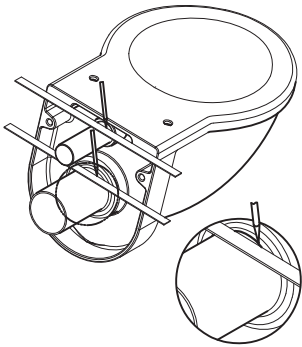


- ⑨ Apply lubricant on rubber washers of straight tube and connecting pipe, then insert into pan.

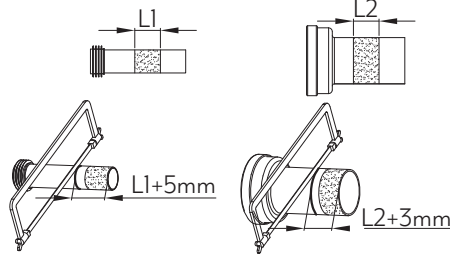
Please note: Pan not included with cistern.



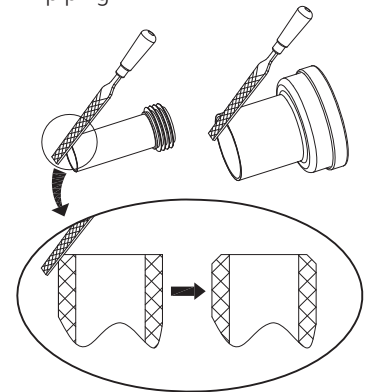
- ⑩ Mark finished pan location on piping.



- ⑪ Measure the distance between the 2 marked lines on the straight tube, add 5mm and cut. Measure the distance between the 2 marked lines on the straight tube, add 3mm and cut.



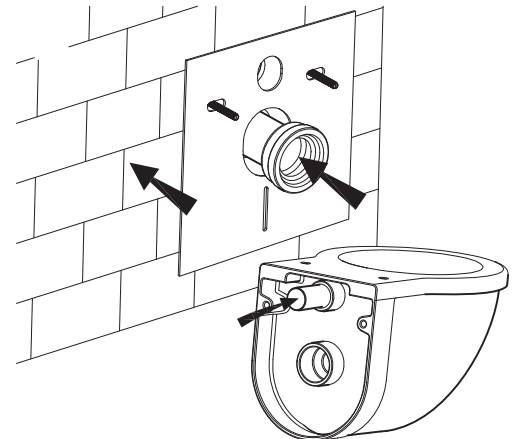
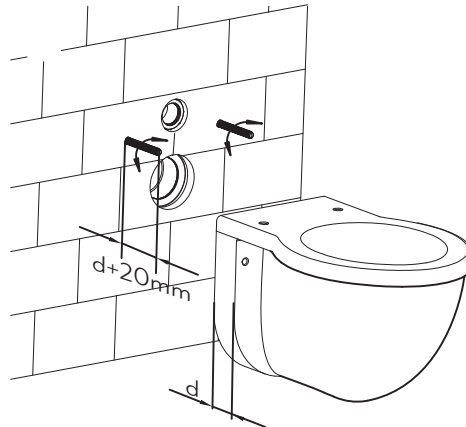
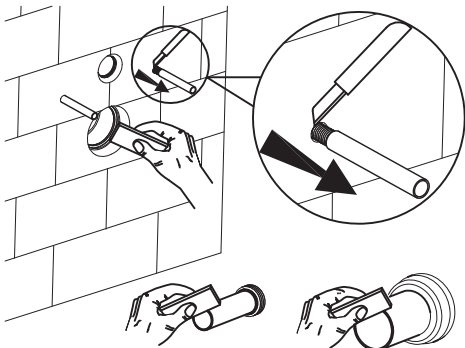
- ⑫ Deburr edges of the cut surface of the piping.



- ⑬ Cut the protective sleeve. Apply lubricant to deburred edges.

- ⑭ Adjust the connecting bolt to be $d+20\text{mm}$.

- ⑮ Insert connecting pipe into discharging outlet. Insert straight tube into ceramic pan.



- ⑯ Mount and secure pan according to pan instructions. Apply silicone. Test and commission.

